

Your pathway to
**Australia's
#1 University** Starts here
(QS World University Rankings 2019)



Contents

Welcome	04
Why study at ANUC?	07
Why ANU?	09
Why Canberra?	11
Welcome to your new home	12
Life on our campus	14
Pathways to success at ANUC	16
Foundation Studies Programs	18
Foundation Studies Standard and Rapid	19
Foundation Studies Extended	20
ANU Express	21
ANUC entry requirements	22
ANU Express entry requirements	23
Foundation Studies and ANU Express courses	24
Course descriptions	26
ANU entry requirements	28
ANU Diploma of Computing	30
ANU Diploma of Creative Design	31
ANU Diploma of Liberal Studies	32
ANU Diploma of Music	33
ANU Diploma of Science	34
Diploma entry requirements	35
ANU Access English	36
Academic English Preparation	38
How to apply	40
Application form	41
Program fees and additional costs	43



It was great to familiarise myself with the ANU environment, and it offered the best pathway. The curriculum is tailored to ANU and because the university is research-based, we learnt the tools and the skill set we needed to be able to succeed.

Tiara, Indonesia

ANUC alumni. Graduated from ANU with a Bachelor of Economics and Finance in 2017.



Welcome



Vice-Chancellor

Excellent teaching is at the heart of what The Australian National University (ANU) does and it is something we are proud of.

When you arrive at ANU College, you'll be welcomed as one of the ANU family. We have a large number of international students from across the world who study a wide range of degrees.

The pathways open to you through ANU College can lead to great success at ANU, like so many other students have experienced. Come and join Australia's national university.

Professor Brian P. Schmidt AC

Vice-Chancellor and President
The Australian National University



Head of International Study Centres

ANU College provides a high quality and supportive academic program for students seeking to progress to studies at Australia's leading university, The Australian National University (ANU).

Students will be provided strong academic support on the ANU Campus, where you will be taught by highly qualified and experienced teachers. ANU College also provides academic and welfare support to students, who will enjoy a wide variety of campus and recreational activities as part of their studies.

We are proud of the success of our previous graduates, who have gone on to be successful in their studies at ANU and in their careers following graduation.

We look forward to welcoming you to ANU College and supporting you in achieving success in your studies and future career.

Andrew Dawkins

Head of International Study Centres

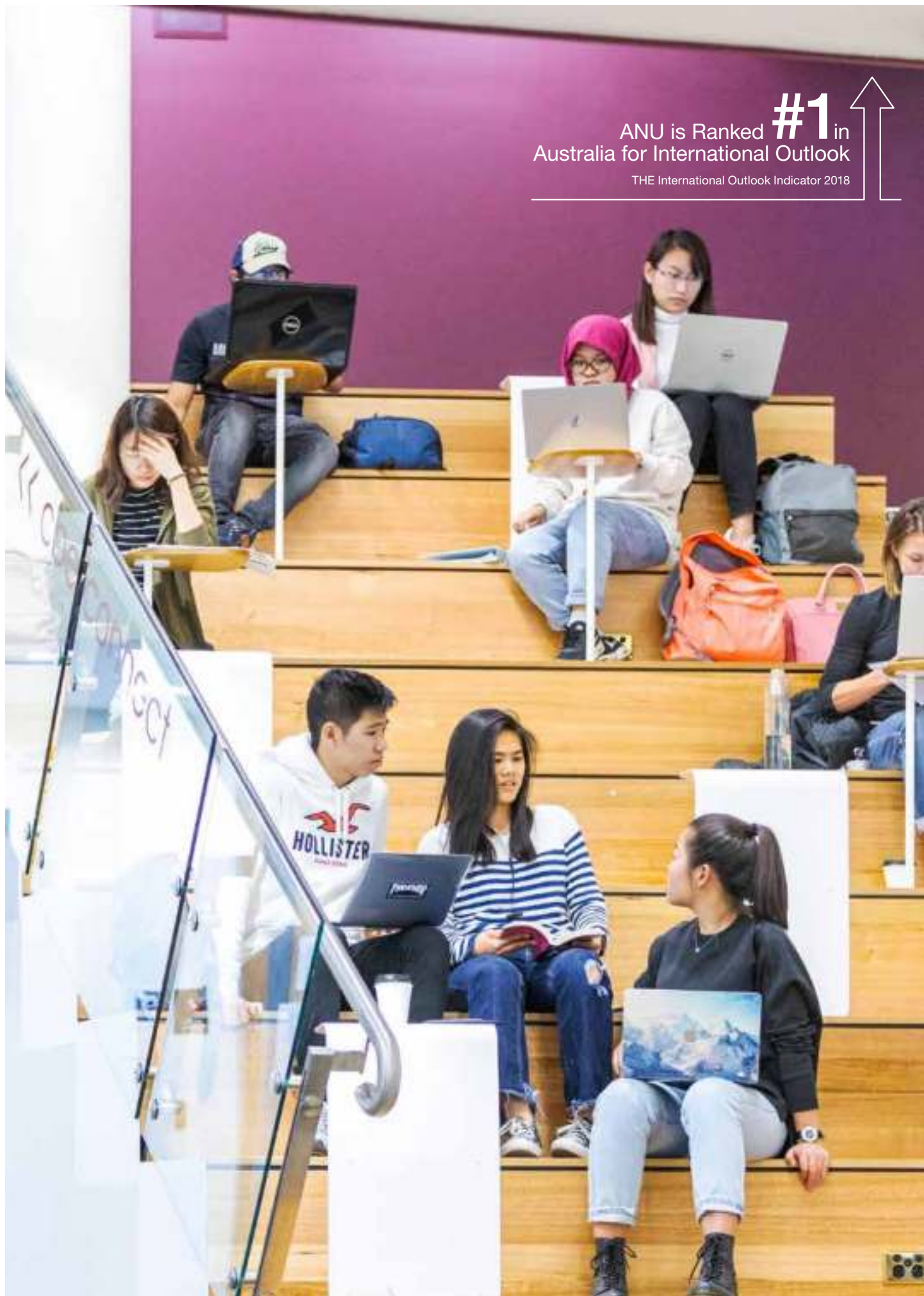
ANU is **#1**
in Australia and
24th in the world



QS World University Rankings 2019



ANU is Ranked **#1** in
Australia for International Outlook
THE International Outlook Indicator 2018



Why study at ANUC?

ANUC is the English language and academic pathway provider for ANU. Located on the ANU campus, the college provides the ideal place to adjust to life and studies in Australia.

Academic excellence and personalised support

ANUC students are provided with academic and personal support to ensure they excel in their studies at ANU. The college also equips students with the high level of academic language and research skills required for progression to this world-class university.

Students have access to all of the University's facilities and services, and can fully experience university life in a multi-cultural environment, studying with Australian and international students from around the world.

The academic staff are highly qualified; most hold postgraduate qualifications and have international teaching experience. Once you have successfully completed the ANUC Foundation Studies program, or one of the ANU Diploma programs, you may progress into an ANU degree program (subject to meeting ANU entry requirements).

Links to ANU

- ANU academic colleges organise tailored seminars that give you greater insight into ANU programs.
- Studying on the ANU campus gives you greater opportunities to attend university seminars during your ANUC program.
- As an ANUC student, you can easily access public institutions of national significance in Canberra, including the Australian Parliament, the National Library of Australia and the National Gallery of Australia.

ESOS framework

ANU and ANUC comply with the ESOS framework which is comprised of legislative requirements and standards for the quality assurance of education and training institutions offering courses to international students. More information can be found at

<https://internationaleducation.gov.au/Regulatory-Information/Pages/Regulatoryinformation.aspx>



over
92%
of ANUC Foundation Studies
students progressed to a
Bachelor Degree or an ANU
Diploma program in 2018



ANUC courses are delivered by Study Group Australia Pty Limited, trading as ANU College. Some of the courses provided by ANUC are included on the CRICOS registration of Study Group Australia Pty Limited. Other courses are included on the CRICOS of The Australian National University. In all cases, the courses are delivered by Study Group Australia Pty Limited, trading as ANU College (ANUC).



ANU has a
5 star

rating for student demand,
staff qualifications,
student:staff ratio and
student retention



2018 Good Universities Guide

Why ANU?

ANU is #1 in Australia and ranked #24 in the world.* It was founded by the Australian Government in 1946 to apply the best minds to the biggest questions and advance Australia's international standing.

ANU is recognised as one of the world's leading research-intensive centres of higher learning.

The University is consistently ranked in the top 50 universities in the world by a range of international measures. Importantly, 95 per cent of broad-field research and 91 per cent of discipline specific research is rated 'above' or 'well above' world standard by the Australian Government's Excellence in Research for Australia initiative.

It also has 5 star ratings for student demand, staff qualifications, student:staff ratio and student retention within the 2018 edition of The Good Universities Guide. ANU scholars lead global thinking on issues of national and international significance, and students go on to become leaders in their home countries and on the world stage.

Life on campus

ANU has beautiful, landscaped grounds, providing students with a relaxing and inspiring environment in which to study. The University is committed to continually improving facilities and infrastructure, and is undertaking an exciting project at the heart of the ANU campus. A development is in progress to provide students, staff and the Canberra community with new student accommodation, a pool, gymnasium, cinema, theatre, cafés, bars, shops and services. During the construction process an ANU Pop-Up Village is available, housing food, entertainment and service venues for the entire ANU community.

Many students find that cycling is a cheap and environmentally friendly way of getting around the campus and the city. Students in Canberra enjoy all the benefits of a small town whilst having access to the conveniences of a modern city.

Life off campus

There are plenty of restaurants and cafés, shops, sports clubs and leisure facilities in the city.

As Australia's capital, Canberra has an array of world-class galleries and museums, it is also home to music, food and cultural festivals, and has many exhibitions opening throughout the year.

*QS World University Rankings 2019



Cycling is a
fantastic way
to get around
the campus
and the city.



Why Canberra?

Canberra has a thriving student community, and is filled with national museums, sporting facilities, visitor attractions, historical sites and natural wonders. The city offers a unique blend of modern facilities, a pristine natural environment and high-quality education.

City facts

Canberra is the national capital of Australia, located in the Australian Capital Territory (ACT), with a population of approximately 400,000.[^]

Canberra offers an exceptional lifestyle for students, who make up 25 per cent of the city's population. It is ranked in the Top 25 student cities in the world (QS Best Student Cities 2018) and provides a healthy and safe place to concentrate on your studies.

Urban hub

There are many ways to see the inspiring design of the city, whether you venture to the top of Mount Ainslie or Black Mountain, visit the National Arboretum or take flight in a hot air balloon (an experience not to be missed), you will enjoy the beauty of Canberra. Surrounded by nature reserves and parklands, the city has earned the nickname 'The Bush Capital'.

You can easily get around Canberra using the many walking trails, bike paths or excellent public transport to see all the city has to offer. You will discover multicultural festivals, museums, galleries, restaurants and cafés, as well as beautiful countryside, all on your doorstep.

While surrounded by natural beauty, Canberra still offers the vibrant, cosmopolitan lifestyle of a modern city.

Sports lovers

Canberra's climate is perfect for participating in and watching a variety of sports at the many excellent public facilities.

If you are interested in skiing, the Snowy Mountains are a two hour drive from Canberra, making weekend trips to the snow easy and convenient. There is also the opportunity to try kayaking, paddle boarding or rowing, watch dragon boat races or try your hand at sailing on one of Canberra's lakes.

For those interested in other sports, there are many world-class facilities, including:

- Canberra Stadium, primarily used for rugby league and rugby union games
- Manuka Oval, a historic venue for cricket and the Australian Football League (AFL)
- The Australian Institute of Sport provides world class facilities for visitors to tour and watch sports including football, athletics, swimming, netball, basketball and tennis.

Getting to Canberra

Canberra Airport has transitioned to an international airport with direct flights now available to and from New Zealand and Singapore, with more direct international routes anticipated.

Transport to Canberra from Sydney is available by air, rail or bus.

- Sydney Airport Domestic to Canberra Airport - 50 minutes by air
- Sydney Airport International and Domestic to Jolimont Centre in Canberra CBD - 3 hours by bus
- Sydney Central Station to Canberra Railway Station - 4.5 hours by rail or 3 hours by bus

Getting to the city

If you are arriving by plane you can take a taxi or bus to the city. The Canberra Airport Express shuttle bus offers services daily during peak periods. Taxis are available from the taxi stand at the airport and a trip to the city will cost approximately AU\$30.

Public transport

Canberra has an excellent public bus system servicing all of the ACT. You will have a choice of buses to take to ANU, including one that stops directly in front of the College. Transport Canberra's new Light Rail Network, due for completion at the end of 2018, will add to the range of transport options available. It will make it even easier for students to get around the city and surrounding areas.

You will also be eligible for a student discount when taking public transport in Canberra.

Information about routes and timetables is available at transport.act.gov.au

For more information about Canberra, visit: canberrayourfuture.com.au
visitcanberra.com.au
studycbr.com.au

Average maximum temperatures

Canberra has four distinct seasons and is well known for having outstanding autumnal colour, clear blue skies in winter, a kaleidoscope of flowers in spring and very warm, dry summers. Average temperature (celsius / fahrenheit):

- Summer - 27°C / 80.6°F
- Autumn - 20°C / 68°F
- Winter - 12°C / 53.6°F
- Spring - 19°C / 60.2°F

Canberra has the **highest**
quality of living

in the world Numbeo quality of life index 2018



[^]Australian Demographic Statistics, Australian Bureau of Statistics, January 2017

Welcome to your new home

There are many accommodation options, but we recommend at least a short residence in homestay accommodation to help you adjust to your new surroundings.

Canberra greeting service

We can organise for you to be met on your arrival in Canberra and taken to your pre-arranged accommodation.

For bookings:
greeting@anucollege.edu.au



Homestay accommodation

A homestay experience offers a supportive family-style environment to help you adapt to life in Canberra and Australia. The minimum period of homestay is four weeks.

Australian Homestay Network

ANUC contracts the Australian Homestay Network (AHN) to provide safe, welcoming and quality accommodation.

All AHN families are trained to assist you with:

- settling into your new community
- understanding Australian culture
- everyday conversational skills, including English and 'Aussie' words and phrases
- buying transport tickets, finding the local shops, banking, internet and mobile phone services and personal safety tips.

As an AHN homestay student, you will be provided with:

- A supportive family environment and a home to live in with meals (optional) and utilities
- A clean furnished room (this includes a bed, desk, wardrobe, chair and other necessary items)
- Ongoing support for you and your hosts
- AHN 24/7 professional phone support

- AHN Contents Insurance for you and your hosts as per AHN Insurance Policy **homestaynetwork.org/public/ahninsurance**
- All AHN homestay families associated with ANUC have been screened by AHN, and are required to undertake a thorough registration process. This includes training, police checks, personal interviews and home-inspections in order to provide a high level of service and comfort to the student.

To book, please visit
homestaynetwork.org

Other accommodation options

We can help you to find your new home. For accommodation advice, please contact - **student.support@anucollege.edu.au**

For information on ANU campus accommodation – **rcc.anu.edu.au**

For private rental accommodation in Canberra* – **allhomes.com.au/ah/act/rent-residential**

For share house accommodation in Canberra* – **allhomes.com.au/ah/act/share-residential**



I've only been here a few months, but I've settled in very well, especially socially. I've made very good friends, and now I'm getting up to speed with the academic side of things.

Edgar, Malaysia
ANUC Foundation Studies student

Students under 18

If you are under 18 when you arrive, you will need to live with an AHN homestay family. Alternatively, you can live with a Department of Home Affairs approved relative. Professional caregiver services can be arranged through Professional Student Care (pscaustralia.com.au) or International Student Alliance (studentguardians.com).

If you are a student visa holder currently enrolled in another institution in Australia, you are required to inform ANUC at least three weeks prior to the start of your program that you require accommodation and need to make the necessary arrangement through the Homestay Network.

Learning material and practices are contextualised to meet the individual needs of the student, taking into account the age and maturity.

For more information on support provided to under 18s, please visit anucollege.edu.au/about-anuc/college-policies

Guaranteed accommodation

ANU guarantees accommodation in one of their Halls, Colleges, Lodges or other approved accommodation for ANUC students who are over 18 in the Foundation Studies and Diploma programs, commencing January/February.[^]

While accommodation is guaranteed, ANU cannot guarantee that you will receive your first choice.

[^]Conditions apply, for more information, please visit anu.edu.au/study/accommodation/accommodation-guarantee

Life on our campus

ANUC and ANU students come from all over the world, creating a diverse and vibrant on-campus community where you can make lifelong friends.

Support from the day you arrive

On your orientation day, ANUC will give you important information about your program, to help you adjust to your new academic environment.



Great Canberra location

ANUC is located on the ANU campus, so you can interact with Australian and international students from around the world. The ANUC building is only a 10-minute walk from Canberra city centre, giving you easy access to many attractions, shopping centres and other services.

Facilities and services

By choosing to study at ANUC, you will benefit from facilities and services including:

- purpose-built classrooms with computing facilities
- a comfortable student common room with kitchen facilities
- quiet study and ICT resource areas

Health and safety

ANU has a dedicated team of students who volunteer as UNISAFEGUARD Escorts. This free service complements the regular UniSafe Bus service offered by ANU.

Please visit facilities.anu.edu.au/services/anu-security/safety-initiatives for further information.

Events and social activities

ANUC offers a number of interesting and enjoyable sightseeing, sporting and cultural activities, with social events organised throughout the year. These events help you to get to know your classmates and teachers, and to meet Australian students studying at ANU.

CareerAhead

With your future in mind, we have a careers program as part of all our programs. The CareerAhead service is designed to give you a head start in today's competitive graduate employment market by helping you become a confident, highly-skilled and extremely employable graduate.

CareerAhead will help you:

- identify your natural strengths and the skills you need to improve
- get a better understanding of the employment market in your home country, as well as in Australia
- write an impressive resume and personal statement
- boost your confidence and develop interview skills.

Academic support

ANUC incorporates supervised self-directed learning into all programs. This provides another opportunity for you to receive individual academic support and advice.

Teachers are available to guide you on study strategies and cross-cultural issues that may arise while studying in Australia. Advice is also available on matters such as balancing study and personal commitments.

ANU is ranked as Australia's most

international university, and is in the top 10 worldwide.

THE Most International Universities 2018





Student welfare support

ANUC has two dedicated Student Support Officers who provide assistance and referrals for non-academic matters. If you have accommodation, personal, medical or legal questions, you can see a Student Support Officer for guidance or referral.

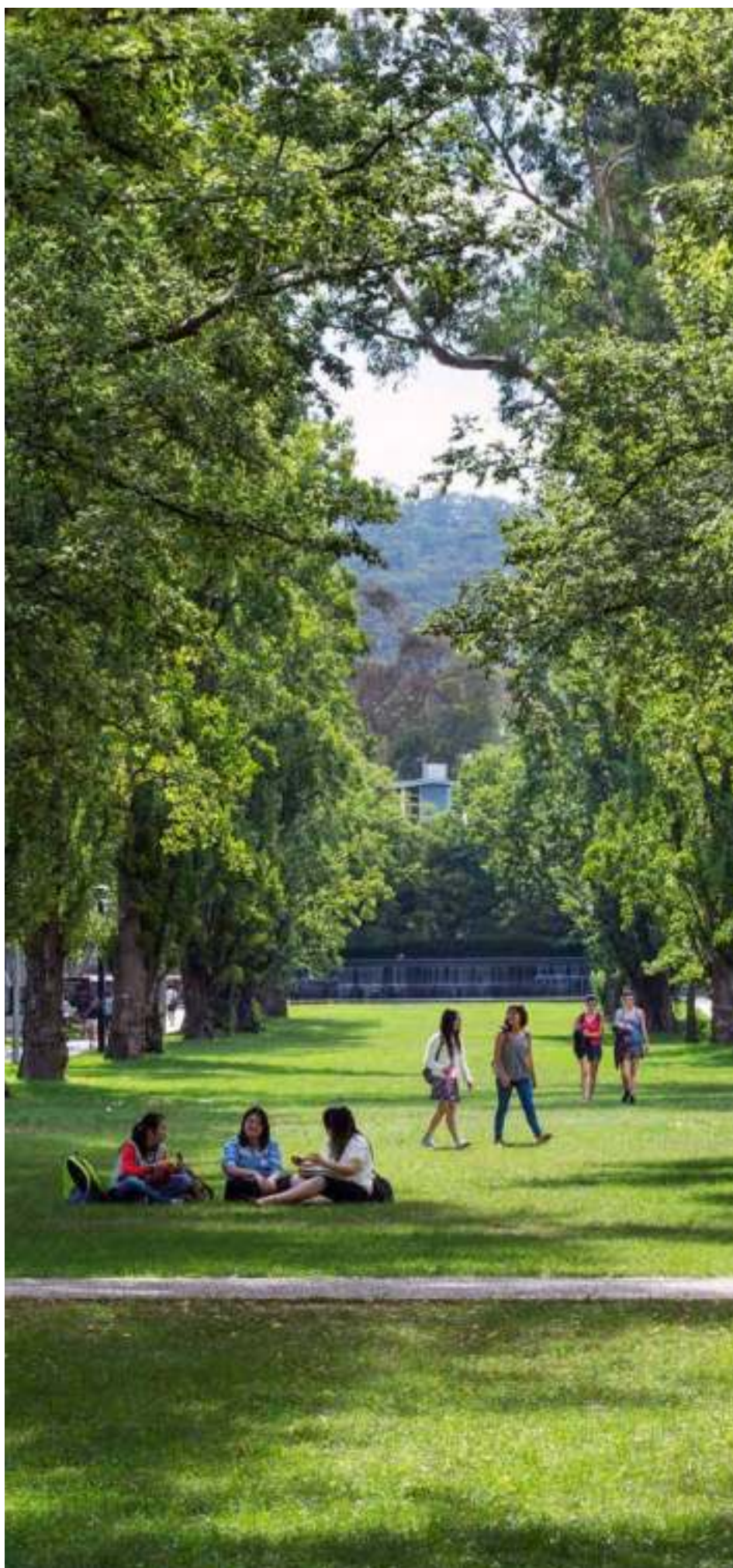
The Student Support Officers also work closely with individuals or groups of students identified as requiring additional support, such as students aged under 18, to ensure a smooth adjustment to college life.

Access to ANU services and facilities

As an ANUC student, you can get involved in the many clubs and societies located on and around campus. You will have access to many of the University's services and facilities, such as:

- Medical Centre
- counselling services
- libraries
- Careers Centre
- Disability Services Centre

ANUC students enjoy the same access and rates for ANU Sport facilities and services as ANU students. For more information, head to www.anu-sport.com.au



Pathways to success at ANUC

Choose from a range of English language and pathway preparation programs that are right for your academic level and the ANU degree you plan to study.

Foundation Studies (see pages 18-20)

Each pathway in the Foundation Studies program has been created to offer a route into the first year in one of many Bachelor degrees, across different subject areas. This program is designed for high school students aged 16 and over who require additional academic preparation and to further develop their English language skills in an academic environment.

ANU Express (see page 21)

A fast-track program, delivered in 13 weeks, designed for high achieving students who just missed direct entry to ANU. It covers a broad range of subjects to give access to many degree programs at ANU. A focus on research helps to prepare highly qualified students for academic life and success on a shorter timescale than the Foundation Studies program.

ANU Diplomas (see pages 30-34)

With pathways to Science, IT and the Arts, these programs are designed for students who have completed high school, and possibly another year of study, but have not achieved the required grades for direct entry to ANU or need further English language training. By successfully completing an ANU Diploma with the required grade point average, you may progress into the second year of the related Bachelor degree.



Academic English Preparation (AEP) (see page 38)

Each 10-week module in AEP has been created to help students advance their proficiency in using English in academic settings and to develop the study skills needed for university.

Access English (see page 36)

ANU Access English is a 10-week intensive course with a strong focus on Academic English designed to equip international students with the academic skills and knowledge required to transition successfully to postgraduate and undergraduate courses at ANU.



What's involved?

Students enrolled in ANUC programs are provided with excellent resources for their studies. Helpful and experienced academic staff are on hand to assist throughout the duration of their program. As well as the timetabled lessons, students enrolled in ELICOS or Foundation programs have supervised study time, during which they coordinate their own learning and assignments.

Mode of study

Face-to-face delivery.



Studying at ANU College gave me a real head-start for university. The course gave me a lot of academic skills that I would have missed out on if I'd jumped straight into ANU. As my college results were really good, it gave me a lot of options for the degrees I could do at ANU.

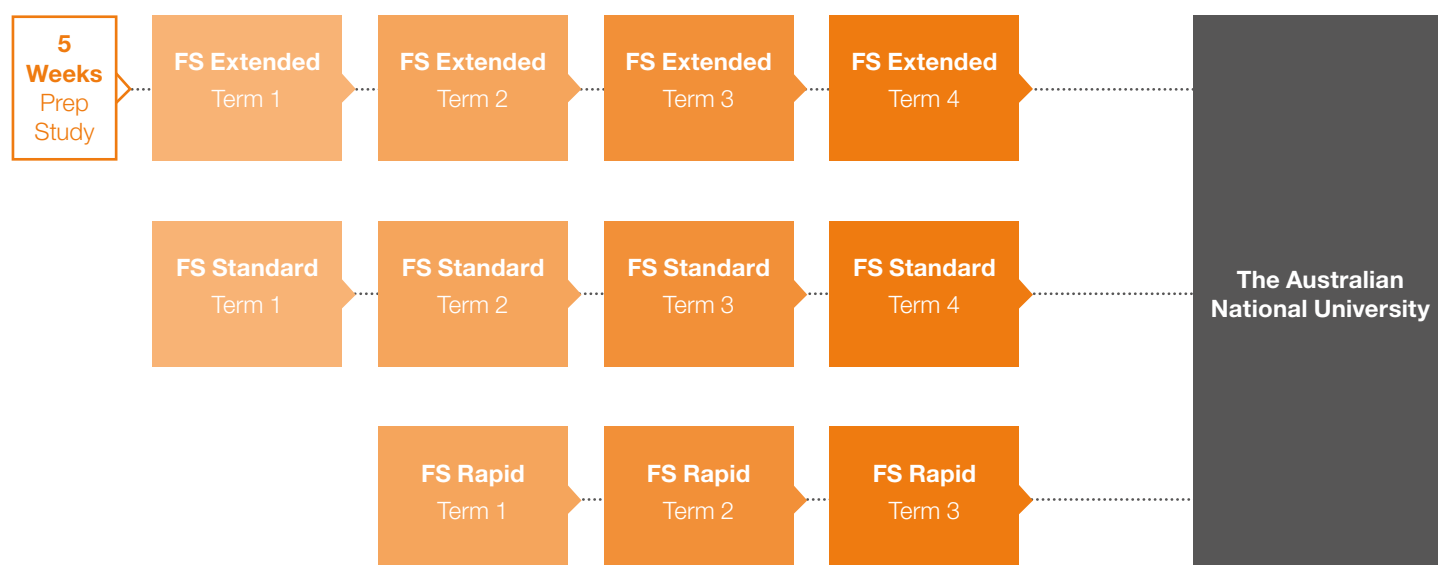
Anh, Vietnam

ANUC alumni. Studying a Bachelor of International Security Studies at ANU.

Foundation Studies Programs

These programs provide excellent pathway options to ANU. They are designed to prepare students with the necessary content, language, academic and research skills critical to a confident and successful start at Australia's leading university, the Australian National University.

Pathways to ANU



Each term, students in all programs select courses based on their Foundation Studies stream and discipline requirements (5 or 6 courses) and attend additional SWOT sessions (i.e. Study, Workshops or Tutorials). Students at ANUC are also encouraged to participate in sporting, cultural and recreational activities, ANUC careers sessions, and academic activities such as optional discussion classes to improve friendships, networking, academic skills and employment prospects.

Once you have successfully completed the ANUC Foundation Studies program, you may progress into an ANU degree program (subject to meeting ANU entry requirements). Depending on your academic qualifications you can study Foundation Studies Rapid (3 terms) or Foundation Studies Standard (4 terms) or Foundation Studies Extended (5-week preliminary term plus 4 terms of 10 weeks).

Foundation Studies Standard and Rapid

The Foundation Standard and Rapid programs are a great choice for students who would benefit from flexibility in their pathway to ANU. Each program is designed to provide students with the opportunity to study diverse core and elective courses and obtain a competitive academic entry score for ANU. Students can maximise their opportunity to meet pre-requisite course criteria for multiple ANU programs and achieve the English requirement given the structure of the Foundation programs.

Foundation Studies Standard

The Foundation Studies Standard program is the flagship of the pathways at ANUC.

The four term model delivered over 44 weeks offers students more flexibility in achieving a competitive academic entry score for starting at ANU.

At the end of Terms 1, 2 and 3, you will have a scheduled holiday break.

Students undertake the following:

- a total of 20 courses over four terms (5 per term)
- 12 compulsory courses are selected from the English (Core Skills and Applied), plus Mathematics or Research Skills areas
- 8 discipline electives (from the Science, Business and Economics, Arts/Law, and Engineering and Computer Science discipline areas)

What does a week look like?

- All courses run twice a week totalling four hours each.
- Two hours per fortnight of Study, Workshops or Tutorials (SWOT).
- Total tuition of 20-22 hours per week.

2019 Intake dates (Foundation Standard)

- 29 January
- 15 July

Foundation Studies Rapid

The Foundation Studies Rapid provides very able, focused and confident students with a three term fast-track foundation program as a pathway to ANU. It is advisable that students selecting this 33 week program are confident English speakers, able to excel under pressure with diverse assessment tasks such as critical analysis and oral presentations.

At the end of Terms 1 and 2, you will have a scheduled holiday break.

Students undertake the following:

- a total of 18 courses over three terms (6 per term)
- 9 compulsory courses are selected from the English (Core Skills and Applied), plus Mathematics or Research skills areas
- 9 discipline electives (from the Science, Business and Economics, Arts/Law, and Engineering and Computer Science discipline areas)

What does a week look like?

- All courses run twice a week totalling four hours each.
- Two hours per week of Study, Workshops or Tutorials (SWOT).
- Total tuition of 26 hours per week.

2019 Intake dates (Foundation Rapid)

- 23 April
- 08 October

Course selection requirements for ANU

- Students need to complete a minimum of 2 terms of study (20 weeks) in discipline elective courses identified by ANU Bachelor programs as Year 12 prerequisites.



Foundation Studies Extended

Foundation Studies Extended provides students with the opportunity to enhance their study, language skills and cultural awareness through five weeks of practical and focused courses and a study tour experience to Sydney or the Illawarra region.

This program would appeal to international students seeking specialised instruction to improve language and academic skills, and those wishing a well-supported and comprehensive introduction to studying and living in Australia.

In the Foundation Studies Extended program, students complete the following courses and activities across five weeks to develop language, research and academic writing skills, as well as applied numeracy and cultural awareness:

- Foundation English
- Maths in Society
- The Social Psychology of Leisure
- Australian Landscape
- Study tour to Sydney or the Illawarra region, which is designed as a cultural immersion experience to help students gain more knowledge about Australia.

What does a week look like?

- Foundation English runs four times each week, totalling eight hours.
- Other courses run twice a week, involving five hours of class work or language immersion activities.
- Two hours per week of Study, Workshops or Tutorials (SWOT).
- Total tuition of 25 hours per week for the first five weeks. Then, for the remaining four terms, total tuition will be 22 hours per week.

Upon successful completion of these preliminary courses (achieving a minimum average score of 50% and a minimum result of 55% in the Foundation English course), students will be eligible to progress to the first term of the Foundation Studies Extended program.

Across the whole Foundation Studies Extended program, students study a total of 24 courses.

It is recommended that students allocate at least the equivalent amount of time for class preparation, homework, assignments and self study for each course they are enrolled.

At the end of Terms 1, 2 and 3, you will have a scheduled holiday break.

Assessment*

You will be assessed throughout the Foundation program using a range of assessment tasks, which encourage the development of diverse skills.

Assessment tasks may include listening and reading comprehension exercises, essays and reports, examinations, oral presentations and group discussions, research projects, mathematical and scientific calculations, and laboratory work. There is a strong focus on critical thinking, problem-solving and analysis.

Progression to ANU*

Entry to ANU occurs when a student successfully completes the program and meets both the English and academic entry requirements.

Please refer to the explanation on the ANUC website on how the English and academic entry requirements are calculated:

www.anucollege.edu.au

2019 Intake dates (Foundation Extended)

- 03 June
- 11 November

Scholarships

ANU College of Business & Economics International Merit Scholarship

Each year the ANU College of Business and Economics may award up to two half-tuition fee (50 per cent for one semester)

scholarships to eligible ANUC Foundation Studies students. Students must accept an offer of degree study in the ANU College of Business and Economics to be eligible.

The scholarship is awarded to students based on their overall academic performance in the ANUC Foundation Studies program.

For full details, please visit **anu.edu.au**.

au/students/scholarships-fees/scholarships/anu-college-of-business-economics-international-merit



*Applicable to Foundation Studies Extended / Standard / Rapid.

ANU Express

The ANU Express program is the shortest length academic and English language pathway to ANU, exclusively delivered by ANUC.

The program is designed for students who just missed out on receiving an offer for direct entry to ANU, and like the Foundation Standard and Rapid programs, ANU Express offers students a range of core and elective courses.

The ANU Express program comprises the following courses for one term:

- Independent Research: Advanced*
- Quantitative or Qualitative Research Skills
- Maths or Applied English
- Three academic content courses

What does a week look like?

- All courses run twice a week totalling four hours each.
- Two hours per week of Study, Workshops or Tutorials (SWOT).
- Average total tuition of 26 hours per week over 13 weeks.
- Students in the ANU Express program will study a total of 6 courses.

2019 Intake dates

- 08 April
- 23 September

*The Independent Research: Advanced course commences with an initial 2-week introductory program with a final week of independent work allowing for the finalisation of course requirements.



ANUC

entry requirements

Foundation Studies

Entry to the program is dependent on meeting the ANUC English language and academic entry requirements.

This information is intended as a guide only and is subject to change without notice.

For the most current information, please visit anucollege.edu.au

English language

English Test	ANUC Foundation Studies Extended	ANUC Foundation Studies Standard/Rapid
IELTS Academic	IELTS 5.5 (no band less than 5.0)	IELTS 6.0 (no band less than 5.5)
TOEFL PB	525 (with a TWE score of 3.5)	550 (with a TWE score of 4.0)
TOEFL IBT	52 (writing no less than 16)	68 (writing no less than 18)
PTE Academic	49 (with a minimum score of 48 in each of the communicative skills)	57 (with a minimum score of 50 in each of the communicative skills)

Academic

Country	ANUC Foundation Studies Extended	ANUC Foundation Studies Standard/Rapid
Australia	Year 11 (60% in relevant subjects)	Year 11 (70% in relevant subjects)
China	Senior year 2 or Senior 3 - 60% or above in relevant subjects	Senior year 2 or Senior 3 - 70% or above in relevant subjects
Hong Kong	Form 5 with satisfactory results in 4 academic subjects HKDSE - 2 Level 2 and 1 Level 1 in relevant subjects	Form 5 with satisfactory results in 4 academic subjects HKDSE - 3 relevant subjects at Level 2
Indonesia	SMA2 - 65% in 4 academic subjects	SMA2 - 70%-75% in 4 academic subjects
Japan	Kotogakko / Upper Secondary School Certificate year 2 - Grade 3 - 4 in academic subjects	Kotogakko / Upper Secondary School Certificate year 2 - Grade 4 - 5 in academic subjects
Macau	Form 5 / Senior Middle 2 60 - 65% in academic subjects	Form 5 / Senior Middle 2 65 - 75% in academic subjects
Malaysia	SPM (or forecast) - aggregate of 30 or less across 5 academic subjects	SPM (or forecast) - aggregate of 20 or less across 5 academic subjects
Singapore	Singapore O levels (or forecast) - aggregate of 30 or less across 5 academic subjects	Singapore O levels (or forecast) - aggregate of 20 or less across 5 academic subjects
South Korea	High School Certificate Year 2 - Rank 4 - 5	High School Certificate Year 2 - Rank 2 - 3
Taiwan	Senior Year 2 - 60% or above in 4 relevant subjects	Senior Year 2 - 70% or above in 4 relevant subjects
Thailand	Matayom 5 GPA 2.2 in academic subjects	Matayom 5 GPA 2.5 in academic subjects
Vietnam	Year 11 - GPA 7.0	Year 11 - GPA 7.5

Applicants should be advised that assessment is on the basis of the latest qualification attempted and/or achieved.

The scores published should be used as a guide only and may vary at any time.

Note:

1. Students must be at least 16 years old for the Foundation Studies Extended Program and 17 years old for the Foundation Studies Standard/Rapid upon course commencement.
2. Students intending to study at ANU are required to be at least 17 years of age by the first day of the commencing semester.

ANU Express

entry requirements

Pathway to ANU

ANU Express is designed for students who just missed out on receiving an offer for direct entry to ANU.

This information is intended as a guide only and is subject to change without notice.

For the most current information, please visit anucollege.edu.au

English language

English Test	Entry requirement
IELTS Academic	Regular degree programs: 6.5 (no bands less than 6.0)
TOEFL IBT	Regular degree programs: 80 with a minimum of 20 in Reading and Writing and 18 in Speaking and Listening

Academic

Country	Qualification	Entry requirement	Country	Qualification	Entry requirement
Australia	ATAR	ATAR 75			
Bangladesh	1 year tertiary studies	On a case by case basis	Singapore	A level	9 aggregate best 3 H2 (A=5, B=4, C=3, D=2, E=1) and best 1 H1 (A=2.5, B=2, C=1.5, D=1, E=0.5)
Bhutan	1 year tertiary studies	On a case by case basis	Saudi Arabia	1 year tertiary studies	On a case by case basis
	Senior Middle 3	85%	South Korea	CSAT	320
	Gao Kao	480 332 (69% of total score)	Sri Lanka	A levels	Best 3 subjects with an aggregate of 6
China		660 455 750 518 900 621	Taiwan	GSAT	5 Subjects with a grade of 59
		Best of 4, aggregate of 13	United Arab Emirates	1 year tertiary studies	On a case by case basis
		Assessed on the best 4 subjects excluding Chinese Language, Physical Education, Technology and Living, Tourism and Hospitality, Health Management and Social Care, and Religious Studies where 5**=6; 5*=5.5; 5=5; 4=4; 3=3; 2=2 and 1=1			Best of 3, 11 points or best of 4, 13 points
Hong Kong	HKDSE		United Kingdom	A level	GCE A Levels are assessed by best 3 or best 4 subjects. A*=6, A=5, B=4, C=3, D=2, E=1. If 4 or more subjects are presented the best 4 or best 3 subjects will be used, whichever provides the highest rank
India	ISC	79%			ACT 22 or SAT 1130 out of 1600
India	AISSC	Best 4 externally examined subjects, aggregate of 11			Besides SAT or ACT results, students must also achieve US accredited high school diploma with an overall GPA of 2.0 out of 4.0
Indonesia	Accepted but limited to a select number of schools		United States	Accredited American high school diploma	
International Baccalaureate		26			
Malaysia	STPM	Best 3 subjects with an aggregate of 8	Vietnam	Year 12 Graduation Diploma	GPA 8.0 (7 in Maths)
Pakistan	1 year tertiary studies	On a case by case basis			

Applicants should be advised that assessment is on the basis of the latest qualification attempted and/or achieved.

The University reserves the right to alter or discontinue its programs as required. The scores published should be used as a guide only and the University may vary these requirements at any time.

Foundation Studies and ANU Express courses

Compulsory courses

English Core Skills
Applied English
Mathematics
OR
Research courses:
Qualitative Research Skills
Quantitative Research Skills
Logic and Critical Reasoning
Mathematical Investigations

Elective courses*

Sciences/Computing/ Engineering

Mathematics
Physics
Chemistry
Biology
Maths Extension
Web Development & Design
Programming Fundamentals
Critical Thinking
Psychology of Learning
Psychology: Attitudes,
Prejudice and Bias
Social Psychology
Qualitative Research Skills
Quantitative Research Skills
Independent Research Project

Business & Economics

Mathematics
Business Studies
Microeconomics
Macroeconomics
Maths Extension
Critical Thinking
Psychology: Attitudes,
Prejudice and Bias
Social Psychology
Legal Studies
Qualitative Research Skills
Quantitative Research Skills
Independent Research Project

Arts, Law and Social Sciences

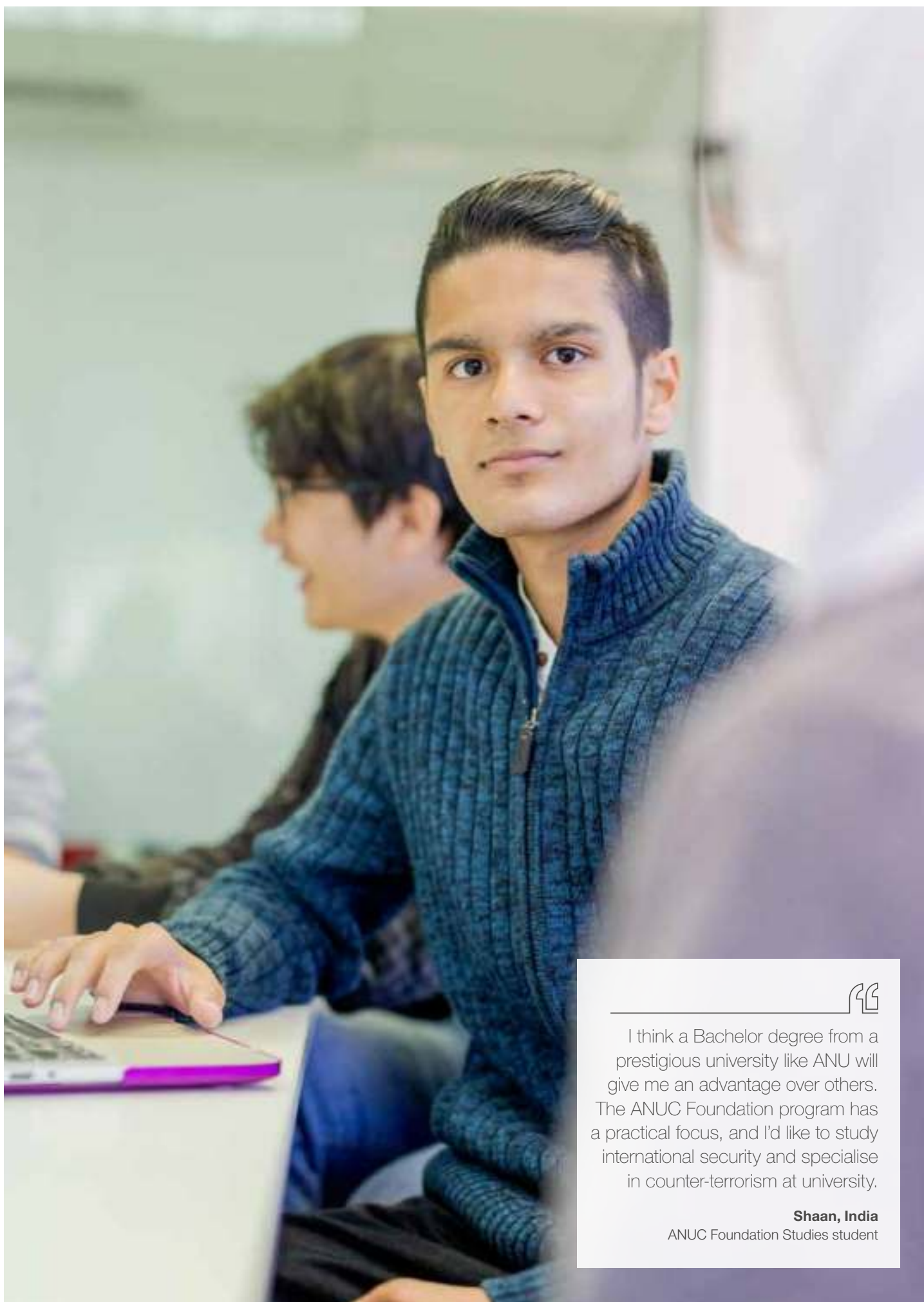
Australian Studies and Politics
European Studies
History: World Events
History: 20th Century
International Studies
Legal Studies
Critical Thinking
Psychology: Attitudes,
Prejudice and Bias
Social Psychology
Music
Qualitative Research Skills
Quantitative Research Skills
Independent Research Project

Electives

* Students need to complete a minimum of two terms (20 weeks) of elective discipline courses (e.g., Chemistry A + Chemistry B for Bachelor of Science chemistry major) to meet ANU bachelor program year 12 prerequisite requirements as stated on the ANU program information.

** Core and elective courses are offered across a four term schedule and on a stand-alone basis. Courses are not sequential and can be taken in any order (e.g., Biology B before Biology A) – based on enrolment start date.





I think a Bachelor degree from a prestigious university like ANU will give me an advantage over others. The ANUC Foundation program has a practical focus, and I'd like to study international security and specialise in counter-terrorism at university.

Shaan, India

ANUC Foundation Studies student

Course descriptions

After studying Foundation Studies, you will be ready to join the first year of an undergraduate degree at ANU.

Foundation Studies (Standard & Rapid)

Compulsory subjects

English Core Skills (A to E)

Each term, students will undertake a core English skills subject, which has a particular focus on reading, writing, listening or oral language skills. A thematic approach is taken to teaching these core language skills, with the primary aim to prepare students for a successful transition to a first year university program.

Applied English (A to D)

The complementary academic skills that accompany a study of the English language are applied across a number of elective areas of study, chosen by the student. Skills such as referencing and citation, report writing, note taking and conducting professional presentations are taught through discipline-related electives.

Mathematics

Successful mathematics learning lays the foundations for study in many disciplines at tertiary level and in the applications of those disciplines.* Given the importance placed on students continuing to study mathematics at the senior level in the Australian National Curriculum, all students in the Foundation Studies program will be required to undertake at least one mathematics subject. Students will have the option of studying either Mathematical Investigations as a single subject, or a combination of senior mathematics subjects (Maths A to D). Students wanting to study mathematics at an advanced level have the option of studying one of two extension maths subjects, or both.

Elective subjects

Australian Studies and Politics

This subject is designed to help students gain an understanding of some of the people, ideas and events that have shaped Australian society. Throughout this subject, students are encouraged to compare Australian culture with their own home culture, and to reflect on how their own societies function and have shaped them as individuals.

Biology

There are two Biology subjects on offer: Biology A focusing on cellular and human biology; and Biology B comprising a separate study on ecology, evolution and the environment. Both subjects enable students to acquire numeracy and language skills, as well as practical experience, through laboratory work.

Business Studies

A study of accounting, finance and investments, business enterprise and marketing principles are offered to students across four independent Business Studies subjects (A to D). Students undertaking any of these business subjects will have the opportunity to develop their written and oral language skills in a business context. Sound decision making based on mathematical calculations and relevant business knowledge underpin each of these business subjects.

Chemistry

Students wanting to develop their understanding of basic chemistry principles may do so through four subject offerings (Chemistry A to D). These four subjects cover theoretical and practical explorations into chemical reactions, organic chemistry, atomic theory and biochemistry. Students will be challenged to critically evaluate and debate scientific arguments and claims in order to solve problems. Scientific report writing, as well as the methods of conducting laboratory experiments, is a feature of each of these subjects.

Computer Studies

Web Design and Development (Computer Studies A) and Programming Fundamentals (Computer Studies B), are two subjects on offer to students wanting to pursue further study in the computer sciences or for those students who simply wish to pursue a particular passion, interest or curiosity they may have in this area. Both subjects have a theoretical and practical focus, engaging students in current ICT methodologies and practices.

Critical Thinking[^]

Students, across three different subject offerings, will have the opportunity to learn how to analyse problems, and interpret and assess the validity of arguments. A theoretical and practical analysis is undertaken on how flaws in argument and reasoning can and have led to errors in judgment in a range of situations in political, business and other contexts.

Economics

Students have the opportunity to investigate and explore the basic economic problem of scarce resources in our society through the lens of an economist on either a micro or macro scale. Microeconomics focuses on issues that affect individuals and companies, whilst macroeconomics focuses on issues that affect the economy as a whole. These two subjects may be studied independently, but for students who study both, a full appreciation for how all aspects of an economy work together is gained.

European Language and Cultural Studies

The objectives of this subject are to develop students' conceptual understanding of European culture, including its art, history, music and politics, as well as its global influences. This elective also provides students with the opportunity to develop European language skills at a beginner's level and to discuss key factors influencing modern Europe.

History

Key moments in Western civilisation, and major historical events of the twentieth century, are explored in two history subject offerings. Historical events in these subjects are introduced not as a series of dates, but as a way of developing a basic framework for thinking about how and why Western society and philosophy has emerged in its current form. Students will have the opportunity to engage with digital humanities, and to analyse primary and secondary sources, across a range of fascinating historical topics.

Independent Research

Students in this subject will be able to undertake an independent research project on a suitable topic, which complements their broader academic studies. Students will learn how to devise a research topic or question, develop an appropriate methodology, conduct and log research, and report on findings.

International Studies

This subject examines global trends and key issues in international relations. It explores the concept of global citizenship and looks at forms of governance that have originated in different countries, as well as various governing bodies such as the United Nations, ASEAN and the G20. Students are encouraged to reflect on how the Australian political system is comparable to, and different from, the system of politics that operates in their own country.

Legal Studies

This subject aims to provide students with a foundational understanding of the Australian legal system, and an appreciation of how it differs to other legal systems around the world. Students will learn how to construct a legal argument, resolve legal issues and express a point of view. Criminal law is used as the main focus topic to develop students' writing, debating and higher order thinking skills.

Music

Students in this subject will be able to develop their conceptual understanding of music as a unique form of communication, with its own language and cultural influences. This elective enables students to develop instrumental skills for beginners and accomplished musicians, offering the opportunity to create and perform music on a preferred and new instrument (recorder, voice or percussion) in a creative, free-spirited and collaborative way.

Physics

Students have the opportunity to undertake Physics study across four possible subjects (Physics A to D). Topics students are introduced to include the fundamental laws of classical mechanics, electromagnetic waves and optics, electricity and magnetism in the physical environment, and revolutions in modern physics. Students will use algebraic, as well as graphical representations to perform relevant calculations and data analysis.

Research Methods^{*}

Students have the option of developing their conceptual understanding of fundamental research principles and approaches in qualitative and quantitative research in two separate subject offerings. Students are shown how to assess the validity and reliability of collected data, and practise their report writing skills for research investigations.

Foundation Studies (Extended) 5 week preliminary program

Foundation English

This subject enables students to develop their reading, writing, listening, comprehension and speaking skills via a range of learning modes, including in-class work and language immersion activities. An explicit focus of this subject is placed on English language structure and socio-cultural aspects of the English language in an Australian setting.

Mathematics in Society

This subject enables students to develop their language and mathematical skills through a variety of learning experiences, which are primarily focused on living in Australia. Topics covered include money management, wage comparisons, income tax and the graphing of travel data. Students also gain an appreciation of the financial commitments associated with owning and running a car, as well as weighing up rental versus home ownership options.

Social Psychology of Leisure

This subject enables students to develop their research, analytical and report writing skills whilst gaining an appreciation for Australian culture in a leisure setting. Students will have the opportunity to design a simple research investigation into a relevant topic that interests them, such as gender difference in recreation choices, or the health benefits of leisure.

Australian Landscape

Students in this subject will be given the opportunity to develop their written and oral language skills whilst gaining an understanding of the geographical, historical and cultural constructs of Australia. A range of in-class activities and language immersion activities in Canberra and beyond will enable students to gain a multifaceted view of Australia.

^{*} Shape of the Australian Curriculum: Mathematics, May 2009, ACARA, p.4.

[^] Compulsory courses Qualitative and Quantitative Research Methods are summarised in the elective overview provided for Research Methods and Logic, and Critical Reasoning is summarised within Critical Thinking.

ANU

entry requirements

The following is a guide for entry to ANU from ANUC Foundation Studies and ANU Express.

This information is a guide only and is subject to change without notice.

Please go to the ANU website for the most up-to-date information:

anu.edu.au/study/apply

Flexible Vertical Double Degree applications

Flexible Vertical Double Degree programs combine a Bachelor degree and a Master degree from related disciplines for depth of knowledge and specialist skills or combine degrees from different disciplines for breadth and transferrable skills.

Choose your Flexible Vertical Double Degree from one of these groups:

Business, Humanities and Social Sciences, Science and Law

Find out more by visiting: **anu.edu.au/study/apply/flexible-vertical-double-degree-applications**



College	Program	Overall score	Prerequisites and other requirements	Duration
ANU College of Arts & Social Sciences	B Archaeological Practice	74%	–	3 years
	B Arts	74%	–	3 years
	B Art History & Curatorship	74%	–	3 years
	B Classical Studies	74%	–	3 years
	B Criminology	74%	–	3 years
	B Development Studies	74%	–	3 years
	B European Studies	74%	–	3 years
	B International Relations	87%	–	3 years
	B Languages	74%	–	3 years
	B Middle Eastern & Central Asian Studies	74%	–	3 years
	B Music	74%	Audition by submission of DVD/CD recording for performance stream only	3 years
	B Political Science	87%	–	3 years
	B Policy Studies	74%	–	3 years
	B Politics, Philosophy and Economics	94%	–	3 years
ANU College of Asia & the Pacific	B Asian Studies	74%	–	3 years
	B International Security Studies	87%	–	3 years
	B Pacific Studies	74%	–	3 years
ANU College of Business & Economics	B Accounting	83%	–	3 years
	B Actuarial Studies	Case-by-case	Advanced Maths	3 years
	B Business Administration	82%	–	3 years
	B Commerce	82%	–	3 years
	B Economics	83%	–	3 years
	B Finance	83%	–	3 years
	B International Business	83% February intake only	–	3 years
	B Statistics	83%	–	3 years
	B Finance, Economics & Statistics (Hons)	97%	Advanced Maths	4 years
	B Social Sciences (Hons in Actuarial Studies & Economics)	Case-by-case	Advanced Maths	4 years
ANU College of Engineering & Computer Sciences	B Advanced Computing (Hons)	87%	Advanced Maths	4 years
	B Advanced Computing (R & D) (Hons)	97%	Case by case. College approval required.	4 years
	B Applied Data Analytics	93%	–	3 Years
	B Engineering (Hons)	87%	Advanced Maths	4 years
	B Engineering (R & D) (Hons)	97 %	Case by case. College approval required.	4 years
	B Information Technology	74%	Advanced Maths	3 years
	B Software Engineering (Hons)	83%	Advanced Maths	4 years
ANU College of Law	B Laws (Hons)	96%	85% in Advanced Academic English. Case by case. College approval required.	4 years
ANU Joint Colleges of Science	B Biotechnology	74% February start only	Chemistry	3 years
	B Genetics	87% February start only	Chemistry	3 years
	B Health Science	87% February start only	–	3 years
	B Medical Science	87% February start only	Chemistry	3 years
	B Psychology (Hons)	93%	–	4 years
	B Science	74%	–	3 years
	B Science (Psychology)	74%	–	3 years
	B Science (Adv) (Hons)	93%	–	4 years
	B Environmental & Sustainability	74%	–	3 years
	B Environmental & Sustainability (Adv) (Hons)	93%	–	4 years
	B Mathematical Sciences	93% February start only	Advanced Maths	4 years

Applicants are advised that assessment is on the basis of the latest qualification attempted and/or achieved.

The University reserves the right to alter or discontinue its programs as required. The scores published should be used as a guide only and the University may vary these requirements at any time.

ANU Diploma of Computing

Start your pathway to a Bachelor of Information Technology and a dynamic, global and fast changing career.

Why study the ANU Diploma of Computing?

The ANU Diploma of Computing is an exciting pathway enabling students to progress to ANU and follow their passion. The diploma prepares students with the skills and knowledge required to progress into the second year of a Bachelor of Information Technology at The Australian National University.

Course structure and content

You will be required to complete 48 units of study over the two semesters of eighteen weeks each.

The following courses are compulsory:

ANUC1101	Professional Communication
ANUC1001	Business Information Systems
ANUC1100	Introduction to Programming and Algorithms
ANUC1003	Algebra and Calculus Methods
ANUC1005	Discrete Mathematical Models
ANUC1710	Web Development and Design
ANUC1110	Introduction to Software Systems
ANUC2400	Relational Databases

2019 Intake dates

- 25 February
- 22 July

Progression

Please refer to: programsandcourses.anu.edu.au/program/ECOMP for progression information.

The transition from the Diploma to the Bachelor will enable you to complete a Bachelor of Information Technology after two additional years of study for the following majors:

- Computational Foundations
- Computer Engineering
- Human-Centric Computing
- Information Systems
- Information-Intensive Computing
- Intelligent Systems
- Software Development



Computing and Information Systems fields of study at ANU were awarded

5 stars

for graduate starting salaries and graduate employments.

2018 Good Universities Guide



ANU Diploma of Creative Design

Your pathway to a Bachelor of Design: opening the door to your dream career.

Why study the ANU Diploma of Creative Design?

In order to progress to the Bachelor of Design you must complete the Diploma of Creative Design with no more than one fail or incomplete grade.

Please refer to: programsandcourses.anu.edu.au/program/EDESN for progression information.

The Diploma encompasses both classical and digital courses that provide a comprehensive awareness of the past and future of design. Students gain a holistic view of design, development and programming that is essential for their future studies and career.

This pathway option is suitable for students who have not met the portfolio requirement for direct entry into the Bachelor of Design.

Course structure and content

You will be required to complete 48 units of study over the two semesters of eighteen weeks each.

The following courses are compulsory:

- ANUC1101** Professional Communication
- ANUC1113** Digital Culture: Being Human in the Information Age
- ANUC1120** Art and Design Histories: Making and Meaning
- ANUC1121** Visual Communication 1
- ANUC1122** Precise Drawing and Model Making
- ANUC1710** Web Development and Design

Students choose one of the following two courses:

- ANUC1123** Figure and Life
- ANUC1124** Image and Object

Students choose one of the following two courses:

- ANUC1100** Introduction to Programming and Algorithms
- ANUC1104** Introduction to Social Psychology

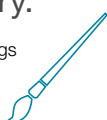
2019 Intake date

- 25 February
- 22 July



ANU ranked **1st**
in Australia in the Arts and
Humanities category.

2018 THE World University Rankings
by Subject



ANU Diploma of Liberal Studies

Your pathway to a Bachelor of Arts provides you with core critical analysis, written and oral skills to prepare you for the multifaceted career opportunities that await.

Why study the ANU Diploma of Liberal Studies?

The ANU Diploma of Liberal Studies is designed for students who are interested in studying a Bachelor of Arts at ANU. The diploma provides a strong basis from which to progress into the second year of a Bachelor of Arts at The Australian National University.

Please visit programsandcourses.anu.edu.au/2019/program/ELIBS for more information regarding progression.

Successfully completing the Diploma will allow students to complete a Bachelor of Arts after only two additional years of study for the following majors:

- Anthropology
- Criminology
- Development Studies
- English
- History
- International Relations
- Philosophy
- Political Science
- Sociology

Course structure and content

You will be required to complete 48 units of study over the two semesters of eighteen weeks each.

The following courses are compulsory:

- ANUC1101** Professional Communication
- ANUC1104** Introduction to Social Psychology
- ANUC1105** Introduction to International Relations: Foundations and Concepts
- ANUC1107** Logic and Critical Reasoning
- ANUC1108** Terror to Terrorism: A History
- ANUC1109** Close Encounters: How to Read Literature
- ANUC1113** Digital Culture: Being Human in the Information Age

Students choose one of the following two courses:

- ANUC1102** Culture and Human Diversity: Introducing Anthropology
- ANUC1103** Global Citizen: Culture, Development and Inequality

2019 Intake dates

- 25 February
- 22 July



ANU graduates are Australia's most
employable

THE Global University Employability
Rankings 2017



ANU Diploma of Music

Follow your passion by studying the pathway to a Bachelor of Music that opens the door to your dream career.

Why study the ANU Diploma of Music?

The ANU Diploma of Music is an exciting pathway enabling students to progress to ANU and follow their passion. The diploma prepares students with the skills and knowledge required to progress into the second year of a Bachelor of Music.

Course structure and content

You are required to complete 48 units of study over the two semesters of eighteen weeks each.

The following courses are compulsory:

ANUC1101	Professional Communication
ANUC1104	Introduction to Social Psychology
ANUC1107	Logic and Critical Reasoning
ANUC1111	Music Performance 1
ANUC1112	Music Performance 2
ANUC1113	Digital Culture: Being Human in the Information Age
ANUC1119	Music From 1900 to the Present: A Century of Crisis and Change
ANUC1135	Music Theory and Aural Skills 1 [^]
ANUC1136	Music Theory and Aural Skills 2 [^]
ANUC1137	Music Theory and Aural Skills 3 [^]

2019 Intake date

- 25 February

Progression

Please visit programsandcourses.anu.edu.au/program/EMUSI for more information regarding progression.

The Bachelor of Music

The ANU Bachelor of Music prepares you for the 'portfolio' career followed by most modern music professionals. A successful contemporary music career requires not only advanced skills in performance, composition, improvisation and other areas of creative practice, but also familiarity with music technology. It also requires the ability to work as an educator and facilitator of community music, and as a cultural entrepreneur.

This degree is designed to reflect music as it is understood and practised in contemporary Australian society. This education experience covers all genres including classical, jazz, contemporary, folk and world music.

The transition from the diploma to the bachelor will allow you to complete a Bachelor of Music after only two additional years of study for the following majors[•]:

- Performance
- Music Technology
- Musicology



[•] Enrolment in other programs and majors is permitted, however students may be required to complete additional requisite courses to meet program rules. Note that enrolment in the flexible double degree is not available. Note also that further performance courses are available only to students who enrol in the Bachelor of Music.

[^]Students will sit a placement test with the School of Music and complete one of these courses

ANU Diploma of Science

Whether you enjoy studying Biology, Chemistry or Physics, the pathway to the Bachelor of Science is designed to fit your scientific study interests.

Why study the ANU Diploma of Science?

Do you have broad interests you just can't pin down? Are you curious about things from parasites to planets and everything in between? With the ANU Diploma of Science tailored program, you can explore all your interests in a high-support, high-challenge environment.

The ANU Diploma of Science is a tailored pathway, enabling you to progress into the Bachelor of Science. You will develop the academic knowledge and study skills, critical thinking and communication skills that support success at Bachelor level. If you aspire to join the Bachelor of Science this program may provide you with an alternative pathway to your future at ANU.

Progression

Please visit programsandcourses.anu.edu.au/program/ESCIE for more information regarding progression.

Course structure and content

You are required to pass a total of 8 courses.

Compulsory course:

ANUC1101 Professional Communication

Plus four courses from two of the following Science Disciplines:

Biology

ANUC1125 Biology 1

ANUC1126 Biology 2

Chemistry

ANUC1127 Chemistry 1

ANUC1128 Chemistry 2

Computer Science

ANUC1100 Introduction to Programming and Algorithms

ANUC1110 Introduction to Software Systems

Mathematics

ANUC1129 Mathematics and Applications 1

ANUC1130 Mathematics and Applications 2

Physics

ANUC1131 Physics 1

ANUC1132 Physics 2

Psychology

ANUC1133 Psychology 1: Understanding Mind, Brain and Behaviour

ANUC1134 Psychology 2: Understanding People in Context



Plus three courses chosen from either the Science Disciplines list or from the following courses:

ANUC1003 Algebra and Calculus Methods

ANUC1005 Discrete Mathematical Models

ANUC1102 Culture and Human Diversity: Introducing Anthropology

ANUC1103 Global Citizen: Culture, Development and Inequality

ANUC1104 Introduction to Social Psychology

ANUC1107 Logic and Critical Reasoning

ANUC1710 Web Development and Design

2019 Intake date

- 25 February

Science and Mathematics fields of study at ANU were awarded

5 stars

for educational experience and graduate employment.



2018 Good Universities Guide

Diploma entry requirements

Entry into each of the ANU Diploma programs is dependent on English language and academic entry requirements.

This information is a guide only and is subject to change without notice.

For the most current information, please visit anucollege.edu.au

English language

English Test	
IELTS Academic	6.0 (no band less than 5.5)
TOEFL PB	550 (TWE 4.0)
TOEFL IBT	68 (writing no less than 18)
PTE Academic	57 (minimum score of 50 in each section)

Academic

Country	Qualification	Entry requirement
Australia	ATAR ANUC Foundation Studies Programs	70 59% to 73%
Bangladesh	1 year tertiary studies	On a case by case basis
Bhutan	1 year tertiary studies	On a case by case basis
	Senior Middle 3	80%
	Gao Kao	480 324 (67.5% of total score) 660 446 750 506 900 608
China		Best of 4, aggregate of 11
Hong Kong	HKDSE	Assessed on the best 4 subjects excluding Chinese Language, Physical Education, Technology and Living, Tourism and Hospitality, Health Management and Social Care, and Religious Studies where 5**= 6; 5*= 5.5; 5 = 5; 4 = 4; 3 =3; 2 = 2; and 1 = 1 HKDSE must include Core Maths & Extended Maths 2 for Diploma of Computing.
India	ISC	ISC 75%
India	AISSC	Best 4 externally examined subjects, aggregate of 9
Indonesia	SMA3	Ujian Nasional (UN) GPA 7.5 in 4 academic subjects
International Baccalaureate		25
Japan	Upper Secondary School Certificate of Graduation (Year 3)	Upper Secondary School Certificate of Graduation (Year 3) – average of 3.5 in academic subjects
Malaysia	STPM UEC	Best 3 with minimum 2 C+ and 1 C, total 5 Aggregate of 24 across best 6 subjects
Nepal	Higher Secondary School Certificate	(10 + 1) 80%
Pakistan	1 year tertiary studies	1 year tertiary studies on a case by case basis
Russian Federation	Attestat o Srednem (Polnom) Obschem Obrazovanii (Certificate of [Complete] Education)	GPA of 4.5 and Unified State Examination Certificate
Singapore	A level	8 aggregate best 3 H2 (A=5, B=4, C=3, D=2, E=1) and best 1 H1 (a=2.5, b=2, c=1.5, d=1, e=0.5)
Saudi Arabia	1 year tertiary studies	On a case by case basis
South Korea	CSAT	Score of 305
Sri Lanka	A levels	Best 3 subjects with an aggregate of 5
Taiwan	GSAT	5 Subjects with a grade of 55
Thailand	Matayom 6	GPA 2.8
United Arab Emirates	1 year tertiary studies	On a case by case basis
United Kingdom	A levels	Best of 3, 10 points or best of 4, 12 points (A*=6, A=5, B=4, C=3, D=2, E=1)
United States	Accredited American high school diploma	Successful completed an accredited US high school diploma with a GPA of at least 2.0 and one of the following: SAT score of 1090 (after March 2016 out of 1600) ACT score of 21
Vietnam	Year 12 Graduation Diploma	GPA 7.5

Applicants are advised that assessment is on the basis of the latest qualification attempted and/or achieved.

The University reserves the right to alter or discontinue its programs as required. The scores published should be used as a guide only and the University may vary these requirements at any time.

ANU Access English

This course will help you improve your English language skills in an academic setting and to develop the study skills needed for university.

ANU Access English is a 10-week intensive course designed to equip international students with the academic skills and knowledge required to transition successfully to courses at ANU.

Course content

ANU Access English consists of 20 hours per week of face-to-face classroom instruction, with 12 hours per week allocated to reading/writing components and 8 hours per week to listening/speaking components. In the ANU Access English course, you can expect to improve your:

- research and critical thinking skills
- academic reading and writing skills, including how to write an academic essay
- listening and note-taking skills, including how to make notes in lectures
- presentation, discussion and teamwork skills, including how to deliver an oral presentation, how to participate in tutorial discussions and how to work on group projects.

There is no scheduled holiday break during the 10-week course.

Entry requirements

To directly enrol in the course, you must have an overall IELTS Academic score of 6.0 with a minimum band score of 5.5 in each skill. Students who successfully complete AEP 4 can also enter the course.*

Assessment methods

There is no final examination for Access English therefore to successfully complete and pass the course, you are to attempt all assessment tasks and achieve a total mark of 60% (or above).

Progression requirements

ANU Access English provides entry to regular degree programs at ANU when you achieve an overall grade of 60 per cent or above. Please note that Access English does not provide direct entry to Medicine, or the Australian National Internships Program. For full policy details on ANU English language admission requirements for students visit policies.anu.edu.au/ppi/document/ANUP_000408

2019 Intake dates

- 25 March
- 29 April
- 08 July
- 08 October
- 11 November



*Applicants are advised that assessment is on the basis of the latest English result achieved.

The University reserves the right to alter or discontinue its programs as required. The scores published should be used as a guide only and the University may vary these requirements at any time.



I was used to having a kind of gap between teachers and students, but it's different here. They're so friendly, you can almost consider them as friends. They're very supportive. If you fall behind, they do their best to help you.

Ludo, Italy

ANUC Foundation Studies student

Academic English Preparation

Pathway to ANUC Foundation Studies, ANU Diplomas and ANU Access English

Students at intermediate level and above may be considered for the Academic English Preparation (AEP) program, which prepares students for direct entry to the ANUC Foundation Studies program, ANU Access English course, and to ANU Diplomas.

Course content

Academic English Preparation (AEP) consists of 24 hours per week of face-to-face classroom instruction, delivered in ten-week modules.

Each 10-week period of study in AEP is designed to prepare you for further study at ANUC and then ANU. At the conclusion of each 10 week study period, there will be a scheduled 1 week holiday break before the commencement of the next study period.

Preparation will include:

Reading academic material

- Understanding lectures
- Expressing ideas through speaking and writing
- Thinking critically about ideas heard and read.

There is no scheduled holiday break during the 10-week study period.

Entry requirements

- You must be at least 16 years old when commencing the course*.
- You must have a minimum IELTS Academic Score of 5.0 (Minimum 4.5 in each band).**

Progression requirement

To successfully complete each level of AEP and to progress to the next course or program of study, you must achieve a minimum score of 60% in each skill.

No additional IELTS is required to progress to the ANUC Foundation Studies program, the ANU Access English course or ANU Diplomas.

Assessment methods

You will be assessed across four skills - Reading, Writing, Speaking and Listening - and are to complete two assessment tasks per skill. There is no final examination for AEP therefore in order to successfully pass the course, you are to achieve a minimum of 60% in each assessment task.

2019 Intake dates

- 07 January
- 04 February
- 25 March
- 29 April
- 11 June
- 15 July
- 26 August
- 08 October
- 11 November

Learning outcomes of AEP

At the end of this course students will have demonstrated the ability to do the following in English:

Language

- Initiate and sustain a general conversation confidently and effectively in routine social situations appropriate to the level of the class.
- Produce appropriate oral and written texts which convey meaning with a degree of fluency and accuracy on a range of topics and in a variety of genres appropriate to the level of the class.

- Comprehend straightforward heard text delivered at normal speed and without major distortion sufficiently to cope in routine social situations appropriate to the level of the class.
- Comprehend with reasonable speed the meaning and identify the structural features of a variety of written texts appropriate to the level of the class.
- Use all basic verb tenses accurately and appropriately and display knowledge of more advanced tenses in clear contexts.
- Manipulate syntax to convey meaning effectively.
- Use a limited variety of lexis and expressions in a range of common topic areas.
- Reproduce sound and speech patterns of English with a reasonable degree of accuracy.

Academic

- Develop research skills using a variety of resources (internet, books, journals etc)
- To use critical thinking skills to evaluate texts, question ideas in texts and those offered by others, and to support arguments using logic.
- To use IT programs to produce documents relevant to each level.
- To develop general study skills

Certificate of Completion

Once you have successfully completed and finished the AEP course, you will receive a Certificate of Completion.

For more information, please visit: anucollege.edu.au/courses/english-language-courses/academic-english-preparation

* Students intending to study at ANU are required to be at least 17 years of age by the first day of the commencing semester. Further details on the ANU Admission Policy can be found at: policies.anu.edu.au/ppl/document/ANUP_000366

** Applicants should be advised that assessment is on the basis of the latest English result achieved.

The University reserves the right to alter or discontinue its programs as required. The scores published should be used as a guide only and the University may vary these requirements at any time.

ANU College AEP options



How to apply

To apply direct

Visit: anucollege.edu.au

OR

Complete the application form and return it to the Admissions Centre, along with the supporting documents outlined in step two.

Admissions Centre

T +61 2 8263 1888

F +61 2 9267 0531

E anziscadmissions@studygroup.com

To apply through an agent

Complete the application form and return it to your local representative, along with the supporting documents outlined in step two.

To find your nearest local representative, please refer to:

anucollege.edu.au/apply/find-agent



Step 1

Complete all sections of the international application for admission form.



Step 2

Attach the following documents:

- Certified copies of your academic qualifications (translated into English)
- Evidence of English language proficiency
- A copy of your passport, visa or birth certificate.



Step 3

Submit your application to: our Admissions Centre by post, email or locally through an authorised education agent.



Step 4

Your application will be reviewed for eligibility and you will be notified in writing of the outcome.

Deferment: Students who have been granted a student visa, but not yet commenced studies, may apply to Study Group Australia for a delay in the commencement of their studies on the grounds of compassionate or compelling circumstances.

Suspension: Students who have commenced their studies may suspend their studies if there are compassionate or compelling circumstances.

Cancellation: Study Group Australia may cancel a student's enrolment in cases where a course of study is cancelled (terminated) for misbehaviour such as failure to pay fees, breach of the Code of Conduct, course progress or attendance requirements.

International application for admission

Please print clearly in English and in BLOCK letters. Please tick boxes where appropriate.

Local representative information

Agent name	Agent URN
------------	-----------

Student details

Family name		Other names	
Title	Date of birth (dd/mm/yyyy)	Age	Gender: Male <input type="checkbox"/> Female <input type="checkbox"/> (please tick)
Country of birth		Nationality	
Are you a Citizen or Permanent Resident of Australia? Yes <input type="checkbox"/> No <input type="checkbox"/> (please tick)			
Home address			
City		State/Province	
Country		Postcode	
Home telephone number (including country code)		Mobile telephone number (including country code)	
Email			

Parent/alternative contact details

Name	Relationship to student
Home address (if different from student address)	
City	State/Province
Country	Postcode
Home telephone number (including country code)	Mobile telephone number (including country code)
Business telephone number (including country code)	Fax number (including country code)
Email	

ATSI, Citizenship and Visa Details

Are you an Australian Aboriginal or Torres Strait Islander? Yes <input type="checkbox"/> No <input type="checkbox"/>		
Do you currently hold, or have you had an Australian Visa in the past 6 months? Yes <input type="checkbox"/> No <input type="checkbox"/>		
Visa type	Visa subclass	Visa expiry date
Have you applied for a Visa to Australia? Yes <input type="checkbox"/> No <input type="checkbox"/>	Have you had a Visa refused for Australia or any other country? Yes <input type="checkbox"/> No <input type="checkbox"/>	
From which country?	What type of visa did you apply for?	
Have you breached any Visa conditions in any country? Yes <input type="checkbox"/> No <input type="checkbox"/>	Have you been convicted of any crime or offence in any country? Yes <input type="checkbox"/> No <input type="checkbox"/>	
Do you have any family in Australia? Yes <input type="checkbox"/> No <input type="checkbox"/> If yes, which city are they living in?		

Passport details

Passport number	Passport expiry date (dd/mm/yyyy)	Please provide a copy of your current passport
-----------------	-----------------------------------	--

English language

All international students must demonstrate an acceptable level of English proficiency to gain admission to the ANU College programs. Please provide evidence of your English language proficiency by submitting your English language test results taken in the last two years.

Academic IELTS (Score)	Overall	Listening	Reading	Writing	Speaking
Other (please supply)					

For all other tests accepted by the Admissions Department, please refer to anucollege.edu.au

Previous education

Please attach verified copies of all academic transcripts or reports (translated into English).

Name of qualification	Year awarded
Name of school/college/university	
Country/State	Language of instruction
If you are currently completing a qualification, please indicate when you expect to complete this study (mm/yyyy)	

Course selection

Academic English Preparation (AEP)

When would you like to start?	January	February	March	April	May	June	July	August	October	November	Year
-------------------------------	---------	----------	-------	-------	-----	------	------	--------	---------	----------	------

Access English

When would you like to start?	March	April	July	October	November	Year
-------------------------------	-------	-------	------	---------	----------	------

ANUC Foundation Studies Standard (4 terms)

When would you like to start?	January	July	Year
-------------------------------	---------	------	------

ANUC Foundation Studies Extended (Preliminary + 4 terms)

When would you like to start?	May	November	Year
-------------------------------	-----	----------	------

ANUC Foundation Studies Rapid (3 terms)

When would you like to start?	April	October	Year
-------------------------------	-------	---------	------

ANU Diploma in Computing* (2 semesters)

When would you like to start?	February	July	Year
-------------------------------	----------	------	------

ANU Diploma of Creative Design* (2 semesters)

When would you like to start?	February	July	Year
-------------------------------	----------	------	------

ANU Diploma of Liberal Studies* (2 semesters)

When would you like to start?	February	July	Year
-------------------------------	----------	------	------

ANU Diploma of Music* (2 semesters)

When would you like to start?	February	Year
-------------------------------	----------	------

ANU Diploma of Science* (2 semesters)

When would you like to start?	February	Year
-------------------------------	----------	------

ANU Express* (13 weeks)

When would you like to start?	March	September	Year
-------------------------------	-------	-----------	------

*Courses are delivered by Study Group Australia Pty Limited, trading as ANU College, on behalf of The Australian National University.

Package program offer

Undergraduate offer

Do you wish to receive a conditional Packaged Letter of Offer from The Australian National University?	Yes	No	(please tick)
Will you apply for a visa to cover the undergraduate program?	Yes	No	(please tick)

The Undergraduate course I would like to study at The Australian National University is: (in order of preference)

Preference 1	Major
Preference 2	Major
Preference 3	Major

Disability

Do you have a disability, impairment or long-term medical condition which may affect your studies?	Yes	No	(please tick)	If Yes, please indicate the area/s of impairment:				
Acquired brain impairment	Hearing/Deaf	Intellectual	Learning	Physical	Medical condition	Mental illness	Mobility	Vision
If you have a disability, would you like to receive advice on support services, equipment and facilities which may assist you?					Yes	No	(please tick)	

OSHC details (if applicable)

Do you currently hold an OSHC policy?	Yes	No	(please tick)	If Yes, please provide details below.
Name of OSHC provider				
OSHC membership number	OSHC expiry date			

For your convenience, OSHC will be included automatically on your invoice unless you provide us with details of your alternative policy

Please select type of cover you wish to receive: Single	Dual Family*	Multi Family*	(please tick)
---	--------------	---------------	---------------

*If you have selected Dual Family or Multi Family OSHC, please also provide a copy of your marriage certificate.

Declaration and signature (This application must be signed; otherwise it will not be accepted)

I authorise ANU and Study Group Australia Pty Limited trading as ANU College to share and exchange personal and academic information about me for the duration of my enrolment in any program administered by either entity, and later as an alumni of the University if applicable.

I understand and acknowledge that ANU will handle my personal information in accordance with the Privacy Act 1988 and the ANU Privacy Policy. More information about how personal information is handled by The Australian National University can be found in the ANU privacy policy (available at policies.anu.edu.au/ppl/document/ANUP_010007)

I wish to be considered for admission to the course(s) I have shown on this application form. I agree that where I do not meet the entry requirements for the selected course or suite of courses that I will be offered an alternative Study Group course. I declare that to the best of my knowledge the information supplied within this application and the documentation supporting it is correct and complete. I acknowledge that the provision of false or misleading information may result in non-acceptance of the application or immediate exclusion from ANU College. I agree that I have been given the opportunity to be fully informed of all course and regulatory requirements related to my enrolment. I agree to be bound and abide by all conditions, terms, policies, and procedures applicable to my enrolment as amended from time to time. I authorise ANU College, where necessary, to obtain from any other educational institution evidence of my academic records or seek other corroborating evidence with respect to my application. I also understand that ANU College is required under Section 19 of the ESOS Act 2000, to inform the Department of Home Affairs about changes to my course enrolment and any breach of my student visa conditions relating to satisfactory academic performance. I also understand that under the provisions of the ESOS Act 2000, ANU College may release information provided in this application to Australian Commonwealth and State agencies.

ANU College is bound by the Privacy Act 1988 of the Commonwealth of Australia. ANU College collects and uses any personal information provided to itself in accordance with the Act. The type of information and the use and disclosure of that information without any prior approval is set out in the Student Privacy Policy which can be found at anucollege.edu.au. By signing this application I acknowledge that I have read the Student Privacy Policy and consent to the use and disclosure of my personal information as set out in the Student Privacy Policy.

Signed (Student)	Date (dd/mm/yyyy)
Signed (Parent/Legal Guardian*)	Date (dd/mm/yyyy)

*If applicant is under the age of 18.

Note

1. Information provided may be made available to Commonwealth and State agencies and the Director of the Tuition Protection Service, pursuant to obligations under the ESOS Act 2000 and the National Code.

2. Any school-aged dependants accompanying overseas students to Australia will be required to pay full fees if they are enrolled in either a government or non-government school.

Send your application to: Admissions Centre

T: +61 2 8880 5608 E: anziscadmissions@studygroup.com or to your local representative

Provider: Study Group Australia Pty Limited. CRICOS Provider Code: 01682E ABN 88 070 919 327

Provider: The Australian National University. CRICOS Provider Code: 00120C ABN 52 234 063 906

Program fees and additional costs

2019 Intake	Fee (AUS)	First instalment		Second instalment		Third instalment	
Academic English Preparation (AEP) January, February, March, April, June, July, August, October, November (1 term = 10 study weeks)	\$ 4,800	n/a		n/a			
ANU Access English (10 study weeks) 25 March 29 April 08 July 08 October 11 November	\$ 5,850	n/a		n/a			
ANU Diploma of Computing 25 February 22 July	\$ 39,840 \$ 39,840	\$ 19,920 \$ 19,920	On Enrolment	\$ 19,920 \$ 19,920	08/07/2019 10/02/2020		
ANU Diploma of Creative Design 25 February 22 July	\$ 37,920 \$ 37,920	\$ 18,960 \$ 18,960		\$ 18,960 \$ 18,960	08/07/2019 10/02/2020		
ANU Diploma of Liberal Studies 25 February 22 July	\$ 39,840 \$ 39,840	\$ 19,920 \$ 19,920	On Enrolment	\$ 19,920 \$ 19,920	08/07/2019 10/02/2020		
ANU Diploma of Music 25 February	\$ 36,480	\$ 18,240		\$ 18,240	08/07/2019		
ANU Diploma of Science 25 February	\$ 39,980	\$ 19,990	On Enrolment	\$ 19,990	08/07/2019		
ANU Express 08 April 23 September	\$ 18,950 \$ 18,950	\$ 18,950 \$ 18,950	On Enrolment	n/a n/a			
ANU College Foundation Studies Standard 29 January 15 July	\$ 29,900 \$ 29,900	\$ 14,950 \$ 14,950		\$ 14,950 \$ 14,950	01/07/2019 14/01/2020		
ANU College Foundation Studies Rapid 23 April 08 October	\$ 29,900 \$ 29,900	\$ 14,950 \$ 14,950	On Enrolment	\$ 14,950 \$ 14,950	01//07/2019 14/01/2020		
ANU College Foundation Studies Extended 03 June 11 November	\$ 37,400 \$ 37,400	\$ 12,467 \$ 12,467		\$ 12,467 \$ 12,467	01/07/2019 14/01/2020	\$ 12,466 \$ 12,466	14/01/2020 29/06/2020

For information about our Terms and Conditions, please visit anucollege.edu.au/apply/terms-and-conditions

For information on College Policies, please visit anucollege.edu.au/about-anuc/college-policies

Living costs in Canberra

Canberra is an affordable study destination with a high standard of living, but lower costs than Sydney or Melbourne. Like any other city, your living costs in Canberra will vary according to your needs, lifestyle choices and spending habits. As a guide, students should allow at least \$20,290 per year to cover accommodation, food and additional expenses such as transport, phone and internet use, and between \$100 and \$200 for text books.

All costs are in Australian dollars (AU\$) and may vary based on your lifestyle.

Accommodation

- Homestay: \$190-\$330 per person per week
- Rental: \$345-\$505 per person per week*

Other living costs*

- Meal, inexpensive restaurant: \$20
- Fast food meal: \$10.00
- Cappuccino (regular): \$4.13
- Groceries: \$100 per week
- Transport Canberra bus tickets – MyWay Concession (peak): \$1.53
- Movie tickets (Student): \$15.00
- Basic utilities per month (electricity, heating, water, garbage): \$157.25
- Internet per month: \$70.00

Student Services and Amenities Fee (SSAF)**

ANU applies a Student Services and Amenities Fee (SSAF). This is charged for the continued enhancement of university services made available to ANUC students. This once-only fee is payable when confirming enrolment in an ANUC program/course.

- ANUC Foundation programs: Standard/Rapid \$150
- Academic English Preparation (AEP): \$36.25 per 10-week course
- ANU Access English: \$36.25

Overseas Student Health Cover (OSHC)

All international students are required to maintain OSHC for the duration of their student visa.

Students are required to purchase 'Visa Length Cover' which will be outlined on your offer letter and payable with the initial tuition fees. Discounts apply for cover greater than 12 months.

For further details on the fees associated with OSHC please visit anucollege.edu.au

For the full information on our preferred provider Allianz Global Assistance OSHC, please visit oshcallianzassistance.com.au

*Sourced from cost of living comparison site, Numbeo.

**This figure may change.

For information on living costs in Australia and the minimum financial requirements to receive a student visa, please visit www.studyinaustralia.gov.au/english/live-in-australia/living-costs

ANU College
95 Daley Road
The Australian National University
ACT 2601 Australia
T +61 2 6125 6688
F +61 2 6125 8066

Admissions Centre
T +61 2 8263 1888
E anziscquiries@studygroup.com

Students: anucollege.edu.au
Agents: agent.studygroup.com



Follow us on Facebook at www.facebook.com/anucollege



Follow us on Instagram at instagram.com/anucollege

youku 优酷

Follow us on Youku at i.youku.com/anucollege



Take a look at our YouTube videos at www.youtube.com/c/anucollegeeduau



Follow us on google+ www.google.com/+anucollegeeduau



ANU College is part of Study Group, a global leader in preparing students for international academic success and rewarding careers through a life-changing learning experience. Study Group taught more than 60,000 students from more than 150 countries across the UK, Europe, USA, Canada, Australia and New Zealand in 2017.

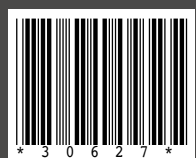
To learn more, please visit studygroup.com



Building Futures is Study Group's non-profit initiative that provides educational opportunities in the developing world. Visit studygroup.com/buildingfutures



**Australian
National
University**



Disclaimer and copyright: This brochure has been compiled for the information of students. To the best of our knowledge the information contained in this booklet is correct at the time of printing and may change without notice. Study Group Australia Pty Limited accepts no responsibility for any errors, nor any liability for any consequences that may follow from any person's use of the material. All content and pictures contained within this publication are copyright of Study Group Australia Pty Limited trading as ANU College and cannot be reproduced without prior written consent from Study Group Australia Pty Limited. All information contained is current at time of print in January 2019.

Provider: Study Group Australia Pty Limited CRICOS Provider Code: 01682E ABN 88 070 919 327

Provider: The Australian National University CRICOS Provider Code: 00120C ABN 52 234 063 906



Please recycle this brochure after use