



UNIVERSITY OF  
**WAIKATO  
COLLEGE**  
*Te Kura Huanui*

# UNIVERSITY OF WAIKATO COLLEGE

YOUR GATEWAY TO A DEGREE AT THE  
UNIVERSITY OF WAIKATO



# WELCOME KIA ORA



We are delighted that you are considering the University of Waikato College for your pathway studies to the University of Waikato. The University of Waikato College provides a dynamic and interactive learning environment for you to build your study skills, improve your English language competency and provide you with specialist academic support.

Your future is waiting at the University of Waikato College, so go on, take your first step now.

## THE UNIVERSITY OF WAIKATO

Offering a premium academic education and unique student experience, the University of Waikato will ensure you graduate career-ready with a qualification recognised world-wide.

Here's just some of the reasons why the University of Waikato is the right choice for you;

- The Waikato Management School holds a Triple Crown Accreditation, placing it firmly in the top 1% of business schools globally
- By subject, the Waikato Management School ranked number 1 in New Zealand for Business & Economics
- The University holds a QS 5 star ranking
- The University offers world class research and cutting edge facilities
- The Hamilton campus is located in the city that won the 'Most Beautiful Large City' award, 2020.

If you are looking for a world class education, in a supportive environment and a beautiful location, then the University of Waikato is perfect for you.

## WELCOME TO NEW ZEALAND

New Zealand is a multicultural and peaceful country with beautiful scenery. Home to inquiring minds and innovative industries that are looking to the future, New Zealand has a unique indigenous cultural value – 'kaitiakitanga' – that strives to care for the world in a way that future generations can look forward to.

## HAMILTON

The University of Waikato College is nestled in the heart of the University's campus in Hamilton, one of New Zealand's fastest growing cities. Located in the Waikato region of the North Island, Hamilton is the fourth largest city in New Zealand and is just a one-and-a-half-hour drive south of Auckland.

The city has an eclectic food scene reflective of its multicultural community. You will also find stunning public gardens to explore and cultural festivals throughout the year. Hamilton has a lower cost of living compared to other cities in New Zealand, enabling you to make the most of your time here as a student.



# DISCOVER OUR COURSES

The University of Waikato College offers a range of programmes suitable for students at different stages of their academic journey. Whether you're looking to undertake an undergraduate degree, post-graduate degree, or simply improve your English fluency, the University of Waikato College is here to support you in achieving your academic goals. Now it's time to find the right programme for you.

## FOUNDATION STUDIES

The Certificate of Attainment in Foundation Studies is a pathway programme that prepares you for university studies and provides entry to most of the University of Waikato undergraduate degrees.

There are five- and eight- month course options (one or two trimesters).

If you are an offshore international student, you can now study this programme online until you are able to join us on campus in New Zealand.

### Foundation Studies programme – standard

**Intakes:** February, July, November 2022

**Programme length:** 8-9 months (2 trimesters)

**English Entry Requirements:** IELTS score of 5.5 (with Writing no less than 5.0), or equivalent

**Award:** Certificate Level 4 (NZQF)

### Foundation Studies programme – accelerated

**Intakes:** February, July, November 2022

**Programme length:** 5 months (1 trimesters)

**English Entry Requirements:** IELTS score of 5.5 (with no band less than 5.0 and Writing no less than 5.5), or equivalent

**Award:** Certificate Level 4 (NZQF)

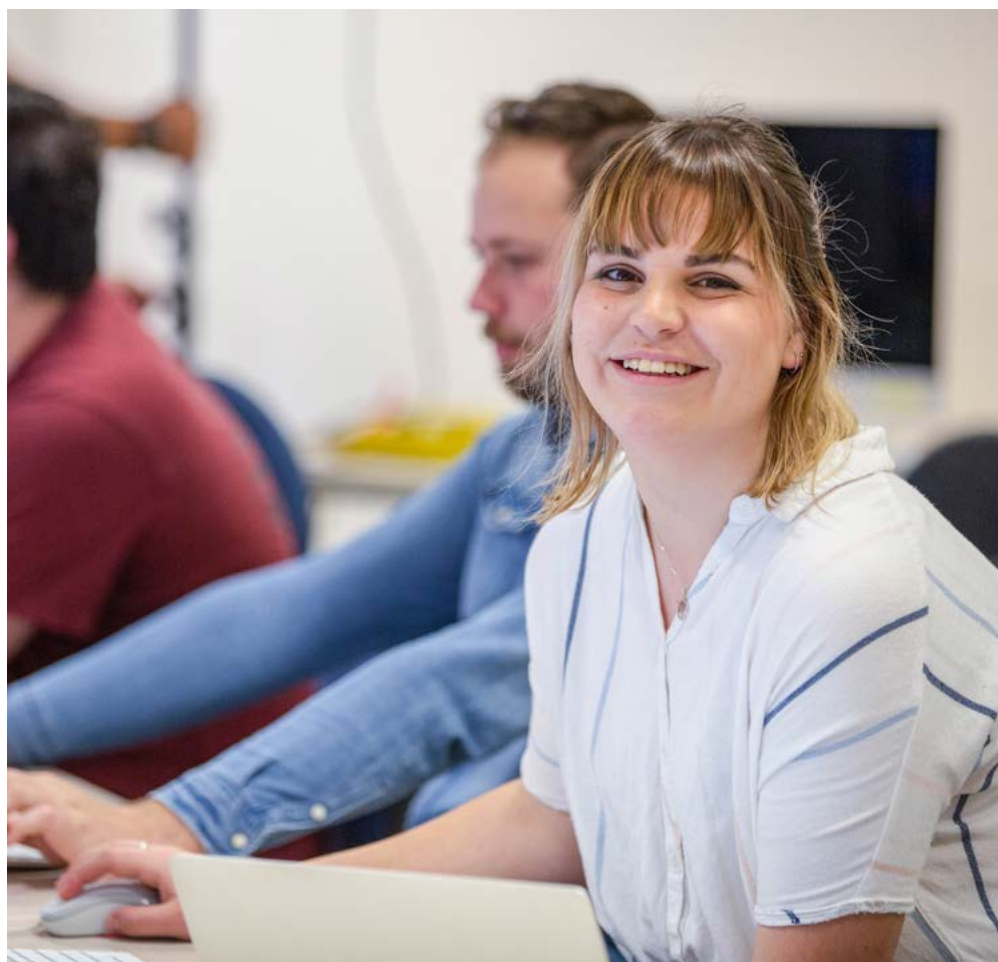
Find out more about the programme including fees, academic and additional English requirements and how to apply by visiting [pathways.waikato.ac.nz/programmes/foundation-studies](https://pathways.waikato.ac.nz/programmes/foundation-studies)



"Studying at Waikato has completely changed me. For example, the way I think and the way I behave towards people. I learned so much from my experience. Once I finish my foundation programme, I'm planning to do Environmental Planning at the University."

### CHRISTIAN FROM INDONESIA

Completed the Certificate of Attainment in Foundation Studies and is now studying a Bachelor of Environmental Planning at the University of Waikato







## ENGLISH LANGUAGE COURSES

Our English language programmes are designed for students who seek to improve their English language skills.

## ACADEMIC ENGLISH LANGUAGE

Our Certificate of Attainment in English Language (Academic English preparation programme) is designed for students who need to improve their English language skills in order to study an academic course. The Academic English Language programme provides direct entry to degree study without the need for further IELTS testing. The programme offers intakes in February, May, August and October 2022.

Find out more about the programme including fees, English requirements and how to apply by visiting [pathways.waikato.ac.nz/programmes/english-language](https://pathways.waikato.ac.nz/programmes/english-language)

## GENERAL ENGLISH

The General English course offers an exciting opportunity for people from around the world to learn everyday English in an English-speaking environment. The programme has a general focus suitable for students who need English for everyday contexts or for students preparing to enter the Academic English Language programme.

The General English language programme includes core language skills and vocabulary, fluency and accuracy in listening, speaking, reading and writing.

Click here to find out more [pathways.waikato.ac.nz/programmes/general-english](https://pathways.waikato.ac.nz/programmes/general-english)

# DIPLOMAS

Undertaking an International Diploma or Pre-Masters Diploma will prepare you to start your chosen degree, whilst giving you extra support with Academic English.

## INTERNATIONAL DIPLOMA (BUSINESS)

Kickstart your career in the business field with the International Diploma (Business). This programme incorporates the first-year papers of the Bachelor of Business with English language development, a complete programme of academic support and other development activities to ensure you are well equipped to undertake higher education studies in New Zealand.

Once you have completed the International Diploma (Business), you will be eligible for direct entry into year two of the Bachelor of Business (BBus) at the Waikato Management School, a Triple Crown accredited Business School.

### Programme information

**English entry requirements:** An overall IELTS score of 5.5 (with no band less than 5.0) or equivalent.

**Academic entry requirements:** The equivalent of 32 credits across University Entrance approved subjects or equivalent.

**Duration:** 1 year (three trimesters)

**Start Dates:** March 2022, November 2022

**Points:** 120

**Award:** Diploma Level 5 (NZQF)

**Location:** Hamilton

Find out more about the programme including fees, additional academic and English requirements and how to apply by visiting [pathways.waikato.ac.nz/programmes/diploma/business](https://pathways.waikato.ac.nz/programmes/diploma/business)

## INTERNATIONAL DIPLOMA (COMPUTER SCIENCE)

Computer science is rapidly changing the world we live in and there will be an increasingly high demand for qualified computer professionals in an ever-changing climate.

Once you have completed the International Diploma (Computer Science), you will be eligible to enrol into year two of the Bachelor of Science (BSc), majoring in Computer Science or Data Analytics, or the Bachelor of Computer Science (BCompSc) at the University of Waikato.

### Programme information

**English entry requirements:** An overall IELTS score of 5.5 (with no band less than 5.0) or equivalent.

**Academic entry requirements:** The equivalent of 32 credits across University Entrance approved subjects or equivalent.

**Duration:** 1 year (three trimesters)

**Start Dates:** March 2022

**Points:** 120

**Award:** Diploma Level 5 (NZQF)

**Location:** Hamilton

Find out more about the programme including fees, additional academic and English requirements and how to apply by visiting [pathways.waikato.ac.nz/programmes/diploma/computer-science](https://pathways.waikato.ac.nz/programmes/diploma/computer-science)

## DIPLOMA IN POSTGRADUATION PREPARATION – PRE-MASTERS

The Diploma in Postgraduate Preparation – Pre-Masters (DipPP) aims to prepare international students for a postgraduate degree at the Waikato Management School or the School of Computing and Mathematical Sciences. Once successfully completed, you will gain entry to a selection of world-class Masters degrees at the University of Waikato.

### Programme information

**English entry requirements:** An overall IELTS score of 6.0 (with no band less than 5.5) or equivalent.

**Academic entry requirements:** At least 2 years' full time successful tertiary study and a qualification equivalent to NZQF Level 6.

**Duration:** 2 trimesters

**Start Dates:** July 2022, November 2022

**Points:** 120

**Award:** Diploma Level 7 (NZQF)

**Location:** Hamilton

Find out more about the programme including fees, additional academic and English requirements and how to apply by visiting [pathways.waikato.ac.nz/programmes/pre-masters-diploma](https://pathways.waikato.ac.nz/programmes/pre-masters-diploma)

## TRIPLE CROWN ACCREDITATION

"Triple Crown accreditation" is a term found in business school and reputable academic institutions of professional and career advancement. Receiving a certificate or degree from a school with a Triple Crown accreditation is worth its weight in gold in business and the achievement suggests not only the stellar reputation of the school but also the individual's strong work ethic and drive to excel in business overall. For more information visit [masterstart.com/blog/bright-future/triple-crown-accreditation-and-what-it-means](https://masterstart.com/blog/bright-future/triple-crown-accreditation-and-what-it-means)



## DID YOU KNOW?

The University of Waikato ranked number one in New Zealand for Business and Economics in the 2022 Times Higher Education (THE) World University Rankings.

## HOW TO APPLY

To apply directly, visit [pathways.waikato.ac.nz](https://pathways.waikato.ac.nz) and complete the online application form. You can also apply via an authorised education agent near you.

Information about how to accept your offer and pay fees, as well as refunds and administration charges, is available at [pathways.waikato.ac.nz/terms-and-conditions](https://pathways.waikato.ac.nz/terms-and-conditions).



You can now apply for the programmes at University of Waikato College in 2022 using a selection of approved English tests, including the Duolingo English Test (DET). For more details including terms and conditions, visit [pathways.waikato.ac.nz/admissions/entry-requirements](https://pathways.waikato.ac.nz/admissions/entry-requirements)

Terms and conditions apply.



"The Foundation programme did help me a lot because it's a transition from the education I had in China to New Zealand. I'm so impressed with how much I've learned. New Zealand is a beautiful, friendly, multicultural country. People are very friendly here."

### YUXIN FROM CHINA

Completed the Certificate of Attainment in Foundation Studies at Waikato Pathways College

Now studying Bachelor of Engineering with Honours (Civil Engineering) at the University of Waikato



THE UNIVERSITY OF  
**WAIKATO**  
*Te Whare Wānanga o Waikato*  
NEW ZEALAND

KO TE TANGATA  
FOR THE PEOPLE

### Disclaimer

This prospectus is intended as a general guide for students considering entry to University of Waikato College from 2022. Courses at the University of Waikato College are delivered by Study Group NZ Limited on behalf of the University of Waikato. Study Group programmes, courses, and fees, as stated in this prospectus or any other Study Group publication, are an expression of intent only and are form no part of any contract between the student and Study Group. All costs and fees are provided in New Zealand dollars (NZD).

To the best of our knowledge the information contained in this booklet is correct at the time of publication and may change without notice. Study Group NZ Limited accepts no responsibility for any errors, nor any liability for any consequences that may follow from any person's use of the material. University of Waikato College's website is the most up to date source of information regarding courses and facilities. Please visit [pathways.waikato.ac.nz](http://pathways.waikato.ac.nz) before making any commitments.

Any agreement with Study Group NZ Limited does not remove the right to take action under New Zealand's consumer protection laws. Both the University of Waikato and Study

Group NZ Limited are signatories of the Education (Pastoral Care of Tertiary and International Learners) Code of Practice 2021. Information on the Code of Practice are available from the New Zealand Qualifications Authority (NZQA) website at [www.nzqa.govt.nz/providers-partners/education-code-of-practice](http://www.nzqa.govt.nz/providers-partners/education-code-of-practice). For information on immigration requirements and student visas to New Zealand, visit [www.immigration.govt.nz](http://www.immigration.govt.nz).

Although reasonable steps are taken by Study Group to provide the courses and services described, Study Group cannot guarantee the provision of any course. Any course may be altered or withdrawn owing to circumstances beyond Study Group's reasonable control. Such circumstances include (but are not limited to) industrial action, lack of demand, departure of key personnel, the effect of any pandemic, change in government policy, withdrawal or reduction of funding, change of law. Study Group will take such steps as are available to it to minimise the effect of any alteration or withdrawal of a course and we will notify the student of such alteration or withdrawal as soon as possible. Such steps may include the offer of a place on an alternative course. For more information, please visit [www.studygroup.com](http://www.studygroup.com).

Terms and conditions, student policies and guidelines (including refund, complaints, and appeals policy) are available at [www.pathways.waikato.ac.nz](http://www.pathways.waikato.ac.nz). If you are under the age of 18, you will be supported by the campus welfare team as required by the Education (Pastoral Care of Tertiary and International Learners) Code of Practice 2021, which is available at [www.nzqa.govt.nz/providers-partners/education-code-of-practice](http://www.nzqa.govt.nz/providers-partners/education-code-of-practice). You must also live in a homestay or designated caregiver accommodation. This can include the halls of residence on campus where available.

The University of Waikato was last audited in 2015 (Cycle 5) by the Academic Quality Agency (AQA) for New Zealand universities. The academic audit (Cycle 6) for the University is ongoing. Details are available on the University of Waikato website at [www.waikato.ac.nz/official-info/academic-audit](http://www.waikato.ac.nz/official-info/academic-audit)

The University of Waikato College is committed to fully complying with the International Student Contract Dispute Resolution Scheme (DRS) rules. For more information, please visit [www.istudent.org.nz](http://www.istudent.org.nz).



The University of Waikato  
Private Bag 3105  
Hamilton 3240  
New Zealand

Phone: +61 2 8263 1888 (International)  
Email: [pathwaysqueries@waikato.ac.nz](mailto:pathwaysqueries@waikato.ac.nz)  
Website: [pathways.waikato.ac.nz](http://pathways.waikato.ac.nz)  
@UniversityWaikatoCollege  
@waikatoUniversity

