



THE UNIVERSITY OF
WAIKATO
Te Whare Wānanga o Waikato

NEW ZEALAND

Pathways to the University of Waikato

2020

pathways.waikato.ac.nz



Welcome to Waikato

Welcome to the University of Waikato, located in Hamilton, New Zealand. The University is truly world-class, ranked 266 in the world.* Experience smaller class sizes, accessible staff, and a welcoming and diverse student community.

Students first

Flexible degree structures allow you to follow your interests and career plans. The University's emphasis on practical experiences means you will be ready to go from the classroom into a successful career.

Bridging the gap to university

Waikato Pathways College offers a variety of courses which will help you progress to the University degree of your choice.

University pathways and English Language Programmes

Our university pathways and English Language programme give you all the tools you need to continue your study at degree level. Students who pass their programme are guaranteed entry to most degrees at the University. An unconditional offer of place will be issued as soon as you have successfully completed your programme at Waikato Pathways College and met degree admission requirements.

Pathway Student Visa

A Pathway Student Visa may be granted for up to a maximum of five years and allows you to undertake up to three consecutive programmes of study on a single student visa. For more information visit immigration.govt.nz

Quality assurance

The University of Waikato took part in the Cycle 5 Academic Audit in association with the Academic Quality Agency for New Zealand Universities (AQA) and received an audit report in 2015. The Cycle 6 Academic Audit is ongoing. Details are available at waikato.ac.nz/official-info/academic-audit/

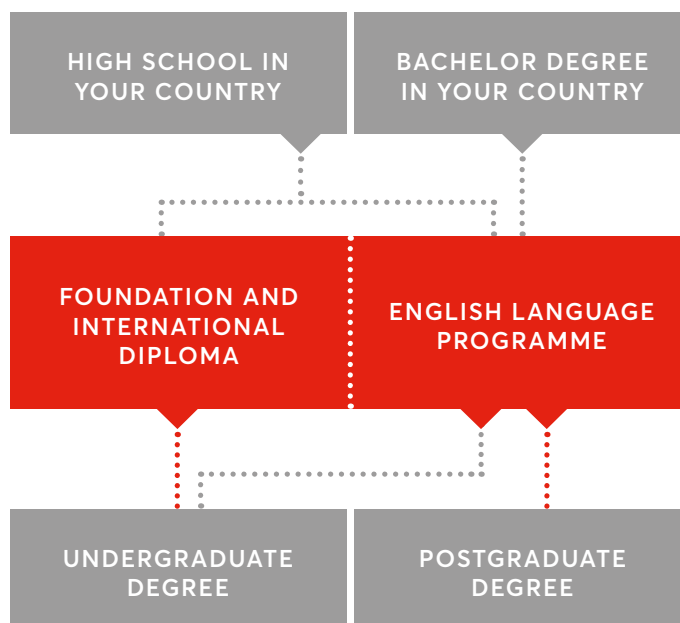
*QS World University Rankings 2020



Key facts

- Student population comprised of more than 80 different nationalities
- Study, live, socialise at our all-in-one campus
- Friendly academic staff
- Ranked 266 in the world (QS World University Rankings 2020)
- Ranked 72 in the world for research quality and impact (citation per faculty) (QS World University Rankings 2020)
- 11 subjects ranked in the top 300 (QS World University Rankings 2019)
- Triple Crown accredited business school

ACADEMIC PATHWAYS





Why study in New Zealand?

Students from around the world choose to study in New Zealand, thanks to its world-renowned education system and high quality of life.





Innovation – New Zealanders are ambitious, innovative thinkers who let little get in the way of achieving big dreams.

Happiness – In the 2019 World Happiness Report, New Zealand is ranked the eighth happiest country.

Cost-effective education – The cost of living in New Zealand is more affordable than in many other countries.*

Employment opportunities – After successfully graduating from a New Zealand university, you are eligible to apply for a three year post-study open work visa.**

Visit the New Zealand skill shortage list to find more opportunities
skillshortages.immigration.govt.nz/assets/uploads/long-term-skill-shortage-list.pdf

Indigenous culture – The culture and traditions of the indigenous Māori people form a vital role in shaping our national identity.

Stunning landscapes – Travel from mountains to beaches to rainforests in one afternoon.

Climate – Our mild climate is perfect for getting out and exploring all year round.

Outdoor lifestyle – New Zealand has plenty of exciting outdoor activities for you to enjoy, including surfing, black water rafting and bungee jumping.

*For more information on living costs in New Zealand, visit newzealandnow.govt.nz

**For more information, visit immigration.govt.nz



Explore unique locations

As a Waikato Pathways College student, you will study at the main University of Waikato campus in Hamilton. This will allow you to feel immersed in the University and student life from the day you arrive.

HAMILTON

Waikato region

Waikato Pathways College is located in Hamilton, one of New Zealand's fastest growing cities.

Located in the centre of the North Island, Hamilton is the fourth largest city in New Zealand and is just a one-and-a-half-hour drive south of Auckland. It has a relaxed and welcoming feel, with a vibrant multicultural community immersed in the indigenous Māori culture. From stunning parks and gardens, to a vibrant urban centre with many shops, restaurants and cafés, the city offers an extensive mix of activities that everyone can enjoy.

Hamilton is surrounded by outstanding beauty, with world-class bike trails, surf beaches and award-winning restaurants. The city itself is a gateway to many of the beautiful features of the Waikato area, including the world famous surfing beaches at Raglan and the Hobbiton movie set at Matamata. For those who like to ski, the high-quality ski slopes of Whakapapa and Turoa at Mount Ruapehu are just a few hours' drive away.

As well as offering a great lifestyle and world-class education opportunities, the Waikato region boasts one of New Zealand's largest and most varied economies. With a local culture of research and innovation, and a central business district experiencing significant increases in employment, the region offers an exciting future for those who choose to call it home.

With a young, smart and innovative population, a rich history and warm and welcoming spirit, you will be spoilt for choice for places to enjoy and relax in Hamilton.

TAURANGA

Bay of Plenty region

Once you have successfully completed your programme at Waikato Pathways College you can choose to study in Tauranga at our city campus, or at our Coastal Marine Station.

Tauranga is New Zealand's fifth largest city and one of New Zealand's most sought-after locations. Home to approximately 130,000 people, the cosmopolitan city is well-known for its blue skies, warm climate, sparkling harbour and relaxed lifestyle.

The Bay of Plenty region boasts miles of beaches, forests, rivers and wineries, as well as great shopping and cafés. The region is bustling with cultural, sporting, and recreational activities.

Tauranga is home to New Zealand's largest export port and fastest-growing population of any city.

Whether you want to dine, shop, explore the captivating culture and history, or relax on golden sand beaches, Tauranga has it all.



Your campus

Be welcomed into a friendly, supportive, and diverse community. The University is known for its innovation, industry-focused curriculum, and smaller class sizes.

Our student community at Waikato Pathways College is made up of people from around the world. The atmosphere at the College will make you feel welcome and help you make new friends when you arrive.

As a graduate of the University of Waikato, you can be confident you have gained the professional and personal skills to be successful in the modern world.

Campus culture

Life on the campus in Hamilton has a welcoming and relaxed atmosphere that will make you feel at home as soon as you arrive. Everything that you will need is available on the campus, including travel services, a bank, a convenience store, a book store, a variety of great cafés and even a hair salon. There is also a medical centre, a pharmacy and a gym for you to use.

Faculties and schools of study

The faculties and schools are the The School of Arts, School of Computing and Mathematical Sciences, School of Education, School of Engineering, School of Health, Sport and Human Performance, Faculty of Law, Faculty of Maori and Indigenous Studies, School of Psychology, School of Science and Waikato Management School.

Transport

The campus is easily accessible by car. It is also served by the public transport network (Bus routes 13 and 17). More information can be found at busit.co.nz

Additional learning facilities

The Student Centre is a state-of-the-art multi-functional facility that provides you with a student-centred learning environment, combining traditional library resources with high-tech IT facilities. The centre is also a central student support hub, carefully designed and built to be environmentally sustainable – light, modern and energy efficient.

The Library consists of the Central Library and Law Library located in the Student Centre, and the Teaching Resources Library located in the TL Block of the Faculty of Education.

Gallagher Academy of Performing Arts is a specially designed performing arts centre, providing venues and teaching rooms for performance programmes in music, theatre, dance and Māori. The Gallagher Academy of Performing Arts hosts music concerts, theatre and dance performances, art and photography exhibitions, festivals and balls.

The staff at Waikato Pathways College

When you study at Waikato Pathways College, you'll be supported by a team of welcoming staff from the day you arrive. Our staff have many years experience in education and working with international students. More information can be found at pathways.waikato.ac.nz/college/meet-the-staff

Campus facilities

Our campus offers a range of facilities for you to use, including:

- Library
 - Student centre
 - Halls of residence
 - Gym and recreation centre
 - Outdoor and indoor swimming pools
 - Sports fields and courts
 - Cafés
 - Banking and ATMs
 - Pharmacy
 - Doctors and nurses
 - Multi-faith chapel and prayer rooms
 - Post office
 - 24 hour computer labs
 - Well being Hub
 - ESports arena
-

Ranked 72 in the world

For research quality and impact (citations per faculty), placing the University in the top 5% of all global ranked institutions.*

*QS World University Rankings 2020



Student experience

You'll discover a friendly and inclusive student community at Waikato. With students from more than 80 different countries, diversity is encouraged and celebrated. The University offers a range of clubs, social events and activities across the academic year to help you relax and enjoy your time here.

Campus culture

The Hamilton campus culture is welcoming and relaxed. Find a bargain at market days by the lake, listen to DJs and live music during cultural hour on Wednesdays on the Village Green, or go for coffee with friends at one of our cafés.

Sports and recreation

Social sport is a great way to make new friends and meet like-minded people. The University offers a range of sports facilities on campus, including one of the best-equipped gyms in the region, a 50-metre swimming pool (open in summer months only), a diving pool, tennis, squash, and netball courts, sports fields and an indoor cricket facility. Join an indoor or outdoor league in a sport such as netball, touch, or six-a-side soccer.

Join a club

Students at Waikato have many talents and interests, catered for by the wide range of clubs and student organisations on campus. With almost 50 student clubs across our campuses, there is something for everyone.

Waikato Students' Union

The Waikato Students' Union (WSU) gives students a strong collective voice on campus and nationwide. WSU also organises activities on campus such as Orientation Week, Clubs' Day, musical performances and guest speakers.

For more information about student experience and life in New Zealand, download our pre-arrival guide: pathways.waikato.ac.nz/pre-arrival-guide

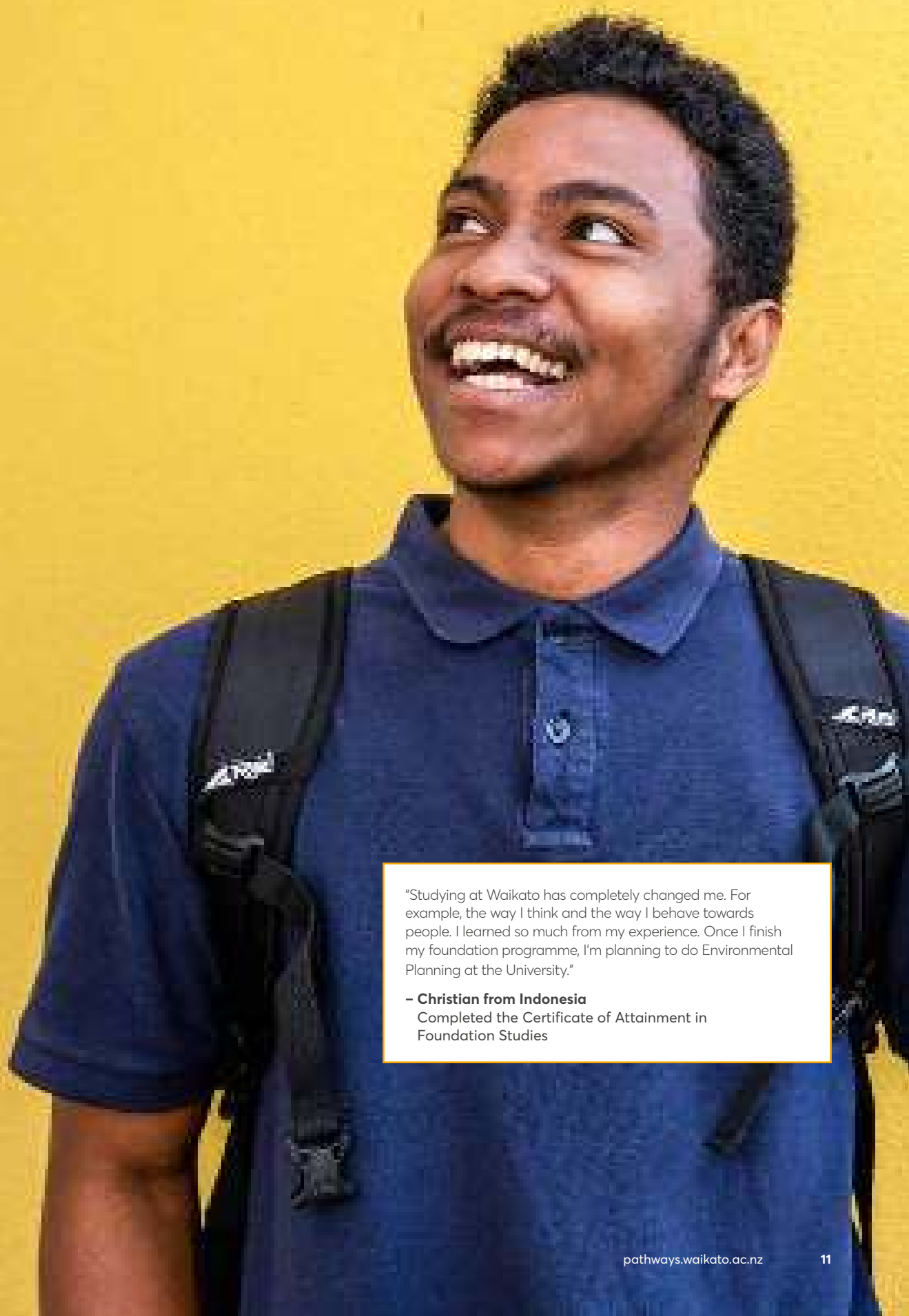
The Wellbeing Hub

This is a dedicated space on our Hamilton campus for all students where you can chill, hang out, study and generally take time out to rest and recharge. Pop in and make a cup of tea and relax on the couches and bean bags, play a board game or do a puzzle, or have a nap in one of the nap stations. There are also wellbeing talks, mindfulness sessions and creative activities. For more information visit waikato.ac.nz/students/wellbeing-hub

ESports arena

Waikato is the first New Zealand university to develop a purpose-built esports arena. The new facility houses 14 high-tech OMEN gaming computers that are used in training, competitions and socialising. Athletes can join our high performance team and compete in the annual Melbourne Esports Open. For more information visit waikato.ac.nz/sports/esports





"Studying at Waikato has completely changed me. For example, the way I think and the way I behave towards people. I learned so much from my experience. Once I finish my foundation programme, I'm planning to do Environmental Planning at the University."

– **Christian from Indonesia**

Completed the Certificate of Attainment in
Foundation Studies

Student support

We are committed to supporting you on your study journey. Our dedicated team provides you with the advice and services you need to ensure your time studying with us is successful and happy.

International Student Services Office

The International Student Services Office has a dedicated team here to help you during your time at the University of Waikato. They oversee:

- International orientation for new students
- Immigration requirements and student visa renewals
- Medical and travel insurance
- New Zealand and international government scholarships
- Study abroad and exchange support
- International student events
- Buddy programme.

Waikato Pathways College student services

There are staff and services within Waikato Pathways College who can support you with all aspects of living and studying in New Zealand. Our staff are qualified professionals who speak a number of languages, and can help you with any issues. When you arrive, you will receive a full orientation programme to help you quickly settle into your new life.

Health and counselling services

Health services for all students are available on campus, including counsellors, doctors, and nurses. Our team of counsellors can help you adjust to university life, as well as assist you with any personal or study-related issues. Waikato has an ecumenical chaplain, a Catholic priest and two Muslim prayer rooms available.

Careers advice

Career Development Services provide free advice and support to current students and recent graduates. The Careers team can assist with career planning, writing job applications, and interview preparation. For more information visit waikato.ac.nz/students/careers

Employability Plus Programme

The Employability Plus Programme gives University of Waikato students the opportunity to gain work-ready skills through volunteer activity, university participation, and attending workshops. For more information visit waikato.ac.nz/go/epp

Academic support

The Student Learning Unit will assist you in developing your study skills, assignment writing and exam preparation. The Student Centre is a state-of-the-art multi-functional facility that provides students with an optimal learning environment, combining traditional library resources with hi-tech IT facilities. There is also a dedicated English language resource centre to support your English language development throughout your studies.

Our student handbook provides you with information about student support, staff, university facilities, accommodation and other information that will help you settle into your new life in New Zealand.

For more information, visit:
pathways.waikato.ac.nz/student-handbook

Students under 18

The University of Waikato has agreed to observe and be bound by the Code of Practice for the Pastoral Care of International Students published by the Ministry of Education. It is our aim to offer all areas of support to ensure our international students enjoy a positive, safe and memorable experience while they study with us.

If you are under the age of 18, you will be supported by one of the International Student Advisers as required by the Code of Practice for the Pastoral Care of International Students.* You must also live in homestay or designated caregiver accommodation. This can include the halls of residence on campus.

*www.nzqa.govt.nz/providers-partners/education-code-of-practice/



Accommodation

Choosing the right accommodation will help you transition smoothly to university life, concentrate on your studies and start building lifelong memories and friendships. A variety of accommodation options are available for you, including homestay, halls of residence, and shared or independent living in houses or apartments.



Homestay

Homestay accommodation is ideal for students who prefer a family-orientated lifestyle. We organise accommodation with friendly homestay families who offer a welcoming and safe environment, support you outside of study time and help you settle in New Zealand. Our homestay families have been carefully selected and are experienced in looking after international students. All hosts have been given police clearance and their homes are inspected by the University before students are placed there.

You will be provided with your own room and your homestay family will provide all your main meals.

Homestays are located within 30 minutes' travel time from the University campus.

Homestay or designated caregiver accommodation is compulsory for international students under the age of 18 years. This can also include the halls of residence on campus. If you are 18 and over, and prefer more independence, you may choose to live in the halls of residence, a shared house, or rent your own house.

Halls of residence

Halls of residence are purpose-built and feature single, furnished rooms with a bed, desk, chair, and wardrobe. Rooms include telephone and internet connections, as well as free WiFi. Communal laundry facilities are available for students to use.

- Fully catered accommodation provides you with your own bedroom where you share bathroom and dining facilities with other students. You are provided with three meals a day, seven days a week.
- Self-catered accommodation is best suited to students who are returning for their second year of study, or mature students. Accommodation is shared with up to five other students, each with their own single bedroom. Cooking and cleaning is often shared among the group.

Whichever option you choose, be sure to take advantage of the common areas to socialise, watch television, play games, prepare meals, and relax.

Shared housing

"Flatting" is when you share accommodation with other students in a private house located off campus. Prior to arrival in New Zealand it is possible to search online for flats or available rooms. We can also assist and advise you on flats or other accommodation options close to our campus.

Independent living

Renting a home for you, or you and your family, is also an option. Prior to arrival in New Zealand it is possible to search online for houses available for rent. We can also assist and advise you on rentals or other accommodation options close to our campus.

Estimated costs:

Halls of residence:

College Hall, Bryant Hall, Student Village	
fully-catered	\$322 - \$370 per week
self-catered	\$180 - \$195 per week

Orchard Park –

self-catered only	\$180 - \$235 per week
-------------------	------------------------

Shared housing	\$350 per week (ENZ.org 2019)
-----------------------	-------------------------------

Homestay

First four weeks	\$1,064 (\$266 per week)
------------------	--------------------------



STUDENT VILLAGE



ORCHARD PARK



BRYANT HALL

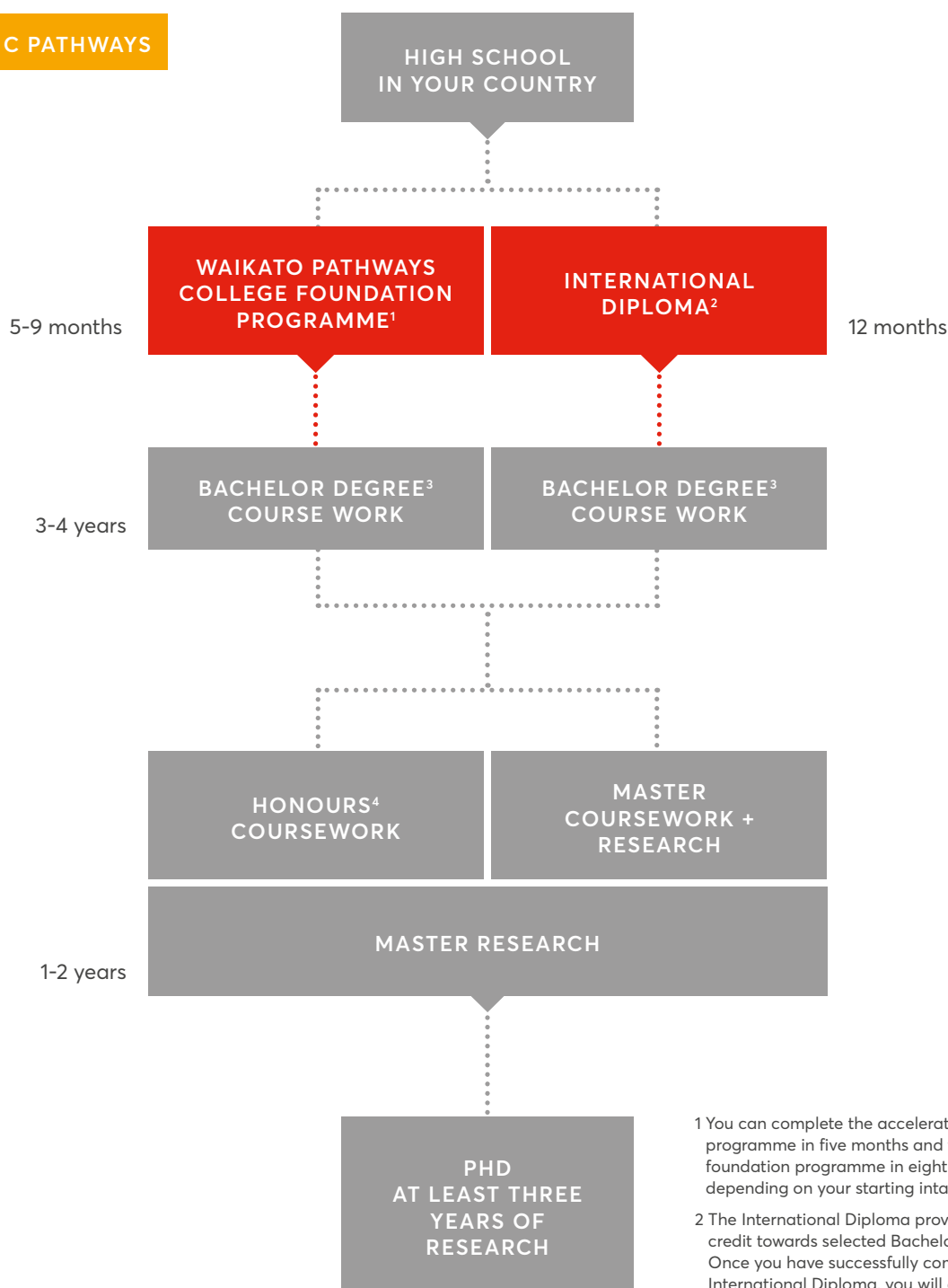


COLLEGE HALL

Pathways to our University

Programmes

ACADEMIC PATHWAYS



1 You can complete the accelerated foundation programme in five months and the standard foundation programme in eight to nine months depending on your starting intake.

2 The International Diploma provides 12 months credit towards selected Bachelor degrees. Once you have successfully completed the International Diploma, you will enter into the second year of your chosen Business or Science degree at the University of Waikato.

3 There are four-year professional bachelor degrees such as the Bachelor of Laws with Honours and the Bachelor of Engineering with Honours.

4 A faculty/school may offer a postgraduate diploma programme as equivalent to an Honours programme.



"The Foundation programme did help me a lot because it's a transition from the education I had in China to New Zealand. I'm so impressed with how much I've learned. New Zealand is a beautiful, friendly, multicultural country. People are very friendly here."

– Yuxin from China

Completed the Certificate of Attainment in Foundation Studies at Waikato Pathways College

Now studying Bachelor of Engineering with Honours (Civil Engineering) at the University of Waikato

Pathways to our University

Foundation Studies

Successful completion of the Certificate of Attainment in Foundation Studies (Foundation Studies programme) guarantees you entry to most University of Waikato undergraduate degrees.

Why choose the Waikato Pathways College Foundation Studies programme?

- Guaranteed entry to most University of Waikato undergraduate degrees upon successful completion of the programme.
- Recognised by all New Zealand universities.
- Gain subject knowledge, skills, leadership and teamwork to prepare for university.
- Flexible intakes (three entry points per year).
- Study on the University's main campus with access to all services and facilities as degree-level students.

Waikato Pathways College offers you:

- Qualified, experienced, and caring teachers.
- A supportive and personalised learning environment.
- Opportunity to mix with domestic students to improve your English skills and make local friends.
- On completion, a Certificate of Attainment in Foundation Studies is issued.



Your route to a University of Waikato undergraduate degree

ACCELERATED	STANDARD
Compulsory subjects: <ul style="list-style-type: none"> English for Foundation 2 Elective subjects (choose three): <ul style="list-style-type: none"> Accounting Arts Biology Business Studies Calculus Chemistry Critical Thought and Expression Mathematics and Statistics Physics Science Social Sciences Study Skills 	Compulsory subjects: <ul style="list-style-type: none"> English for Foundation 1 English for Foundation 2 Study Skills Elective subjects (choose five): <ul style="list-style-type: none"> Accounting Arts Biology Business Studies Calculus Chemistry Critical Thought and Expression Mathematics and Statistics Physics Science Social Sciences
English Language Entry Requirements: <ul style="list-style-type: none"> an IELTS score of 5.5 (with at least 5.5 in the Writing band and no band less than a 5.0), or an iBT (Internet Based TOEFL) minimum score of 46 with a writing score of 18, or a B grade or better and a B grade in Writing at Level 6 in the Certificate of Attainment in English Language, or a PTE Academic overall score of 49 and no less than 40 for Writing. <p>All other evidence is considered on a case-by-case basis.</p>	English Language Entry Requirements: <ul style="list-style-type: none"> an IELTS score of 5.5 (with at least 5.0 in the Writing band), or an iBT (Internet Based TOEFL) minimum score of 46 with a writing score of 14, or a B grade or better at Level 6 in the Certificate of Attainment in English Language, or a PTE Academic overall score of 49 and no less than 38 for Writing. <p>All other evidence is considered on a case-by-case basis.</p>

*You can complete the standard programme in eight months if you include summer school.

Tailored study plans

Example of an **Accelerated Foundation Studies** plan for a student with an offer for a Bachelor of Business:

ACCELERATED	
Trimester One	
■ English 2	■ Accounting
■ Business Studies	■ Mathematics and Statistics

Key:

- Compulsory paper
- Elective paper

Example of a **Standard Foundation Studies** plan for a student with an offer for a Bachelor of Business:

STANDARD	
Trimester One	
■ English 1	■ Study Skills
■ Business Studies	■ Social Sciences
Trimester Two	
■ English 2	■ Accounting
■ Mathematics and Statistics	■ Critical Thought and Expression

Assessment for entry to the University of Waikato

Entry into degree programmes is based on the following achievements:

- no less than a C- grade in any paper*, and
- B- grade or better in each of English 1 and English 2 to satisfy the minimum English language requirement for undergraduate study.

Applicants not satisfying these requirements will be assessed on a case-by-case basis.

*Higher grades required for Bachelor of Engineering (Hons) and Bachelor of Laws (Hons).

The Waikato Pathways College International High Achiever Progression Bursary (up to NZD\$5000) is available to international students who studied Foundation Studies or Certificate of University Preparation.

The Certificate of Attainment in Foundation Studies will be delivered by Study Group NZ Limited on behalf of the University of Waikato.

Please note that additional English language study and/or evidence of a higher level of English language proficiency is required for the Bachelor of Laws (Hons), Bachelor of Social Work, Bachelor of Teaching, and Bachelor of Education.

Please see waikato.ac.nz/study/enrolment/undergraduate-international for more information.

Pathways to our University

International Diploma (Business)

The International Diploma (Business) offered by Waikato Pathways College enables students to progress into year two of the Bachelor of Business at the University of Waikato in a variety of subject areas.

The International Diploma

Combine the first year of the Bachelor of Business with English language development and a comprehensive programme of academic support and development activities. The International Diploma means you waste no time in preparing for your higher education studies in New Zealand.

Successful completion of the International Diploma (Business) provides you with direct entry into year two of the Bachelor of Business at the Waikato Management School, a Triple-Crown accredited Business School.

Why choose the International Diploma (Business)?

- The programme offers direct entry into year two of the Bachelor of Business (BBus) at the Waikato Management School, a Triple-Crown accredited Business School.
- The programme is recognised by all New Zealand universities.
- The Diploma incorporates the first year papers of the Bachelor of Business with English language development, a complete programme of academic support and development activities to ensure international students are well equipped to undertake higher education studies in New Zealand.
- The programme offers flexible intakes, with two points of entry during the year.
- The Diploma is a three trimester course that can be completed in 12 months.
- The courses are taught on the University of Waikato main campus so you have access to all the same services and facilities as degree level students.

Entry requirements:

- 32 credits across three University Entrance approved subjects (or equivalent). Detailed entry requirements can be found on page 30.
- IELTS 5.5 (no individual component under 5.0) or equivalent.*

Required papers

- ENSLA100 - English for Professions
- STMGT101 - Introduction to Management
- ACCTN101 - Accounting for Management
- ECONS101 - Business Economics and the New Zealand Economy
- FINAN101 - Introduction to Finance
- MGSYS101 - Integrated Thinking - Digital Business and Supply Change Management
- MRKTG101 - Fundamentals of Successful Marketing
- DIGIB101 - The World of Digital Business

*For more details visit our website pathways.waikato.ac.nz

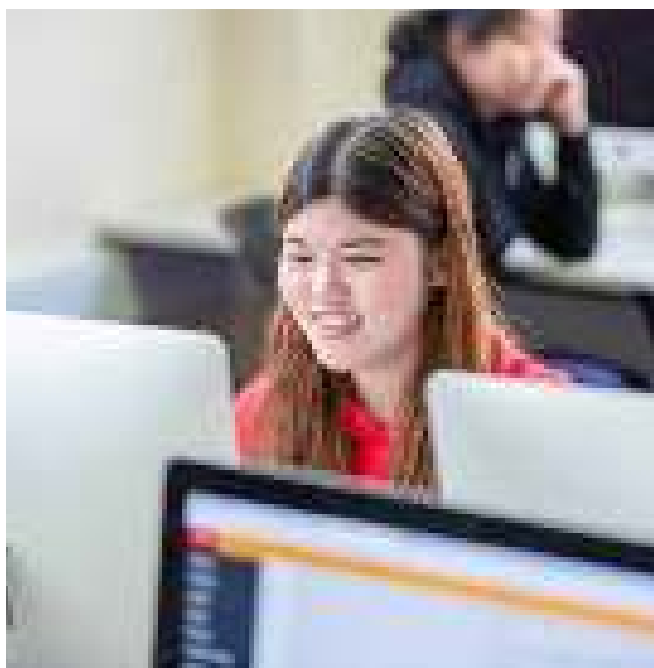


Completion and progression

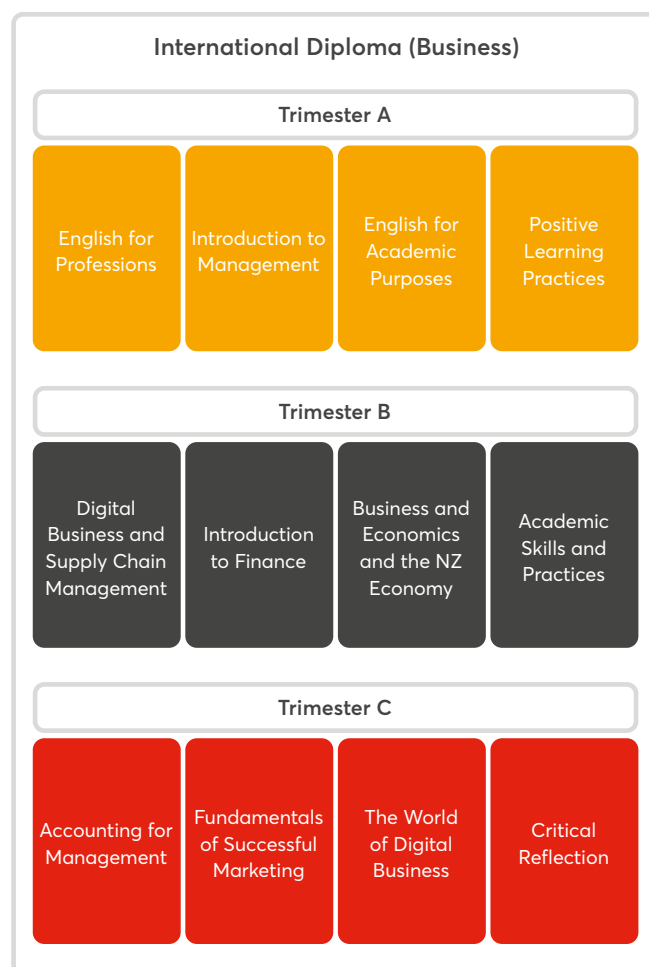
Upon successful completion of all eight papers you will be eligible to graduate with the International Diploma (Business) or transfer into the second year of Bachelor of Business (BBus) at the University of Waikato.

Students transferring into the second year of the BBus will be able to enrol in the following majors:

- Accounting (Tauranga and Hamilton)
- Digital Business (Hamilton)
- Economics (Hamilton)
- Finance (Tauranga and Hamilton)
- Human Resource Management (Hamilton)
- Marketing (Tauranga and Hamilton)
- Public Relations (Hamilton)
- Strategic Management (Tauranga and Hamilton)
- Supply Chain Management (Hamilton)
- Tourism and Hospitality Management (Hamilton)



Degree planner



Pathways to our University

International Diploma (Science)

Studying the International Diploma (Science) at Waikato Pathways College will allow you to progress into year two of a Bachelor of Science at the University of Waikato, majoring in either Applied Computing, Computer Science or Data Analytics.

The International Diploma

The International Diploma combines the first year of the Bachelor of Science with English language development and a comprehensive programme of academic support and development activities, ensuring you are prepared to successfully complete a bachelor degree in New Zealand.

Once you successfully complete the International Diploma (Science), you will go on to study the second year of your chosen major in the Bachelor of Science at the University of Waikato. This means you can complete your bachelor degree within the same time frame as students who gained direct entry to the University.

Why choose the International Diploma (Science)?

- The International Diploma combines the first year of a bachelor degree with English language development and a comprehensive programme of academic support and development activities, ensuring you are prepared to successfully complete your bachelor degree in New Zealand.
- Once you complete the International Diploma, you will go on to study the second year of your Bachelor of Science at the University of Waikato.
- As you progress through the International Diploma and Bachelor of Science you will gain hands-on experience with some of the most up-to-date and high-tech computing facilities and laboratory equipment.
- The International Diploma is taught on the University of Waikato's main campus in Hamilton, so you have access to all the same services and facilities as degree level students.
- The Diploma is a three trimester course that can be completed in 12 months.
- The programme is recognised by all New Zealand universities.

Entry Requirements:

- 32 credits across three University Entrance approved subjects (or equivalent). Detailed country-by-country entry requirements can be found on page 30.
- IELTS 5.5 (no individual component under 5.0) or equivalent.*

Required papers

- ENSLA100 – English for Professions
- CSMAZ170 – Foundation in Computing and Mathematical Sciences
- COMPX101 – Introduction to Programming
- MATHS168 – Preparatory Mathematics
- COMPX161 – Introduction to the Web
- COMPX102 – Object-Oriented Programming
- STATS111 – Statistics for Science
- MATHS135 – Discrete Structures



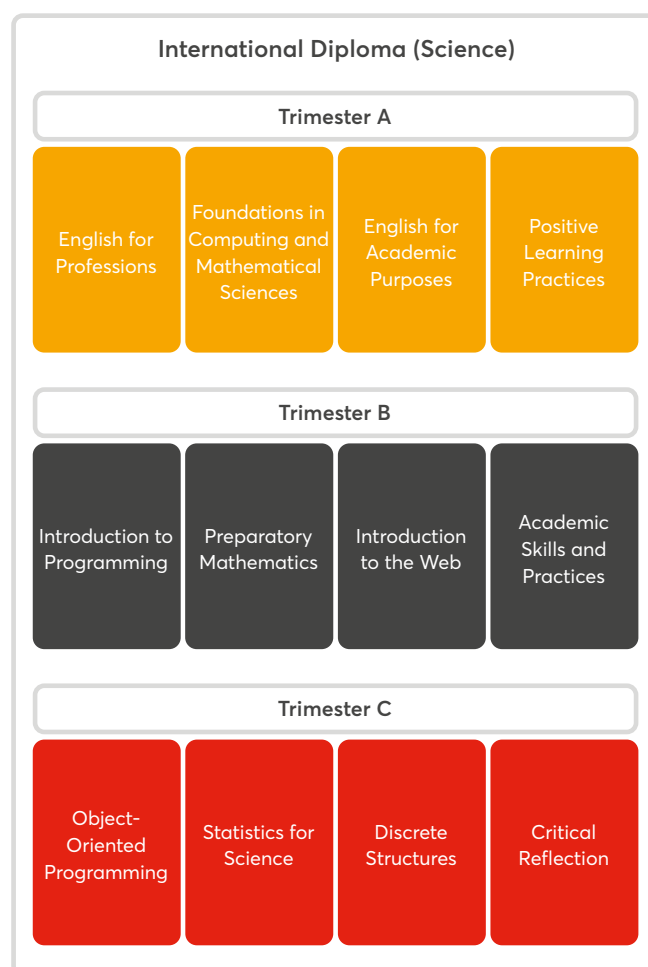
Completion and progression

Upon successful completion of all eight papers, you are eligible to graduate with the International Diploma (Science), or progress into year two of a Bachelor of Science at the University of Waikato, majoring in one of the below:

- **Applied Computing (Hamilton):** You will learn how technologies are integrated to build systems, how to find out what your customers' software needs are, and how to design useful and usable software.
- **Computer Science (Hamilton, Tauranga):** You will be taught about software systems, how people and computers interact, and how to create new software that is easy for people to use.
- **Data Analytics (Hamilton):** You will learn how to enhance productivity and help make more informed decisions, while using your computer science and statistical analysis skills through data analytics.



Degree planner



Pathways to our University

Academic English Language programme

Our English programmes are designed for students who need to improve their English language skills. There are a number of programmes to suit your needs, including preparing you for further academic study or improving your everyday English.

Why choose an English language programme at Waikato Pathways College?

The Academic English Language programme provides direct entry to degree study without the need for further IELTS testing. The General English programme allows you to study as long as you need, with part-time options available. Both English programmes offer flexible intakes, with multiple points of entry during the year.

Our qualified, experienced, and caring teachers foster a supportive and personalised learning environment, with a maximum of 22 students per class, giving you more individualised attention. You will be taught on the University of Waikato main campus where you have the same access to the services and facilities as degree level students.

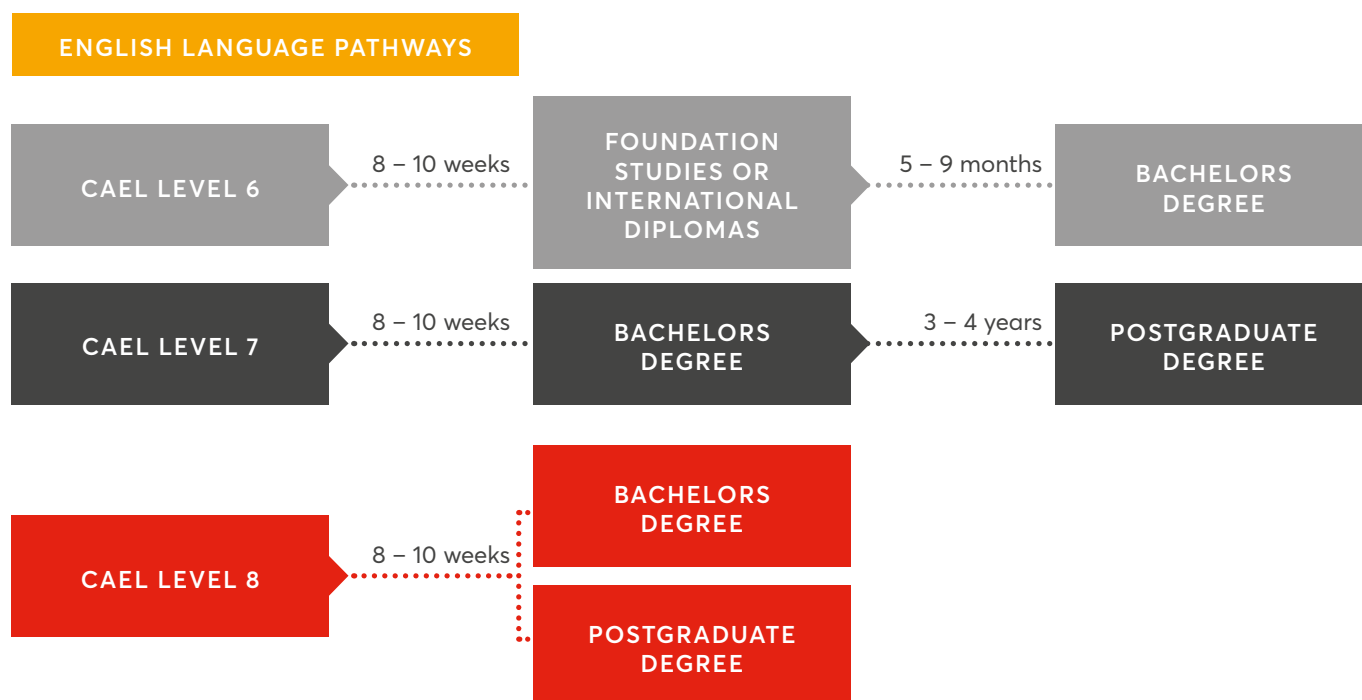
Certificate of Attainment in English Language (CAEL)

The English Language programme focuses on maximising your progress in each of the four core English skills – speaking, writing, reading, and listening. You will also learn study skills to help you learn faster with greater confidence and prepare you for study at the University.

As a full-time student, your core programme will be 23 hours per week.

Successful completion of levels 6, 7 or 8 will provide direct entry to most University programmes.

Detailed entry requirements can be found on page 36.



Upon successful completion

You will receive a University of Waikato certificate and will be included in the University of Waikato graduation ceremony booklet. You will also receive a report, which shows the grade for each of the four language skills and a final grade with a comment noting your overall success.

The Certificate of Attainment in English Language will be delivered by Study Group NZ Limited on behalf of the University of Waikato.

	COURSE NAME	STRUCTURE	THE COURSE WILL TEACH STUDENTS	LENGTH OF COURSE	ENTRY REQUIREMENTS	ENTRY TO UNIVERSITY
LEVEL 1	Certificate of Attainment in English Language (CAEL)	8 levels, from elementary to advanced	Reading, writing, listening, and speaking skills	10-weeks full time per level	You will enter into a level based on your current English proficiency	
LEVEL 2						
LEVEL 3						
LEVEL 4			Academic writing, listening, note-taking, read, and oral presentation skills	Level 4 10-weeks full time	Level 4 IELTS 4.0 (4.0 writing, no band less than 3.5)	
LEVEL 5				Level 5 10-weeks full time	Level 5 IELTS 4.5 (4.5 writing, no band less than 4.0)	
LEVEL 6				Level 6 8 - 10 weeks full time	Level 6 IELTS 5.0 (5.0 writing, no band less than 4.5)	Complete Level 6 Foundation Studies programme
LEVEL 7				Level 7 8 - 10 weeks full time	Level 7 IELTS 5.5 (5.5 writing, no band less than 5.0)	Complete Level 7 Most undergraduate degrees
LEVEL 8				Level 8 8 - 10 weeks full time	Level 8 IELTS 6.0 (6.0 writing, no band less than 5.5)	Complete Level 8 Most postgraduate degrees and some undergraduate degrees, such as Law and Social Work

Additional preparation

General English

General English is a programme designed for students who wish to improve their everyday English and is suitable for students preparing to enter the Academic English Language programme.

Why choose a General English language programme at Waikato Pathways College?

The programme includes core language skills and vocabulary, fluency and accuracy in listening, speaking, reading and writing. The General English course offers an exciting opportunity for people from around the world to learn everyday English in an English-speaking environment. The programme has a general focus suitable for students who need English for everyday contexts or for students preparing to enter the Academic English Language programme.

Classes are offered from elementary to advanced levels, and can be full-time (23 hours per week) or part-time (15 hours per week).

The General English programme will be delivered by Study Group NZ Limited on behalf of the University of Waikato.

Placement test

If you do not provide evidence of an external examination you will sit an English language placement test during the first week to assess your entry level with the option of further testing to move up to higher levels.

Upon completion

You will receive a Waikato Pathways College Certificate of Attendance. Individual graded reports are also available.



English Language Timetable*

	MONDAY	TUESDAY	WEDNESDAY	THURSDAY	FRIDAY**
9.00 am – 12.00 pm	English classes	English classes	English classes	English classes	English classes
12.00 pm – 1.00 pm	Lunch	Lunch	Lunch	Lunch	Lunch
1.00 pm – 3.00 pm	English classes	English classes	English classes	English classes	Sports on Campus (optional - from 2.00 pm)*
	English Club (optional - from 3.15 pm)*	Chess/Table Tennis (optional - from 3.00pm)*	Chess/Table Tennis (optional - from 3.00pm)*	Chess/Table Tennis (optional - from 3.00pm)*	

*Subject to change

** General English and Academic English courses have the same timetable.



"The university is a good place to live. It's not too far from the main city, but it's quieter and not too noisy. It's made me feel more comfortable. All my classmates and my teachers are really kind to me."

– **Frank from China**
Studying Foundation Studies at Waikato
Pathways College

Intakes and fees

Foundation Studies – Certificate of Attainment in Foundation Studies (CAFS)

2020					
APPROXIMATE COST	ORIENTATION	TRIMESTER A	ORIENTATION	TRIMESTER B	TRIMESTER C (SUMMER SCHOOL)
Accelerated \$11,255 Standard \$22,510	24 February 2020	2 March 2020 - 26 June 2020	6 July 2020	13 July 2020 - 6 November 2020	16 November 2020 - 19 February 2021

International Diploma (Business)

2020					
APPROXIMATE COST	ORIENTATION	TRIMESTER A	ORIENTATION	TRIMESTER B	TRIMESTER C (SUMMER SCHOOL)
\$26,000	24 February 2020	2 March 2020 - 16 June 2020	6 July 2020	13 July 2020 - 6 November 2020	N/A

International Diploma (Science)

2020				
APPROXIMATE COST	TRIMESTER A	ORIENTATION	TRIMESTER B	TRIMESTER C (SUMMER SCHOOL)
\$27,500	N/A*	06 July 2020	13 July 2020 - 6 November 2020	N/A

Certificate of Attainment in English Language (CAEL)

2020				
BLOCK 1	INTENSIVE BLOCK *levels 6, 7 and 8 only	BLOCK 2	BLOCK 3	BLOCK 4
10 February 2020 - 24 April 2020	11 May 2020 - 3 July 2020	18 May 2020 - 24 July 2020	10 August 2020 - 16 October 2020	2 November 2020 - 29 January 2021
\$5,200 per block				

General English

Study for a minimum of three weeks to six months. Pay for four weeks and get the fifth week free.

2020					
6, 20 JANUARY	3, 10, 17, 24 FEBRUARY	2, 9, 23, 30 MARCH	20 APRIL	4, 18 MAY	8, 22 JUNE
6, 13, 20, 27 JULY	3, 10, 24 AUGUST	7, 21 SEPTEMBER	5, 19 OCTOBER	2, 16, 30 NOVEMBER	
Full-time (23 hours per week) \$460 per week			Part-time (15 hours per week) \$340 per week		

Note: Courses will be delivered by Study Group NZ Limited on behalf of the University of Waikato.

*Available from March 2021

BRIDAL VEIL FALLS WATERFALL
LOCATED ALONG THE PAKOKA RIVER
IN THE WAIKATO AREA OF NEW ZEALAND.




Academic entry requirements for Waikato Pathways College

Below you will find the academic entry requirements for admission to the Certificate of Attainment in Foundation Studies and the International Diplomas.

COUNTRY	STANDARD FOUNDATION PROGRAMME	ACCELERATED FOUNDATION PROGRAMME	INTERNATIONAL DIPLOMAS
Argentina	Título de Bachiller – grade average of 7.0 (lowest passing grade of 6)	Título de Bachiller – grade average of 8.0 (lowest passing grade of 6)	Título de Bachiller – grade average of 8.0 (lowest passing grade of 6)
Australia	Successful completion of Year 11	70% grade average in Year 11	70% grade average in Year 11
Bangladesh	Higher School Certificate (HSC) with a 50% GPA	Higher School Certificate (HSC) with a 70% GPA	Higher Secondary Certificate (HSC) with a 70% GPA. HSC awarded by Board of Intermediate and Secondary Education or Bangladesh Technical Board (BTEB)
Brazil	Certificado de Ensino Médio – grade average of 6.0 (0-10 scale, lowest passing grade of 5)	Certificado de Ensino Médio – grade average of 7.0 (0-10 scale, lowest passing grade of 5)	Certificado de Ensino Médio – grade average of 7.0 in three academic subjects (0-10 scale, lowest passing grade of 5)
Chile	Licencia de Educación / Enseñanza Media – grade average between 5.0 to 5.6	Licencia de Educación / Enseñanza Media – grade average of 5.7 or higher	Licencia de Educación / Enseñanza Media – grade average of 5.7 or higher Grading scale: 1 - 7 (4 pass)
China	Completion of Senior Year 2; or 60% or above in Senior Year 3	70% or above in Senior Year 2; or 65% or above in Senior Year 3 in four subjects; or Gaokao Tier 2 score (either stream)	70% or above in Senior Year 2 (Gao Er) in four subjects; 65% or above in Senior Year 3 (Gao San) in four subjects; Gaokao Tier 2 score (either stream)
Colombia	Bachiller Académico – grade average of 3.5/5 or 70/100	Bachiller Académico – grade average of 4.0/5 or 80/100	Bachiller Académico – grade average of 80%
Fiji	Fiji School Leaving Certificate – 65% average over four subjects (must include English)	Fiji School Leaving Certificate – 75% average over four subjects (must include English)	Fiji School Leaving Certificate – 75% average over four subjects (must include English)
GAC	GAC Level 2 GPA 2.0	GAC Level 2 GPA 2.6	GAC Level 2 GPA 2.6
Hong Kong	Form 5, pass in three academic subjects	HKDSE – four passes with a minimum of three Level 3 grades	Successful completion of Senior Secondary 2 (HKDSE) with passing grades in four academic subjects; HKDSE Diploma – four passes with a minimum of three Level 3 grades; Passing grades in four relevant IGCSE/O Level academic subjects.
India	All India Senior School Certificate (AISSC) 50%; Higher Secondary School Examination 50%; Indian School Certificate (ISC) 45%	All India Senior School Certificate (AISSC) 65%; Higher Secondary School Examination 65%; Indian School Certificate (ISC) 60%	All India Senior School Certificate (AISSC) 65%; Higher Secondary School Examination 65%; Indian School Certificate (ISC) 60%
Indonesia	SMA 2 - (Year 11) GPA 7 in 4 academic subjects	SMA 2 - (Year 11) GPA 8 in 4 academic subjects	SMU2 (Year 11) with average of 8.0 in four academic subjects or completion (pass in all academic subjects) of SMU III (Year 12)
International qualifications - including United Kingdom	IGCSE / O-Levels with C grade average in four relevant academic subjects, or equivalent. International Baccalaureate – 18 points in six subjects	IGCSE / O-Levels with B grade averages in four relevant academic subjects, or equivalent. International Baccalaureate – 20 points in six subjects	IGCSE / O Levels – B grade averages in four relevant academic subjects, or equivalent; International Baccalaureate – 20 points in six subjects
Iran	Year 11 with 16 out of 20 in academic subjects	Year 11 with 18 out of 20 in academic subjects	Year 11 with 18 out of 20 in academic subjects

COUNTRY	STANDARD FOUNDATION PROGRAMME	ACCELERATED FOUNDATION PROGRAMME	INTERNATIONAL DIPLOMAS
Japan	Kotogakko / Senior High School Year 2 – minimum of 60% in academic subjects (grade 2- 3 on a scale of 1-5); or successful completion of Senior High School Year 3	Kotogakko / Senior High School Year 2 – minimum of 70% in academic subjects (grade 4 on a scale of 1-5); or Senior High School Year 3 – minimum of 60% in academic subjects (grade 3 on a scale of 1-5)	Kotogakko / Senior High School Year 2 – minimum of 70% in academic subjects (grade 4 on a scale of 1-5); Senior High School Year 3 – minimum of 60% in academic subjects (grade 3 on a scale of 1-5)
Kenya	KCSE with 2 C grades and 2 D grades in relevant subjects	KCSE C grades in 4 relevant subjects	KCSE C grades in four relevant subjects
Korea	High School Year 2 - Rank 3-4	High School Year 2 - Rank 1-2	Year 11 – High School Certificate: 70% Year 12 – High School Certificate: 60%
Kuwait	Shahadat-al-thanawia-al-a'ama / General Secondary School Certificate with pass	Shahadat-al-thanawia-al-a'ama / General Secondary School Certificate with 75% average in academic subjects	Shahadat-al-thanawia-al-a'ama / General Secondary School Certificate with 75% average in academic subjects
Macau	Form 5 / Senior Middle 2 - 65% in academic subjects	Form 5 / Senior Middle 2 - 75% in academic subjects	Form 5 / Senior Middle 2 – 75% in four academic subjects
Malaysia	SPM – minimum four passes (Grade C) in four subjects (forecasted results accepted); or UEC – minimum Grade C7 in four subjects (forecasted results accepted)	SPM – Grade B average in four subjects (forecasted results accepted); or UEC – Grade B4 average in four subjects (forecasted results accepted); or STPM – at least one C grade	SPM – total score of 20 in four best academic subjects (forecasted results accepted); Grading scale from 2009 onwards: A+ = 9, A = 8, A- = 7, B+ = 6, B = 5, C+ = 4, C = 3, D = 2, E = 1, G = 0 UEC – minimum four passes in academic subjects (forecasted results accepted); STPM – passes in two academic subjects; Grading scale: A = 7, A- = 6, B+ = 5, B = 4, B- = 3, C+ = 2, C = 1, with partial passes C-, D+ and D = 0
Mexico	Bachillerato General – grade average of 7.0 (lowest passing grade of 6)	Bachillerato General – grade average of 7.5 (lowest passing grade of 6)	Bachillerato General – grade average of 7.5 (lowest passing grade of 6)
Myanmar	Successful completion of the Basic Education High School Examination / Matriculation Examination	Successful completion of the Basic Education High School Examination / Matriculation Examination with 75% overall	Successful completion of the Basic Education High School Examination / Matriculation Examination with 75% overall
Nepal	Higher Secondary School Leaving Certificate (Year 11) with a grade average of 50%	Higher Secondary School Leaving Certificate (Year 11) with a grade average of 60%	Higher Secondary School Leaving Certificate (Year 11) with a grade average of 60%
New Zealand (international students)	40 credits at NCEA level 2 with no fewer than 12 credits in each of three university approved subjects, plus numeracy and literacy	NCEA level 2 certificate with no fewer than 12 credits in each of three university approved subjects, plus numeracy and literacy. Student must achieve 60 credits at Level 2 or above + 20 credits from any level,. Level 1 literacy and numeracy requirements must also be met	The equivalent of 32 credits across three University Entrance approved subjects
Nigeria	West African School Certificate / NECO – grade C6 or higher in five academic subjects	West African School Certificate / NECO – grade C4 or higher in five academic subjects	SSCE (WAEC/NECO) – grade C4 or higher in five academic subjects
Oman	General Education Diploma with a 60% average	General Education Diploma with a 70% average	General Education Diploma with a 70% average
Pakistan	Intermediate / Higher Secondary School certificate – average of 50% (Second Division) in academic subjects	Intermediate / Higher Secondary School certificate – average of 60% (First Division) in academic subjects	Intermediate / Higher Secondary School certificate – average of 60% (First Division) in academic subjects
Peru	Certificado de Educación Secundaria Común Completa – grade average of 14	Certificado de Educación Secundaria Común Completa – grade average of 16	Certificado de Educación Secundaria Común Completa – grade average of 16
Philippines	Year 11 - C grade average (to reflect new K - 12 system)	Year 11 - B grade average (to reflect new K - 12 system) Year 12 - C grade average (to reflect new K - 12 system)	Year 11 – B grade average (to reflect new K - 12 system); Year 12 – C grade average (to reflect new K - 12 system)

COUNTRY	STANDARD FOUNDATION PROGRAMME	ACCELERATED FOUNDATION PROGRAMME	INTERNATIONAL DIPLOMAS
Russia	Attestat o Srednem Obrazovanii (Certificate of Secondary Education) – minimum of grade 3 in five subjects (compulsory and optional subjects)	Attestat o Srednem Obrazovanii (Certificate of Secondary Education) – minimum of grade 3 in three subjects (optional subjects) and a minimum of grade 4 in two subjects (compulsory subjects)	Attestat o Srednem Obrazovanii (Certificate of Secondary Education) – minimum of grade 3 in three subjects (optional subjects) and a minimum of grade 4 in two subjects (compulsory subjects)
Samoa	School Certificate or SPFSC – 65% Average	School Certificate or SPFSC – 75% Average	School Certificate or SPFSC – 75% average
Saudi Arabia	Tawjihiyah / General Secondary Education Certificate with 60% average in academic subjects	Tawjihiyah / General Secondary Education Certificate with 75% average in academic subjects	Tawjihiyah / General Secondary Education Certificate with 75% average in academic subjects
Singapore	Singapore / Cambridge O Levels – minimum C6 grade in four subjects (forecasted results accepted)	Singapore / Cambridge O Levels – minimum B4 grade in four subjects (forecasted results accepted); or attempted Singapore/Cambridge GCE A Levels with at least one H2 pass at C grade	Singapore / Cambridge O Levels – minimum B4 grade in four subjects (forecasted results accepted; independent and school-assessed O Levels are not sufficient); Singapore/Cambridge GCE A Levels with at least one H2 pass at C grade
Sri Lanka	Sri Lankan / Cambridge O Levels – C grade average in four subjects (forecasted results accepted)	Sri Lankan / Cambridge O Levels – Grade B average in four subjects (forecasted results accepted)	Sri Lankan / Cambridge O Levels – B grade average in four subjects (forecasted results accepted; independent and school-assessed O Levels are not sufficient).
Taiwan	70% or above in Senior Year 2; or 65% or above in Senior Year 3	80% or above in Senior Year 2; or 75% or above in Senior Year 3	80% or above in Senior Year 2; or 75% or above in Senior Year 3 (independent and school-assessed O Levels are not sufficient).
Thailand	Matayom 5 (M5), GPA 2.5	Matayom 5 (M5), GPA 3.0	Matayom 5 (M5) – GPA 3.0 Matayom 6 (M6) – GPA 2.0
Turkey	State or Private High School Diploma or the Lise Bitirme Diplomasi or Devlet Lise Diplomasi – 2.5 out of 5 (50%)	State or Private High School Diploma or the Lise Bitirme Diplomasi or Devlet Lise Diplomasi – 3.5 out of 5 (70%)	State or Private High School Diploma or the Lise Bitirme Diplomasi or Devlet Lise Diplomasi – 3.5 out of 5 (70%)
UAE	Tawjihiya / General Secondary School Education Certificate with 65% average in academic subjects	Tawjihiya / General Secondary School Education Certificate with 75% average in academic subjects	Tawjihiya / General Secondary School Education Certificate with 75% average in academic subjects or US High School Diploma
Vietnam	Year 11, GPA 7.0	Year 11, GPA 8.0	Year 11 – GPA 8.0



"Waikato Pathways College is giving us the fundamental knowledge to excel in our future degree studies. It's a preparation for our careers."

- Maryam from Oman

Studying the Foundation Studies programme at Waikato Pathways College



Progress from Foundation Studies to your chosen degree

Subjects (Papers)

FOUND021

- English for Foundation 1

FOUND022

- English for Foundation 2

FOUND011

- Bridging Physics

FOUND007

- Bridging Calculus

FOUND010

- Bridging Chemistry

Below you will find the academic entry requirements to progress from Certificate of Attainment in Foundation Studies to your chosen degree at the University of Waikato.

DEGREE PROGRAMMES	ENTRY REQUIREMENTS FROM WAIKATO PATHWAYS COLLEGE
Bachelor of Arts (BA)	Completion of the Certificate of Attainment in Foundation Studies with no less than a C- grade in any subject, and a B- grade or better in each of FOUND021 and FOUND022
Bachelor of Business (BBus)	Completion of the Certificate of Attainment in Foundation Studies with no less than a C grade in any subject, and a B- grade or better in each of FOUND021 and FOUND022
Bachelor of Communication Studies (BCS)	Completion of the Certificate of Attainment in Foundation Studies with no less than a C grade in any subject, and a B- grade or better in each of FOUND021 and FOUND022
Bachelor of Computing and Mathematical Sciences with Honours (BCMS(Hons))	Completion of the Certificate of Attainment in Foundation Studies with no less than a C grade in any subject, and a B- grade or better in each of FOUND021 and FOUND022
Bachelor of Design (BDes)	Completion of the Certificate of Attainment in Foundation Studies with no less than a C grade in any subject, and a B- grade or better in each of FOUND021 and FOUND022
Bachelor of Engineering with Honours (BE(Hons))	Completion of the Certificate of University Preparation with an overall B- grade average, a B- grade or better in FOUND011, FOUND007, and at least a C grade in every other subject
Bachelor of Engineering with Honours (BE(Hons)) (Chemical & Biological, Materials & Process and Environmental)	Completion of the Certificate of Attainment in Foundation Studies with an overall B- grade average, a B- grade or better in FOUND011, FOUND007, FOUND010, FOUND021, FOUND022 and at least a C grade in every other subject
Bachelor of Engineering with Honours (BE(Hons)) (Electronic, Mechanical and Civil Engineering)	Completion of the Certificate of Attainment in Foundation Studies with an overall B- grade average, a B- grade or better in FOUND011, FOUND007, FOUND021, FOUND022 and at least a C grade in every other subject
Bachelor of Engineering with Honours (BE(Hons)) (Software Engineering)	Completion of the Certificate of Attainment in Foundation Studies with an overall B- grade average, a B- grade or better in FOUND007, FOUND021, FOUND022 and at least a C grade in every other subject

DEGREE PROGRAMMES	ENTRY REQUIREMENTS FROM WAIKATO PATHWAYS COLLEGE
Bachelor of Environmental Planning (BEP)	Completion of the Certificate of Attainment in Foundation Studies with no less than a C grade in any subject, and a B- grade or better in each of FOUND021 and FOUND022
Bachelor of Health	The Certificate of Attainment in Foundation Studies - no less than a C- grade in any subject plus a B- grade or better in two English subjects.
Bachelor of Health, Sport and Human Performance (BHSHP)	Completion of the Certificate of Attainment in Foundation Studies with no less than a C grade in any subject, and a B- grade or better in each of FOUND021 and FOUND022
Bachelor of Laws (LLB)	Completion of the Certificate of Attainment in Foundation Studies with an overall B- grade average, a B- grade or better in FOUND001
Bachelor of Management Studies with Honours (BMS(Hons))	Completion of the Certificate of Attainment in Foundation Studies with no less than a C grade in any subject, and a B- grade or better in each of FOUND021 and FOUND022
Bachelor of Music (BMus)	<p>At least 20 credits in NCEA at Level 2 in Music, or at least 14 credits in NCEA at Level 3 in Music, or a Grade 3 Theory pass or better in the New Zealand Music Education Board, or Australian Music Education Board, or a Grade 5 Theory pass or better in the Trinity College or Royal College of Music examinations, or a music qualification assessed as equivalent.</p> <p>Completion of the Certificate of Attainment in Foundation Studies with no less than a C grade in any subject, and a B- grade or better in FOUND021 and FOUND022.</p> <p>Entry to the Performance stream will, in addition to the above criteria, require successful completion of an audition.</p>
Bachelor of Science (BSc) in the Faculty of Computing and Mathematical Sciences	Completion of the Certificate of Attainment in Foundation Studies with no less than a C grade in any subject, and a B- grade or better in each of FOUND021 and FOUND022
Bachelor of Science (BSc) in the Faculty of Science and Engineering	Completion of the Certificate of Attainment in Foundation Studies with no less than a C grade in any subject, and a B- grade or better in each of FOUND021 and FOUND022
Bachelor of Science (Technology) (BSc(Tech))	Completion of the Certificate of Attainment in Foundation Studies with no less than a C grade in any subject, and a B- grade or better in each of FOUND021 and FOUND022
Bachelor of Social Sciences (BSocSc)	Completion of the Certificate of Attainment in Foundation Studies with no less than a C grade in any subject, and a B- grade or better in each of FOUND021 and FOUND022
Bachelor of Social Work (BSW)	<p>All applicants are subject to an interview and selection process, including a criminal record check, provision of a personal statement and referee check.</p> <p>Selection of applicants is based on academic background, suitability for social work and meeting the requirements of the University and the New Zealand Social Workers Registration Board in terms of being a fit and proper person to practice social work. Applicants will be interviewed by the Bachelor of Social Work selection panel.</p> <p>Completion of the Certificate of Attainment in Foundation Studies with no less than a C grade in any subject, and a B- grade or better in each of FOUND021 and FOUND022.</p>

Progress from Academic English Language programme to your chosen degree

Below you will find the academic entry requirements to progress from Certificate of Attainment in English Language to your chosen degree at the University of Waikato.

DEGREE PROGRAMMES	ENTRY REQUIREMENTS FROM WAIKATO PATHWAYS COLLEGE
Bachelor of Arts (BA)	A B grade or better at Level 7 in the Certificate of Attainment in English Language
Bachelor of Business (BBus)	A B grade or better at Level 7 in the Certificate of Attainment in English Language
Bachelor of Business Analysis (BBA)	A B grade or better at Level 7 in the Certificate of Attainment in English Language
Bachelor of Communication Studies (BCS)	A B grade or better at Level 7 in the Certificate of Attainment in English Language
Bachelor of Computing and Mathematical Sciences with Honours (BCMS(Hons))	A B grade or better at Level 7 in the Certificate of Attainment in English Language
Bachelor of Design (BDes)	A B grade or better at Level 7 in the Certificate of Attainment in English Language
Bachelor of Education (BEd)	No completion standard specified. University of Waikato Calendar states: "All other evidence is considered on a case by case basis"
Bachelor of Engineering with Honours (BE(Hons))	A B grade or better at Level 7 in the Certificate of Attainment in English Language
Bachelor of Environmental Planning (BEP)	A B grade or better at Level 7 in the Certificate of Attainment in English Language
Bachelor of Health, Sport and Human Performance (BHSHP)	A B grade or better at Level 7 in the Certificate of Attainment in English Language-
Bachelor of Laws (LLB)	A B grade or better at Level 8 in the Certificate of Attainment in English Language
Bachelor of Management Studies with Honours (BMS(Hons))	A B grade or better at Level 7 in the Certificate of Attainment in English Language
Bachelor of Music (BMus)	A B grade or better at Level 7 in the Certificate of Attainment in English Language
Bachelor of Science (BSc) in the Faculty of Computing and Mathematical Sciences	A B grade or better at Level 7 in the Certificate of Attainment in English Language

DEGREE PROGRAMMES	ENTRY REQUIREMENTS FROM WAIKATO PATHWAYS COLLEGE
Bachelor of Science (BSc) in the Faculty of Science and Engineering	A B grade or better at Level 7 in the Certificate of Attainment in English Language
Bachelor of Science (Technology) (BSc(Tech))	A B grade or better at Level 7 in the Certificate of Attainment in English Language
Bachelor of Social Sciences (BSocSc)	A B grade or better at Level 7 in the Certificate of Attainment in English Language
Bachelor of Social Work (BSW)	A B grade or better at Level 8 in the Certificate of Attainment in English Language
Bachelor of Teaching (BTchg)	No completion standard specified. University of Waikato Calendar states: "All other evidence is considered on a case by case basis"
Master of Teaching and Learning (MTchgLn)	No completion standard specified. University of Waikato Calendar states: "All other evidence is considered on a case by case basis"
Postgraduate degrees	Successful completion of Level 8 with a B grade average in the Certificate of Attainment in English Language



How to apply

To apply direct

Visit: pathways.waikato.ac.nz
AND

Complete the application form and return it to the Admissions Centre, along with the supporting documents outlined in step two.

Admissions Centre

T +61 2 8263 1888

F +61 2 9267 0531

E pathwaysadmissions@waikato.ac.nz

To apply through an agent

Complete the application form and return it to your local representative, along with the supporting documents outlined in step two.

Refund

Information about how to accept an offer and pay fees, refunds and administration charges is available at pathways.waikato.ac.nz/terms-and-conditions

Living cost

Full fee paying overseas students must have funds and prepare evidence to be submitted to the Immigration New Zealand that they have at least NZ \$15,000 for a full year of study or NZ \$1,250 per month to stay in New Zealand. More information can be found at studyinnewzealand.govt.nz/live-work/cost-of-living/



Step 1

Complete all sections of the international application for admission form.



Step 2

Attach the following documents:

- Certified copies of your academic qualifications (original and translated into English)
- Evidence of English language proficiency
- A copy of your passport, visa or birth certificate.
- Under 18 accommodation form (if required)

For information on student visas to New Zealand, please go to the Immigration New Zealand website immigration.govt.nz



Step 3

Submit your application to our Admissions Centre by email or locally through an authorised education agent.



Step 4

Your application will be reviewed for eligibility and you will be notified in writing of the outcome.

Find more helpful information online

Detailed programme information

pathways.waikato.ac.nz

Detailed programme information including academic and English requirements for entry into courses, and tuition fees.

How to apply directly to Waikato Pathways College

pathways.waikato.ac.nz

Arranging your visa, health cover, and arrival

waikato.ac.nz/study/international/preparing-to-come-to-nz

Accommodation options

waikato.ac.nz/student-life/accommodation

A variety of accommodation options are available to suit your individual lifestyle and budget.

Important information for international students

Code of Practice: The University of Waikato has agreed to observe and be bound by the Education (Pastoral Care of International Students) Code of Practice 2016. Copies of the Code are available from nzqa.govt.nz/studying-in-new-zealand. For further information on studying at Waikato as an international student, please visit waikato.ac.nz/students/international

Immigration: Full details of immigration requirements, advice on rights to employment in New Zealand while studying, and reporting requirements are available from Immigration New Zealand. Please visit immigration.govt.nz

Eligibility for Health Services: Most international students are not entitled to publicly funded health services while in New Zealand.

If you receive medical treatment during your visit, you may be liable for the full costs of that treatment. Full details on entitlements to publicly funded health services are available through the Ministry of Health, and can be viewed on their website at moh.govt.nz

Complaints procedure for international students:

The University of Waikato is committed to ensuring you have a positive experience while you study with us. If at any time you have a problem with your experience at the University of Waikato, you can make a formal complaint. For more information, please visit pathways.waikato.ac.nz/student-complaints

Accident Insurance: The Accident Compensation Corporation (ACC) provides accident insurance for all New Zealand citizens, residents and temporary visitors to New Zealand, but you may still be liable for all other medical and related costs. Further information can be found on the ACC website acc.co.nz

Medical and Travel Insurance: International students (including group students) must have appropriate and current medical and travel insurance while in New Zealand. For information on the medical and travel insurance policies the University of Waikato will accept, please visit waikato.ac.nz/students/international/insurance

International Student Contract Dispute Resolution

Scheme (DRS): The University of Waikato is committed to fully complying with the DRS rules. For more information, please visit istudent.org.nz

ADDITIONAL COSTS 2020

Student Services Levy	up to \$750 per year*
Application Fee – payable once for each new enrolment	\$220.00
Homestay Administration Fee – payable once on each new application	\$330.00
Homestay – 3 meals per day	\$266.00 per week
Auckland International Airport – shuttle transfer	\$90.00 one way
Travel and Medical Insurance	premiums start from \$100.00
Under 18 Designated Caregiver Assessment Fee	\$200.00

All prices are correct at the time of printing and apply from 1 January 2020. Fees and charges are subject to change. For a full list of the University of Waikato's fees and costs, see waikato.ac.nz/study/costs. *Fees are subject to change.

Get in Touch



+61 2 8263 1888



pathwaysqueries@waikato.ac.nz



pathways.waikato.ac.nz

Follow



UniversityofWaikato



@WaikatoInternational



@WaikatoPathwaysCollege



THE UNIVERSITY OF
WAIKATO
Te Whare Wānanga o Waikato
NEW ZEALAND

WHERE THE WORLD IS GOING
TE AHUNGA O TE AO



The University of Waikato
Private Bag 3105
Hamilton 3240
New Zealand

Phone: +61 2 8263 1888 (International)
Email: pathwaysqueries@waikato.ac.nz
Website: pathways.waikato.ac.nz
Facebook: [waikatopathwayscollege](https://www.facebook.com/waikatopathwayscollege)

