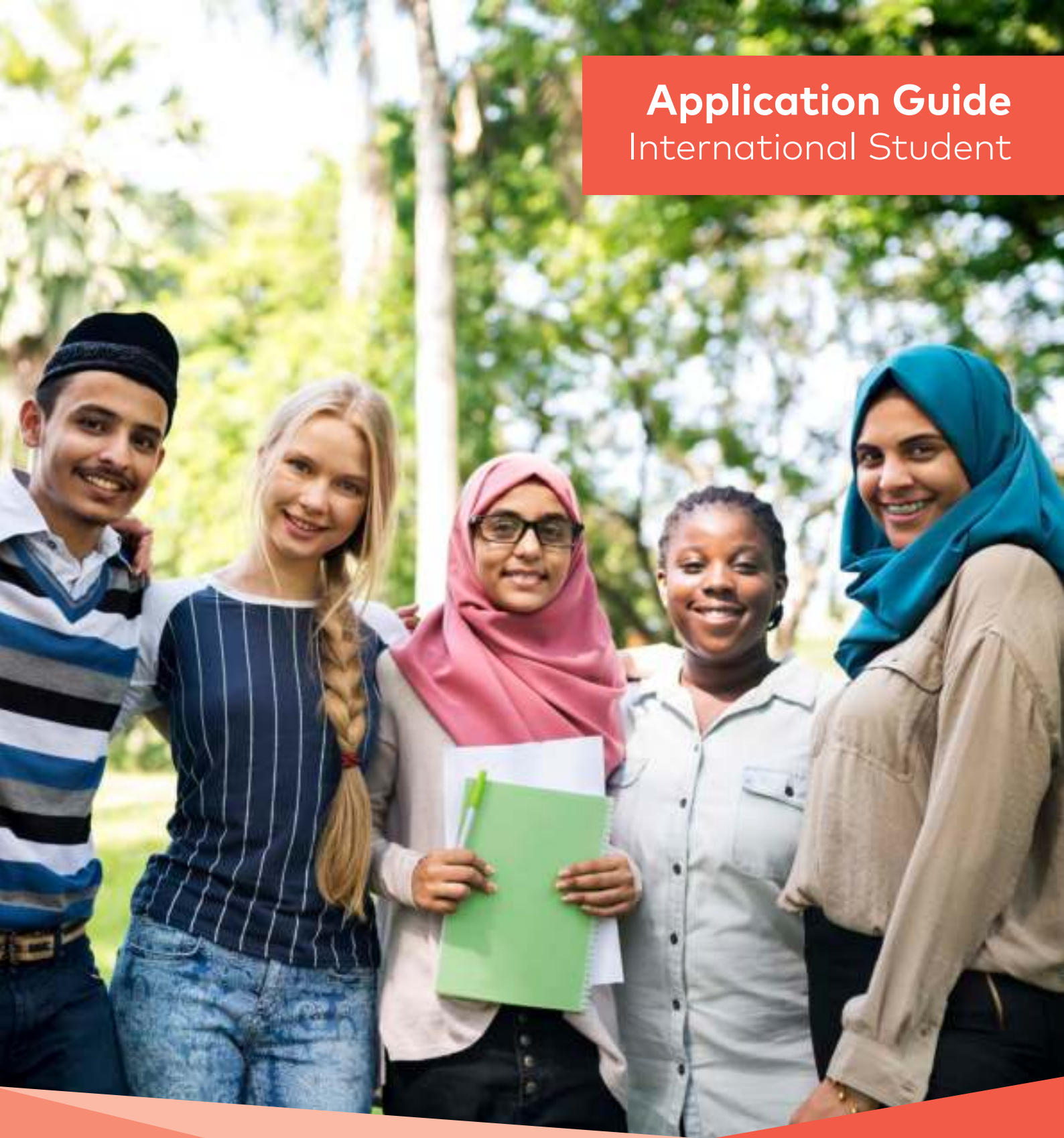


Application Guide

International Student



Study in
New Zealand

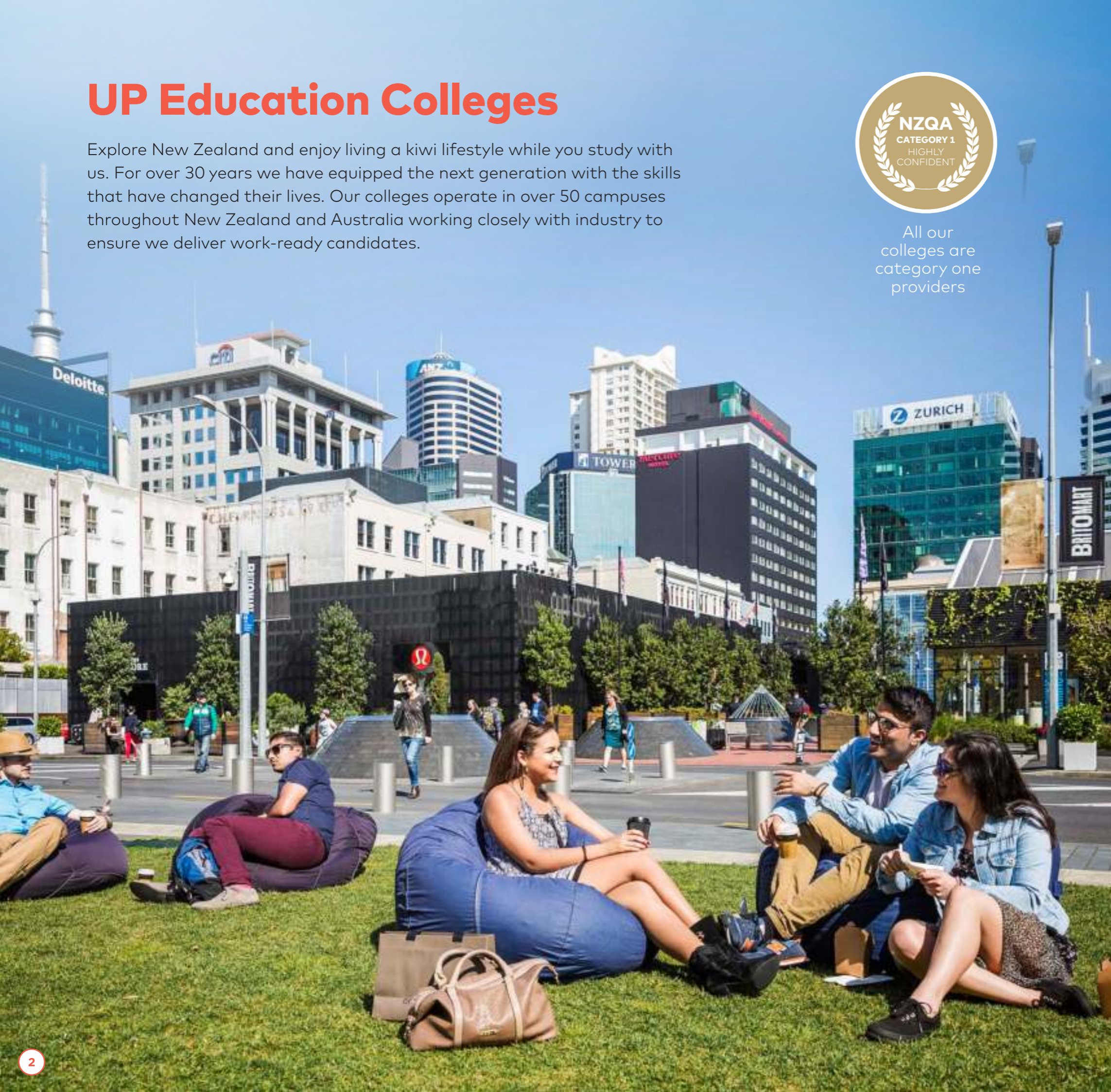


UP Education Colleges

Explore New Zealand and enjoy living a kiwi lifestyle while you study with us. For over 30 years we have equipped the next generation with the skills that have changed their lives. Our colleges operate in over 50 campuses throughout New Zealand and Australia working closely with industry to ensure we deliver work-ready candidates.



All our colleges are category one providers



New Zealand's brand new cooking and hospitality school. Growing the next generation of chefs, bartenders, baristas and hospitality leaders.



Study with NZST and get into incredible internships during your study, resulting in an exciting career in the travel and tourism industry.



New Zealand's largest specialist creative and IT college produces graduates in animation, film, emerging technologies, game development, graphic design and more.



Study with NZMA to get a career in cooking and hospitality, business, pharmacy or childhood education.



Focused on human performance and sport management - we prepare our graduates for a career in the world of sport, recreation and exercise.



Modern massage therapy and wellness industries are growing rapidly. Our programmes cover the skills and knowledge for a diverse career within the industry.



Barbering, Hair, make up and SFX make up. Graduates get into fun, creative careers within the beauty industry.



We are the largest provider of Beauty and Spa therapy training in New Zealand.

We Offer

Throughout New Zealand and Australia we offer specialist English language courses, university entrance pathways, and a range of bachelor degrees, diplomas and certificates across a broad range of vocational careers. We have long-term partnerships in place with globally respected universities, including: University of Auckland, Victoria University of Wellington, AUT Auckland, and University of Tasmania.

An exceptional learning community



80%

of our vocational graduates go onto higher study or into employment

12,000

students from New Zealand and across the world

8,000

students successfully achieved university entrance



Programme options	NZQA level	IELTS requirements	Weeks (excluding holidays)	Tuition fee (NZD)	Resources fee (NZD)
New Zealand Certificate in Cookery with Internship	4	5.5 (no band less than 5.0)	36	19,500	2,500
Certificate in Baking (Generalist) with Internship	4	5.5 (no band less than 5.0)	10	19,500	2,500
New Zealand Diploma in Cookery (Advanced) with Internship - Cookery	5	5.5 (no band less than 5.0)	26	12,150	1,500
New Zealand Diploma in Cookery (Advanced) with Internship - Patisserie	5	5.5 (no band less than 5.0)	17	12,150	1,500
New Zealand Diploma in Hospitality Management	5	5.5 (no band less than 5.0)	49	19,500	2,500
New Zealand Diploma in Hospitality Management	6	6.0 (no band less than 5.5)	47	12,150	1,500

*Intake Dates**
Jan - Nov 2020



Auckland City
Auckland Mt Wellington
Hamilton

Programme options	NZQA level	IELTS requirements	Weeks (excluding holidays)	Tuition fee (NZD)	Resources fee (NZD)
Tourism, Travel & Airline Industry	3	5.0 (no band less than 5.0)	22	12,600	850
Tourism, Hotels & Resorts	4	5.5 (no band less than 5.0)	16	8,500	700
Tourism, Hotel & Airline Operations	4	5.5 (no band less than 5.0)	16	8,500	700
Tourism, Airline & Flight Attending	4	5.5 (no band less than 5.0)	16	8,500	700
Tourism, Airline & Flight Attending (including Flight Attending Practicals)	4	5.5 (no band less than 5.0)	16	8,100	700
Diploma in Tourism & Travel Management	5	5.5 (no band less than 5.0)	32	19,500	1,250
Diploma in Hotel & Hospitality Management	5	5.5 (no band less than 5.0)	32	19,500	1,250
Travel & Tourism Management Diploma (2 Year)	5	5.5 (no band less than 5.0)	64 (2 x 1 year)	29,900 or Year 1: 20,900 Year 2: 11,095	1,250 or Year 1: 850 Year 2: 750
Diploma in Tourism & Travel	6	6.0 (no band less than 5.5)	32	19,500	1,250
Diploma in Hotel & Hospitality Management	6	6.0 (no band less than 5.5)	32	19,500	1,250

*Intake Dates**
Jan - Nov 2020



Auckland City
Auckland Airport
Hamilton
Rotorua
Wellington
Christchurch
Dunedin



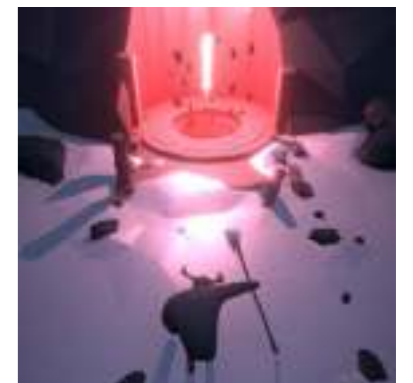


Programme options	NZQA level	IELTS requirements	Weeks (excluding holidays)	Tuition fee (NZD)	Resources fee (NZD)
Certificate in Creative Media	4	5.5 (no band less than 5.0)	19	\$10,000	\$850
Certificate in Fashion	4	5.5 (no band less than 5.0)	18	\$8,000	\$850
Certificate in Makeup Artistry	4	5.5 (no band less than 5.0)	40	\$19,500	\$2,000
Diploma in Fashion	5	5.5 (no band less than 5.0)	36	\$19,500	\$2,000
Diploma in Digital Design (Web & Graphic Design)	5	5.5 (no band less than 5.0)	40	\$19,500	\$2,000
Diploma in Digital Design (Animation & Film Production)	5	5.5 (no band less than 5.0)	40	\$19,500	\$2,000
Diploma in Animation	5	5.5 (no band less than 5.0)	32	\$19,500	\$2,000
Certificate in Information Technology & Client Support	5	5.5 (no band less than 5.0)	16	\$6,500	\$750
Certificate in SQL Server Administration & Development	5	5.5 (no band less than 5.0)	16	\$6,500	\$750
Diploma in Web & Application Development	5	5.5 (no band less than 5.0)	32	\$19,500	\$2,000
Diploma in Web & Application Development	5	5.5 (no band less than 5.0)	32	\$19,500	\$2,000
New Zealand Diploma in Screen Production	5	5.5 (no band less than 5.0)	40	\$19,500	\$2,000
On Screen Acting	5	5.5 (no band less than 5.0)	40	\$19,500	\$2,000
Diploma in Creative Digital Design	6	6.0 (no band less than 5.5)	40	\$19,500	\$2,000
Diploma in Web & UX Design	6	6.0 (no band less than 5.5)	40	\$19,500	\$2,000

*Intake Dates**
Jan - Nov 2020



Programme options	NZQA level	IELTS requirements	Weeks (excluding holidays)	Tuition fee (NZD)	Resources fee (NZD)
Diploma in 3D Production	6	6.0 (no band less than 5.5)	40	\$19,500	\$2,000
Diploma in Screen Production	6	6.0 (no band less than 5.5)	40	\$19,500	\$2,000
Diploma in Game Art & Development – Year 1	6	6.0 (no band less than 5.5)	37	\$19,500	\$2,000
Diploma in Specialised Animation	6	6.0 (no band less than 5.5)	32	\$19,500	\$2,000
Diploma in Networking	6	6.0 (no band less than 5.5)	32	\$19,500	\$2,000
Diploma in Game Art & Development – Year 2	7	6.0 (no band less than 5.5)	37	\$19,500	\$2,000
Diploma in Advanced 3D Production	7	6.0 (no band less than 5.5)	40	\$19,000	\$2,000
Diploma in Digital Media (Advanced)	7	6.0 (no band less than 5.5)	32	\$19,000	\$2,000
Bachelor of Animation with majors in Story & Character; World Building & Visual Effects; Interactive Media & Games	7	6.0 (no band less than 5.5)	3 years	\$57,000 or Year 1: \$19,950 Year 2: \$19,950 Year 3: \$19,950	\$7,500 or Year 1: \$2,500 Year 2: \$2,500 Year 3: \$2,500
Bachelor of Creative Software	7	6.0 (no band less than 5.5)	96	\$57,000 or Year 1: \$19,950 Year 2: \$19,950 Year 3: \$19,950	\$7,500 or Year 1: \$2,500 Year 2: \$2,500 Year 3: \$2,500





NEW ZEALAND
INSTITUTE OF SPORT



Programme options	NZQA level	IELTS requirements	Weeks (excluding holidays)	Tuition fee (NZD)	Resources fee (NZD)
NZ Certificate in Pharmacy Technician (2 year)	5	5.5 (no band less than 5.0)	72 + 12	28,000	1,000
Diploma in Applied Management	7	6.0 (no band less than 5.5)	40	20,500	500

Intake Dates*
Jan - Nov 2020



Programme options	NZQA level	IELTS requirements	Weeks (excluding holidays)	Tuition fee (NZD)	Resources fee (NZD)
Health & Fitness Personal Trainer	4	5.5 (no band less than 5.0)	20	10,500	1,000
New Zealand Diploma in Sport, Recreation, & Performance (Multi-Sector)	5	5.5 (no band less than 5.0)	40	19,500	1,250
New Zealand Diploma in Sport, Recreation, & Exercise (Multi-Sector)	6	6.0 (no band less than 5.5)	40	19,500	1,250
New Zealand Diploma in Sports Management (Multi-Sector)	6	6.0 (no band less than 5.5)	40	19,500	1,250

Intake Dates*
Jan - Nov 2020



NEW ZEALAND
COLLEGE of MASSAGE



Programme options	NZQA level	IELTS requirements	Weeks (excluding holidays)	Tuition fee (NZD)	Resources fee (NZD)
Study and Career Preparation for Massage	4	5.5 (no band less than 5.0)	20	9,500	900
Diploma in Wellness and Relaxation Massage	5	5.5 (no band less than 5.0)	40	19,500	1,250
Diploma in Clinical Massage Therapy	6	6.0 (no band less than 5.5)	40	19,500	1,250

Intake Dates*
Jan - Nov 2020





Programme options	NZQA level	IELTS requirements	Weeks (excluding holidays)	Tuition fee (NZD)	Resources fee (NZD)
Makeup Essentials	3	5.0 (no band less than 5.0)	16	12,600	1,750
Hairdressing Essentials	3	5.0 (no band less than 5.0)	34	19,500	1,750
Barbering Essentials	3	5.0 (no band less than 5.0)	32	19,500	1,750
Hairdressing Emerging Stylist	4	5.5 (no band less than 5.0)	34	19,500	1,750
Professional Makeup Artistry for Fashion, Film & Media	4	5.5 (no band less than 5.0)	34	19,500	1,750
Diploma in Special Effects & Prosthetic Makeup Artistry	5	5.5 (no band less than 5.0)	32	19,500	1,750

Intake Dates*

Jan - Nov 2020



Auckland City
Wellington

Further information

Homestay accommodation

An international student will get the best New Zealand lifestyle experience when they live with a New Zealand Homestay Accommodation.

Homestay accommodation: Includes a room for the student with a bed, desk, adequate heating and internet access. Meals include breakfast and dinner Monday-Friday, and breakfast, lunch and dinner on Saturdays/Sundays/public and school holidays. Laundry is also included.

Homestay Plus accommodation: Families can accommodate up to two international students at a time. A separate bathroom is available for the student(s) to use.

- A 24/7 call centre number is provided in case of emergency
- All accommodation arrangements are thoroughly checked – each homestay family is interviewed and the home inspected to our satisfaction before we coordinate a student placement
- All homestay providers sign a contract agreeing to specific rules and standards and undergo a vetting procedure by New Zealand Police
- All students are visited in their accommodation a minimum of three times per year by homestay staff
- All payments are made to the homestay provider via the Student Fees Trust

Homestay fees

	Auckland Central*	Rest of Auckland/NZ
Homestay Under 18	NZ\$335	NZ\$305
Homestay 18 and over	NZ\$320	NZ\$290
Homestay Plus Under 18	NZ\$370	NZ\$340
Homestay Plus 18 and over	NZ\$355	NZ\$325

Note: All homestay fees are weekly rates. Additional days are charged at one-seventh the weekly rate. For homestay placements in Auckland Central, the weekly rate increases by NZ\$30.*

* Includes City Centre, Mt Eden, Epsom, Freemans Bay, Grafton, Greenlane, Grey Lynn, Herne Bay, Kingsland, Newmarket, Newton, Parnell, Pt Chevalier, Ponsonby, Remuera, St Marys Bay, Sandringham.

Additional accommodation fees (if applicable)

Accommodation Placement Fee*	NZ\$300
Under 18 Accommodation Guarantee and Services Fee**	NZ\$600 per year
Change of Homestay Fee	NZ\$100+ per change
Homestay retainer rate^	NZ\$100 per week
Airport greeting and transfer	NZ\$110

+ Fee charged if UP Education coordinates student accommodation

** Fee charged where a student under 18 lives with a homestay provider arranged by the parent(s), student or their representative, allowing for accommodation to be checked once per term to ensure Code of Practice requirements are being met (not payable by New Zealand citizens or permanent residents)

+ Fee applies when student requests a change of homestay for reasons deemed unacceptable, or when student frequently changes homestays (fee charged at discretion of Registrar)

^ Weekly rate when student is away on holiday and requests room/ belongings be held by homestay host (rate charged after fifth day)

Student apartments

Students over 18 may wish to book apartment accommodation. Note that this is the responsibility of the student/parent(s)/agent to arrange (UP Education can supply a list of providers in Auckland and Wellington).



Programme options	NZQA level	IELTS requirements	Weeks (excluding holidays)	Tuition fee (NZD)	Resources fee (NZD)
Makeup Artistry and Skin Care	3	5.0 (no band less than 5.0)	18	11,000	1,800
Beauty and Body Essentials	4	5.5 (no band less than 5.0)	32	18,000	1,800
Professional Face, Body and Spa Therapies	5	5.5 (no band less than 5.0)	36	19,500	2,300

Intake Dates*

Jan - Nov 2020



Auckland City
Hamilton
Wellington



Intake Dates

For exact and confirmed intake dates please contact your usual UP Education representative.

Additional fees

Registration feeNZ\$300

Airport greeting and transfer fee (*one way, per person*) NZ\$110

Medical and travel insurance* (*12 months*)NZ\$633

**International students are required to have comprehensive medical and travel insurance while in New Zealand. UP Education will arrange cover for students through the Southern Cross International Student travel insurance policy to cover the duration of the student visa. For full details, visit scti.co.nz/international-student.*

Resource fees

Resources Fee NZMA Group

The Resources fee is charged for every year of study a student undertakes covers the cost of the take home component of equipment, materials, print and electronic resources, licences to access software, the cost of consumables (ingredients) utilised for practical sessions, verifications and practical assessments which all students undertake over the duration of their programme of study. For NZMA and The Culinary Collective Culinary Arts programmes a uniform and a knife set is included.

Resources Fee (Yoobee Colleges)

The Resources fee is charged for every year of study a student undertakes covers the cost of the take home component of equipment, materials, print and electronic resources, licences to access software, the cost of consumables utilised for practical sessions, verifications and practical assessments which all students undertake over the duration of their programme of study.

Resources Fee NZST Group

The Resources fee is charged for every year of study a student undertakes covers the cost of the take home component of equipment, materials, print and electronic resources, licences to access software, the cost of consumables utilised for practical sessions, verifications and practical assessments which all students undertake over the duration of their programme of study. For NZST the cost of the uniform, Diploma Study Tour Costs and offshore trips are additional.

Payment of fees

Fees are payable in New Zealand or US dollars to:

Bank account

Account name: UP Education Student Fees Trust

Account no: 01-1839-0119888-00

Bank: ANZ NZ Ltd, Cnr Queen & Victoria Sts, Auckland, New Zealand

SWIFT: ANZBNZ22

REF: Student name and ID#

Credit card

UP Education accepts payments by Visa or Mastercard. Please note that payments by credit card attract an additional fee of 2%. To obtain a credit card payment form, contact: neweducationadmissions@up.education

Post-study work visas

On successful completion of study students may apply for a post-study work visa, which allows them to remain in New Zealand to work for one to three years.

If the student's first student visa application was made on or after 8 August 2018:

- Employer assistance to obtain a post-study work visa is no longer required
- A one-year post-study open work visa is available for students studying Levels 4–6 and non-degree Level 7 qualifications, with an additional year for Graduate Diploma graduates who are working towards registration with a professional or trade body
- A two-year post-study open work visa is available for students studying Levels 4–6 and non-degree Level 7 qualifications outside Auckland, provided study is completed by December 2021, at which point the entitlement for post-study work rights reverts to a one-year post-study open work visa for students studying Level 4–6 and non-degree Level 7 qualifications, with an additional year for Graduate Diploma graduates who are working towards registration with a professional or trade body
- A three-year post-study open work visa is available for degree Level 7 or above qualifications
- International students studying Level 8 qualifications are required to work in an area specified on New Zealand Immigration's Long Term Skills Shortage List in order for their partner to be eligible for an open work visa and for the partner's dependent children to be eligible for fees-free domestic schooling

For students already in New Zealand who applied for a student visa before 8 August 2018, previous post-study work visa requirements apply.

For further information, visit: immigration.govt.nz

Note: The above information does not constitute immigration advice. Contact the Immigration Advisors Authority for further advice at: iaa.govt.nz

UP Education has two IAA-registered staff members available to assist students once they have commenced study and wish to apply for a post-study work visa.

Summary of terms implied by statute

This summary records the minimum requirements imposed on the College by statute as at the date of publication of this application form. The summary will be deemed to be incorporated into each Contract of Enrolment.

The summary is not intended as a substitute for the statutory requirements and in the event of any conflict between the summary and a statute, the terms of the relevant statute will prevail. If any relevant statute is amended following the date of publication of this summary, and such an amendment imposes obligations on the College, then this summary and the relevant Contract of Enrolment will be deemed to be amended accordingly.

Student fee protection

The Student Fee Protection Rules 2013 (v5) made under section 253 of the Education Act 1989 and the Education (Pastoral Care of International Students) Code of Practice 2016 (and associated guidelines) contain provisions relating to the protection of student fees.

In order to comply with the various obligations under these provisions, student fees paid in advance are held in trust by the UP Education Student Fees Trust or another independent trustee. Fees are transferred from the relevant trust to the college operating account after commencement, in stages as the course is completed.

In the event where a programme is terminated and alternative tuition services are not provided, the student may be entitled to a refund of prepaid student fees pro rata for the balance of the course based on the number of full weeks required to complete the programme subject to and in accordance with the refund policies set out in the Contract of Enrolment.

Privacy Act

The Privacy Act 1993 came into force on 1 July 1993 with the stated aim of protecting the privacy of natural persons. It requires the School/College to collect, use, store and disclose personal information in accordance with the 12 information privacy principles in the Act available on the Privacy Commissioner's website at: privacy.org.nz/the-privacy-act-and-codes/privacy-principles/

The College complies with the principles of the Privacy Act 1993 (and the information privacy principles in that Act) in respect of personal information. Personal information is collected by the College during the enrolment process and during the period in which the student is enrolled at the College and is intended for use in connection with the education and wellbeing of the student. Information will be stored on College files and databases and all practicable security measures will be maintained. A unique identifier will be assigned to each student, which will be used in conjunction with a secondary means of identification or password/PIN. Staff members and other personnel within the College or within agencies under contract to the College will have access to student personal information for purposes relevant to normal College operations including but not limited to: student recruitment, marketing, admission, enrolment, study, academic progress, tuition fees and charges, establishing and maintaining academic records, assessment, academic agreements (scholarship providers or sponsors, programme delivery partners), academic advice and support, student services, discipline, security and safety, library and IT services, managing records of graduates, and other alumni, and managing and improving the quality of services provided by the College.

In order to conduct its proper business and as required under the Education Act 1989 and other laws, regulations and contractual agreements by which it is bound, the College may use the student information it holds and may disclose information to external agencies such as government departments, bodies responsible for course moderation and professional accreditation or membership, agencies for financial support and pastoral care. This includes use and disclosure as required for the College to comply with the requirements of the Ministry of Education (student statistical returns), New Zealand Qualifications Authority (Record of Learning registration and unit standard outcomes), Tertiary Education Commission

(funding returns), industry training organisations (funding and academic outcomes), Ministry of Social Development (confirmation of enrolment and academic outcomes), Inland Revenue Department (student loan interest rebate) and Immigration New Zealand (if the student is not a New Zealand citizen or permanent resident).

In addition, the College may disclose personal information to Government agencies such as the New Zealand Police, Department of Justice, Ministry of Social Development and the Accident Compensation Corporation (ACC). In signing the Acknowledgment section of this Information and Application Form and the Enrolment Acceptance Form when the student accepts an offer to study, the student authorises such disclosure on the understanding that the College will observe the general conditions governing the release of information, as set out in the Privacy Act 1993 and the Education Act 1989.

The College will make information held about a student available to the student upon request and in accordance with the Privacy Act 1993, which also describes the conditions under which information may be withheld. Students have the right to request correction of personal information held in accordance with the provisions of the Privacy Act 1993. If a student withholds information or provides incomplete, false or misleading information, the College may decline or cancel the admission or enrolment and may withhold the academic record if its veracity cannot be confirmed.

Code of Practice requirements

The College has agreed to observe and be bound by the Education (Pastoral Care of International Students) Code of Practice 2016 administered by the Ministry of Education. A copy of the Code and the associated guidelines are available on the NZQA website at: nzqa.govt.nz/providers-partners/education-code-of-practice/Immigration

Full details of visa and permit requirements, advice on rights of employment in New Zealand while studying and reporting requirements are available through the New Zealand Immigration Service, and can be viewed on their website at: immigration.govt.nz

Eligibility for health services

Most international students are not entitled to publicly funded health services while in New Zealand. If you receive medical treatment during your visit, you may be liable for the full costs of that treatment. Full details on entitlements to publicly funded health services are available through the Ministry of Health, and can be viewed on their website at: moh.govt.nz

Accident insurance

The Accident Compensation Corporation (ACC) provides accident insurance for all New Zealand citizens, residents and temporary visitors to New Zealand, but students may be liable for all other medical and related costs. Further information can be viewed at: acc.co.nz

New Zealand Government Export Education Levy

The New Zealand Government has imposed an international student levy on tuition and course-related fees. The levy is currently set at 0.50% of the compulsory tuition fees. Further information can be found at: education.govt.nz/our-work/consultations/recent-consultations/export-education-levy-consultation/

Goods and Services Tax (GST)

All fees are quoted in New Zealand dollars and include Goods and Services Tax (GST) where applicable. This is a New Zealand Government tax payable on the supply of goods and services. GST is currently set at 15% and applies to all services we deliver. Further information can be found at: classic.ird.govt.nz/gst/gst-registering/gst-about/



All enquiries and applications to:

UP International College New Zealand
345 Queen St, Auckland
PO Box 6199, Wellesley St, Auckland 1141, New Zealand
T +64-9-307 5399
E admissions@up.education

up.education