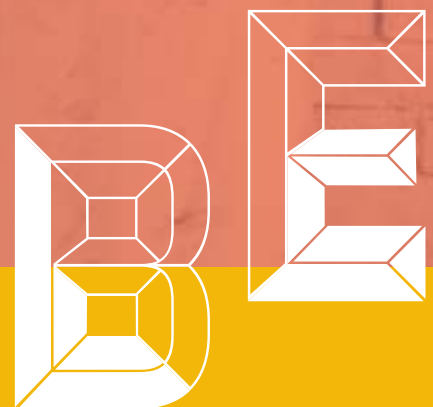




TAFENSW

INTERNATIONAL



AMBITIOUS

**STUDY IN THE CENTRE
OF SYDNEY AT TAFE NSW**

Australia's largest training provider
dedicated to delivering practical
skills and work experience

**2019 INTERNATIONAL
STUDENT GUIDE**

[TAFENSW.EDU.AU/INTERNATIONAL](https://www.tafensw.edu.au/international)

DIVE IN TO THE BEST LIFESTYLE

Studying at TAFE NSW offers you more than just access to outstanding teachers, state-of-the-art facilities and incredible industry connections - it also offers you the famous Australian lifestyle. Relax in world class museums or art galleries, soak up the sun on one of hundreds of beaches, or enjoy the café lifestyle that has made New South Wales one of the world's favourite travel destinations. However you like to relax, it's all on your doorstep when you study with TAFE NSW.



CONTENTS

Welcome to TAFE NSW	5	Music Studies	28
Find us online	6	Nursing	28
How to use this guide	6	Tourism and Events	29
		Other courses	29
		TAFE NSW Degrees	33
LEARN about TAFE NSW		TAFE NSW to University	38
Why TAFE NSW?	8	Course list, fees and locations	40
DECIDE on a course and qualification		CHOOSE a location that suits your lifestyle	
Find your course	12	Life at TAFE NSW	62
English language courses	14	Locations	63
Popular TAFE NSW courses	16		
Accounting	17		
Aged Care – Individual Support	17	CHECK the entry requirements and fees	
Animal Care	18	Course entry requirements	66
Architectural Studies	18	Your level of English	66
Building and Construction	19	Your student visa application	66
Business and Management	20	TAFE NSW fees	67
Children’s Services	20	Scholarships	67
Community Services	21	Academic requirements by country	68
Dental Studies	22		
Design	22	APPLY	
Digital Media	23	The process	70
Engineering Studies	23	Checklist	71
Horticulture	24	Term dates	72
Hospitality	24	English Language Courses dates	73
Human Resources	25	How to complete the application form	74
Information Technology	26	Application form	75
Marketing and Communication	27		

The information in this brochure is correct as of August 2018. TAFE NSW regularly reviews its curriculum to make sure it meets current industry requirements and holds the right to remove and change courses at short notice. TAFE NSW to University pathways, tuition fees and course locations are current at the time of printing but subject to review and change at short notice. For the latest information, visit tafensw.edu.au/international.

WELCOME



Welcome to TAFE NSW: a world of education and training opportunities.

Whether it be improving your language skills, studying for a career or completing a bachelor degree, TAFE NSW is the first choice for students who want practical, real world skills along with theoretical knowledge.

TAFE NSW is Australia’s largest skills and education provider, and has been providing training and education for over 130 years. Because we’re fully owned by the New South Wales (NSW) Government, our nationally accredited courses are government guaranteed. We enjoy a 96% satisfaction rating among NSW employers for the training we provide, while 82% of our graduates find employment after training – a higher percentage than university graduates.

We have locations all over New South Wales, from the golden beaches to the wide open countryside to the bustling, cosmopolitan metropolis of Sydney. Wherever you choose to study, you’ll find a rich and rewarding experience waiting for you, with small class sizes taught by dedicated teachers who are professionals in your chosen industry.

We are supremely confident in the education and training we offer at TAFE NSW – a confidence backed by a recent survey of international onshore Vocational Education and Training (VET) graduates, where 88.8% of respondents said they would recommend the training they received.

Thank you for considering TAFE NSW. We look forward to welcoming you and providing you with an international study experience which sets you on the path to success.

Jon Black
Managing Director of TAFE NSW

FIND US ONLINE

TAFE NSW is where ambition lives.

This guide introduces you to everything that TAFE NSW offers, and goes hand-in-hand with the wealth of information on the TAFE NSW International website.

Visit the TAFE NSW International website

tafensw.edu.au/international

The website has all the information you need to make an informed decision about studying at TAFE NSW. It's regularly updated with:

- details of all currently available courses and pathways
- agent contact information
- online shortcuts to everything you need to apply for a TAFE NSW course
- links to documents and forms.

QR code

A QR code is a barcode which you can read on your smart device. When a smartphone or tablet scans the code, a related web page opens.

How to use

1. Open your QR reader app.
2. Place your device's camera over the code; it will auto focus and scan the code.
3. The selected web page will open.



WEBSITE
tafensw.edu.au/international



HOW TO USE THIS GUIDE

1 Learn about TAFE NSW

TAFE stands for Technical and Further Education. Discover why TAFE NSW can provide the best start to your dream career. Learn about our teachers, locations, courses – and why you can feel safe choosing TAFE NSW.

Start thinking about where you would like to live, study and work in New South Wales (NSW), and get excited about launching your new career.

- **Why Study with TAFE NSW? Page 9**

2 Decide on a course and qualification

Find your ideal course using the profiles in this guide for inspiration. There are so many to choose from, so be sure to visit tafensw.edu.au/international to discover all your options. Then choose the qualification level you require, whether certificate, diploma, advanced diploma, associate degree or bachelor degree.

TAFE NSW also offers English language courses, so you can improve your English and prepare for your studies.

- **English language courses: Pages 14-15**
- **Popular TAFE NSW courses: Pages 16-29**
- **TAFE NSW degrees: Pages 33-36**
- **TAFE NSW to University: Pages 38-39**

3 Choose your TAFE NSW location

There are so many locations to choose from, each offering their own unique qualities. Find out more about life on location - visit tafensw.edu.au/international

- **TAFE NSW locations: Page 63**

4 Check the entry requirements and likely cost

Before you apply for a course, make sure you meet the entry requirements and have worked out how much you'll need to pay.

Note that you may need to take an English test before enrolling in a TAFE NSW course, depending on visa requirements and your English language level.

- **Your enrolment: entry requirements, visas, fees and scholarships: Pages 64-67**

5 Apply

Once you have decided on your course and a location that offers it, the only thing left to do is apply. You can apply through a registered agent, online, or by email. The most popular method is to apply through a registered TAFE NSW agent.

- **How to apply: Page 70**

WHY TAFE NSW?

We know that leaving home to study in another country can be as challenging as it is exciting. That's why at TAFE NSW we partner with some of the largest brands and employers in Australia, including PwC Australia and Cisco, to ensure you get the practical, real world skills you need to get a job and succeed in the workplace.

Choose with confidence

As a government-owned institution with over 130 years of experience, TAFE NSW is the trusted choice in education and training. As such, you can be sure that your course is 100% financially secure.

Study in amazing locations

With 130 locations across metropolitan Sydney and in cities and towns around NSW, you can be sure there's one that fits your lifestyle. Most importantly, each location has dedicated teaching staff utilising industry-standard training facilities.

Learn from experience

TAFE NSW teachers excel in their profession and bring their expertise to the classroom. For example, Dr Barry Nielsen is a veterinarian with over 25 years clinical experience. Dr Nielsen was a former practice owner at Animal Doctors, and has been a teacher at TAFE NSW Ultimo for over 12 years. He specialises in teaching Veterinary Nursing to career changers and mature age students who love animals.

TAFE NSW Business and Education Head Teacher Richard Baranski recently won a Winston Churchill Memorial Trust Fellowship. Richard will use the Fellowship to undertake a journey around the world to research exciting new ways to implement robotics into Australian educational programs.

Get the support you need

A staggering 88.8% of international onshore graduates say they would recommend the VET training they received.

Become a job ready graduate

TAFE NSW has a 96% satisfaction rating among NSW employers for the training we provide, while 82% of our graduates find employment after training - a higher percentage than university graduates.

Go further

Your TAFE NSW qualification will take you places - it can be the platform for a great career, or the basis for further study with us, elsewhere in Australia, or overseas.

Australian universities recognise our qualifications, and you may be eligible for credit towards a degree at university. We also offer our own bachelor degrees, and have pathway agreements with several Australian universities.

Our TAFE NSW to University program grants you guaranteed entry with six Australian universities.

TAFE NSW Qualifications

We have English language degrees that can set you on the path to a rewarding career. We also have other learning options, such as certificates, diplomas and advanced diplomas.

TAFE NSW qualifications are based on the Australian Qualification Framework (AQF). AQF qualifications meet national standards in education and training, and are recognised across Australia.

BE JOB READY



TAFE NSW – PARTNERING WITH AUSTRALIA’S BEST FOR YOUR SUCCESS

TAFE NSW creates first class learning experiences and quality, personalised services that help our students reach their goals.

Part of the strength of TAFE NSW lies with the industry partnerships we have established that can provide our students with mentorships, internships, work placements and real career opportunities.

Design Centre Enmore

TAFE NSW Design Centre Enmore (DCE), located in Sydney’s vibrant and cosmopolitan inner west, is one of Australia’s most celebrated design centres.

Featuring a wide variety of design disciplines, the DCE offers an intimate setting where staff and students can exchange ideas in an immersive, creative environment.

DCE works closely with industry to ensure students are trained to the highest standards, using the latest technologies and equipment. You could follow in the successful footsteps of alumni such as:

- Greg Natale (Greg Natale Design Studio)
- Sebastian Barkoczy (Freelance Designer)

Fashion Design Studio

The Fashion Design Studio (FDS), ranked in the top 20 Fashion Schools in the world, is internationally recognised for its innovation and creativity, and is considered the premier Fashion Design Institute in Australia. The Fashion Design Studio has an alumni that reads like a ‘Who’s Who’ list of Australian fashion, including:

- Akira Isogawa
- Alex Perry
- Nicky Zimmermann
- Lisa Ho



Speciality hospitality centres

As well as partnering with leading industry organisations, TAFE NSW also operates specialty hospitality learning centres staffed by hospitality experts. One of these centres is ‘The Apprentice’ licensed training restaurant in Ultimo.

Opened to the public, ‘The Apprentice’ has trained some of Australia’s leading chefs, restaurant and hotel managers. It has regular guest chefs and special events throughout the year, and provides hands-on, first class practical skills in both front and back-of-house restaurant operations.

Le Cordon Bleu Sydney

The Le Cordon Bleu Sydney Culinary Institute offers vocational, undergraduate and postgraduate study programmes in partnership with TAFE NSW.

CISCO Academy

TAFE NSW and Cisco have an ongoing 18-year partnership, with our award winning Cisco Academy Training Centre offering the complete end-to-end networking experience that’s required by industry.

The International Convention Centre Sydney

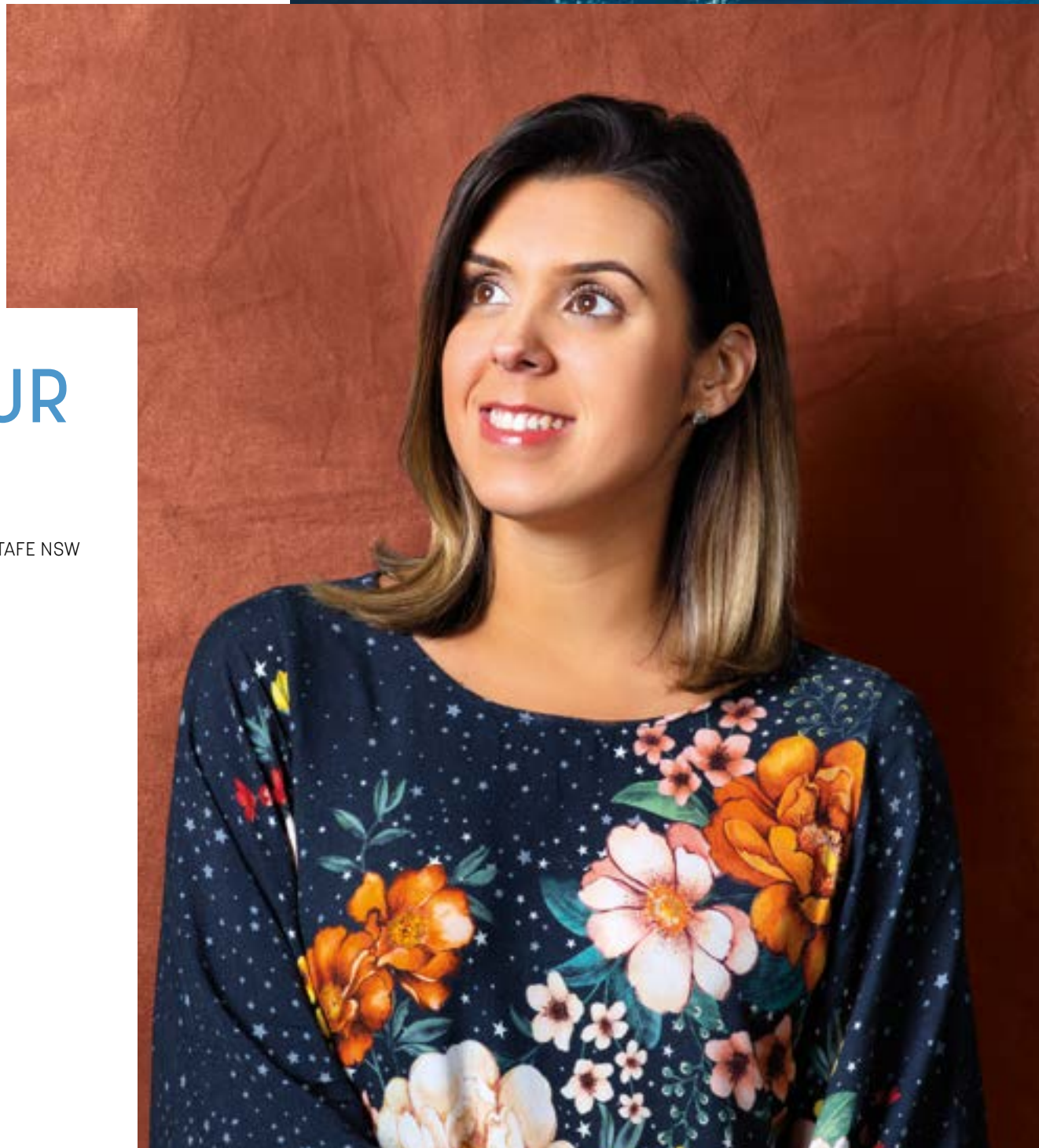
As the Asia Pacific’s premier integrated convention, exhibition and entertainment venue, International Convention Centre Sydney (ICC Sydney) selected TAFE NSW as their official training partner.

PwC Australia

Working collaboratively with PwC Australia, TAFE NSW assisted in the development of a new training concept and pilot program that delivers competent, professionally skilled potential employees, ready to create an exciting and inspiring career with the firm.

FIND YOUR COURSE

The practical skills you learn at TAFE NSW will have you job ready faster.



ENGLISH LANGUAGE COURSES

TAFE NSW can help you meet the English language requirements of your chosen Vocational or Higher Education course.

Our English Language courses offer flexible study options and commence every Monday, 50 weeks of the year. When you enrol you'll enjoy access to all the campus facilities, as well as the support of highly experienced and qualified teachers who will develop your reading, writing and speaking skills.

Once you successfully complete your English course you will be confident in your ability to communicate, as well as automatically satisfy the pathway entry requirements of your chosen TAFE NSW vocational or higher education course. You can study English as a stand-alone course or package it with a TAFE NSW Degree, advanced diploma or certificate course.

TAFE NSW English Language Programs include:

ENGLISH LANGUAGE PROGRAMS, BEGINNERS TO ADVANCED - (2 - 50 weeks, 20 hours per week) CRICOS #069146A
This course includes English for Academic Purposes.

- ENGLISH FOR EXAM PREPARATION** - (2 - 50 weeks, 20 hours per week) CRICOS #074348D
- Cambridge C1 Advanced (CAE) - delivered at TAFE NSW Newcastle only
 - Cambridge B2 First (FCE) - delivered at TAFE NSW Newcastle only
 - IELTS Preparation available on demand
 - Occupational English Test (OET) evening classes for test practice available on demand – delivered at TAFE NSW Newcastle only.

To find out more, contact one of eight TAFE NSW English Language centres across NSW to find out what options are available in each location to help you meet your English language goals.

Please note, the length of your English course will depend on your English proficiency at the time of enrolment, your progress during the course, and the entry requirements for the course that you want to study afterwards.

For detailed course information: [tafensw.edu.au/international](https://www.tafensw.edu.au/international)



TAFE NSW English Language Centres



Sydney centres: Ultimo, Liverpool Meadowbank



Sydney and Regional centres: Ultimo, Liverpool, Meadowbank, Newcastle and Kingscliff



Regional centre: Newcastle



Regional centre: Newcastle

Regional English Language Centres:
Port Macquarie, Coffs Harbour, Wollongong

OUR ENGLISH LANGUAGE COURSES OFFER FLEXIBLE STUDY OPTIONS AND COMMENCE EVERY MONDAY, 50 WEEKS OF THE YEAR.

A typical week in an English class

The best learning results come from mixing teaching methods, which is why a typical week in an English class will have you reading, writing, listening and participating in group discussions and conversations. With twenty hours per week of varied study, you'll learn English easier and faster at TAFE NSW.



ENGLISH COURSES

Course no./National code	Course name	Duration	Award level	Fee*
069146A	English Language Programs (Beginner to Advanced)	Up to 50 weeks	TAFE Statement	\$320 per week
	Includes English for Academic Purposes	Up to 50 weeks	TAFE Statement	\$320 per week
074348D	English for Exam Preparation	Up to 50 weeks	TAFE Statement	\$320 per week

Note: Not all courses are offered in all locations. Please contact the TAFE NSW English Language Centres to find out the courses offered in the particular location.

POPULAR TAFE NSW COURSES

You may already have a career in mind, or be simply looking for inspiration. Whichever the case, your search starts here.

There's a good chance that your chosen course is featured among those profiled in the following pages. But if it's not, visit [tafensw.edu.au/international](https://www.tafensw.edu.au/international) to discover the full range of courses we offer.

In the course profiles, you'll find:

- Possible career options, depending on the qualifications you achieve. See the course details on the website to learn how certain qualifications relate to certain careers.
- The qualifications offered are subject to change – again, see the website for current details.
- The fee ranges indicated reflect course area fees across all TAFE NSW locations, and include all qualification levels.

For full details and even more inspiration, check out the full range of courses at:

[tafensw.edu.au/international](https://www.tafensw.edu.au/international)

ACCOUNTING

If you enjoy working with numbers, study accounting to give yourself highly desirable skills. Finance, banking and accounting are strong growth areas, so if you have a mind for numbers, be a part of this exciting industry.

CAREER OPPORTUNITIES

- Account planning manager
- Accounts supervisor
- Assistant accountant
- Business Activity Statement (BAS) agent
- Financial analyst
- Lending officer
- Insurance advisor
- Tax advisor
- Bookkeeper
- Office administrator
- Credit card services officer
- Payroll manager
- Senior accounts clerk
- Accounts clerk

FEE RANGE

BACHELOR DEGREE
AUD \$7,360 per semester

VOCATIONAL COURSES
AUD \$7,230 - \$9,940 per semester

COURSE DURATION:
0.5 - 3 years

QUALIFICATIONS OFFERED

BACHELOR DEGREE

- Bachelor of Applied Commerce - (Accounting)
- Bachelor of Applied Commerce - (Financial Planning)

ADVANCED DIPLOMA

- Accounting

DIPLOMA

- Accounting
- Financial Planning

CERTIFICATE IV

- Accounting

Please Note:

To become an accountant in Australia, you are required to have your qualifications assessed by one of the three major Australian professional accounting associations:

- Certified Practicing Accountants of Australia (CPA Australia)
- Institute of Chartered Accountants in Australia (ICAA)
- Institute of Public Accountants (IPA).

AGED CARE INDIVIDUAL SUPPORT (AGEING)

Are you passionate about caring for others? Aged and disability carers provide critical support to people in care facilities, hospitals or in their homes. Learn how to care for older people with hands-on work placement and on-location simulated workplaces, and look forward to diverse and secure job opportunities in a growing sector.

CAREER OPPORTUNITIES

- Personal care worker
- Care assistant
- Nursing assistant
- Care supervisor
- Aged care accommodation support worker

FEE RANGE

AUD \$7,940 - \$12,070 per semester

COURSE DURATION:
0.5 - 1 year

QUALIFICATIONS OFFERED

CERTIFICATE IV

- Ageing Support

CERTIFICATE III

- Individual Support (Ageing)

ANIMAL CARE

Are you a true animal lover? Our courses will teach you how to handle, train and care for all types of animals in all situations, from domesticated animals to those found in the wild. With significant work placement and on-the-job training, you will begin working with animals and dealing with real-life situations during your studies.

CAREER OPPORTUNITIES

- Animal care worker
- Animal care industry worker
- Veterinary nurse
- Wildlife animal carer

FEE RANGE

AUD \$5,905 - \$8,670 per semester

COURSE DURATION:
0.5 - 1 year

QUALIFICATIONS OFFERED

- CERTIFICATE IV**
- Veterinary Nursing
- CERTIFICATE III**
- Captive Animals

BUILDING AND CONSTRUCTION

Our range of building and construction courses have been developed in partnership with industry to make sure the skills you learn apply directly to your work. Prepare yourself for a career in the structural, architectural or engineering services needed to plan major work, from initial designs through to work with government and contractors.

CAREER OPPORTUNITIES

- Senior civil works designer
- Paraprofessional designer
- Architectural drafts person
- Architectural technician
- Building information modelling specialist
- Accredited building designer
- Cartographer
- CAD operator
- Carpenter
- Project manager on medium rise building projects
- Town planning officer
- Town planning surveyor

FEE RANGE

AUD \$8,430 - \$10,370 per semester

COURSE DURATION:
0.5 - 2 years

QUALIFICATIONS OFFERED

- DIPLOMA**
- Building and Construction (Building)
 - Surveying
- CERTIFICATE IV**
- Building and Construction (Building)
 - Surveying
- CERTIFICATE III**
- Carpentry
 - Bricklaying/Blocklaying
 - Surveying and Spatial Information Services
 - Wall and Floor Tiling
 - Painting and Decorating

ARCHITECTURAL STUDIES

Covering both building theory and drafting skills, architectural studies gives you the ability to build a career in the development and construction industry. Learn the latest sustainable building and construction theories, while gaining impressive practical drafting, sketching and CAD modelling skills.

CAREER OPPORTUNITIES

- Architectural drafts person
- CAD technician
- Building information modeller

FEE RANGE

AUD \$7,233 - \$7,234 per semester

COURSE DURATION:
1 - 2 years

QUALIFICATIONS OFFERED

- DIPLOMA**
- Building Design



“TAFE NSW teachers have been very friendly and supportive. The career counselling has helped me to find the best way to study and still be able to work. The community is also very supportive of international students.”

BUSINESS AND MANAGEMENT

CAREER OPPORTUNITIES

- Client relationship manager
- Client service and administration
- Public relations officer
- Information officer
- Publicity officer
- Administration manager
- Office manager
- Export and import manager
- Trade manager

Business, administration and management skills are useful across a wide range of sectors and industries. Start your own business or climb the ladder in the corporate world with project management experience, marketing knowledge and relationship-building skills.

FEE RANGE	QUALIFICATIONS OFFERED
<p>BACHELOR DEGREE AUD \$7,360 per semester</p> <p>VOCATIONAL COURSES AUD \$6,030 - \$9,310 per semester</p> <p>COURSE DURATION: 0.5 - 3 years</p>	<p>BACHELOR DEGREE</p> <ul style="list-style-type: none">■ Bachelor of Business <p>ADVANCED DIPLOMA</p> <ul style="list-style-type: none">■ Leadership and Management■ Business <p>DIPLOMA</p> <ul style="list-style-type: none">■ Business■ Business Administration■ Leadership and Management■ International Business <p>CERTIFICATE IV</p> <ul style="list-style-type: none">■ International Trade■ Business Administration■ Small Business Management■ Leadership and Management <p>CERTIFICATE III</p> <ul style="list-style-type: none">■ Business Administration



“Having completed my Bachelor Degree in India and a couple of Masters degrees in Italy and the UK, I was coming to Australia with a very specific mission in mind. TAFE NSW’s strong industry connections, as well as the quality of teachers, all active within the industry, made it my first choice.”

CHILDREN’S SERVICES

Demand for knowledgeable early childhood education and care workers is high, both in Australia and around the world. People working in children’s services have a positive impact on a child’s growth, learning and development. A major on-the-job training focus means you will start working in an Early Childhood Education and Care centre during your studies.

CAREER OPPORTUNITIES

- Teacher or director in long day care or preschool
- Integrated child and family services officer
- Early intervention services officer
- Qualified child care worker
- Service/centre manager

FEE RANGE	QUALIFICATIONS OFFERED
<p>BACHELOR DEGREE AUD \$6,540 per semester</p> <p>VOCATIONAL COURSES AUD \$7,005 - \$7,910 per semester</p> <p>COURSE DURATION: 0.5 - 4 years</p>	<p>BACHELOR DEGREE</p> <ul style="list-style-type: none">■ Early Childhood Education and Care (Birth-5) <p>DIPLOMA</p> <ul style="list-style-type: none">■ Early Childhood Education and Care <p>CERTIFICATE III</p> <ul style="list-style-type: none">■ Early Childhood Education and Care

COMMUNITY SERVICES

Are you community minded, with an interest in helping people from different social and cultural backgrounds? A community services course shows you how to coordinate volunteers, work in mental health, or assist in residential care while making a real difference in the lives of others.

CAREER OPPORTUNITIES

- Senior case worker
- Community services worker
- Community support worker
- Domestic violence worker
- Outreach officer
- Welfare support worker
- Care worker
- Personal care worker

FEE RANGE	QUALIFICATIONS OFFERED
<p>AUD \$5,780 - \$6,480 per semester</p> <p>COURSE DURATION: 1 year</p>	<p>DIPLOMA</p> <ul style="list-style-type: none">■ Community Services Work■ Youth Work <p>CERTIFICATE IV</p> <ul style="list-style-type: none">■ Community Services Work

DENTAL STUDIES

Study in a real world dental environment and gain hands-on experience working in the health care industry. Our expert teachers and lecturers have up-to-date experience in the sector, meaning you’ll be taught by the very best to work as a dental assistant or dental technician.

CAREER OPPORTUNITIES

- Dental technician
- Dental assistant

FEE RANGE	QUALIFICATIONS OFFERED
AUD \$6,025 - \$10,033 per semester	DIPLOMA <ul style="list-style-type: none">■ Dental Technology
COURSE DURATION: 1 - 2 years	CERTIFICATE IV <ul style="list-style-type: none">■ Dental Assisting

DESIGN

With specialist courses in interior design, graphic design, product design, jewellery, furniture and design fundamentals, you can build a high level of skill and a deep understanding of your field. Work in modern facilities, enter design competitions and study under experienced professionals in the design world.

CAREER OPPORTUNITIES

- Interior designer
- Colour consultant
- Illustrator (technical, book, comic book/graphic novel, scientific, fashion, Sketch artist)
- Newspaper/magazine/editorial illustrator
- Interior decorator
- Cartoonist
- Digital illustrator
- Animator
- Graphic designer
- Fine furniture maker

FEE RANGE	QUALIFICATIONS OFFERED
BACHELOR DEGREE AUD \$9,800 per semester	BACHELOR DEGREE <ul style="list-style-type: none">■ Design (Interior Design)
VOCATIONAL COURSES AUD \$5,350 – \$13,760 per semester	ADVANCED DIPLOMA <ul style="list-style-type: none">■ Interior Design■ Graphic Design■ Industrial Design
COURSE DURATION: 0.5 - 3 years	DIPLOMA <ul style="list-style-type: none">■ Graphic Design■ Interior Design and Decoration■ Industrial Design
	CERTIFICATE IV <ul style="list-style-type: none">■ Design■ Design (Multi -Discipline)■ Design (Industrial Design)■ Design (Interior Design Foundation)■ Design (Graphic Design)
	CERTIFICATE III <ul style="list-style-type: none">■ Design Fundamentals■ Design Fundamentals (Fashion)

Please Note:
Submission of a portfolio, design or written task is required for entry into Design courses.

DIGITAL MEDIA

Do you want to work in feature film, TV or digital games production? Our digital media courses are practical and industry focused, preparing you for a career in many fields including character design, 3D animator, pre-visualisation and more. We offer general screen and media courses at Certificate III level, through to our highly specialised degrees.

CAREER OPPORTUNITIES

- 3D: animator, lighting artist, modeller, programmer, renderer, texture artist
- Art director
- Character designer
- Compositor
- Digital matte painter
- Games designer
- Production designer

FEE RANGE	QUALIFICATIONS OFFERED
BACHELOR DEGREE AUD \$10,600 per semester	BACHELOR DEGREE <ul style="list-style-type: none">■ 3D Art and Animation
VOCATIONAL COURSES AUD \$6,750 - \$12,170 per semester	DIPLOMA <ul style="list-style-type: none">■ Screen and Media
COURSE DURATION: 0.5 - 3 years	CERTIFICATE III <ul style="list-style-type: none">■ Screen and Media
	CERTIFICATE IV <ul style="list-style-type: none">■ Screen and Media

ENGINEERING STUDIES

If you like to know how things work, an engineering studies course can turn your curiosity into a career. Develop hands-on technical experience working in real-world facilities while you develop the communication, diagnostic and drafting skills needed to excel in your career.

CAREER OPPORTUNITIES

- Electronics and communications engineering technician
- Engineering technician
- Draftsperson, designer or technical officer
- Civil Construction Designer

FEE RANGE	QUALIFICATIONS OFFERED
ASSOCIATE DEGREE AUD \$8,600 per semester	ASSOCIATE DEGREE <ul style="list-style-type: none">■ Applied Engineering (Renewable Energy Technologies)
VOCATIONAL COURSES AUD \$5,490 – \$11,770 per semester	ADVANCED DIPLOMA <ul style="list-style-type: none">■ Civil Construction Design■ Engineering Mechanical■ Engineering Technology – Electrical■ Engineering Technology – Electronics
COURSE DURATION: 0.5 - 3 years	DIPLOMA <ul style="list-style-type: none">■ Civil Construction Design■ Electronics and Communications Engineering■ Engineering – Technical

HORTICULTURE

Learn about organic production, landscaping, irrigation, floral design, proper use of chemicals and how to take care of plants and soil. Get hands-on experience in the field and become familiar with the tools of your trade, from computer-aided design to machinery maintenance.

CAREER OPPORTUNITIES

- Horticulture assistant
- Florist
- Horticulturist
- Parks and gardens manager
- Landscape designer

FEE RANGE

AUD \$5,500 - \$6,150 per semester

COURSE DURATION:
1 - 2 years

QUALIFICATIONS OFFERED

DIPLOMA

- Horticulture
- Landscape Design

CERTIFICATE III

- Horticulture
- Floristry

HUMAN RESOURCES

A human resources qualification will help you in a wide range of leadership positions, and qualifies you to work in human resources as a consultant or as part of an in-house team. You will learn how to be a good mentor, resolve workplace conflicts and enforce workers' rights and workplace safety.

CAREER OPPORTUNITIES

- Line manager/clerk with human resource responsibilities
- Human resource manager
- Human resource officer

FEE RANGE

AUD \$6,620 - \$8,030 per semester

COURSE DURATION:
0.5 - 1.5 years

QUALIFICATIONS OFFERED

ADVANCED DIPLOMA

- Management (Human Resources)

DIPLOMA

- Human Resources Management

CERTIFICATE IV

- Human Resources

HOSPITALITY

Turn your creative, organisational and interpersonal skills into a rewarding and exciting food career. A qualification in hospitality can lead to employment in cookery, hospitality management and food service. There's a large range of course and unit options on offer, and you'll receive specialised training and real world experience in your ideal job.

CAREER OPPORTUNITIES

- Executive chef and chef de partie
- Breakfast cook, short order cook, or fast food cook
- Bar attendant, barista, front desk receptionist, gaming attendant, housekeeper, waiter or wine waiter
- Qualified cook
- Patisserie cook
- Dietetic assistant or nutrition assistant in public and private hospitals
- Baker
- Concierge
- Food and beverage supervisor
- Caterer
- Kitchen manager
- Restaurant manager
- Pastry chef/manager
- Food and beverage manager
- Cafe or small restaurant owner
- Motel owner or manager

FEE RANGE

AUD \$4,270 - \$12,910 per semester

COURSE DURATION:
0.5 - 2 years

QUALIFICATIONS OFFERED

ADVANCED DIPLOMA

- Hospitality Management
- Hospitality (including Certificate IV in Commercial Cookery)
- Hospitality (including Certificate III in Commercial Cookery)

DIPLOMA

- Hospitality Management (including Certificate IV in Commercial Cookery)
- Hospitality Management (including Certificate III in Commercial Cookery)
- Hospitality Management
- Hospitality Management (including Certificate III in Patisserie)

CERTIFICATE IV

- Hospitality Management
- Commercial Cookery
- Patisserie
- Allied Health Assistance (Nutrition and Dietetics)

CERTIFICATE III

- Commercial Cookery
- Patisserie
- Hospitality Management
- Retail Baking (Combined)



"All staff and teachers were very kind, supportive and approachable. They were willing to help at any time and encouraged me to reach my potential. What attracted me most to TAFE NSW was the practical skills I learned. I could take what I learned in class and immediately apply it to my job."

INFORMATION TECHNOLOGY

There are a huge variety of jobs in information technology, with many different courses and pathways to employment in the sector. An IT course will give you specialised skills, experience working with the latest tools and equipment, and the ability to make connections with like-minded people.

CAREER OPPORTUNITIES

- Senior network administrator
 - Information systems manager
 - IT security specialist
- Network:**
- E-business coordinator
 - Engineer
 - Operations analyst
 - Security administrator
 - Security advisor
 - Chief information officer
 - Access services officer
 - Applications architect
- Systems:**
- Administrator
 - Analyst
 - Architect
 - Developer
 - Manager
 - Customer support professional
 - Digital media designer
 - ICT security specialist
 - Information technology manager
 - IT administrator/coordinator
- Web:**
- Administrator
 - Developer
 - Service delivery manager
 - Firewall engineer
 - Intrusion detection analyst
 - 2D or 3D animator
 - PC or mobile games developer

FEE RANGE

BACHELOR DEGREE
AUD \$9,720
per semester

VOCATIONAL COURSES
AUD \$4,835 - \$13,350
per semester

COURSE DURATION:
0.5 - 3 years

QUALIFICATIONS OFFERED

- BACHELOR DEGREE**
- Information Technology (Network Security)
 - Advanced Diploma
 - Information Technology (Network Security)
- DIPLOMA**
- Information Technology
 - Website Development
 - Software Development
 - Database Design and Development
 - Information Technology Networking
 - Information Technology Systems Administration
 - Digital and Interactive Games (Programming)
- CERTIFICATE IV**
- Web Based Technologies
 - Digital and Interactive Games (Programming)
 - Digital Media and Interactive Games (Arts)
 - Digital Media Technologies (Interactive Media)
 - Programming
 - Information Technology Networking
 - Web Based Technologies
 - Information Technology
 - Information Technology Support (Database)
 - Information Technology Support (Service Desk)
- CERTIFICATE III**
- Information, Digital Media and Technology (Network Administration)
 - Information, Digital Media and Technology (Web Technologies)

MARKETING AND COMMUNICATION

Are you creative, forward thinking and strategic? A qualification in marketing and communications will provide good opportunities for jobs in this exciting industry. Study under industry experts, learn marketing theory, develop your creative skills and build a portfolio to start your career.

CAREER OPPORTUNITIES

- Account director, manager or coordinator
- Copywriter
- Media buyer
- Market research assistant
- Advertising creative director
- Direct marketing manager
- Marketing director or manager
- Public relations manager
- Client services director
- Marketing strategist
- Account planning manager

FEE RANGE

AUD \$6,680 - \$13,220
per semester

COURSE DURATION:
0.5 - 1.5 years

QUALIFICATIONS OFFERED

- ADVANCED DIPLOMA**
- Advanced Diploma of Marketing and Communication
- DIPLOMA**
- Diploma of Marketing and Communication
- CERTIFICATE IV**
- Marketing and Communication



"I found the teachers so inspiring, and always encouraging students to ask questions. The course structure was very clear and helped me to organise my time, so I could handle assessments without stress."

MUSIC STUDIES

Whether you want to be a performer, sound engineer or industry executive, studying music is the first step to a successful career in the music business. Learn from working performers, artists and teachers involved in the industry, and study with modern equipment in real studios and audio suites.

CAREER OPPORTUNITIES

- Artist manager, booking agent, music marketing and promotions officer
- Assistant sound engineer or sound designer
- Audiovisual operator
- Composer, instrumentalist or vocalist
- Director, music arranger, musicologist
- Label manager or licensing manager
- Live sound assistant
- Assistant band or assistant artist manager
- Merchandiser
- Music promoter
- Music/artist manager
- Performer
- Sound mixer/technician
- Casual technician

FEE RANGE

AUD \$6,870 - \$11,220 per semester

COURSE DURATION:
0.5 - 1.5 years

QUALIFICATIONS OFFERED

ADVANCED DIPLOMA

- Music Industry (Performance)

DIPLOMA

- Music Industry (Sound Production)
- Music Industry (Music Business)
- Music Industry (Performance)

CERTIFICATE III

- Music Industry (Music Business)
- Music Industry (Performance)
- Music Industry (Sound Production)

TOURISM AND EVENTS

A job in tourism, travel or events management puts you in a career that really is 'going places.' Produce a festival, become a guide or work in international tourism with the knowledge and hands-on experience gained in your studies.

CAREER OPPORTUNITIES

- Tour manager/director
- Events manager
- Cultural tour operations manager
- Director (owner-operator small tourism business)
- Promotions officer
- Reservations sales or call centre supervisor
- Sales coordinator/executive
- Senior or supervisory retail travel consultant

FEE RANGE

AUD \$5,505 - \$8,500 per semester

COURSE DURATION:
0.5 - 1.5 years

QUALIFICATIONS OFFERED

ADVANCED DIPLOMA

- Travel and Tourism Management
- Events Management

DIPLOMA

- Travel and Tourism Management
- Events Management
- Events (including Certificate III in Events)

CERTIFICATE IV

- Guiding
- Travel and Tourism

CERTIFICATE III

- Events
- Travel
- Tourism
- Aviation (Cabin Crew)

NURSING

If you enjoy working with people, consider a career in nursing. Your course will give you all the practical, hands-on skills and training you need to gain employment in hospitals and other facilities, such as aged care. TAFE NSW offers qualifications up to a Diploma of Nursing, with pathways to university for further training.

CAREER OPPORTUNITIES

- Assistant in nursing in public and private acute care facilities
- Assistant in nursing in palliative and aged care facilities

FEE RANGE

AUD \$7,810 - \$9,890 per semester

COURSE DURATION:
0.5 - 1.5 years

QUALIFICATIONS OFFERED

DIPLOMA

- Nursing

CERTIFICATE III

- Health Services Assistance (Assisting in Nursing Work in Acute Care)

OTHER COURSES

We have many more courses for you to choose from. Visit tafensw.edu.au/international for more information.

OTHER COURSES INCLUDE

- Agricultural (Rural) Studies
- Applied Science
- Beauty Services
- Environmental Management
- Environmental Testing
- Equine (Horse) Studies
- Fashion Design
- Fine Arts
- Hairdressing
- Health Services
- Interpreting
- Marine Engineering and Maritime Operations
- Massage Therapy
- Optical Dispensing
- Photo Imaging
- Real Estate Services
- Sport and Fitness
- Telecommunications
- Tertiary Preparation and General Education



TAFE NSW DEGREES

TAFE NSW enjoys an enviable reputation for creating highly capable, industry-ready graduates. Our degrees are designed to give you the foundational knowledge and technical skills you need to excel in your chosen industry. New degree programs are currently being developed in a range of disciplines.

WHAT WE OFFER

Studying at TAFE NSW offers students a huge choice of study locations, as well as small class sizes with easy, direct access to lecturers. The emphasis on applied learning means teaching through hands-on, real world experiences, rather than just lectures and text books. This work-integrated approach gives international students direct contact with their industry, as well as the ability to develop highly desirable, practical skills.

Each TAFE NSW degree offers:

- Training delivered by academic professionals
- Theoretical and practical skills
- A supportive learning environment
- An industry-recognised qualification.

Our programs result in positive outcomes for students:

- Degree programs are developed in consultation with industry to make sure they are current and relevant
- There are industry internship or work experience opportunities
- Courses focus on practical skills
- There are small class sizes
- Staff are caring and friendly
- Teaching is practical and student-focused.

Post-study work arrangements

If you graduate with a TAFE NSW bachelor degree you may be eligible to apply for a Temporary Graduate Visa – Post Study Work Stream.

For more information: homeaffairs.gov.au/Trav/Stud/Post#

For information on employment in Australia: joboutlook.gov.au

For career possibilities and more details: tafensw.edu.au/international

TAFE NSW leading the way

TAFE NSW degrees recorded above national average in skills development, teaching and overall satisfaction.



Overall satisfaction
(82.3% - 88.4%) 198 responses



Teaching scale
(75.2% - 82.3%) 198 responses



Skills scale
(81.2% - 87.5%) 198 responses



TAFE NSW
 NATIONAL AVERAGE

Source: Course Experience Questionnaire 2016-2017
Quality Indicators for Learning and Teaching (QILT)

TAFE NSW DEGREES

POPULAR PATHWAYS

BACHELOR OF 3D ART AND ANIMATION

THIS DEGREE OFFERS:

- A focused, industry relevant educational experience, exploring the scope of local and international 3D and visual effects production practices.
- Skills needed to work across the production pipeline and develop an understanding of how to use visual communication to meet the practical demands of the 3D and visual effects industry.
- Third-year specialisation.

CAREER POSSIBILITIES:

- 3D animator, lighting artist, modeller, programmer, renderer, rigger texture artist
- Art director
- Character or production designer
- Concept or pre-visualisation artist

DURATION:	3 years
TOTAL FEE:	AUD \$63,600
COURSE CODE: CRICOS CODE:	20520 075731M

BACHELOR OF APPLIED COMMERCE

THIS DEGREE OFFERS:

- Two major specialisation streams – Financial Planning and Accounting. Students can choose either one major or can do a double major.
- An industry placement in the third year will give practical experience in a workplace setting, and will help establish valuable industry contacts.

CAREER POSSIBILITIES:

- Accountant (General)
- External auditor
- Management accountant
- Taxation accountant
- Finance manager
- Corporate treasurer
- Financial planner
- Para-planner
- Investment advisor
- Client relationship manager
- Business investment analyst
- Financial analyst
- Institutional banking analyst
- Business investment analyst
- Financial analyst
- Institutional banking analyst

DURATION:	3 years
TOTAL FEE:	AUD \$44,160
COURSE CODE: CRICOS CODE:	HE20531 HE20532 094909K

BACHELOR OF BUSINESS

THIS DEGREE OFFERS:

- Professional skills needed to work in a range of industries and lead in the global marketplace.
- Teamwork and leadership skills.
- Work-based practices and sustainable business models.

CAREER POSSIBILITIES:

- Accounting and finance, management or marketing
- Start your own business

DURATION:	3 years
TOTAL FEE:	AUD \$44,160
COURSE CODE: CRICOS CODE:	HE20514 092518G



TAFE NSW DEGREES

BACHELOR OF DESIGN (INTERIOR DESIGN)			
THIS DEGREE OFFERS: <ul style="list-style-type: none"> ■ Training delivered by well-educated interior designers. ■ An interior design internship. ■ A multidisciplinary approach. <i>Guaranteed entry on completion of TAFE NSW Diploma of Interior Design and Decoration.</i>	CAREER POSSIBILITIES: <ul style="list-style-type: none"> ■ Interior designer for interior design and architectural practices ■ Self-employed design consultant ■ Design project administrator ■ Design manager. 	DURATION:	3 years
		TOTAL FEE:	AUD \$58,800
		COURSE CODE: CRICOS CODE:	20501 071917M

BACHELOR OF EARLY CHILDHOOD EDUCATION AND CARE (BIRTH-5)			
THIS DEGREE OFFERS: <ul style="list-style-type: none"> ■ A multidisciplinary approach. <i>Guaranteed entry on completion of TAFE NSW Diploma of Early Childhood Education and Care.</i>	CAREER POSSIBILITIES: <ul style="list-style-type: none"> ■ Early childhood teacher in long day care, preschool, integrated child and family services, and early intervention services. 	DURATION:	4 years
		TOTAL FEE:	AUD \$52,320
		COURSE CODE: CRICOS CODE:	20510 075653J

BACHELOR OF FASHION DESIGN			
THIS DEGREE OFFERS: <ul style="list-style-type: none"> ■ Tuition from industry professionals. ■ Comprehensive study of theory and creative design practices. ■ Small, studio-based classes. 	CAREER POSSIBILITIES: <ul style="list-style-type: none"> ■ Fashion designer ■ Fashion manager ■ Fashion merchandiser ■ Fashion buyer ■ Fashion stylist. 	DURATION:	3 years
		TOTAL FEE:	AUD \$63,600
		COURSE CODE: CRICOS CODE:	20506 084563C

BACHELOR OF INFORMATION TECHNOLOGY (NETWORK SECURITY)			
THIS DEGREE OFFERS: <ul style="list-style-type: none"> ■ Simulated real world training environment incorporating current cybercrime case studies. ■ Opportunity for students to sit for recognised industry certifications (such as CISCO, CCNA and CCNP). 	CAREER POSSIBILITIES: <ul style="list-style-type: none"> ■ Network/internet security specialist ■ Cyber security analyst ■ Intrusion detection analyst ■ Network security engineer ■ Network monitoring engineer. 	DURATION:	3 years
		TOTAL FEE:	AUD \$58,320
		COURSE CODE: CRICOS CODE:	20524 075370J

BACHELOR OF PROPERTY VALUATION			
THIS DEGREE OFFERS: <ul style="list-style-type: none"> ■ An introduction to property valuation techniques and processes. ■ Interaction with industry experts. ■ Site visits and field trips to enhance the practical learning experience. <i>Graduates of this course will have the knowledge and skills required to practice as a registered valuer in NSW, including the ability to become an Associate Member of the Australian Property Institute.</i>	CAREER POSSIBILITIES: <ul style="list-style-type: none"> ■ Registered valuer. 	DURATION:	3 years
		TOTAL FEE:	AUD \$45,000
		COURSE CODE: CRICOS CODE:	20507 089229K

ASSOCIATE DEGREE OF APPLIED ENGINEERING (RENEWABLE ENERGY TECHNOLOGIES)			
THIS DEGREE OFFERS: <ul style="list-style-type: none"> ■ Skills required to design, develop, maintain and repair renewable energy technology solutions. ■ Coverage of a wide range of technologies. ■ Specialisation in either electrical or mechanical/civil engineering. 	CAREER POSSIBILITIES: <ul style="list-style-type: none"> ■ The clean energy industry is forecast to expand significantly over the next decade ■ Graduates will be able to manage available resources effectively to realise viable renewable energy projects to meet client needs. 	DURATION:	2 years
		TOTAL FEE:	AUD \$34,400
		COURSE CODE: CRICOS CODE:	20502 081723E

Articulation pathways are available from relevant Diploma and Advanced Diploma courses into accredited TAFE NSW undergraduate courses: see **page 29** for more information.



TAFE NSW DEGREE PATHWAYS

Advantages of a Degree pathway:

- Gives you two recognised qualifications, often in the same time it would take to complete the degree alone
- provides practical, career-focused skills to go with your degree
- allows you to begin your studies in a small-class setting, with individual access to teachers and support staff
- can lower the total cost of obtaining a degree.

TAFE NSW Degree Pathways

Course no./ National code	Course name	Institution	Degree program	Approx. study duration
APPLIED COMMERCE				
HE20515	Diploma of Applied Commerce (1 year)	TAFE NSW	Bachelor of Applied Commerce (Accounting and/or Financial Planning)	3 to 3.5 years
CHILDREN'S SERVICES				
25281 CHC50113	Diploma of Early Childhood Education and Care including Certificate III in Early Childhood Education and Care (1.5 years)	TAFE NSW	Bachelor of Early Childhood Education and Care (Birth -5)	4 to 4.5 years
DESIGN				
MSF50213	Diploma of Interior Design and Decoration including Certificate IV in Design (Interior Design Foundation) OR Certificate III in Design Fundamentals (1.5 - 2 years)	TAFE NSW	Bachelor of Design (Interior Design)	4 to 4.5 years
INFORMATION TECHNOLOGY				
RI0333 ICT50415	Diploma of Information Technology (Networking) including Certificate IV in Information Technology (Networking)	TAFE NSW	Bachelor of Information Technology (Network Security)	3.5 years

UNIVERSITY PARTNERS

TAFE NSW is an Education Business Partner of leading Australian universities. Agreements with these universities guarantees entry on successful completion of the TAFE NSW course.



CRICOS Provider Code: 00004G
acu.edu.au/international



CRICOS Provider Code: 00212K
canberra.edu.au/future-students/international-students



CRICOS Provider Code: 00005F
csu.edu.au/international



CRICOS Provider Code: 00109J
newcastle.edu.au/international



CRICOS Provider Code: 01241G
scu.edu.au/international



CRICOS Provider Code: 00099F
uts.edu.au/future-students/international

BE TRAINED BY
INDUSTRY LEADERS
AND EXPERTS.

**SUCCESSFUL
COMPLETION OF YOUR
TAFE NSW COURSE CAN
LEAD TO GUARANTEED
UNIVERSITY ENTRY.**

University Degree Pathways

Course no./ National code	Course name	Institution	Degree program	Approx. study duration
ACCOUNTING				
R11362/P11362 FNS50215	Diploma of Accounting including Certificate IV in Accounting (1 year)	AUSTRALIAN CATHOLIC UNIVERSITY (ACU)	Bachelor of Business Administration	3 years
			Bachelor of Commerce (Accounting)	3 to 3.5 years
		SOUTHERN CROSS UNIVERSITY (SCU)	Bachelor of Business (Accounting)	3 years
BUSINESS				
R17805 BSB50215	Diploma of Business including Certificate IV in Business (1 year)	AUSTRALIAN CATHOLIC UNIVERSITY (ACU)	Bachelor of Business Administration	3 years
		SOUTHERN CROSS UNIVERSITY (SCU)	Bachelor of Business in Hotel Management	3 years
EVENT MANAGEMENT				
RS11585 SIT50316	Diploma of Events includes co-enrolment in the Certificate III in Events (1 year)	SOUTHERN CROSS UNIVERSITY (SCU)	Bachelor of Business in Convention and Event Management	3 years
SS12168 SIT50416	Diploma of Hospitality and Events (1.5 years)		Bachelor of Business in Convention and Event Management	3.5 years
HOSPITALITY MANAGEMENT				
RN12168 SIT50416	Diploma of Hospitality Management (1 year)	SOUTHERN CROSS UNIVERSITY (SCU)	Bachelor of Business in Hotel Management	3 years

Course no./ National code	Course name	Institution	Degree program	Approx. study duration
HUMAN RESOURCES				
R11063 BSB50615	Diploma of Human Resources Management including Certificate IV in Human Resources (1 year)	AUSTRALIAN CATHOLIC UNIVERSITY (ACU)	Bachelor of Business Administration	3 years
INTERNATIONAL BUSINESS				
R17858 BSB50815	Diploma of International Business including Certificate IV in International Trade (1 year)	AUSTRALIAN CATHOLIC UNIVERSITY (ACU)	Bachelor of Business Administration	3 to 3.5 years
MANAGEMENT				
R17831 BSB51915	Diploma of Leadership and Management including Certificate IV in Leadership Management (1 year)	AUSTRALIAN CATHOLIC UNIVERSITY (ACU)	Bachelor of Business Administration	3 years
MARKETING AND COMMUNICATION				
R17856A BSB52415	Diploma of Marketing and Communication including Certificate IV in Marketing and Communication (1 year)	AUSTRALIAN CATHOLIC UNIVERSITY (ACU)	Bachelor of Business Administration	3 years
NURSING				
HLT54115	Diploma of Nursing (1.5 years)	UNIVERSITY OF TECHNOLOGY SYDNEY (UTS)	Bachelor of Nursing	3.5 years

Disclaimer: TAFE NSW to University pathways are accurate at the time of printing. (Source: credittransfer.tafensw.edu.au/) Please note that the details included are subject to change at short notice. This may have an impact on fees, locations, intakes and total durations. For updated information on the degree component, please visit the relevant university websites.



INTERNATIONAL COURSE LIST

Accounting				
Course	Duration	Course fee	Intake	Location
Accounting - Certificate IV Course Code: S10722 CRICOS Code: 076744J National Code: FNS40615	0.5 year	\$7,230	Feb	Shellharbour
				Ultimo
			Feb, Jul	Granville
				Meadowbank
				St Leonards
Accounting - Diploma Course Code: P11362 CRICOS Code: 088360D National Code: FNS50215	0.5 year	\$7,950	Jul	Shellharbour
			Feb, Jul	Granville
				Meadowbank
				St Leonards
				Ultimo
Accounting - Advanced Diploma Course Code: P11379 CRICOS Code: 088371A National Code: FNS60215 Prerequisite: Diploma of Accounting (P11362)	0.5 year	\$9,940	Feb, Jul	Meadowbank
Financial Planning - Diploma Course Code: R10735 CRICOS Code: 086452E National Code: FNS50615	0.5 year	\$9,300	Feb, Jul	Meadowbank
Applied Commerce - Diploma Course Code: HE20515 CRICOS Code: 094910F National Code: NOCODE	1 year	\$18,000	Feb	Meadowbank
			Feb, Jul	Granville
				Ultimo
Applied Commerce - Accounting Major - Bachelor Degree Course Code: HE20532 CRICOS Code: 094909K National Code: NOCODE	3 year	\$44,160	Feb, Jul	Granville
				Meadowbank
				St George
				Ultimo
Applied Commerce - Financial Planning Major - Bachelor Degree Course Code: HE20531 CRICOS Code: 094909K National Code: NOCODE	3 year	\$44,160	Feb, Jul	Granville
				Meadowbank
				St George
				Ultimo

AGED CARE				
Course	Duration	Course fee	Intake	Location
Individual Support (Ageing) - Certificate III Course Code: R11433 CRICOS Code: 090190K National Code: CHC33015	0.5 year	\$7,940	Feb, Jul	Bankstown
				Castle Hill
				Glendale
				Griffith
				Kingswood
				Meadowbank
				Newcastle
				Northern Beaches
				Port Macquarie
				Shellharbour
				Ultimo
Ageing Support - Certificate IV Course Code: RS18168 CRICOS Code: 090192G National Code: CHC43015	0.5 year	\$12,070	Feb, Jul	Wollongong
				Bankstown
				Kingswood
				Ultimo

Need further help? Please see your authorised representative or contact us at intadmissions@tafensw.edu.au

AGRICULTURAL (RURAL) STUDIES				
Course	Duration	Course fee	Intake	Location
Agriculture - Certificate III Course Code: AHC30116 CRICOS Code: 095303K National Code: AHC30116	1 year	\$10,710	Feb, Jul	Wollongbar
Agriculture - Certificate IV Course Code: AHC40116 CRICOS Code: 094573G National Code: AHC40116	1 year	\$11,820	Feb	Primary Industries Centre, Wagga Wagga
Agriculture - Diploma Course Code: AHC50116S CRICOS Code: 093761M National Code: AHC50116	1 year	\$13,620	Feb	Primary Industries Centre, Wagga Wagga
Organic Farming - Diploma Course Code: AHC51816 CRICOS Code: 095305G National Code: AHC51816	1 year	\$15,590	Feb	National Environment Centre, Thurgoona
Permaculture - Certificate IV Course Code: AHC42116 CRICOS Code: 094304F National Code: AHC42116	1 year	\$14,660	Feb	National Environment Centre, Thurgoona
Permaculture - Diploma Course Code: AHC52116 CRICOS Code: 094305E National Code: AHC52116 Prerequisite: Certificate IV in Permaculture (AHC42116)	1 year	\$15,990	Feb	National Environment Centre, Thurgoona

ANIMAL CARE				
Course	Duration	Course fee	Intake	Location
Captive Animals - Certificate III Course Code: ACM30317 CRICOS Code: 097372C National Code: ACM30317	0.5 year	\$8,670	Feb, Jul	Ultimo
Captive Animals - Certificate III Course Code: ACM30317S CRICOS Code: 097372C National Code: ACM30317	1 year	\$8,670	Jul	Wollongbar
			Feb, Jul	Kingscliff
				Richmond
Veterinary Nursing - Certificate IV Course Code: 11680 CRICOS Code: 081100C National Code: ACM40412	1 year	\$11,810	Jul	Kingscliff
			Feb	Scone
				Ultimo
			Feb, Jul	Kurri Kurri
				Richmond

APPLIED SCIENCE				
Course	Duration	Course fee	Intake	Location
Laboratory Techniques - Certificate IV Course Code: S19412 CRICOS Code: 090896J National Code: MSL40116	0.5 year	\$15,340	Feb, Jul	Granville
Laboratory Techniques - Certificate IV Course Code: R19412 CRICOS Code: 090896J National Code: MSL40116	1 year	\$15,340	Feb, Jul	Ultimo
Laboratory Technology (Food Testing) - Diploma Course Code: R19418 CRICOS Code: 090900G National Code: MSL50116	1.5 year	\$26,080	Feb, Jul	Ultimo
Laboratory Technology (Pathology Testing) - Diploma Course Code: RS19419 CRICOS Code: 090900G National Code: MSL50116	1.5 year	\$26,080	Feb, Jul	Granville
				Ultimo

ARCHITECTURAL STUDIES				
Course	Duration	Course fee	Intake	Location
Building Design - Diploma Course Code:CPP50911 CRICOS Code:079001B National Code:CPP50911	1.5 year	\$21,700	Feb, Jul	Ultimo
Building Design - Diploma Course Code:10771 CRICOS Code:079001B National Code:CPP50911	2 year	\$28,933	Feb	Granville
				Hornsby
			Feb, Jul	Wollongong
				Nirimba

For the latest course information, visit tafensw.edu.au/international

AUTOMOTIVE				
Course	Duration	Course fee	Intake	Location
Mobile Plant Technology - Certificate III Course Code: AUR31216 CRICOS Code: 093769C National Code: AUR31216	1.5 year	\$19,530	Feb	Kurri Kurri

BEAUTY SERVICES				
Course	Duration	Course fee	Intake	Location
Beauty Services - Certificate III Course Code: RS18932 CRICOS Code: 090508D National Code: SHB30115	0.5 year	\$7,760	Feb, Jul	Mount Druitt Newcastle
Beauty Therapy - Diploma Course Code: RN18934 CRICOS Code: 089070F National Code: SHB50115	1 year	\$16,560	Feb	Mount Druitt
			Feb, Jul	Liverpool
				Port Macquarie
				Ultimo
				Wollongbar
Screen and Media (Specialist Makeup Services) - Diploma Course Code: CUA51015SM CRICOS Code: 093210J National Code: CUA51015	1 year	\$14,830	Feb, Jul	Ultimo

BUILDING AND CONSTRUCTION				
Course	Duration	Course fee	Intake	Location
Bricklaying/Blocklaying - Certificate III Course Code: 10210 CRICOS Code: 076741A National Code: CPC30111	1 year	\$15,860	Feb Feb, Jul	Kingscliff Granville Nirimba
Carpentry - Certificate III Course Code: 10211 CRICOS Code: 075832F National Code: CPC30211	1 year	\$16,860	Feb, Jul	Kingscliff Nirimba St Leonards
Painting and Decorating - Certificate III Course Code: 10215 CRICOS Code: 079497F National Code: CPC30611	1 year	\$15,210	Feb, Jul	Granville
Wall and Floor Tiling - Certificate III Course Code: S10222 CRICOS Code: 076742M National Code: CPC31311	1 year	\$15,980	Feb, Jul	Macquarie Fields
Building and Construction (Building) - Certificate IV Course Code: 19734 CRICOS Code: 072914F National Code: CPC40110	1 year	\$14,250	Feb	Granville
			Feb, Jul	Kingscliff
				Nirimba
				Northern Beaches
				Ultimo
Building and Construction (Building) - Diploma Course Code: S19735 CRICOS Code: 072913G National Code: CPC50210 Prerequisite: Certificate IV in Building and Construction (Building) (19734)	1 year	\$20,740	Feb Feb, Jul	Granville Nirimba Ultimo

Need further help? Please see your authorised representative or contact us at intadmissions@tafensw.edu.au

BUSINESS AND MANAGEMENT				
Course	Duration	Course fee	Intake	Location
Business - Certificate IV Course Code: R11740 CRICOS Code: 089581E National Code: BSB40215	0.5 year	\$6,030	Feb	Liverpool
			Feb, Apr, Jul, Sep	Ultimo
			Feb, Jul	Granville
				Meadowbank Newcastle
Business - Diploma Course Code: R17805 CRICOS Code: 087148E National Code: BSB50215 Prerequisite: Certificate IV in Business (R11740)	0.5 year	\$6,820	Feb, Jul	Liverpool Granville Meadowbank Newcastle Ultimo
Business - Advanced Diploma Course Code: R17806 CRICOS Code: 087460G National Code: BSB60215 Prerequisite: Diploma of Business (R17805)	0.5 year	\$7,740	Feb, Jul	Granville Meadowbank Newcastle Ultimo
Business - Bachelor Degree Course Code: HE20514 CRICOS Code: 092518G National Code: NOCODE	3 year	\$44,160	Feb, Jul	Granville St Leonards Ultimo
Business Administration - Certificate III Course Code: R11735 CRICOS Code: 092101M National Code: BSB30415	0.5 year	\$6,220	Feb	Bega Liverpool
			Feb, Jul	Blacktown Coffs Harbour Granville Port Macquarie Ultimo
				Liverpool Wollongong
				Bega Blacktown Kingscliff Newcastle Ultimo
			Feb	Liverpool
			Feb, Jul	Blacktown Ultimo
Business Administration - Certificate IV Course Code: R17808 CRICOS Code: 089580F National Code: BSB40515	0.5 year	\$6,380	Feb, Jul	Liverpool Wollongong Bega Blacktown Kingscliff Newcastle Ultimo
Business Administration - Diploma Course Code: R17809 CRICOS Code: 087285G National Code: BSB50415 Prerequisite: Certificate IV in Business Administration (R17808)	0.5 year	\$7,010	Feb, Jul	Liverpool Blacktown Ultimo
International Trade - Certificate IV Course Code: R17895 CRICOS Code: 092098A National Code: BSB41115	0.5 year	\$5,980	Feb, Jul	Meadowbank Ultimo
International Business - Diploma Course Code: R17858 CRICOS Code: 087343B National Code: BSB50815 Prerequisite: Certificate IV in International Trade (R17895)	0.5 year	\$7,470	Feb, Jul	Meadowbank Ultimo
Leadership and Management - Certificate IV Course Code: R11742 CRICOS Code: 089341K National Code: BSB42015	0.5 year	\$6,940	Feb Feb, Jul	Granville Meadowbank Newcastle

For the latest course information, visit tafensw.edu.au/international

BUSINESS AND MANAGEMENT (CONTINUED)				
Course	Duration	Course fee	Intake	Location
Leadership and Management - Diploma Course Code: R17831 CRICOS Code: 089340M National Code: BSB51915 Prerequisite: Certificate IV in Leadership and Management (R11742)	0.5 year	\$9,100	Feb, Jul	Granville
				Meadowbank
				St George
Leadership and Management - Advanced Diploma Course Code: R17832 CRICOS Code: 089339D National Code: BSB61015 Prerequisite: Diploma of Leadership and Management (R17831)	0.5 year	\$9,310	Feb, Jul	St George
New Small Business - Certificate IV Course Code: R17824 CRICOS Code: 090353G National Code: BSB42615	0.5 year	\$6,440	Feb, Jul	Meadowbank
				Ultimo

CHILDREN’S SERVICES

Course	Duration	Course fee	Intake	Location
Early Childhood Education and Care - Certificate III Course Code: 25272 CRICOS Code: 081612A National Code: CHC30113	0.5 year	\$7,910	Feb	Port Macquarie
			Feb, Jul	Bankstown
				Coffs Harbour Education (CHEC)
				Glendale
				Kingscliff
				Meadowbank
				Nirimba
				Ourimbah
				Petersham
				Randwick
				St Leonards
				Sutherland/Loftus
				Wollongbar
				Wollongong
Early Childhood Education and Care - Diploma Course Code: 25281 CRICOS Code: 081611B National Code: CHC50113 Prerequisite: Certificate III in Early Childhood Education and Care (25272)	1 year	\$14,010	Feb, Jul	Bankstown
				Glendale
				Meadowbank
				Nirimba
				Ourimbah
				Petersham
				Randwick
				St Leonards
				Sutherland/Loftus
				Wollongong
Early Childhood Education and Care - Diploma Course Code: S25281 CRICOS Code: 081611B National Code: CHC50113	1.5 year	\$21,920	Feb	Wollongong
			Feb, Jul	Coffs Harbour Education (CHEC)
				Port Macquarie
				Wollongbar
Early Childhood Education and Care (Birth-5) - Bachelor Degree Course Code: 20510 CRICOS Code: 075653J National Code: NOCODE	4 year	\$52,320	Feb	Shellharbour
			Feb, Jul	Glendale
				Nirimba
				Randwick

Need further help? Please see your authorised representative or contact us at intadmissions@tafensw.edu.au

COMMUNITY SERVICES

Course	Duration	Course fee	Intake	Location
Community Services - Certificate IV Course Code: R18701 CRICOS Code: 090193G National Code: CHC42015	1 year	\$11,560	JUL	Port Macquarie
			Feb	Hamilton
				Ourimbah
			Feb, Jul	Coffs Harbour Education (CHEC)
				Meadowbank
				Northern Beaches
				Ultimo
Community Services - Diploma Course Code: R11454 CRICOS Code: 089854G National Code: CHC52015 Prerequisite: Certificate IV in Community Services Work [(R18701)]	1 year	\$12,960	Feb	Hamilton
				Meadowbank
				Northern Beaches
				Ourimbah
			Feb, Jul	Port Macquarie
				Wollongong
				Bankstown
				Nirimba
				Ultimo



“TAFE NSW taught me hands on skills that made me job ready. The teachers were very supportive and always provided more assistance to students if required.”

DENTAL STUDIES

Course	Duration	Course fee	Intake	Location
Dental Assisting - Certificate IV Course Code: R16144 CRICOS Code: 092353B National Code: HLT45015	1 year	\$12,050	Feb, Jul	Kingswood
				Randwick
Dental Technology - Diploma Course Code: R16125 CRICOS Code: 092354A National Code: HLT55115	2 year	\$40,130	Feb, Jul	Randwick

For the latest course information, visit tafensw.edu.au/international

DESIGN				
Course	Duration	Course fee	Intake	Location
Design Fundamentals - Certificate III Course Code: R10408 CRICOS Code: 090401D National Code: CUA30715	0.5 year	\$7,340	Feb, Jul	Kingswood
Design Fundamentals (Fashion Design) - Certificate III Course Code: RS10408 CRICOS Code: 090401D National Code: CUA30715	0.5 year	\$7,340	Feb, Jul	Ultimo
Design - Certificate IV Course Code: R10412 CRICOS Code: 090421M National Code: CUA40715	1 year	\$9,000	Feb	Port Macquarie
Design (Multi Discipline) - Certificate IV Course Code: CUA40715DM CRICOS Code: 090421M National Code: CUA40715	0.5 year	\$9,000	Feb, Jul	Design Centre Enmore
Design (Graphic Design) - Certificate IV Course Code: R11412 CRICOS Code: 090421M National Code: CUA40715	0.5 year	\$9,000	Feb, Jul	Design Centre Enmore
				Hornsby
				St Leonards
Graphic Design - Diploma Course Code: R10418 CRICOS Code: 090462B National Code: CUA50715 Prerequisite: Certificate IV in Graphic Design (R11412)	1 year	\$12,850	Feb	Kingscliff
				Port Macquarie
			Feb, Jul	Design Centre Enmore
				Hornsby
				Kingswood
Graphic Design (Illustration) - Diploma Course Code: CUA50715 CRICOS Code: 090462B National Code: CUA50715	1 year	\$12,850	Feb, Jul	St Leonards
				Design Centre Enmore
Graphic Design - Advanced Diploma Course Code: CUA60315A CRICOS Code: 094260B National Code: CUA60315 Prerequisite: Diploma of Graphic Design (R10418)	1 year	\$12,060	Feb, Jul	Enmore
Design (Industrial Design) - Certificate IV Course Code: R12077 CRICOS Code: 090421M National Code: CUA40715	0.5 year	\$9,000	Feb, Jul	Design Centre Enmore
Industrial Design - Diploma Course Code: S11056 CRICOS Code: 082887K National Code: 10220NAT	2 year	\$21,400	Feb, Jul	Ourimbah
Design (Interior Design Foundation) - Certificate IV Course Code: CUA40715 CRICOS Code: 090421M National Code: CUA40715	0.5 year	\$9,000	Feb	Design Centre Enmore
Interior Design and Decoration - Diploma Course Code: MSF50213 CRICOS Code: 084394D National Code: MSF50213 Prerequisite: Certificate IV in Design (Interior Design Foundation) (CUA40715) OR Certificate IV in Design (Multi Discipline) (CUA40715DM)	1.5 year	\$17,140	Feb, Jul	Design Centre Enmore
Interior Design and Decoration - Diploma Course Code: S14103 CRICOS Code: 084394D National Code: MSF50213 Prerequisite: Certificate III in Design Fundamentals (R10408)	1 year	\$17,140	Feb, Jul	Kingswood
Interior Design - Advanced Diploma Course Code: S14105 CRICOS Code: 084367G National Code: MSF60113 Prerequisite: Diploma of Interior Design and Decoration (MSF50213)	1 year	\$27,520	Feb	Design Centre Enmore
Design (Interior Design) - Bachelor Degree Course Code: 20501 CRICOS Code: 071917M National Code: NOCODE	3 year	\$58,800	Feb	Design Centre Enmore

Need further help? Please see your authorised representative or contact us at: intadmissions@tafensw.edu.au

DIGITAL MEDIA				
Course	Duration	Course fee	Intake	Location
Screen and Media - Certificate III Course Code: 31015 CRICOS Code: 090382B National Code: CUA31015	0.5 year	\$6,750	Feb,	Kingscliff
			Feb, Jul	Kingswood
Screen and Media - Certificate IV Course Code: RP19236 CRICOS Code: 093209B National Code: CUA41215	0.5 year	\$12,170	Feb, Jul	St Leonards
Screen and Media - Diploma Course Code: RP19237 CRICOS Code: 093210J National Code: CUA51015 Prerequisite: Certificate IV in Screen and Media (RP19236)	0.5 year	\$14,830	Feb, Jul	St Leonards
Screen and Media - Diploma Course Code: R19237 CRICOS Code: 093210J National Code: CUA51015	1 year	\$14,830	Feb	Kingscliff
			Feb, Jul	Kingswood
				Randwick
3D Art and Animation - Bachelor Degree Course Code: 20520 CRICOS Code: 075731M National Code: NOCODE	3 year	\$63,600	Feb	Design Centre Enmore

ENGINEERING STUDIES				
Course	Duration	Course fee	Intake	Location
Civil Construction Design - Diploma Course Code: RS14171 CRICOS Code: 089828J National Code: R1150515	1.5 year	\$16,470	Feb, Jul	Ultimo
Civil Construction Design - Advanced Diploma Course Code: R14181 CRICOS Code: 089830D National Code: R1160515 Prerequisite: Diploma of Civil Construction Design (RS14171)	0.5 year	\$11,770	Feb, Jul	Ultimo
Electronics and Communications - Certificate IV Course Code: UEE40711 CRICOS Code: 096762G National Code: UEE40711	1.5 year	\$22,290	Feb	Ultimo
Electronics and Communications Engineering - Diploma Course Code: UEE50511 CRICOS Code: 078943G National Code: UEE50511 Prerequisite: Certificate IV in Electronics and Communications (UEE40711)	0.5 year	\$7,430	Jul	Ultimo
Electronics and Communications Engineering - Diploma Course Code: 20263 CRICOS Code: 078943G National Code: UEE50511	2 year	\$29,720	Feb, Jul	Granville
Engineering - Technical - Diploma Course Code: 11775 CRICOS Code: 081567A National Code: MEM50212	1 year	\$13,700	Feb, Jul	Ultimo
Engineering Mechanical - Advanced Diploma Course Code: S11778 CRICOS Code: 081835G National Code: MEM60112	1.5 year	\$22,550	Feb, Jul	Granville
				Ultimo
Engineering Technology - Electrical - Advanced Diploma Course Code: 20281 CRICOS Code: 078942J National Code: UEE62111	2 year	\$27,000	Feb, Jul	Granville
				Ultimo
Engineering Technology - Electronics - Advanced Diploma Course Code: 20278 CRICOS Code: 078941K National Code: UEE61711	2 year	\$25,010	Feb	Ultimo
Applied Engineering (Renewable Energy Technologies) - Associate Degree Course Code: 20502 CRICOS Code: 081723E National Code :NOCODE	2 year	\$34,400	Feb, Jul	Ultimo

ENVIRONMENTAL MANAGEMENT				
Course	Duration	Course fee	Intake	Location
Natural Area Restoration - Certificate III Course Code: AHC31716 CRICOS Code: 093767E National Code: AHC31716	1 year	\$11,400	Feb, Jul	Wentworth Falls
Conservation and Land Management - Diploma Course Code: AHC51116 CRICOS Code: 093766F National Code: AHC51116	1 year	\$15,760	Feb	Ryde

For the latest course information, visit tafensw.edu.au/international

ENVIRONMENTAL TESTING				
Course	Duration	Course fee	Intake	Location
Environmental Monitoring and Technology - Diploma Course Code: R20098 CRICOS Code: 093063D National Code: MSS50216	1 year	\$13,990	Feb	Ryde
Laboratory Technology (Biological and Environmental Testing) - Diploma Course Code: 19415A CRICOS Code: 090900G National Code: MSL50116	1.5 year	\$26,080	Feb, Jul	Granville
				Ultimo

EQUINE STUDIES				
Course	Duration	Course fee	Intake	Location
Racing (Advanced Stablehand) - Certificate III Course Code: 18403 CRICOS Code: 068330J National Code: RGR30208	1 year	\$12,010	Feb, Jul	Richmond
Racing (Trackrider) - Certificate III Course Code: 18302 CRICOS Code: 065809K National Code: RGR30108	1 year	\$12,010	Feb, Jul	Richmond

FASHION TECHNOLOGY & THEATRE COSTUME				
Course	Duration	Course fee	Intake	Location
Applied Fashion Design & Technology - Certificate III Course Code: MST30816 CRICOS Code: 095304J National Code: MST30816	0.5 year	\$12,980	Feb	Ultimo
			Feb, Jul	Wollongbar
Applied Fashion Design and Merchandising (Design and Product Development) - Diploma Course Code: MST50116A CRICOS Code: 094264J National Code: MST50116 Prerequisite: Certificate III in Applied Fashion Design & Technology (MST30816)	1 year	\$30,000	Jul	Wollongbar
			Feb, Jul	Ultimo
Design (Fashion Design) - Certificate IV Course Code: 11712A CRICOS Code: 090421M National Code: CUA40715 Prerequisite: Certificate III in Design Fundamentals (Fashion Design) (RS10408)	0.5 year	\$9,000	Feb	Ultimo
Applied Fashion Design and Merchandising - Diploma Course Code: MST50116S CRICOS Code :094264J National Code: MST50116	1.5 year	\$30,000	Feb	Newcastle
			Feb, Jul	Wollongbar
Fashion Design - Bachelor Degree Course Code: 20506 CRICOS Code: 084563C National Code: NOCODE	3 year	\$63,600	Feb	Ultimo

FINE ARTS				
Course	Duration	Course fee	Intake	Location
Visual Arts - Diploma Course Code: R10416 CRICOS Code: 090444D National Code: CUA51115	1 year	\$11,880	Feb	Coffs Harbour Education (CHEC)
				Hunter Street
				Meadowbank
			Feb, Jul	Kingswood
Visual Arts - Advanced Diploma Course Code: R10420 CRICOS Code: 090491G National Code: CUA60715 Prerequisite: Diploma of Visual Arts (R10416)	1 year	\$9,790	Feb	St George
			Feb, Jul	Meadowbank
				Hunter Street
				Kingswood

HAIRDRESSING				
Course	Duration	Course fee	Intake	Location
Hairdressing - Certificate III Course Code: R10436 CRICOS Code: 093246G National Code: SHB30416	1 year	\$12,850	Feb, Jul	Bankstown
				Meadowbank
				St Leonards
				Ultimo

Need further help? Please see your authorised representative or contact us at intadmissions@tafensw.edu.au

HEALTH SERVICES				
Course	Duration	Course fee	Intake	Location
Optical Dispensing - Certificate IV Course Code: HLT478 CRICOS Code: 090189C National Code: HLT47815	1 year	\$10,680	Feb, Jul	Kingswood

HORTICULTURE				
Course	Duration	Course fee	Intake	Location
Floristry - Certificate III Course Code: R20054 CRICOS Code: 089585A National Code: SFL30115	1 year	\$12,300	Feb	Ultimo
			Feb, Jul	Ryde
Horticulture - Certificate III Course Code: AHC30716 CRICOS Code: 093764G National Code: AHC30716	1 year	\$11,690	Feb	Wollongbar
			Feb, Jul	Coffs Harbour Education (CHEC)
				Ryde
				Wentworth Falls
Horticulture - Diploma Course Code: AHC50416S CRICOS Code: 093772G National Code: AHC50416	1.5 year	\$16,500	Feb, Jul	Ryde
Landscape Design - Diploma Course Code: AHC50616S CRICOS Code: 093762K National Code: AHC50616	1.5 year	\$24,000	Feb, Jul	Ryde
Landscape Design - Diploma Course Code: AHC50616 CRICOS Code: 093762K National Code: AHC50616	2 year	\$24,000	Feb, Jul	Richmond

HOSPITALITY				
Course	Duration	Course fee	Intake	Location
Allied Health Assistance (Nutrition and Dietetics) - Certificate IV Course Code: 43015 CRICOS Code: 093216C National Code: HLT43015	0.5 year	\$10,140	Feb, Jul	Ultimo
Commercial Cookery - Certificate III Course Code: R12161 CRICOS Code: 092356K National Code: SIT30816	1 year	\$16,810	Feb	Wollongong
			Feb, Jul	Campbelltown
				Hamilton
				Kingswood
				Mount Druitt
				Port Macquarie
				Ryde
Commercial Cookery - Certificate IV Course Code: RN12162 CRICOS Code: 092357J National Code: SIT40516	1 year	\$18,870	Feb	Wollongbar
			Feb, Jul	Kingscliff
				Hamilton
				Kingswood
				Mount Druitt
				Northern Beaches
				Port Macquarie
				Ryde
				Ultimo
				Wollongbar
Hospitality - Certificate III Course Code: R12166 CRICOS Code: 091447D National Code: SIT30616	0.5 year	\$7,460	Feb	Wollongbar
			Feb, Jul	Port Macquarie
Hospitality - Certificate IV Course Code: RS12167 CRICOS Code: 090956B National Code: SIT40416	0.5 year	\$8,540	Feb, Jul	Kingswood
Hospitality - Certificate IV Course Code: R12167 CRICOS Code: 090956B National Code: SIT40416	1 year	\$8,540	Feb, Jul	Orange
				Port Macquarie
				Wollongbar

For the latest course information, visit tafensw.edu.au/international

HOSPITALITY (CONTINUED)				
Course	Duration	Course fee	Intake	Location
Hospitality Management - Diploma Course Code: RN12168 CRICOS Code: 090987F National Code: SIT50416	1 year	\$14,250	Feb	Coffs Harbour Education (CHEC) Wollongong
			Feb, Apr, Jul, Sep	Ultimo
			Feb, Jul	Campbelltown
				Hamilton
				Kingscliff
				Kingswood
				Ourimbah
				Port Macquarie
				Ryde
				Wollongbar
			Feb, Jul	Campbelltown
				Kingswood
				Ultimo
Hospitality Management - Advanced Diploma Course Code: RS12169 CRICOS Code: 091143J National Code: SIT60316 Prerequisite: Diploma of Hospitality Management (RN12168)	0.5 year	\$7,120	Feb, Jul	Kingswood Ultimo
Hospitality Management - Advanced Diploma Course Code: RI2169 CRICOS Code: 091143J National Code: SIT60316	1.5 year	\$20,910	Feb, Apr, Jul, Sep Feb, Jul	Ultimo Ryde
Hospitality and Events - Diploma Course Code: SS12168 CRICOS Code: 090987F National Code: SIT50416	1.5 year	\$21,740	Feb, Jul	Ultimo
Hospitality Management and Certificate III in Commercial Cookery - Diploma Course Code: RC12168 CRICOS Code: 090987F National Code: SIT50416	1.5 year	\$23,330	Feb, Apr, Jul, Sep	Ultimo
			Feb, Jul	Kingswood
				Northern Beaches
				Ryde
				Wollongong
Hospitality Management and Certificate III in Commercial Cookery - Diploma Course Code: RS12168 CRICOS Code: 090987F National Code: SIT50416	2 year	\$23,330	Feb, Jul	Campbelltown
				Hamilton
				Kingscliff
				Port Macquarie
				Wollongbar
Hospitality includes Certificate IV in Commercial Cookery - Diploma Course Code: RT12168 CRICOS Code: 090987F National Code: SIT50416	2 year	\$28,700	Feb	Wollongbar
			Feb, Jul	Hamilton
				Port Macquarie
Hospitality Management and Certificate III in Commercial Cookery - Advanced Diploma Course Code: RT12169 CRICOS Code: 091143J National Code: SIT60316	2 year	\$27,940	Feb, Jul	Wollongong
Hospitality Management and Certificate IV Commercial Cookery - Advanced Diploma Course Code: RC12169 CRICOS Code: 091143J National Code: SIT60316	2 year	\$32,930	Feb, Apr, Jul, Sep	Ultimo
			Feb, Jul	Kingswood
				Ryde
Patisserie - Certificate III Course Code: SIT31016S CRICOS Code: 094258G National Code: SIT31016	0.5 year	\$12,910	Feb	Ryde
Patisserie - Certificate IV Course Code: SIT40716 CRICOS Code: 094259F National Code: SIT40716	1 year	\$18,860	Feb, Jul	Hamilton
				Ryde
Hospitality Management and Certificate III in Patisserie - Diploma Course Code: RP12168 CRICOS Code: 090987F National Code: SIT50416	1.5 year	\$27,160	Feb, Jul	Ryde
Retail Baking (Combined) - Certificate III Course Code: 10039 CRICOS Code: 074484G National Code: FDF30710	1 year	\$14,610	Feb	Ryde
			Feb, Jul	Hamilton
				Ultimo

Need further help? Please see your authorised representative or contact us at intadmissions@tafensw.edu.au

HSC, TERTIARY PREPARATION & GENERAL EDUCATION				
Course	Duration	Course fee	Intake	Location
Pathways to Further Education - Certificate III Course Code: 29602 CRICOS Code: 083153G National Code: 10223NAT	0.5 year	\$5,830	Feb	Belmont
				Cessnock
				Glendale
				Gosford
				Maitland
				Newcastle
				Wyong
			Feb, Jul	Kingscliff
				Port Macquarie
				Wollongbar
				Blacktown
				St George
Enterprise and Career Skills - Certificate IV Course Code: 10587NAT CRICOS Code: 096143B National Code: 10587NAT	0.5 year	\$6,730	Feb, Jul	Blacktown St George
Tertiary Preparation - Certificate IV Course Code: 29603 CRICOS Code: 082381C National Code: 10224NAT	1 year	\$8,420	Feb	Blacktown
				Maitland
				Newcastle
				Port Macquarie
				Ultimo
				Wollongbar
				Wyong
			Feb, Jul	Murwillumbah

HUMAN RESOURCES				
Course	Duration	Course fee	Intake	Location
Human Resources - Certificate IV Course Code: R11061 CRICOS Code: 089586M National Code: BSB41015	0.5 year	\$6,620	Feb, Jul	Meadowbank Ultimo
Human Resource Management - Diploma Course Code: R11063 CRICOS Code: 087315F National Code: BSB50615 Prerequisite: Certificate IV in Human Resources (R11061)	0.5 year	\$8,030	Feb, Jul	Meadowbank
				Newcastle
				Ultimo
Management (Human Resources) - Advanced Diploma Course Code: R17843 CRICOS Code: 087601M National Code: BSB60915 Prerequisite: Diploma of Human Resource Management (R11063)	0.5 year	\$7,740	Feb, Jul	Meadowbank
				Newcastle
				Ultimo

INFORMATION TECHNOLOGY				
Course	Duration	Course fee	Intake	Location
Digital Media and Interactive Games (Arts) - Certificate IV Course Code: ICT40915 CRICOS Code: 091900K National Code: ICT40915	0.5 year	\$8,190	Feb, Jul	St Leonards
Digital Media Technologies (Interactive Media) - Certificate IV Course Code: R10322 CRICOS Code: 091899J National Code: ICT40815	1 year	\$10,000	Feb	Port Macquarie
Digital Media and Interactive Games (Programming) - Certificate IV Course Code: RS10324 CRICOS Code: 091900K National Code: ICT40915	0.5 year	\$8,190	Feb, Jul	St Leonards
Digital and Interactive Games (Programming) - Diploma Course Code: R10328 CRICOS Code: 086624A National Code: ICT50215	0.5 year	\$9,470	Feb, Jul	St Leonards
Database Design and Development - Diploma Course Code: R10334 CRICOS Code: 086666B National Code: ICT50515	0.5 year	\$10,600	Feb, Jul	St George
Information Technology - Certificate IV Course Code: RS10309 CRICOS Code: 089575C National Code: ICT40115	0.5 year	\$9,670	Feb	Miller

For the latest course information, visit tafensw.edu.au/international

Information Technology (Continued)				
Course	Duration	Course fee	Intake	Location
Information Technology - Diploma Course Code: R10327 CRICOS Code: 086600J National Code: ICT50115	0.5 year	\$11,800	Feb, Jul	Miller
Information, Digital Media and Technology (Network Administration) - Certificate III Course Code: R10305 CRICOS Code: 091414B National Code: ICT30115	0.5 year	\$8,420	Feb	Meadowbank
			Feb, Jul	Blacktown
				Kingscliff
				Mount Druitt
				Port Macquarie
				St Leonards
				Wollongbar
Information Technology Networking - Certificate IV Course Code: RS10316 CRICOS Code: 086556G National Code: ICT40415 Prerequisite: Certificate III in Information, Digital Media and Technology (Network Administration) (R10305)	0.5 year	\$11,000	Feb	Lidcombe
			Feb, Jul	Blacktown
				Meadowbank
				Mount Druitt
				St Leonards
				Wollongbar
Information Technology Networking - Certificate IV Course Code: R10316 CRICOS Code: 086556G National Code: ICT40415	1 year	\$11,000	Feb	Wollongong West
			Feb, Jul	Kingscliff
				Ultimo
Information Technology Networking - Diploma Course Code: R10333 CRICOS Code: 086637G National Code: ICT50415 Prerequisite: Certificate IV in Information Technology Networking (R10316)	0.5 year	\$13,350	Feb	Kingscliff
				Port Macquarie
				Wollongbar
			Feb, Jul	Blacktown
				Lidcombe
				Meadowbank
				Mount Druitt
				St Leonards
				Ultimo
				Wollongong West
			Jul	Lidcombe
			Feb	Kingscliff
			Feb, Jul	Meadowbank
				Ultimo
Information Technology (Network Security) - Advanced Diploma Course Code: R10341 CRICOS Code: 086736D National Code: ICT60215 Prerequisite: Diploma of Information Technology Networking (R10333)	0.5 year	\$9,290		
Information Technology (Network Security) - Bachelor Degree Course Code: 20524 CRICOS Code: 075370J National Code: NOCODE	3 year	\$58,320	Feb, Jul	Meadowbank
Information Technology Support (Database) - Certificate IV Course Code: R10310 CRICOS Code: 089576B National Code: ICT40215	0.5 year	\$10,310	Feb, Jul	St George
Information Technology Support (Service Desk) - Certificate IV Course Code: RS10312 CRICOS Code: 089576B National Code: ICT40215	0.5 year	\$10,310	Feb, Jul	St Leonards
Information Technology Systems Administration - Diploma Course Code: R10332 CRICOS Code: 086627J National Code: ICT50315 Prerequisite: Certificate IV in Information Technology Networking (RS10316)	0.5 year	\$10,330	Feb, Jul	Mount Druitt

Need further help? Please see your authorised representative or contact us at intadmissions@tafensw.edu.au

Information Technology (Continued)				
Course	Duration	Course fee	Intake	Location
Programming - Certificate IV Course Code: RS10317 CRICOS Code: 089577A National Code: ICT40515	0.5 year	\$10,400	Feb	Hornsby
			Feb, Jul	Granville
				Mount Druitt
				Petersham
Software Development - Diploma Course Code: R10336 CRICOS Code: 086687G National Code: ICT50715 Prerequisite: Certificate IV in Programming (RS10317)	0.5 year	\$10,010	Feb	Hornsby
				Mount Druitt
				Petersham
Information, Digital Media and Technology (Web Technologies) - Certificate III Course Code: R10307 CRICOS Code: 091414B National Code: ICT30115	0.5 year	\$8,420	Jul	Murwillumbah
			Feb, Jul	Blacktown
				Lismore
				Mount Druitt
Web Based Technologies - Certificate IV Course Code: RS10315 CRICOS Code: 089578M National Code: ICT40315	0.5 year	\$9,100	Feb, Jul	Blacktown
				Granville
				Hornsby
				St Leonards
				Ultimo
Website Development - Diploma Course Code: RS10335 CRICOS Code: 086672D National Code: ICT50615	1 year	\$13,000	Feb	Kingscliff
			Feb, Jul	Hornsby
				St Leonards
				Ultimo
Website Development - Diploma Course Code: RP10335 CRICOS Code: 086672D National Code: ICT50615 Prerequisite: Certificate IV in Web Based Technologies (RS10315)	0.5 year	\$13,000	Jul	Granville
			Feb1	Wollongbar
			Feb, Jul	Blacktown
Information Technology (Data Infrastructure Engineering) - Bachelor Degree Course Code: HE20525 CRICOS Code: 095515J National Code: NOCODE	3 year	\$58,320	Feb, Jul	Meadowbank

Interpreting				
Course	Duration	Course fee	Intake	Location
Interpreting (Mandarin) - Diploma Course Code: R11692M CRICOS Code: 092355M National Code: PSP50916	0.5 year	\$8,240	Feb, Jul	Meadowbank

Marine Engineering				
Course	Duration	Course fee	Intake	Location
Maritime Operations (Engineer Watchkeeper) - Diploma Course Code: MAR50115 CRICOS Code: 093648A National Code: MAR50115	0.5 year	\$12,470	Feb, Jul	Newcastle
Maritime Operations (Marine Engineering Class 1) - Advanced Diploma Course Code: R20824 CRICOS Code: 086370G National Code: MAR60215 Prerequisite: Advanced Diploma of Maritime Operations (Marine Engineering Class 2) (R20822)	1 year	\$14,000	Feb, Jul	Newcastle
Maritime Operations (Marine Engineering Class 2) - Advanced Diploma Course Code: R20822 CRICOS Code: 086368A National Code :MAR60115 Prerequisite: Diploma of Maritime Operations (Engineer Watchkeeper) (MAR50115)	1 year	\$14,210	Feb, Jul	Newcastle

For the latest course information, visit tafensw.edu.au/international

MARITIME OPERATIONS				
Course	Duration	Course fee	Intake	Location
Maritime Operations (Watchkeeper Deck) - Diploma Course Code: R20819 CRICOS Code: 088805B National Code: MAR50315	1 year	\$19,670	Feb, Jul	Newcastle

MARKETING AND ADVERTISING				
Course	Duration	Course fee	Intake	Location
Marketing and Communication - Certificate IV Course Code: R17855A CRICOS Code: 093214E National Code: BSB42415	0.5 year	\$6,680	Feb, Jul	Meadowbank Newcastle
Marketing and Communication - Diploma Course Code: R17856A CRICOS Code: 093215D National Code: BSB52415 Prerequisite: Certificate IV in Marketing and Communication (R17855A)	0.5 year	\$13,220	Feb, Jul	Meadowbank
Marketing and Communication - Diploma Course Code: R17856B CRICOS Code: 093215D National Code: BSB52415	1 year	\$13,220	Feb, Jul	Ultimo
Marketing and Communication - Advanced Diploma Course Code: R17857A CRICOS Code: 093211G National Code: BSB61315 Prerequisite: Diploma of Marketing and Communication (R17856A or R17856B)	0.5 year	\$9,210	Feb, Jul	Ultimo

MASSAGE THERAPY				
Course	Duration	Course fee	Intake	Location
Massage Therapy - Certificate IV Course Code: HLT42015 CRICOS Code: 094235C National Code: HLT42015	1 year	\$9,610	Feb, Jul	Meadowbank
Remedial Massage - Diploma Course Code: R18277 CRICOS Code: 093208C National Code: HLT52015	1 year	\$16,510	Feb, Jul	Newcastle
Remedial Massage - Diploma Course Code: RS18277 CRICOS Code: 093208C National Code: HLT52015	1.5 year	\$16,510	Feb	Kingscliff
				Port Macquarie
			Feb, Jul	Meadowbank
				Randwick
				Sutherland/Loftus

MUSIC STUDIES				
Course	Duration	Course fee	Intake	Location
Music Industry (Music Business) - Certificate III Course Code: CUA30915M CRICOS Code: 094234D National Code: CUA30915	0.5 year	\$6,870	Feb, Jul	Nirimba
				Ultimo
Music Industry (Music Business) - Diploma Course Code: CUA50815M CRICOS Code: 094233E National Code: CUA50815 Prerequisite: Certificate III in Music Industry (Music Business) [CUA30915M]	0.5 year	\$11,220	Feb, Jul	Nirimba
				Ultimo
Music Industry (Performance) - Certificate III Course Code: CUA30915P CRICOS Code: 094234D National Code: CUA30915	0.5 year	\$6,870	Feb, Jul	Nirimba
				Ultimo
Music Industry (Performance) - Diploma Course Code: CUA50815P CRICOS Code: 094233E National Code: CUA50815 Prerequisite: Certificate III in Music Industry (Performance) [CUA30915P]	1 year	\$11,220	Feb, Jul	Nirimba
				Ultimo
Music Industry (Performance) - Advanced Diploma Course Code: CUA60515P CRICOS Code: 092358G National Code: CUA60515 Prerequisite: Diploma of Music Industry (Performance) [CUA50815P]	1 year	\$10,860	Feb, Jul	Nirimba
				Ultimo
Music Industry (Sound Production) - Certificate III Course Code: CUA30915S CRICOS Code: 094234D National Code: CUA30915	0.5 year	\$6,870	Feb, Jul	Nirimba
				Ultimo

Need further help? Please see your authorised representative or contact us at intadmissions@tafensw.edu.au

MUSIC STUDIES (CONTINUED)				
Course	Duration	Course fee	Intake	Location
Music Industry (Sound Production) - Diploma Course Code: CUA50815S CRICOS Code: 094233E National Code: CUA50815 Prerequisite: Certificate III in Music Industry (Sound Production) [CUA30915S]	1 year	\$11,220	Feb, Jul	Nirimba
				Ultimo
Music Industry (Electronic Music) - Diploma Course Code: CUA50815E CRICOS Code: 094233E National Code: CUA50815	1 year	\$11,220	Feb, Jul	Ultimo

NURSING				
Course	Duration	Course fee	Intake	Location
Health Services Assistance (Assisting in Nursing Work in Acute Care) - Certificate III Course Code: HLT33115 CRICOS Code: 094262M National Code: HLT33115	0.5 year	\$9,890	Feb, Jul	Castle Hill
				Kingswood
				Meadowbank
				Newcastle
				St Leonards
	1.5 year	\$23,430	Apr	Ultimo
				Newcastle
			Feb	Wyong
			Feb, Apr, Jul, Sep	Randwick
			Feb, Jul	Kingswood
				Griffith
				Shellharbour
				St George
Nursing (October intake) - Diploma Course Code: HLT54115A CRICOS Code: 094261A National Code: HLT54115	1.25 year	\$23,430	Oct	Ultimo
				Wetherill Park

PHOTO IMAGING				
Course	Duration	Course fee	Intake	Location
Photography and Photo Imaging - Diploma Course Code: R10419 CRICOS Code: 090485F National Code: CUA50915	1 year	\$11,450	Feb	Hunter Street
				Kingscliff
			Feb, Jul	Kingswood

REAL ESTATE SERVICES				
Course	Duration	Course fee	Intake	Location
Property Services (Real Estate) - Certificate IV Course Code: 17672 CRICOS Code: 068748E National Code: CPP40307	0.5 year	\$7,420	Feb, Jul	Ultimo
Property Valuation - Bachelor Degree Course Code: 20507 CRICOS Code: 089229K National Code: NOCODE	3 year	\$45,000	Feb, Jul	Ultimo

For the latest course information, visit tafensw.edu.au/international

SPORTS AND FITNESS				
Course	Duration	Course fee	Intake	Location
Fitness - Certificate III Course Code: R12410 CRICOS Code: 092403G National Code: SIS30315	0.5 year	\$7,430	Feb	Kingscliff
				Port Macquarie
			Feb, Jul	Kingswood
				Meadowbank
				Northern Beaches
				Randwick
Fitness - Certificate IV Course Code: R19648 CRICOS Code: 092404G National Code: SIS40215 Prerequisite: Certificate III in Fitness (R12410)	0.5 year	\$10,380	Feb, Jul	Shellharbour
				Kingswood
				Meadowbank
				Northern Beaches
				Randwick
				Sutherland/Loftus

SURVEYING				
Course	Duration	Course fee	Intake	Location
Surveying and Spatial Information Services - Certificate III Course Code: I1701A CRICOS Code: 093554G National Code: CPP30216	0.5 year	\$9,470	Feb	Ultimo
Surveying - Certificate IV Course Code: CPP40216 CRICOS Code: 096144A National Code: CPP40216 Prerequisite: Certificate III in Surveying and Spatial Information Services (I1701A)	0.5 year	\$10,370	Jul	Ultimo
Surveying - Diploma Course Code: I1704A CRICOS Code: 093553G National Code: CPP50116 Prerequisite: Certificate IV in Surveying (CPP40216)	1 year	\$22,710	Jul	Ultimo

TELECOMMUNICATIONS				
Course	Duration	Course fee	Intake	Location
Telecommunications Engineering Technology (Network Engineering) - Certificate IV Course Code: ICT41215 CRICOS Code: 093770K National Code: ICT41215	0.5 year	\$13,080	Feb, Jul	Lidcombe
Telecommunications Engineering (Networking) - Diploma Course Code: ICT51015 CRICOS Code: 093771J National Code: ICT51015 Prerequisite: Certificate IV in Telecommunications Engineering Technology (Network Engineering) (ICT41215)	0.5 year	\$10,040	Feb, Jul	Lidcombe

Need further help? Please see your authorised representative or contact us at intadmissions@tafensw.edu.au



TAFE NSW COURSES

TOURISM AND EVENTS				
Course	Duration	Course fee	Intake	Location
Aviation (Cabin Crew) - Certificate III Course Code: AVI30116 CRICOS Code: 095302M National Code: AVI30116	0.5 year	\$8,500	Feb	Wollongbar
			Feb, Jul	Kingscliff
Guiding - Certificate IV Course Code: R11560 CRICOS Code: 092341F National Code: SIT40216	0.5 year	\$8,340	Feb, Jul	Ultimo
Events - Certificate III Course Code: SIT30516 CRICOS Code: 094263K National Code: SIT30516	0.5 year	\$6,950	Feb, Jul	Hamilton
				Northern Beaches
				Ryde
				Wollongong
Event Management - Diploma Course Code: R11585 CRICOS Code: 092342E National Code: SIT50316	1 year	\$12,500	Feb, Jul	Ultimo
				Wollongong
Event Management - Advanced Diploma Course Code: RS11586 CRICOS Code: 091086B National Code: SIT60216	1.5 year	\$12,500	Feb, Jul	Wollongong
Event Management includes co-enrolment of the Certificate III in Events - Diploma Course Code: RS11585 CRICOS Code: 092342E National Code: SIT50316	1 year	\$12,500	Feb	Kingscliff
			Feb, Jul	Hamilton
				Ourimbah
				Port Macquarie
				Ryde
				Wollongbar
Tourism - Certificate III Course Code: R11790 CRICOS Code: 092340G National Code: SIT30116	0.5 year	\$6,830	Feb, Jul	Northern Beaches
				Ryde
				Ultimo
Travel - Certificate III Course Code: R11558 CRICOS Code: 090943G National Code: SIT30216	0.5 year	\$7,730	Feb, Jul	Kingscliff
				Northern Beaches
				Port Macquarie
				Ryde
				Ultimo
				Wollongbar
				Wollongong
Travel and Tourism Management - Diploma Course Code: R11791 CRICOS Code: 093247G National Code: SIT50116	1 year	\$11,010	Feb	Northern Beaches
			Feb, Jul	Bankstown
				Hamilton
				Kingscliff
				Ourimbah
				Port Macquarie
				Ryde
				Ultimo
				Wollongbar
			Feb, Jul	Ultimo
Travel and Tourism Management - Advanced Diploma Course Code: RS11563 CRICOS Code: 093213F National Code: SIT60116 Prerequisite: Diploma of Travel and Tourism Management (R11791)	0.5 year	\$7,950	Feb, Jul	Ultimo
Travel and Tourism Management - Advanced Diploma Course Code: R11563 CRICOS Code: 093213F National Code: SIT60116	1.5 year	\$16,600	Feb, Jul	Bankstown
				Wollongong

For the latest course information, visit tafensw.edu.au/international



CHOOSE A LOCATION THAT SUITS YOUR LIFESTYLE

Australia is a culturally diverse country, with people from many different backgrounds living and working together. We enjoy outdoor barbeques (BBQs), going to the beach, watching theatre, visiting museums and dining out with friends and family. We also love playing and watching sport, especially cricket, soccer, football, rugby, netball, tennis, surfing and golf. Whatever your pursuit, you'll find like-minded people here in Australia to share it with.



LIFE AT TAFE NSW

Whichever TAFE NSW location you choose to attend, you'll have plenty of opportunities for social and recreational activities with local students. One of the best ways to make new friends is to join the Student Association. It provides a range of great services, discounts, facilities and activities for students and staff. It's a great way to get involved – and membership is free for all international students.

General services and support

We provide help and support for all your study-related needs. With everything at your fingertips, there's no stress adapting to a new study environment. You will also have access to:

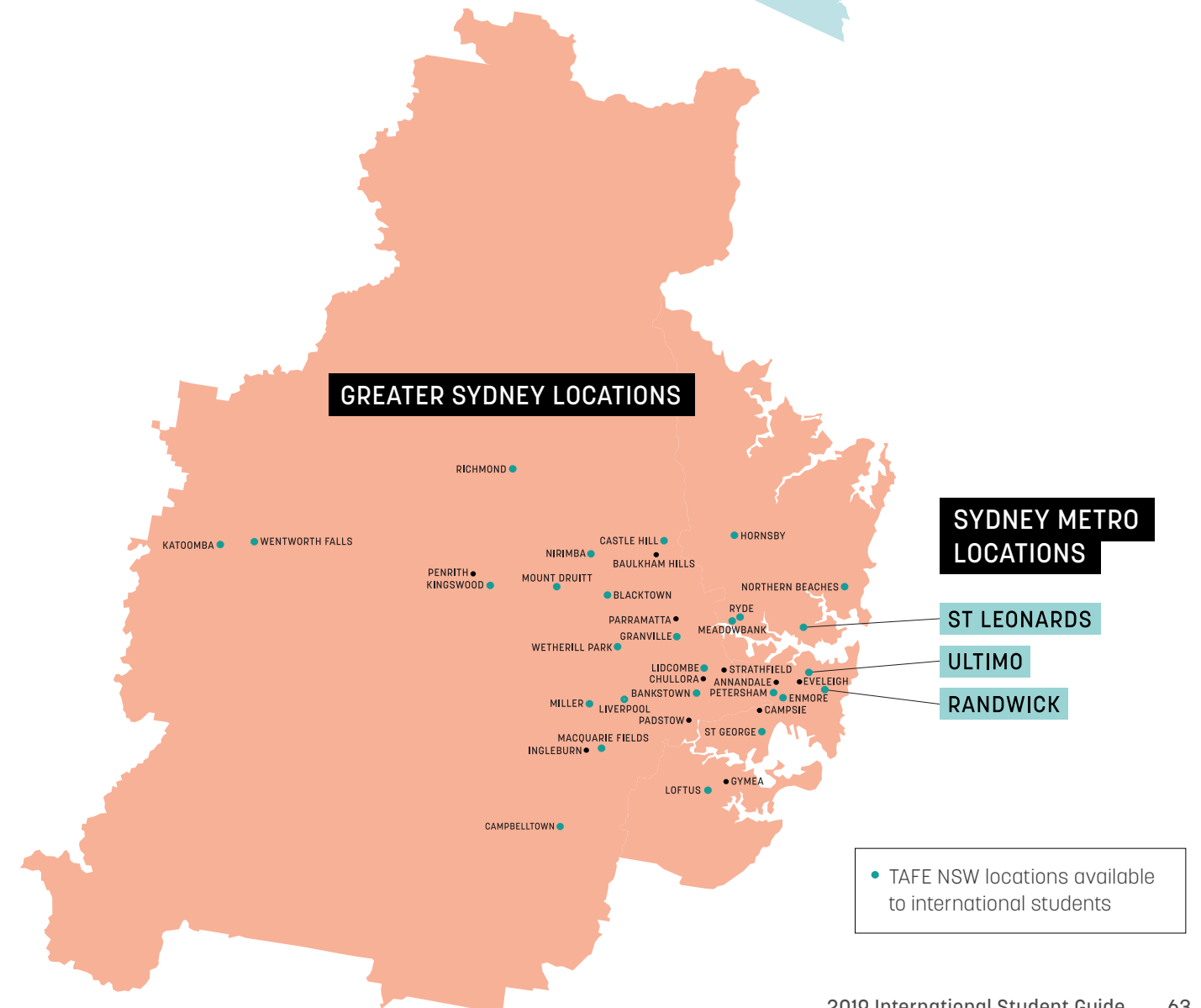
- libraries
- careers advice and help finding a job
- resume writing and preparing for a job interview
- counselling for study and other personal matters – a free and confidential service
- spacious grounds for enjoying a break
- security staff to ensure your safety while on location.

TAFE NSW Locations

With so many TAFE NSW locations to choose from, you'll find the perfect one to suit your lifestyle. If you enjoy the hustle and bustle of a thriving city lifestyle then enrol at TAFE NSW Ultimo, St Leonards or Randwick, where you'll enjoy everything Sydney has to offer. If you'd rather pristine golden beaches, then TAFE NSW Kingscliff is for you – just an hour's drive from the famous Gold Coast and Byron Bay. Or perhaps you'd like to experience the rolling hills of NSW wine country? If so, enrol at TAFE NSW Newcastle or Maitland.



YOU'LL RECEIVE A WARM WELCOME AT YOUR TAFE NSW LOCATION.



ENTRY REQUIREMENTS, VISAS, FEES AND SCHOLARSHIPS



COURSE ENTRY REQUIREMENTS

TAFE NSW international student applicant qualifications are assessed as part of the admissions process. For academic equivalences by country, see **pages 68-69**.

As a general guide, for diplomas and bachelor degrees, Year 12 or equivalent is required. Please also note:

- All TAFE NSW degree courses require Year 12 or equivalent. Additional requirements apply for most degree courses.
- To enter an advanced diploma or diploma course you may need to complete a Certificate III or Certificate IV course, or demonstrate an equivalent skill level. If a Prerequisite applies, you will receive an offer letter which includes both the lower and higher level course.
- There are additional entry requirements for Design, Digital Media, Fashion Technology, Fine Arts and Music courses. For these courses you are required to submit a portfolio, design or written task along with your application.

See the website for detailed information about entry requirements: tafensw.edu.au/international

Your level of English

The minimum English language requirement is Academic IELTS 5.5 or TOEFL (iBT) 46 or a TAFE NSW English Language Programs (Beginner to Advanced) or Exam Preparation course. Some courses like the TAFE NSW bachelor degrees require a higher IELTS, Academic IELTS 6.5 or TOEFL (iBT) 79. The Diploma of Nursing requires an overall Academic IELTS of 7 with no band less than 7 or equivalent scores in other acceptable tests such as OET.

TAFE NSW offers English language courses: **See page 14**.

Your student visa application

To apply online for a Student visa (subclass 500) go to the following link: homeaffairs.gov.au/trav/visa-1/500-

If you do not have an ImmiAccount you will be prompted to create one. You can use the DHA online tool to check the financial and English requirements that apply to you:

homeaffairs.gov.au/trav/visa-1/500-

If you are applying for a student visa from outside Australia, and if the online tool asks you to provide any additional financial or English language evidence, then you will need to apply through a TAFE NSW approved agent

For comprehensive information regarding student visas, visit the DHA website: homeaffairs.gov.au/Trav/Stud

TAFE NSW IS
COMMITTED TO MAKING
QUALITY EDUCATION
ACCESSIBLE TO
INTERNATIONAL
STUDENTS.

TAFE NSW FEES

Tuition fees*

The tuition fee is payable in advance every semester. Your letter of offer from TAFE NSW will explain payment details.

Package: English and vocational courses

- English tuition fee
- AUD \$2,000 deposit.

Package: English and/or vocational courses plus degree courses

- English tuition fee
- AUD \$2,000 deposit (if applicable)
- AUD \$4,500 non-refundable deposit.

Registration/application fees

- TAFE NSW registration fee: AUD \$100 (non-refundable)
- English language application fee: AUD \$150 (non-refundable)
- TAFE NSW Higher Education, vocational and English language package registration fees: AUD \$150 (non-refundable).

*Fees subject to change. Visit tafensw.edu.au/international

Other fees and costs*

- Uniform, equipment and textbooks: AUD \$300-\$2,500 per course
- Overseas Students Health Cover: AUD \$600 per year/per student or AUD \$3,069 per year/per family
- Airport pick-up: AUD \$140
- Accommodation placement fee: AUD \$300 (this includes guardian arrangement for students under 18 years of age)
- TAFE NSW to University partial payment deposit for university course:
 - Australian Catholic University: AUD \$5,000
 - Charles Sturt University: AUD \$10,000/\$23,000
 - Southern Cross University: AUD \$6,000
 - University of Canberra: AUD \$5,000
 - University of Newcastle: AUD \$5,000
 - University of Technology Sydney: AUD \$110 application fee.

SCHOLARSHIPS

With the Australian Government investing over A\$200 million in scholarships annually, you may be eligible for one of the following Australian scholarships:

- Endeavour Scholarships and Fellowships
- Australia Awards Scholarships (AAS)

Other countries may also provide financial assistance programs such as:

- StudentAid BC (Canadian students only)
- CSN Loans (Swedish students only)

Information about scholarships and eligibility: tafensw.edu.au/international



TAFE FEES

ACADEMIC REQUIREMENTS BY COUNTRY

Entry into every TAFE NSW course requires a specific level of academic achievement. The table below shows a sample of academic equivalencies by country.

COUNTRY	VET (CERTIFICATES, DIPLOMAS AND ADVANCED DIPLOMAS)	BACHELOR AND ASSOCIATE DEGREES
 Australia	For Certificate Courses: Australian Year 10 (Some courses might require Australian Year 12). For Diploma/Advanced Diploma: Australian Year 12 OR AQF Certificate III OR Certificate IV qualification	Australian Year 12 OR AQF Certificate IV qualification OR Completion of at least one year full-time study OR equivalent in a degree course at a Higher Education Institute
 Bangladesh	Higher Secondary Certificate/vocational higher secondary certificate (Minimum CGPA is 3.5 or 60% in HSC/First Division pass)	Higher Secondary Certificate (Minimum CGPA of 4.5 OR 70% in HSC)
 Brazil	Successful completion of Diploma/Certificado De Ensino Medio OR equivalent	Successful completion of Diploma/Certificado De Ensino Medio with a grade average of 70% or a qualification equivalent to an Australian AQF Certificate IV
 Cambodia	Successful completion of the Diploma of Upper Secondary Education	Successful completion of the Diploma of Upper Secondary Education
 China	Completion of the Senior Middle 3 with 60% average in 3 years	Successful completion of High School Certificate of Graduation (Gao San) with 70% average
 Colombia	Completion of the Bachiller/Bachillero/Bachillerato with an average grade of 65%	Completion of the Bachiller/Bachillero/Bachillerato with an average grade of 70%
 Egypt	National School Certificate of General Education (Year 11) 50%	Thanawiyya al-A'ama (General Secondary Education Certificate) National School Certificate of General Education (Year 11) 57%
 Fiji	Successful completion of Form 7 with an average of 55% for best 4 subjects	Fiji Form 7 Examination/Fiji School Leaving Certificate (FSLC) with an average of 70%
 Hong Kong	Secondary 4 or Secondary 5 or Hong Kong Certificate of Education Examination (HKCEE) OR Hong Kong Diploma of Secondary Education (HKDSE) OR Hong Kong Advanced Level Examination (HKALE)	Hong Kong Diploma of Secondary Education (HKDSE) minimum total score of 12 OR Hong Kong Advanced Level Examination (HKALE) with 3 passes
 Indonesia	SMU 3 or Secondary School Certificate of Graduation (SKHUN/STK) with an average of 60%	Senior Secondary School Certificate of Completion (Ijazah/STTB SMA/STTB SMK/STTB/MA) with an average of 65%
 India	All India Senior School Certificate OR the Indian School Certificate, or Higher Secondary Certificate with a pass of 55% in best 4 academic subjects	All India Senior School Certificate OR the Indian School Certificate, OR Higher Secondary Certificate (State Boards) with a pass of 60% in best 4 academic subjects
 Iran	Successful completion of the Pre - University Certificate (Peeshdaneshgahe) with an overall GPA of 10 out of 20	National High School Diploma (4 year program)/Pre-University Certificate OR successful completion of the Pre-University Certificate (Peeshdaneshgahe) with an overall GPA of 14 out of 20
 Iraq	Completion of Iraqui Certificate of Preparatory Studies OR 6th form Baccalaureate	Baccalaureate Ilmiya (Science) or Baccalaureate Adabiyya (Humanities) OR Baccalaureate Mihniya (Vocational) or successful completion of the Certificate of Preparatory Education/ Baccalaureate with an overall percentage of 85%
 Italy	Diploma Liceale or Diploma di istruzione tecnica (Technical education diploma) OR Diploma di istruzione professionale (Vocational education diploma)	Diploma Liceale or Diploma di istruzione tecnica (Technical education diploma) OR Diploma di istruzione professionale (Vocational education diploma)
 Japan	Lower Secondary School Certificate of Graduation (Chugakko) and completion of at least 1 year of Upper Secondary School (Kotogakko)	Upper Secondary School Certificate of Graduation (Kotogakko)

COUNTRY	VET (CERTIFICATES, DIPLOMAS AND ADVANCED DIPLOMAS)	BACHELOR AND ASSOCIATE DEGREES
 Jordan	Successful completion of the General Secondary Education Certificate (Al- Tawjihiyah OR Shadet Alderasa athnawia) with an overall achievement of 55%	General Secondary Education Certificate Examination (Tawjihi) or successful completion of the General Secondary Education Certificate (Al-Tawjihiyah OR Shadet Alderasa athnawia) with an overall achievement of 60%
 Kenya	Successful completion of the Kenya Certificate of Secondary Education (KCSE) awarded with D grade average or higher	Kenya Certificate of Secondary Education (KCSE) OR successful completion of the Kenya Certificate of Secondary Education (KCSE) awarded with C+ grade average or higher
 Lebanon	Successful completion of the Baccalauret Libanais with a minimum overall grade of 9	Successful completion of the Baccalauret Libanais with a minimum overall grade of 10
 Malaysia	Year 10 or 11 Equivalent - SPM OR GCE O-Levels (4 passes) or Senior Middle 2Year 12 Equivalent - STPM Senior Secondary Certificate of Education or GCE A Levels (2 passes)	STPM Senior Secondary Certificate of Education (Overall average of minimum 60%) OR GCE A-Level with 3 passes with an aggregate score of 5
 Myanmar	GCE A-Level examination with an aggregate score of 7w	Basic Education High School Examination Matriculation OR GCE A-Level with 3 passes with an aggregate score of 5
 Nepal	Successful completion of the Nepalese Higher Secondary Certificate with an average grade of 55% in the final year results	Higher Secondary Education Board Certificate (Grade 12) or successful completion of the Nepalese Higher Secondary Certificate with an average grade of 60% in the final year results
 Nigeria	Successful completion of the Senior Secondary Certificate with an aggregate grade of 20 based on the best 6 subjects	Successful completion of the Senior Secondary Certificate with an aggregate grade of 26 based on the best 6 subjects
 Pakistan	Successful completion of Higher School Certificate or Intermediate Certificate with a First Division pass and an overall average of 60%	Successful completion of Higher School Certificate or Intermediate Certificate with a First Division pass and an overall average of 65%
 Philippines	Successful completion of a recognised foundation studies program, one year of university studies	Successful completion of a recognised foundation studies program, or two years of university studies
 Russia	Successful completion of Attestat o Srednem (Polnom) Obschem Obrazovanii (Certificate of [Complete] Education) with a GPA of 3.5	Successful completion of Attestat o Srednem (Polnom) Obschem Obrazovanii (Certificate of [Complete] Education) with a GPA of 4.5
 Saudi Arabia	Successful completion of the General Secondary Education Certificate (Tawjihiiyya) with an overall achievement of 60%	General Secondary Education Certificate (3 years) (any stream) or successful completion of the General Secondary Education Certificate (Tawjihiiyya) with an overall achievement of 65%
 South Korea	Successful completion of Senior High School Certificate with an overall GPA of 2.2/4 OR 55% or CSAT score of 276	Successful completion of Senior High School Certificate with an overall GPA of 3/4 OR 65% or CSAT score of 280
 Spain	Titulo de Bachiller	Titulo de Bachiller - 3 passes
 Sri Lanka	Edexcel GCE A-Level examination with an aggregate score of 7	GCE A-Level with 3 passes with an aggregate score of 5
 Taiwan	Senior High School Diploma OR Senior Vocational School Diploma	Senior High School Diploma or Senior Vocational School Diploma - overall average of 65%
 Thailand	Successful completion of the Certificate of Secondary Education or Matayom 5 with 4 passes (academic subjects only) GPA 2.5	Certificate of Secondary Education/Certificate in Vocational Education OR successful completion of the Certificate of Secondary Education OR Matayom 6 with a minimum GPA of 1.55
 Vietnam	Certificate Courses: Year 11 with GPA 6.5. Diploma & Advanced Diploma Courses: Year 12 with GPA 6.0 and successful completion of Diploma of General Education (Bang Tot Nghiep Pho Thong Trung Hoc) OR Secondary Vocational School Certificate (Bang Tot Nghiep Trung Hoc Chuyen Nghiep)	Year 12 with GPA 7.0 and successful completion of Diploma of General Education (Bang Tot Nghiep Pho Thong Trung Hoc) OR Secondary Vocational School Certificate (Bang Tot Nghiep Trung Hoc Chuyen Nghiep)
 Zimbabwe	Successful completion of the ZIMSEC A Level Certificate with a minimum 2 passes in principal subjects	GCE A-Level with 3 passes with an aggregate score of 5 OR COHSC or successful completion of the ZIMSEC A Level Certificate with a minimum 3 passes in principal subjects

For some courses you may also need to submit a portfolio, design or written task, and/or attend an interview. The minimum English language requirement is Academic IELTS 5.5 or TOEFL (iBT) 46 or a TAFE NSW English Language course **(see pages 14-15)**. References to averages indicate a minimum standard.

THE APPLICATION PROCESS

Choose a course and location

Make sure you meet the entry requirements: see **page 66**

1

Download and complete the application form

For TAFE NSW to University packages, download the respective university application form and submit it along with your application: tafensw.edu.au/international

2

Prepare certified copies* of your documents

(see checklist at right)

3

Submit your application online

tafensw.edu.au/international
A TAFE NSW registered agent can help

4

Accept your offer and make payment

5

A TAFE NSW Student Advisor will assess your application and issue your offer letter(s) with an invoice

6

Your Student Advisor will issue a Confirmation of Enrolment (CoE)

7

Apply for your visa and enrol at TAFE NSW

8

* A certified copy is a copy of the original document signed and dated by the organisation that issued the original document, a government official, Public Notary or Justice of the Peace, or an agent of TAFE NSW, confirming that they have sighted the original.

CHECKLIST

Please ensure that you have attached the following to your application:

- ☐ Certified copy of your passport pages with personal specifics including the page containing a current Australian visa, if applicable.
- ☐ Certified copy of English language test results, if applicable.
- ☐ Certified copy of academic transcripts and educational certificates (with certified translations if not in English).
- ☐ Copies of your current electronic Confirmation of Enrolments (eCoE), if applicable.
- ☐ Non-refundable AUD \$150 application fee if you apply for an English-only course.
- ☐ Certified copy of documents to be assessed for Recognition of Prior Learning, if applicable.
- ☐ Certified copy of your health fund membership card, if applicable.
- ☐ Any additional documents required to support your application.

2019 TERM DATES

Certificate and diploma courses

Term 1 (February intake)	4 February – 14 April	Term 3 (July intake)	22 July – 29 September
Autumn vacation	15 April – 28 April	Spring vacation	30 September – 13 October
Term 2 (April* intake)	29 April – 7 July	Term 4 (September* intake)	14 October – 8 December
Winter vacation	8 July – 21 July	Summer vacation	9 December – to be advised

* Only available for some courses. See [tafensw.edu.au/international](https://www.tafensw.edu.au/international)
Note: There are two semesters per calendar year.

Degree courses

Semester 1 (February intake)		Semester 2 (July intake)	
Term 1	18 February – 12 April	Term 3	29 July – 27 September
Autumn vacation	15 April – 26 May	Spring vacation	30 September – 11 October
Term 2	29 May – 14 June	Term 4	14 October – 29 November
Winter vacation	17 June – 19 July	Summer vacation	2 December – 14 February 2020

Note: There are two semesters per calendar year.

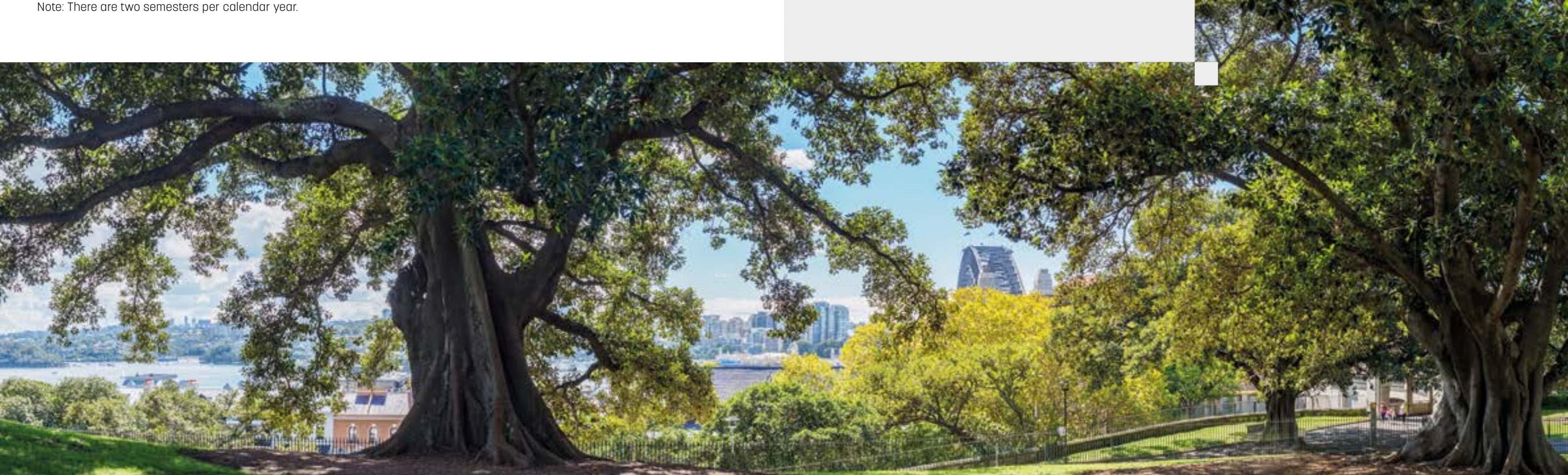
English language courses*

New students can start on Monday of any week, although at some centres, sessions start every five weeks.

Session 1	2 January – 1 February	Session 6	24 June – 26 July
Session 2	4 February – 8 March	Session 7	29 July – 30 August
Session 3	11 March – 12 April	Session 8	2 September – 4 October
Session 4	15 April – 17 May	Session 9	8 October – 8 November
Session 5	20 May – 21 June	Session 10	11 November – 13 December

* You can discuss the best study plan and start date for you with the English Language Centre you choose to study with.

TAFE NSW has made every reasonable effort to ensure the information in this Guide is accurate (September 2018). TAFE NSW continuously reviews its curriculum to ensure it meets current industry requirements and reserves the right to withdraw and change courses at short notice. TAFE NSW to University pathways, tuition fees and course locations are current at the time of printing but subject to review and/or change at short notice. It is advisable to visit our website [tafensw.edu.au/international](https://www.tafensw.edu.au/international) for the latest information.



HOW TO COMPLETE THE APPLICATION FORM

Complete the application form and email to intadmissions@tafensw.edu.au

In order to give your application the best chance of success, and to help us process it as quickly as possible, please ensure you fill in all areas relevant to your application. Please refer to the table below to help you decide which areas of the form are relevant to you. If you would like any assistance in completing the form, please contact us at: intadmissions@tafensw.edu.au

Course areas

When filling out the application form you must indicate your course selections. To make it easier to complete this section, each course area has been assigned a letter.

How to complete Section 4 – course choices

Find your specific course selection in the table below. The letters in the table show the parts of Section 4 you will need to complete. For example, if you have chosen to study an English course followed by a TAFE NSW vocational course, you would complete A + B.

A	ENGLISH LANGUAGE COURSES Course durations are available from 5 to 52 weeks	C	TAFE NSW DEGREE COURSES Bachelor degree and associate degree courses
B	TAFE NSW VOCATIONAL COURSES Certificate, diploma and advanced diploma courses	D	UNIVERSITY DEGREE COURSES These are pathways from TAFE NSW courses to degrees at Australian universities

YOUR COURSE SELECTION	FORM AREAS TO COMPLETE			
ENGLISH ONLY	A			
ENGLISH + VOCATIONAL	A	B		
ENGLISH + VOCATIONAL + TAFE NSW DEGREE	A	B	C	
ENGLISH + TAFE NSW DEGREE	A		C	
ENGLISH + VOCATIONAL + UNIVERSITY DEGREE	A	B		D
VOCATIONAL ONLY		B		
VOCATIONAL + TAFE NSW DEGREE		B	C	
VOCATIONAL + UNIVERSITY DEGREE		B		D
TAFE NSW DEGREE ONLY			C	

TAFE NSW INTERNATIONAL STUDENT APPLICATION FORM

Please complete the application form in English and print clearly in CAPITAL LETTERS.

Please send the completed application form and supporting documents to intadmissions@tafensw.edu.au



SECTION 1 – STUDENT DETAILS

Surname or family name

Given name(s)

Date of birth (DD/MM/YYYY) / / Male ☐ Female ☐ Nationality

Country of birth Passport number

If you are currently living outside Australia, please provide your overseas address. If you are already living in Australia, please provide your Australian address.

Number and street

Suburb/town/city Postcode/ZIP

Country

Home phone number (include country code) + Mobile phone number (include country code) +

Student email address (an email address is mandatory so we can send you correspondence)

SECTION 2 – PREVIOUS TAFE NSW STUDIES

Have you previously been enrolled at TAFE NSW? ☐ Yes ☐ No If yes, please provide your student number

SECTION 3 – ENGLISH PROFICIENCY

Please tick ☒ if one of the three options applies:

☐ 1 I have taken a recognised English language test in the past two years (eg IELTS, TOEFL, PTE)

Name of test Score

Date of test (DD/MM/YYYY) / /

☐ 2 I will take an IELTS/TOEFL/PTE English test on (DD/MM/YYYY): / /

☐ 3 English was the medium of instruction in my senior school studies and I gained a satisfactory pass in English

Please attach documentation if you selected option 1 or 3 above

SECTION 4 – COURSE CHOICES

A **ENGLISH LANGUAGE COURSES**

I wish to enrol in a TAFE NSW English course before I commence my Certificate, Diploma or Degree course for the following number of weeks:

☐ 5 weeks ☐ 10 weeks ☐ 15 weeks ☐ 20 weeks ☐ 25 weeks ☐ 30 weeks ☐ 35 weeks ☐ 40 weeks ☐ 45 weeks ☐ 50 weeks

Start month (MM/YYYY) /

Note: The number of weeks is subject to assessment by TAFE NSW

Preferred English Language Centre location:

☐ Meadowbank (Northern Sydney) ☐ Ultimo (Sydney)

☐ Kingscliff (North Coast) ☐ Wollongong (Illawarra)

☐ Liverpool (South Western Sydney)

☐ Newcastle (Hunter)

B **TAFE NSW VOCATIONAL COURSES**

Please indicate the TAFE NSW course you wish to study and your preferred location. Refer to the map on our website: tafensw.edu.au/international

Starting month ☐ February ☐ April* ☐ July ☐ September* Start year

TAFE NSW course number TAFE NSW course name Location preference 1 Location preference 2

If you wish to package the above course with additional TAFE NSW courses, please nominate the courses below. You may only apply for one of the packages listed at tafensw.edu.au/international

TAFE NSW course number TAFE NSW course name

Second course

Third course

*Only available for some courses. See tafensw.edu.au/international

C **TAFE NSW DEGREE COURSES**

Please indicate the TAFE NSW Degree course you wish to study and your preferred location. Refer to our website: tafensw.edu.au/international

Starting month ☐ February ☐ July Start year

TAFE NSW course number TAFE NSW course name Location preference 1 Location preference 2

D **UNIVERSITY DEGREE COURSES**

If you wish to apply for a TAFE NSW to University package, please nominate the university course below and complete a separate university application form. Application forms and information about partner universities and courses are available at tafensw.edu.au/international

University course number University course name Location preference 1 Location preference 2

University name ☐ Charles Sturt University (CSU) ☐ University of Canberra (UC) ☐ Australian Catholic University (ACU)

☐ Southern Cross University (SCU) ☐ The University of Newcastle (UoN) ☐ University of Technology Sydney (UTS)

SECTION 5 - EMERGENCY CONTACT DETAILS

Please provide the contact details of a family member or friend we can contact in an emergency. Students under 18 years of age must provide parent contact details.

Surname or family name

Given name(s)

Number and street

Suburb/town/city

Postcode/ZIP

Country

Relationship

Home phone number
(include country code)

Mobile phone number
(include country code)

Email address
(an email address is mandatory so we can send them correspondence)

SECTION 6 - VISA AND OVERSEAS STUDENT HEALTH COVER (OSHC)

Do you hold a current Australian visa? ☐ Yes ☐ No If yes, what visa type?

Expiry date (DD/MM/YYYY)

Where will you lodge your student visa application? ☐ In Australia ☐ Outside of Australia

Have you been refused a visa from any country including Australia for any reason? ☐ Yes ☐ No *If yes, you will be asked to provide full details and copies of any documents.*

Do you already have OSHC cover? ☐ Yes ☐ No If yes, name of current provider?

Expiry date (DD/MM/YYYY)

If no, please tick ☒ the type of OSHC that you require: ☐ Single ☐ Couple ☐ Family (one/both parents with one or more children)

SECTION 7 - EDUCATION

(a) Education summary

Please list details of your previous education and training (high school, tertiary) which will be used to assess your eligibility for your course of study. Please attach certified copies of full academic transcripts.

HIGHEST QUALIFICATION/LEVEL OF STUDY

Qualification (eg. A-Levels, Year 12, Diploma, Degree etc)	Institution name	Country	Year finished

.....

(b) Current studies in Australia

Are you currently studying in Australia? ☐ Yes ☐ No *If yes, please complete the details below and provide a copy of your currently held electronic Confirmation of Enrolments*

Institution name

Course

Date started (DD/MM/YYYY)

End date (DD/MM/YYYY)

SECTION 8 - RECOGNITION OF PRIOR LEARNING

Recognition of prior learning (RPL) is a process for giving candidates credit for skills, knowledge and experience gained through working and learning. It can be gained at any stage of their lives, through formal and informal learning, in Australia or overseas, through work or other activities such as volunteering.

Are you applying for RPL? ☐ Yes ☐ No *If yes, please provide certified copies of academic transcripts and details of courses e.g. syllabus documents, details and references on work experience*

SECTION 9 - HOMESTAY AND ARRIVAL SERVICES

Students under the age of 18 years

International students under 18 years of age must have appropriate accommodation and welfare arrangements for their period of study in Australia. Students under 18 years of age must have a NSW resident guardian/carer. Parents must nominate one of the following accommodation and welfare options:

☐ I will nominate a guardian who is a suitable relative resident in NSW who will act in matters relating to the welfare and progress of the child. For further details please refer to the Department of Home Affairs (DHA) website: [www.homeaffairs.gov.au/Trav](#)

☐ I request that TAFE NSW arrange Homestay, guardianship and airport pickup. Fees apply, see: [tafensw.edu.au/international](#)

SECTION 10 - DISABILITY SUPPORT

Do you have a disability that requires TAFE NSW to assist you in your learning environment? ☐ Yes ☐ No *Please refer to Terms and Conditions*

If yes, please provide details

SECTION 11 - GENUINE TEMPORARY ENTRANT (GTE) ASSESSMENT

This section helps TAFE NSW assess whether you meet the Australian Government’s Genuine Temporary Entrant (GTE) criteria. It is important that the section is correctly completed and that all required documentation is attached. See: [www.homeaffairs.gov.au/StudyinginAustralia/Documents/direction-no-69.pdf](#)

If you (i) are applying for a student visa from outside Australia and (ii) you are required by DHA to provide proof of funds with your visa application, you must then complete this section through a TAFE NSW Representative. TAFE NSW may at its discretion require applicants from other countries also to apply through a representative. (Please check DHA requirements at: [www.homeaffairs.gov.au/trav/visa-1/500-](#) Find TAFE NSW representatives at: [tafensw.edu.au/international](#))

Offer letters will be issued only if TAFE NSW considers that you meet the GTE requirements. In addition to assessment of this section, TAFE NSW may interview you as part of the GTE assessment process.

If the space provided below is not enough please provide your answers on a separate sheet.

1. Is this course available in your home country? Explain why you would like to study in Australia and not in your home country or in any other country? Please include any independent research you may have taken to come to this decision?

2. Explain why you have chosen to study at TAFE NSW and not with any other provider? Please include any independent research you may have taken to come to this decision? Also, include research on the location of your preferred campus and living arrangements?

3. Explain the value of the TAFE NSW course to your career and how it relates to your previous education and (if applicable) previous employment? Please include your career plan?

4. Discuss future employment opportunities in your home country and expected income? How does the expected income justify the cost of studying this course in Australia?

5. If your last studies occurred more than six months ago, please explain what you have been doing since that date.

6. Please check student visa financial requirements at homeaffairs.gov.au/trav/stud/more/student-visa-living-costs-and-evidence-of-funds. You will be able to check if you are required to provide proof of financial capacity with your visa application. You can also check the evidence options and the amounts required under each option.

I have checked the website and understand the financial requirements for a student visa ☐ Yes ☐ No

ASSESSMENT - TO BE COMPLETED BY THE TAFE NSW REPRESENTATIVE

1. Applicant's TAFE NSW course is related to their previous studies or employment

☐ Yes ☐ No

2. Applicant has career goals and has researched the value of the TAFE NSW course to their future

☐ Yes ☐ No

3. Applicant's knowledge of TAFE NSW, course, location and living arrangements is satisfactory

☐ Yes ☐ No

4. Applicant has a strong incentive to return to their home country and does not have strong incentive to remain in Australia

☐ Yes ☐ No

5. Applicant has realistic expectations of costs for them and all their family members

☐ Yes ☐ No

6. Applicant's previous visa and travel history is satisfactory

☐ Yes ☐ No

7. Applicant has realistic expectations about their ability to find work and their likely income in their location

☐ Yes ☐ No

8. I have checked the applicant's documents, including financial and academic documents

☐ Yes ☐ No

9. I consider that this applicant meets DHA's Genuine Temporary Entrant (GTE) criteria

☐ Yes ☐ No ☐ Recommend interview by TAFE NSW

I confirm that I have briefed the applicant and the applicant's parents (if applicant is under 18) on the Terms and Conditions relating to this application and that I have provided the applicant with relevant information on TAFE NSW and the course consistent with the requirements of the ESOS Act 2000 and the National Code 2018.

Signature of TAFE NSW representative making recommendation

Print name

Date (DD/MM/YYYY)

Are you a registered agent with TAFE NSW?

☐ Yes ☐ No

Branch office

Phone number
(including country code)

Email address

Agent
Representative
Stamp

TAFE NSW INTERNATIONAL
TERMS AND CONDITIONS



Your application to enrol as an international student will be assessed by TAFE NSW. An offer will be issued to you only if you meet admission requirements, including academic, English language and student visa requirements as assessed by TAFE NSW.

TAFE NSW defines a study period as the following:

- A standard Vocational semester consists of two terms, with a total of 18 teaching weeks.
- A standard Higher Education semester consists of two terms, with a total of 15 teaching weeks.
- English language courses are delivered in five-week sessions.

All fees in these terms and conditions are shown in Australian Dollars (AUD).

1 REVIEW OF TUITION FEES

TAFE NSW reserves the right to review its fees and charges. Fees are subject to annual review. If tuition fees are changed you will be required to pay the new fees from the commencement of the next semester. If you defer your course, you will be required to pay the fees applicable at your new commencement date.

Fee increases for students who have accepted an offer of enrolment, or who re-enrol in the same course or a new course within a package of courses will be limited to a maximum of 10 percent of the original fee.

2 VARIATION OF TUITION FEES

I. Vocational courses

If you are required to repeat units or to re-sit assessments during the standard duration of your course (as indicated by your e-Confirmation of enrolment), then additional fees may apply. The additional fees will be the same as those applicable to domestic students repeating units or re-sitting assessments.

If you extend the original duration of your course or are granted a variation to your study load due to recognition of prior learning, if the number of hours of study is less than 50 percent of a standard semester load, a pro-rata fee will apply. However, if the number of hours of study is equal to or more than 50 percent of a standard semester load, a full semester fee will apply.

II. Higher Education courses

If, in a semester, you are approved to enrol in less than a standard semester load, fees will be charged on a per-subject basis.

Such approvals will be given only where you obtain recognition of prior learning or are exempted from certain subjects in a semester or where your study load is reduced as part of an academic intervention strategy.

3 TAFE NSW VOCATIONAL, HIGHER EDUCATION AND PACKAGED PROGRAMS

- I. Payment of fees
- New students must pay the registration fee, English language tuition fee (if applicable), Overseas Students Health Cover (OSHC) for the length of the visa, and the course tuition fees by the due date stated in the letter of offer. This must be paid prior to the start of the course.
 - If a TAFE NSW Diploma is packaged with a Higher Education course then students will be required to pay a non-refundable course fee of \$4,500. This fee will be used towards the Higher Education component of their package.
 - The following table shows the payment arrangements before commencement for new students for Vocational or Higher Education courses or packages of English language, Vocational and/or Higher Education courses.

STUDY OPTIONS	FIRST PAYMENT	DUE DATE	SECOND PAYMENT	DUE DATE
VET only	One semester* of VET tuition fees	As per statement of fees	Not applicable	Not applicable
COMBINED English language 25 weeks or less + VET	Full English language tuition fees + \$2,000 VET tuition fees (students studying less than 10 weeks of English must pay one semester of VET tuition fees)	As per statement of fees	Balance of semester's VET tuition fees if applicable	3 weeks before VET course commencement
COMBINED English language more than 25 weeks + VET	Maximum of 50 percent of the total English language tuition fees + \$2,000 VET tuition fees	As per statement of fees	Balance of English tuition fees	2 weeks before the second study period
			Balance of semester's VET tuition fees	3 weeks before VET course commencement
COMBINED VET + TAFE NSW Higher Education	One semester* of VET tuition fees + \$4,500 non-refundable Higher Education tuition fees	As per statement of fees	Balance of semester's Higher Education tuition fees	3 weeks before Higher Education course commencement
COMBINED English language 25 weeks or less + VET + TAFE NSW Higher Education	Full English language tuition fees + \$2,000 VET tuition fees (students studying less than 10 weeks of English must pay one semester of VET tuition fee) + \$4,500 non-refundable Higher Education tuition fees	As per statement of fees	Balance of semester's VET tuition fees if applicable	3 weeks before VET course commencement
			Balance of semester's Higher Education tuition fees	3 weeks before Higher Education course commencement
COMBINED English language more than 25 weeks + VET + TAFE NSW Higher Education	Maximum of 50 percent of the total English language tuition fees + \$2,000 VET tuition fees + \$4,500 non-refundable Higher Education tuition fees	As per statement of fees	Balance of English tuition fees	2 weeks before the second study period
			Balance of semester's VET tuition fees	3 weeks before VET course commencement
			Balance of semester's Higher Education tuition fees	3 weeks before Higher Education course commencement
TAFE NSW Higher Education only	One semester of Higher Education tuition fees	As per statement of fees	Not applicable	Not applicable
COMBINED English language 25 weeks or less + TAFE NSW Higher Education	Full English language tuition fees + \$4,500 non-refundable Higher Education tuition fees (students studying less than 10 weeks of English must pay one semester of Higher Education tuition fees)	As per statement of fees	Balance of semester's Higher Education tuition fees	3 weeks before Higher Education course commencement
COMBINED English language more than 25 weeks + TAFE NSW Higher Education	Maximum of 50 percent of the total English language tuition fees + \$4,500 non-refundable Higher Education tuition fees	As per statement of fees	Balance of English tuition fees	2 weeks before the second study period
			Balance of semester's Higher Education tuition fees	3 weeks before Higher Education course commencement

* 50 percent of tuition fees will be charged for courses less than 12 months duration and more than six months duration.

TAFE NSW INTERNATIONAL TERMS AND CONDITIONS



- Tuition fees for Higher Education or vocational and packaged programs are payable within four weeks of receipt of an offer to study at TAFE NSW. If you apply within four weeks of the course commencement date, the fees are payable within seven days of receipt of the offer letter.
- Continuing English language students (with offers of more than 25 weeks) must pay the balance of their tuition fee for their English language course of study by the due date on their additional fee statement (two weeks before the commencement of the next study period) or a late payment fee of \$200 will apply. Failure to pay the fees may lead to cancellation of enrolment. Academic results will be withheld when fees are outstanding.
- Continuing Higher Education and/or vocational course students must pay the tuition fee for their next study period by the due date on their fee statement (two weeks before the commencement of the next study period) or a late payment fee of \$200 will apply. Failure to pay the fees may lead to cancellation of enrolment. Academic results will be withheld when fees are outstanding.
- Continuing Higher Education and/or vocational course students under compassionate and compelling circumstances may apply to pay the tuition fee in instalments. If the request is approved then an instalment fee of \$200 will apply.

II. Change of course/location and fees

- Once an electronic Confirmation of Enrolment (eCoE) has been issued to you and you wish to change your course or location before or during the course period, an application to change course/location must be lodged with TAFE NSW. Approval of the application is not guaranteed.
- Different tuition fees may apply for the same/different course at same/ different location. Where a change of course/location is approved, and a higher tuition fee applies for the same/different course at the same/ second location, you must pay any difference in the fees applicable before you can enrol in the same/second course/location.
- If a lower fee applies for the same/different location/course at the same/second location, you can either apply for a refund of the excess fee or the excess will be carried forward as a credit to next semester fee.

III. Refund policy for Higher Education or Vocational Course only or Higher Education or Vocational Course component of a packaged program

- This refund policy will apply only when TAFE NSW has issued you with an eCoE, regardless of whether you have or have not submitted your application for a student visa.
- There is no refund for days designated as Australian/NSW public holidays.
- Processing fee, application/registration fee, accommodation placement fee (including guardianship arrangement) and airport pick-up fee are not refundable.
- The tuition fee of \$4,500 paid towards the TAFE NSW Higher Education component of a package is non-refundable upon the acceptance of the offer, except in the case of a visa refusal.

Tuition fees paid are not refundable if:

- A student fails to comply with the conditions of enrolment at TAFE NSW.
- A student breaches any of the visa requirements of his or her visa as imposed by the Australian Government.
- A student requests a transfer to another provider prior to the completion of six months of their principal course in TAFE NSW and this request is not approved.
- A student withdraws from their vocational course on or after the commencement date of the course of study.
- A student withdraws from their higher education course after the relevant census date. Census dates are listed in the Higher Education calendar at: [tafensw.edu.au/courses/tafe-nsw-degrees/academic-calendar](https://www.tafensw.edu.au/courses/tafe-nsw-degrees/academic-calendar)
- A student/parent provides false or misleading information (unless a refund is applicable under the ESOS Act).

Part or whole of the tuition fees paid are refundable under the following circumstances:

- If your application for a visa to study in TAFE NSW is refused before commencing a course, then a deduction of \$300 or five percent of the semester fee paid, whichever is the lesser, will apply.
- If you commence a TAFE NSW course before your student visa application has been processed and it is subsequently rejected, a pro-rata refund of tuition fees paid will be made.
- TAFE NSW will refund 90 percent of the semester fee paid if you withdraw from your Higher Education and/or vocational course four weeks (28 days) or more before course semester commencement.
- TAFE NSW will refund 80 percent of the semester fee paid if you withdraw from your Higher Education and/or vocational course within the final four weeks (28 days) before the course semester commencement.

- TAFE NSW will refund 75 percent of the semester fee paid for a vocational course where you:

- (a) Receive an offer for an undergraduate course which is not offered by TAFE NSW Higher Education in an Australian university immediately following the completion of the NSW Higher School Certificate; and
- (b) Withdraw from the course no later than 14 days after the start date to take up your place in a higher education degree course.

- TAFE NSW will refund pro-rata tuition of the semester fee paid from the date of becoming an Australian permanent resident, minus a \$300 processing fee if you have been granted permanent residency after your application and before or during a TAFE NSW course.
- TAFE NSW will refund pro-rata tuition of the semester fee paid from the date of becoming a temporary resident, minus a \$300 processing fee and minus any temporary resident tuition fees if you have been granted temporary residency after your application and before or during a TAFE NSW course.
- TAFE NSW will refund 50 percent of the semester fee paid for a Higher Education course if you withdraw from the course on or after the course commencement but before the relevant census date.
- TAFE NSW will refund 100 percent of semester fee paid of the Higher Education course, less the \$300 processing fee, if you become a permanent resident on or before the relevant census date. TAFE NSW will not refund any tuition fees paid of the Higher Education course if you become a permanent resident after the relevant census date.
- TAFE NSW will refund pro-rata semester fee paid of the Higher Education course from the date of becoming a temporary resident, minus a \$300 processing fee, if you have been granted temporary residency after your application and before or during a TAFE NSW course on or before the relevant census date. TAFE NSW will not refund any tuition fees paid of the Higher Education course if you become a temporary resident after the relevant census date.

IV. Refund Procedures

- You must complete a TAFE NSW Refund Application Form and attach all supporting documents. The Refund Application Form is available for download from [tafensw.edu.au/international](https://www.tafensw.edu.au/international)
- Your refund will be processed within four weeks of receipt of your completed refund application if all the required documents are provided. Should TAFE NSW withdraw a location/course the student has enrolled in, the refund will be processed within two weeks. A written statement will be provided to the student to explain how the refund is calculated.
- If you are returning home, TAFE NSW may access VEV0 to confirm your location prior to processing the refund.

V. Deferrals

- In a package offer, if you do not reach the level of English specified in the letter of offer for the vocational/Higher Education course, you may defer commencement of your Higher Education and/or vocational course until the next available intake for that course. However, if you withdraw from that course, TAFE NSW will refund tuition fees paid for the vocational course minus a \$300 processing fee.
- If you obtain a deferral of the Higher Education and/or vocational component of your combined packaged course and fail to enroll on the deferred start date the following will apply:
 - If you requested a deferral four weeks (28 days) or more before the original course start date then 90 percent of the semester fee paid will be refunded.
 - If you requested a deferral within the final four weeks (28 days) before the original course start date then 80 percent of the semester fee paid will be refunded.
 - If you requested a deferral after the commencement of your original course you will not be eligible for a refund.
 - If you have not requested a deferral within two months of the start date of your course, tuition fees paid will be forfeited.
 - If there is an increase in course fees for the deferred start date you will be liable to pay the new semester tuition fees in order for the new eCoE to be issued.

VI. Suspensions

- If you obtain a suspension to your enrolment after the commencement of the semester, a pro-rata transfer of the remainder of the current semester's tuition fee may be granted. The fee transferred, if any, will be held towards tuition for the semester that you are returning to as an international student. You will be required to pay any balance prior to resuming the studies. If you decide not to recommence studies, or you recommence the course as a temporary or permanent resident, no refund of the fees transferred will be made.

TAFE NSW INTERNATIONAL TERMS AND CONDITIONS



4 TRANSFERS

I. Transfer to a TAFE NSW Higher Education Course

TAFE NSW will transfer the tuition fees from your vocational course to a TAFE NSW Higher Education course if you withdraw from the vocational course and enrol in the TAFE NSW Higher Education course within 14 days after the semester commencement.

II. Transfer between TAFE NSW Higher Education for Higher Education or TAFE NSW for Vocational Courses

Once an eCoE has been issued to you, you must remain enrolled in the Higher Education or vocational course for at least one semester at the TAFE NSW location stated in your offer of enrolment. An application for a change of location before completion of one semester will be approved only in exceptional circumstances.

5 TAFE NSW ENGLISH LANGUAGE COURSE FEES AND REFUNDS

I. Payment of Fees

- New students must pay the application fee, English language tuition fee (as applicable) and Overseas Students Health Cover (OSHC) for the length of the visa by the due date stated in the letter of offer. This must be paid prior to the start of the course.

STUDY OPTIONS	FIRST PAYMENT	DUE DATE	SECOND PAYMENT	DUE DATE
English language 25 weeks or less	Full English language tuition fee	As per statement of fees	Not applicable	Not applicable
English language more than 25 weeks*	Maximum of 50 percent of the total English language tuition fee	As per statement of fees	Balance of English tuition fees	2 weeks before the second study period*

II. Transfer of Fees

- If you complete your English course at TAFE NSW earlier than expected and there is a further general English course available at the centre, any remaining fees will be applied to the new course. If you enrol immediately in a TAFE NSW vocational course, the remainder of your paid English tuition fees will be transferred to the TAFE NSW course.
- If you are accepted into a TAFE NSW course before you complete your English course, we will transfer to that course the remainder of your paid fees as at the end of the English course session/term in which you are enrolled at the time of transfer. No fees will be transferred to other institutions or persons.

III. Refund Procedures

- All applications for refunds must be made in writing and must contain the eCoE form, receipt for course fees and certified copies of any supporting documentation. Applications for refund can be found on our website: [tafensw.edu.au/international](https://www.tafensw.edu.au/international)
- No refund will be paid to a third party unless the student indicates the name, address and bank account details of the person to whom the refund should be paid. If these details are not provided, the refund will be sent to the student's address as indicated in Part I of the application form or the refund form.

IV. Refund Policy for TAFE NSW English Language Courses

- A \$100 processing fee applies to all refunds except when a student visa is refused.
- Course fee refunds are calculated from the date a written refund application is received only, on the following basis:
 - The English Language Centre will refund 100 percent of the English language course fee paid if your application for a visa to study in Australia is rejected.
 - The English Language Centre will refund 100 percent of the English language course fee paid if the course you have enrolled in is cancelled by TAFE NSW.
 - The English Language Centre will refund 90 percent of the English language course fee paid if you withdraw from the course four weeks (28 days) or more before the commencement date of the course of study.
 - The English Language Centre will refund 80 percent of the English language course fee paid if you withdraw within the final four weeks (28 days) before the commencement date of the course of study.
- There will be no course fee refund on or after the commencement date of the course of study.
- If you provide TAFE NSW with false or misleading information or documents, or breach your visa conditions, no refund will be made. For visa conditions please refer to: [homeaffairs.gov.au/Trav/Stud/More/Visa-conditions/visa-conditions-students](https://www.homeaffairs.gov.au/Trav/Stud/More/Visa-conditions/visa-conditions-students)
- There is no refund for days designated as Australian/NSW public holidays.
- The processing fee, application fee, accommodation placement fee (including guardianship arrangement) and airport pick-up fee are not refundable.

6 OVERSEAS STUDENTS HEALTH COVER (OSHC)

- All international students are required to pay the visa length OSHC for themselves and all dependent members of their family staying with them in Australia.
- If you are currently studying in Australia and wish to renew your membership with your provider by yourself, you must provide a copy of your health fund membership records showing your name, membership number, OSHC provider and start date/end date of policy. You should be aware of the benefits/coverage you purchase if you make your own arrangements.
- TAFE NSW receives a commission from the health insurance provider for processing your OSHC payment.

7 INFORMATION REGARDING A DISABILITY (SECTION 10 OF THE APPLICATION)

- If you have a disability, relevant information is requested to establish whether you require the provision of additional services or facilities not required by students who do not have a disability.
- After consideration of your requirements, if the provision of these services or facilities would impose 'unjustifiable hardship', for example, a very high cost on TAFE NSW, your enrolment may be refused or additional fees may apply. You will be advised in writing of our decision.
- The provision of additional services or facilities should not be seen as a guarantee of successful completion of a course. TAFE NSW reserves the right to terminate a student's enrolment if the provision of reasonable adjustment is unsuccessful and further provision of services or facilities is determined as unjustifiable hardship.

8 PROVIDER DEFAULT

- If TAFE NSW is unable to deliver the accepted course at the agreed location, you will be offered a refund of the unused portion of the pre-paid fees. The refund will be processed to you within two weeks from the day you are advised of the course cancellation. Alternatively, you may be offered enrolment in another course/location by TAFE NSW.
- If an alternative course/location is offered, you have the right to choose whether you would prefer a refund of the unused course fees paid or to accept the place in the new course/location. If you choose to accept the new course/location, TAFE NSW will ask you to sign the acceptance of offer for the new course/location. In this case, the obligations of TAFE NSW would be discharged.
- The Tuition Protection Service (TPS) is an initiative of the Australian Government to assist international students whose education providers are unable to fully deliver their course of study. The TPS ensures that international students are able to either complete their studies in another course or with another education provider or receive a refund of their unspent tuition fees. For more information about TPS please refer to the following website: [tps.gov.au](https://www.tps.gov.au)

TAFE NSW INTERNATIONAL
TERMS AND CONDITIONS



9 EXPECTATIONS OF TAFE NSW

- TAFE NSW will:
- Provide the student with the same level of instruction and educational services as normally provided to other students enrolled at TAFE NSW.
- Provide an orientation program for the student.
- Monitor the welfare of the student and provide counselling and ongoing support while the student is enrolled at TAFE NSW.
- Appoint one or more TAFE NSW staff members to act as the point of contact for students who have access to up-to-date details of TAFE NSW’s support services for students.
- Pay commission to an agent registered with TAFE NSW who submits the student’s application.
- Monitor, record and assess the course progress of each student for the course in which the student is enrolled, as per the requirements of the National Code. Please refer to the following website:
internationaleducation.gov.au/Regulatory-Information/Education-Services-for-Overseas-Students-ESOS-Legislative-Framework/National-Code/nationalcodepartd/Pages/ExplanatoryguideD10.aspx

10 EXPECTATIONS OF STUDENTS AND PARENTS

- The student (and parent if the student is under 18 years of age) so far as relevant, will ensure the student complies with the following:
- Must keep a copy of the written agreement with TAFE NSW, and receipts of any payments of tuition fees or non-tuition fees.
- Must obtain a student visa and comply with student visa requirements.
- Must commence their enrolment on the date stated on the eCoE and if this is not possible, notify TAFE NSW in writing within 24 hours of the start date on the eCoE.
- Is subject to the requirements of the National Code and must comply with TAFE NSW enrolment conditions and requirements in respect of international students.
- For Vocational courses must meet TAFE NSW course requirements and meet the requirements of DE-DHA Course Progress Policy - refer to tafensw.edu.au/international for the policy and procedures.
- For Higher Education courses must meet TAFE NSW course requirements and meet the requirements of TAFE NSW Higher Education Course Progress policy - refer to website: tafensw.edu.au/international for policy and procedure.
- Must not engage in any activity that may endanger their safety or the safety of any other person.
- Must ensure requirements are met and maintained for accommodation and welfare arrangements for students under 18 years of age.
- Must pay the required fees when an offer of placement is accepted and fees owing before the commencement of each semester or any date agreed by TAFE NSW.
- Must notify TAFE NSW immediately if they wish to defer/suspend/withdraw from their course, or there are any changes to their visa status.
- Must update and/or notify TAFE NSW of their residential address, mobile phone number, email address and Emergency contact details within seven days of arrival and of any changes to these within seven days of any change.

11 DISCLAIMER

- TAFE NSW does not represent or guarantee that the student will:
- be accepted for enrolment at a specific TAFE NSW location
- successfully complete studies undertaken
- gain entry into further tertiary studies.
- TAFE NSW accepts no liability for any unexpected interruption in services through events such as staff strikes, electrical failure, floods and other similar events and which cause a cancellation of classes. Fee refunds will not be provided for classes missed due to such events.

12 COMPLAINTS PROCEDURE

- The complaints procedure contained in these terms and conditions of enrolment is available to a student in the event of a grievance in relation to a claimed refund. However, the written agreement, and the right to make complaints and seek appeals of decisions and action under various processes, does not affect the rights of the student to take action under the Australian Consumer Law if the Australian Consumer Law applies.
- If the student has a complaint about the services provided by TAFE NSW, attempts should be made to resolve the problem with relevant staff before lodging a written complaint.
- Full details of the complaints and appeals procedure is available at tafensw.edu.au/international
- So far as possible relevant complaints will be handled upon the same basis as complaints from a student or parent ordinarily resident in NSW.

13 BREACH OF TERMS AND CONDITIONS

- Any breach of terms and conditions may result in the termination of the student’s enrolment and may affect the student’s visa.

14 PRIVACY AND DISCLOSURE

- Personal information you supply and consent to being contacted about is to be used by TAFE NSW in connection with an application for a student to study in NSW. Provision of information is voluntary but, if not provided, the application may be hindered.
- TAFE NSW will not disclose personal information to outside parties, other than as provided in the application form, unless required by law, you consent or it is needed to prevent serious threat to a person’s health or safety. You can access and correct your personal information by contacting TAFE NSW.
- TAFE NSW may disclose personal information to the Commonwealth including the TPS, or State or territory agencies, health insurance provider, University Education Partners, pursuant to obligations under the ESOS Act 2000 and the National Code of Practice 2018 and to any contractor(s) engaged by TAFE NSW to provide advice or services in connection with any aspect of TAFE NSW’s international students program or operation.

15 STUDENT DECLARATION

- (If you are under the age of 18 this declaration must also be signed by your parent or guardian)
- I/We declare that all information provided with this application form is correct and that I/we have read and understand and agree to be bound by the Terms and Conditions relating to this application
- I/We agree that I/we have read the course outline on the website: tafensw.edu.au/international and understand the necessary pre-requisites, including English language requirements.
- I/We agree that in the event that false, inaccurate or misleading information is provided, TAFE NSW reserves the right to cancel the enrolment.
- I/We understand that the signed Terms and Conditions, the Offer Letter and Statement of Fees and the signed Acceptance form together constitute the written agreement with TAFE NSW for the purpose of the ESOS Act 2000 and the National Code 2018.
- I/We agree to pay the applicable tuition fees set out on tafensw.edu.au/international prior to the commencement and subsequent semesters of the nominated studies. Additionally I/we agree to be jointly or severally liable to the debt arising from fees owing.
- I/We agree that when I/the student am/is accepted for enrolment in a TAFE NSW location, I/we must comply with and ensure that the student complies with the terms and conditions of enrolment and the TAFE NSW Student Discipline Policy.
- I/We understand and consent that personal information provided by the student to TAFE NSW may be made available to the Commonwealth including the TPS, or State or territory agencies, health insurance provider, University Education Partners, pursuant to obligations under the ESOS Act 2000 and the National Code of Practice 2018 and to any contractor(s) engaged by TAFE NSW to provide advice or services in connection with any aspect of TAFE NSW’s international students program or operation.
- I/We give consent for TAFE NSW to obtain the student’s Visa Entitlement Verification Online (VEVO) information from DHA for the purposes of verifying any information provided by me to TAFE NSW in connection with my application, enrolment, payment of fees and visa matters.
- I/We hereby consent to being contacted in connection with this application and any subsequent enrolment by text message, email or other electronic means and note that I/we may, at any time, opt out of being contacted by any such electronic means by contacting TAFE NSW and so advising.
- I/We agree that if there is any difference in meaning of provisions of the English version and any translated version of this form or the terms and conditions provided to me/us, the English version is to prevail.

Student Signature

Print Name Date (DD/MM/YYYY)

Parent Signature

Print Name Date (DD/MM/YYYY)





CRICOS Provider Name: TAFE NSW – Technical and Further Education Commission

CRICOS Provider Code: 00591E

RTO: 90003

Printed September 2018



tafensw.edu.au/international