

Achieve more
progressing from

ONCAMPUS
PARIS



ONCAMPUS
PARIS

KEDGE
BUSINESS SCHOOL

ONCAMPUS Paris is proud to work in partnership with KEDGE Business School to offer high-quality preparation programmes for international students on campus in Paris.

KEDGE Business School is a triple accredited business school and Grande École that ranks among the best business schools in Europe.

KEDGE has four main campuses in France, located strategically in the vibrant cities of Paris, Bordeaux, Marseille and Toulon. All campuses are modern and equipped with state-of-the-art facilities enabling it to provide a first-class education and a rewarding life experience to students from all over the world.

Students can study select undergraduate and a wide range of courses at postgraduate level, within six main subject areas: finance, international trade, marketing, purchasing, supply chain and wine.



**Just over
an hour**
to **London or
Switzerland** by aeroplane
as well as great train links to
other cities such as Brussels
and Amsterdam



More of the world's top 100 most innovative companies are in France than any other European country.

Contents

+ About KEDGE Business School

School highlights	04
Programme highlights	06
Progression degrees	10

+ About ONCAMPUS

How ONCAMPUS works	18
Your route to a degree	19
Our programmes:	
International Foundation Programme (IFP)	20
International Pre-Master's Programme (IPMP)	22

+ About Student Life

Guide to Paris, France	24
Student Wellbeing	28

+ Applying

Next steps	30
------------	----



School Highlights

KEDGE Business School research professors collaborate across five Centres of Excellence and four Centres of Expertise, promoting research through innovative teaching and learning that underpin KEDGE's undergraduate and postgraduate programmes.



Triple Crown Accreditation

KEDGE Business School is triple accredited and ranks among the best business schools in Europe

Ranked
9th
best French business school

Financial Times 2021

Ranked 
2nd
best French business school for research in Business Administration

Shanghai World Global Ranking 2021

KEDGE Business School

a sesquicentennial school with an international reach



OVER
14,800
students worldwide,
23% of whom are international

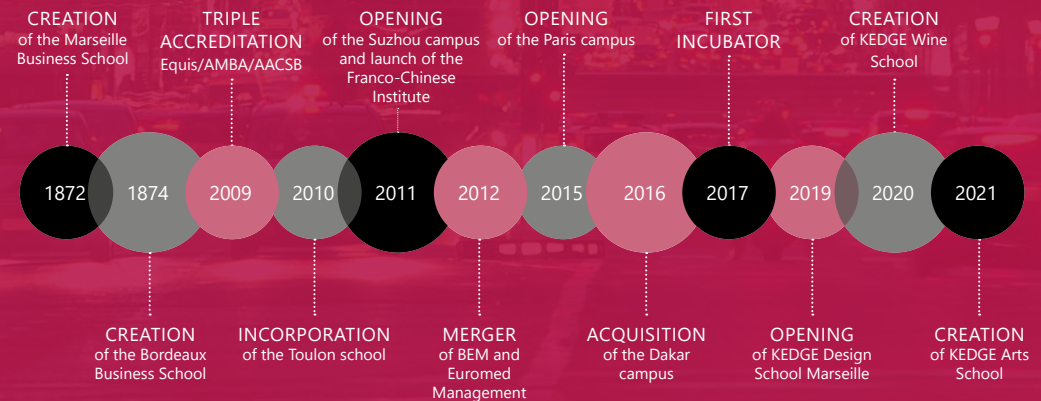
95%
of students are hired within four months of graduating

275 partner universities
worldwide offering exchange or double degree opportunities

Nearly
50%
of KEDGE professors are international



KEDGE HISTORY



Programme Highlights

KEDGE Business School offers a portfolio of 38 management and design programmes for students and industry professionals. KEDGE also provides customised educational programmes for businesses at national and international levels.



International BBA

The **most international** four year undergraduate degree in France

KEDGE Bachelor's Voted 5th Best French Bachelor

Le Parisien Etudiant 2022



MSc International Business ranked



1st

EdUniversal International 2022



MSc ISLI - Global Supply Chain Management

Ranked 2nd

EdUniversal International 2022

MSc MVS Wine & Spirits Management

Ranked 1st

EdUniversal International 2022

MSc International Trade and Logistics in France

Ranked 5th

EdUniversal International 2022

No. 1



e-commerce programme for MSc Digital Marketing & Sales with students encouraged to earn Google Ads and Google Analytics certifications

French Tech 2021 Ranking

MSc Sustainable Finance

Ranked 4th

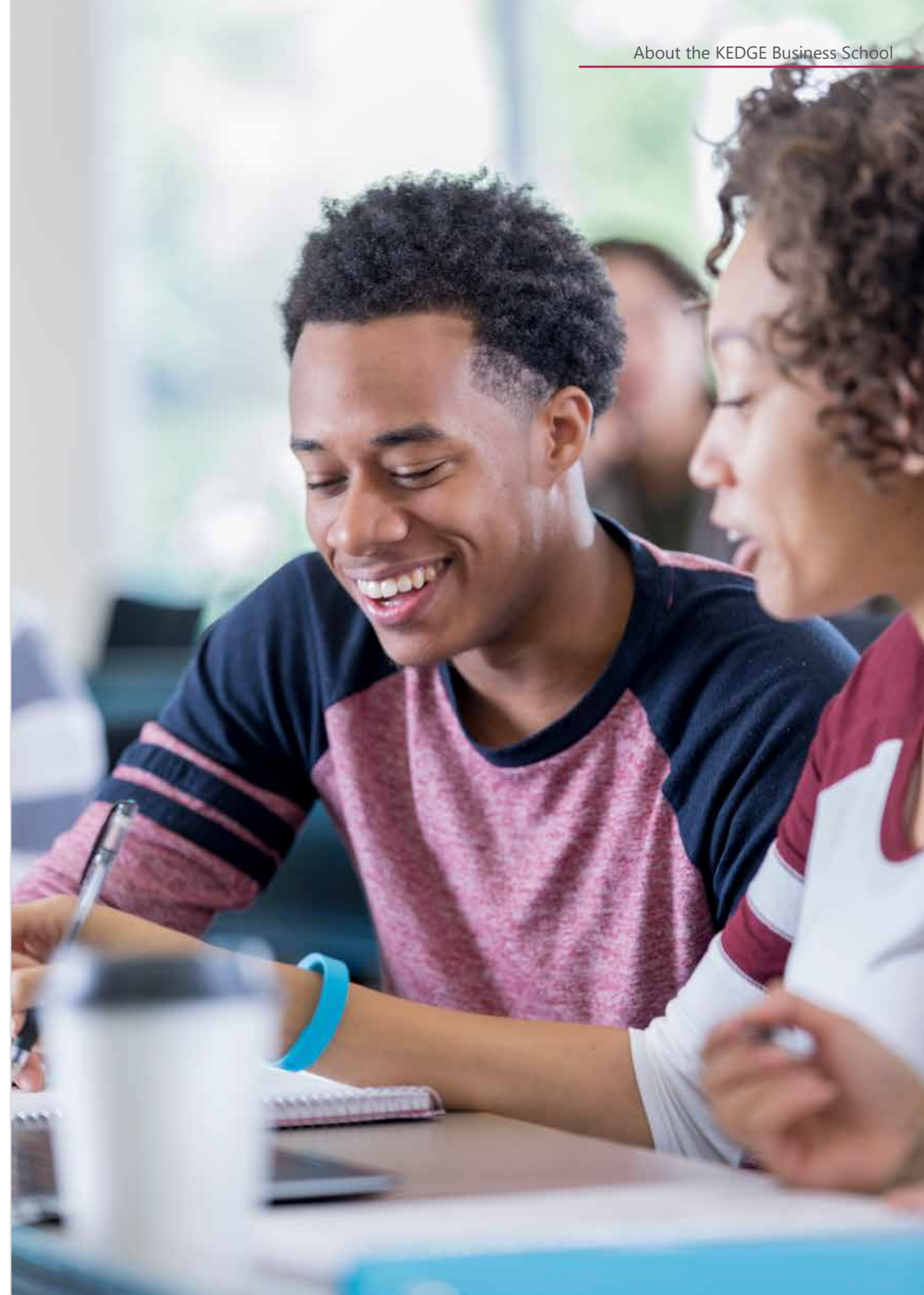
is the leading programme in Europe to develop this dual expertise

EdUniversal 2022

MSc International Sport & Event Management

Ranked 2nd

EdUniversal 2022

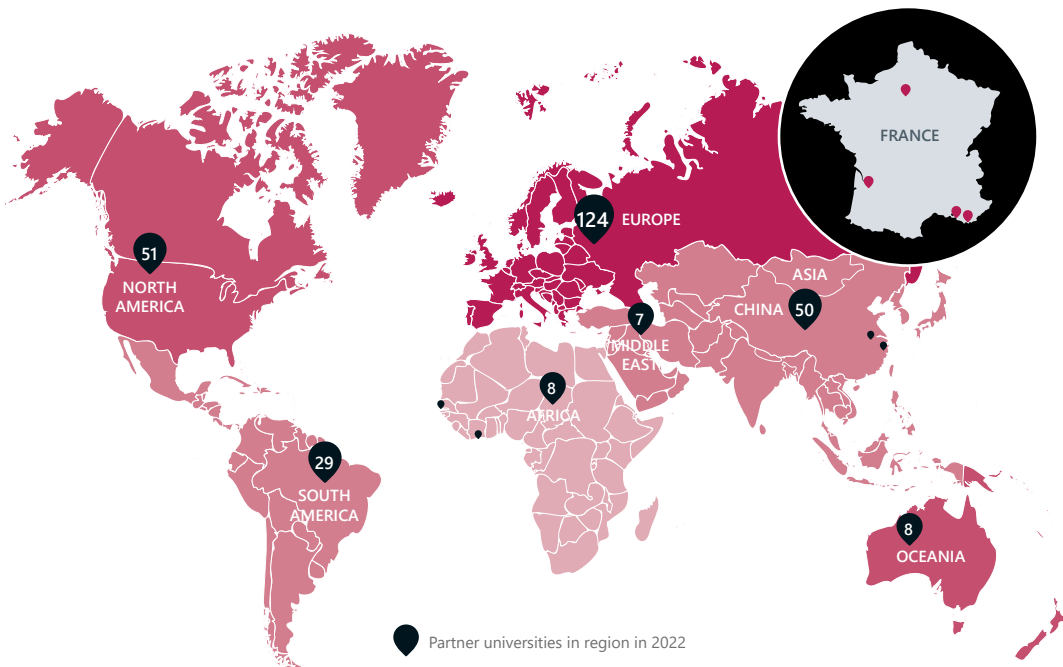


An International Experience



With an established network of 275 partnerships with renowned foreign institutions, KEDGE offers a wide range of opportunities for students to combine study and experience abroad, through exchange programmes and double degrees.

Students develop the tools to understand cultural, social and economic contexts in order to be confident in the professional world, immerse themselves in a different culture, experience different teaching methods, develop openness and agility, acquire a global perspective, improve or learn a foreign language and create an international network.



Entrepreneurship at KEDGE

With Entrepreneurship firmly embedded in its pedagogy, KEDGE Entrepreneurship was created to develop the entrepreneurial know-how of students. KEDGE offers three Entrepreneurship support programmes for beginners or experienced entrepreneurs, with many KEDGE programmes providing training in entrepreneurship as part of their programme.



Business Creator:

For students who want to be an Entrepreneur and who have an idea.

Students will develop skills on startup methods and entrepreneurial posture and discover the principles of the lean startup approach.



Business Nursery:

For those who want to get started.

KEDGE gives support in the creation of a startup, confronting the product or service with the reality of the market by putting Entrepreneurs in touch with KEDGE partner companies. KEDGE supports facilitate obtaining funding for the seed phase (France Initiative, BPI France, Crowdfunding) via KEDGE institutional partners and companies.



Business Accelerator:

For entrepreneurs looking for financing help.

Entrepreneurs accelerate the development of startups before or after fundraising on different issues: marketing, strategy, web, business development, product, communication with funders and recruitment.

1000 
students trained in
Entrepreneurship
per year

3200
Alumni
Entrepreneurs

120 
projects supported
per year

Paris Campus

KEDGE

BUSINESS SCHOOL



Located in the heart of the city in the exceptional Lumière Building, one of Paris's largest business centres (and business ecosystems), KEDGE Paris is a place of versatility, designed as a bridge between innovation and people, placing entrepreneurship at the centre of the school's philosophy.



Located within the 135,000 m² Lumière building which contains 33 classrooms, 12 brain bubbles and one amphitheatre seating up to 80 students.



KEDGE shares facilities with major companies including Natixis, SNCF, ING Direct, Société Générale and the Ministry of the Interior.



Immersive rooms enable students to work on practical case studies using giant screens streaming classes or conferences held on the school's other sites.

Undergraduate degree you can progress to

ONCAMPUS PROGRESSION PATHWAY:
BUSINESS, ECONOMICS, FINANCE, MANAGEMENT, LAW & POLITICS

Pass mark for progression
(in academic modules): 50%

English Required
IELTS equivalent: 5.5

KEDGE Bachelor

Master of Science degrees you can progress to

ONCAMPUS PROGRESSION PATHWAY:
BUSINESS

Pass mark for progression
(in academic modules): 50%

English Required
IELTS equivalent: 6.0

MSc Arts & Creative Industries Management

MSc Marketing

MSc Business Transformation for Sustainability

MSc Sustainable Finance

MSc International Business



Marseille Campus

KEDGE
BUSINESS SCHOOL

KEDGE Marseille is based at the Luminy campus nestled on the edge of the Calanques National Park. The campus is one of the leaders in the field of education, providing sustainable, innovative facilities and teaching equipment.



21,000m² campus, 57 classrooms, 6 amphitheatres, 220 offices for associations, 1 fitness centre, 4 catering areas, 2 Hubs that facilitate creation, collaboration and co-working digital libraries and a **business incubator and Design School**.



22 Brain bubbles, spaces dedicated to collective reflection sessions.



The Daniel Carasso KEDGE Accelerator is a space dedicated to business startups, equipped with the latest technologies. Set up on 500m² on the Marseille Campus, this online platform is committed to supporting hundreds of projects every year.

Undergraduate degree you can progress to

ONCAMPUS PROGRESSION PATHWAY:
BUSINESS, ECONOMICS, FINANCE, MANAGEMENT, LAW & POLITICS

International BBA

Pass mark for progression
(in academic modules): 50%

English Required
IELTS equivalent: 5.5

Master of Science degrees you can progress to

ONCAMPUS PROGRESSION PATHWAY:
BUSINESS

MSc Audit and Performance Management*

MSc Corporate Finance

MSc Digital Marketing & Sales

MSc Innovation, Transformation, Entrepreneurship

Pass mark for progression
(in academic modules): 50%

English Required
IELTS equivalent: 6.0

MSc International Business

MSc International Sport & Event Management

MSc International Trade & Logistics

MSc Marketing

*This programme is partly taught in French.

Postgraduate degree you can progress to

ONCAMPUS PROGRESSION PATHWAY:
BUSINESS

Master in Management Grande École

Pass mark for progression
(in academic modules): 50%

English Required
IELTS equivalent: 6.0



Marseille is a vibrant city surrounded by the mountains and the Mediterranean Sea

Closest international airport is **1 hour away**



Marseille is one of the most multicultural French cities

2nd largest French city known for its cultural dynamism and economic attractiveness



Marseille has the largest European **National Park**



Bordeaux Campus

KEDGE
BUSINESS SCHOOL



Located on the Talence campus 30 minutes away from the city centre by tram and spread over 35,000m², the campus is designed to provide the most innovative facilities to meet students' needs. Bordeaux has experienced a strong growth of highly skilled professionals, and the services sector accounts for 86% of its economic fabric. As France's top ranked city for quality of life and attractiveness*, Nouvelle Aquitaine is France's leading region for job creation since 2009 with business hubs in:

tertiary professional education (insurance, banking, marketing, communication)
digital, aeronautics, health-biotech, laser optics, green growth and the wine sector.



49 lecture rooms, language labs, computer rooms, 20 amphitheatres with a **capacity of 60 to 500 seats** for teaching, seminars or meetings.



A trading room animated by professors and by the finance transaction association.



The Business Nursery and the **Business Accelerator**, both dedicated to the entrepreneurship development.

Master of Science degrees you can **progress to**

ONCAMPUS PROGRESSION PATHWAY:
BUSINESS

Pass mark for progression
(in academic modules): 50%

English Required
IELTS equivalent: 6.0

MSc Banking and Finance

MSc Data Analytics for Business

MSc International Business

MSc ISLI - Global Supply Chain Management

MSc MAI - International Purchasing and Innovation Management

MSc Marketing

MSc MVS - Wine and Spirits Management

Students require IELTS 6.5 or equivalent for progression

Postgraduate degree you can **progress to**

ONCAMPUS PROGRESSION PATHWAY:
BUSINESS

Pass mark for progression
(in academic modules): 50%

English Required
IELTS equivalent: 6.0

Master in Management Grande École



Undergraduate degrees you can progress to

Students who meet the specified entry criteria and pass a Jury Interview are guaranteed progression at KEDGE Business School.

ONCAMPUS PROGRESSION PATHWAY: BUSINESS

Pass mark for progression
(in academic modules): 50%

English Required
IELTS equivalent: 5.5

International BBA

KEDGE Bachelor

Master of Science degrees you can progress to

Students who meet the specified entry criteria and pass a Jury Interview are guaranteed progression at KEDGE Business School.

ONCAMPUS PROGRESSION PATHWAY: BUSINESS

Pass mark for progression
(in academic modules): 50%

English Required
IELTS equivalent: 6.0

MSc Arts and Creative Industries Management

MSc International Sport & Event Management

MSc Audit and Performance Management*

MSc International Trade & Logistics

MSc Banking and Finance

MSc ISLI - Global Supply Chain Management

MSc Business Transformation for Sustainability

MSc MAI - International Purchasing and Innovation Management

MSc Corporate Finance

MSc Marketing

MSc Data Analytics for Business

MSc MVS - Wine and Spirits Management
Students require IELTS 6.5 or equivalent for progression

MSc Digital Marketing & Sales

MSc Sustainable Finance

MSc Innovation, Transformation, Entrepreneurship

MSc International Business

*This programme is partly taught in French

Postgraduate degree you can progress to

Students who meet the specified entry criteria and pass a Jury Interview are guaranteed progression at KEDGE Business School.

ONCAMPUS PROGRESSION PATHWAY: BUSINESS

Pass mark for progression
(in academic modules): 50%

English Required
IELTS equivalent: 6.0

Master in Management Grande École



How ONCAMPUS Works

Our programmes at **ONCAMPUS** Paris are designed for international students who do not meet the requirements for direct entry to study at KEDGE Business School.



Increase your English language level

- Academic writing skills
- Academic reading skills
- Presentation and discussion skills
- Listening and note taking

Improve academic grades and study skills

- Additional year of study equivalent to 13 years of UK study for undergraduate degree
- Demonstrate academic level to meet KEDGE requirements
- Present higher grades in Pathway programme than achieved at high school for undergraduate entry
- Learn the study skills essential for success at KEDGE Business School
- Additional research study skills for Master's students

Expert progression support

- Expert guidance on which degree to progress to
- One-to-one support sessions
- Faculty visits and meetings

Progress to degree

ONCAMPUS gives you...

Outstanding teaching and support

Through every step of your journey with us, you will be supported by highly qualified teachers and support staff, both inside and outside the classroom.

Your personal tutor will meet with you regularly to ensure you are on track to pass the programme and progress to your chosen degree.

Your personal tutor is also there to help you with any issues you might have inside or outside the classroom.

A proven track record of success

ONCAMPUS is part of Cambridge Education Group, one of the UK's leading university pathway providers since 1952.

Cambridge Education Group was the first private institution to offer university foundation programmes in the UK in 1985, and successfully prepares thousands of students for the UK, Europe and U.S. top universities every year.

Part of the Business School from day one

The **ONCAMPUS** centre is located at the heart of KEDGE Business School, close to all of its facilities.

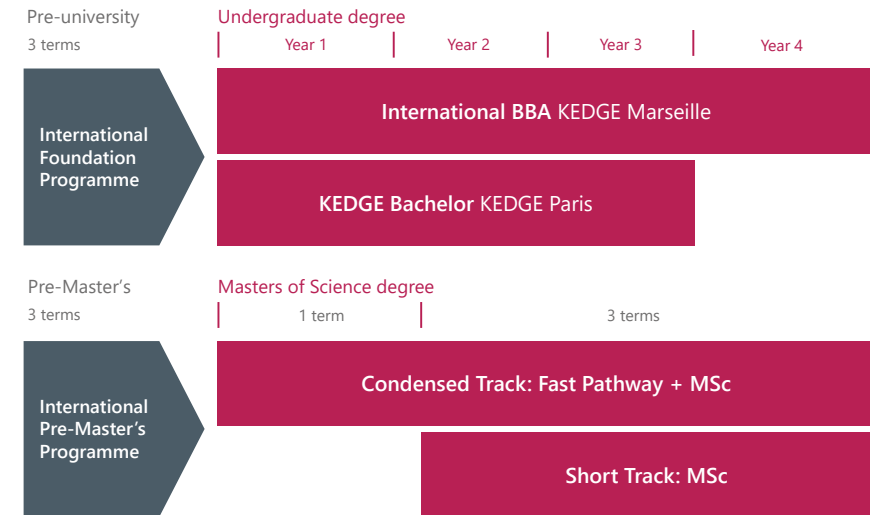
You will receive a student card, and with it you will have access to all the Business School's facilities, clubs and societies while you study your **ONCAMPUS** programme.

You will meet your course leader at the Business School before you start your degree, and have the opportunity to try out some of the excellent facilities.

Your route to a degree at KEDGE Business School

ONCAMPUS Paris offers guaranteed progression* to a range of undergraduate and postgraduate degrees at KEDGE Business School, on successful completion of our Foundation programmes.

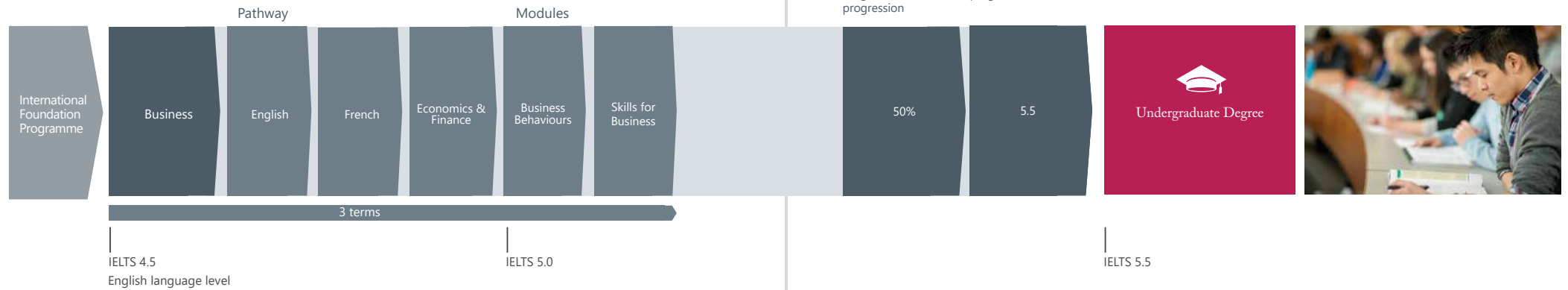
*subject to meeting the specified entry criteria



International Foundation Programme (IFP)

This programme gives guaranteed progression¹ to Year 1 of two undergraduate programmes at KEDGE Business School.

Degree progression route



Entry criteria

English level: From **4.5 IELTS** or equivalent

Minimum age: **18**
Students must be 18 at the start of the IFP.

Academic requirements: **11-12 years**
Successful completion of 11-12 years of schooling with good grades. Please see www.oncampus.global for country-specific academic entry requirements.

¹ Subject to achieving the pass mark for progression, detailed above.

For progression degrees, see page 16

Dates	Number of terms	Business tuition fee	Progressing to undergraduate degree starting in
26th September 2022 - 04 June 2023	3	€18,765	September 2023
04th January 2023 - 11 August 2023	3	€18,765	September 2023

Module delivery mode may consist of some blended/online hours. For more information on module content visit our website www.oncampus.global

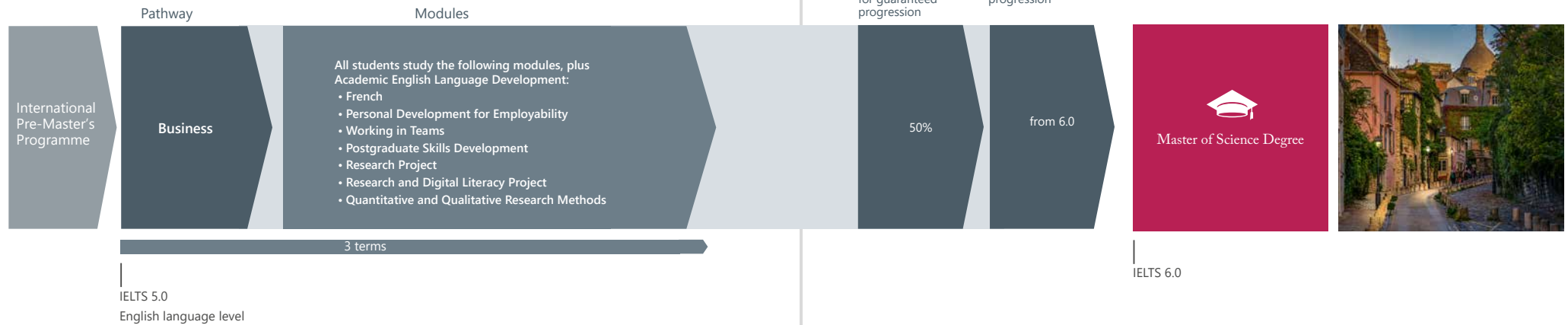
All programmes are subject to a €300 registration fee and €2,200 deposit which will be offset against the last term's fees.



International Pre-Master's Programme (IPMP)

The Master's Foundation Programme offers guaranteed progression¹ to a wide range of business-related Master's degrees at KEDGE Business School.

Degree progression route



Entry criteria

English level: From **5.0 IELTS** or equivalent

Minimum age: 21+

For guaranteed progression:

- 50% in academic subjects
- 6.0 IELTS or equivalent

¹ Guaranteed progression is subject to meeting the specified entry criteria shown plus successful Jury interview.

Academic requirements: Degree Successful completion of Bachelor's degree or equivalent from a recognised university.

For progression degrees see page 16

Dates	Number of terms	Tuition fee	Progressing to Master's degree starting in
26th September 2022 - 04 June 2023	3	€18,975	September 2023
04th January 2023 - 11 August 2023	3	€18,975	September 2023

All programmes are subject to a €300 registration fee and €2,200 deposit which is offset against the last term's fees. Module delivery mode may consist of some blended/online hours. For more information on module content visit our website www.oncampus.global.



Guide to Paris, France



As the capital city of France, Paris, is renowned for its romance, culture and iconic landmarks. It is as diverse as it is sophisticated, with a population of over two million people. Paris is also one of Europe's most visited cities, making it a very popular tourist destination.



Montmartre

Crowned by the Sacré-Coeur Basilica, historic Montmartre is in the 18th arrondissement and one of Paris' most charming and colourful districts. It is famed for its cobblestone streets, artistic past (and present), and central hill standing at 427 ft tall.

Business District La Défense

Located in the west part of the city, La Défense is one of the major business districts in Europe, home to the head offices of the biggest CAC 40 companies, SMEs and startups.



Champs-Élysées

The most beautiful and well-known avenue in Paris. It connects the Arc de Triomphe with the Place de la Concorde and is considered one of the world's most famous commercial streets.



Cruise the Seine

Paris is divided by this great river reaching 777 kilometres long. Board a boat for a scenic, panoramic view of the city from the water.



Accor Arena - Bercy

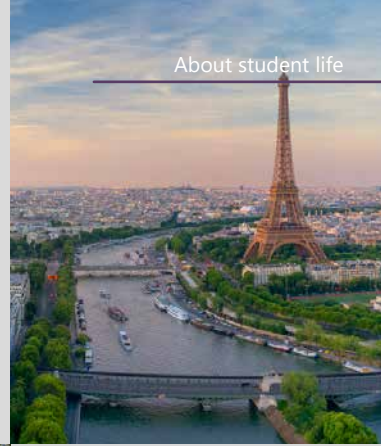
is an indoor sports arena and concert hall located in the neighborhood of Bercy right on the doorstep of KEDGE Business School

Release your inner child and spend a day at one of the world's most renowned theme parks -

Disneyland Paris



Immerse yourself in culture with Paris being home to some of the most famous museums, including the largest museum on earth the Louvre, housing the world-famous Mona Lisa.



About student life

Fashion

Paris is home to Haute Couture houses such as Dior and Givenchy and luxury fashion brands such as Saint-Laurent, Celine and Hermes.



Enjoy the French cuisine, considered some of the best in the world.



ONCAMPUS Paris

CITY GUIDE PAGE



oncampus.global/Paris-city-guide



Arc de Triomphe



Eiffel Tower



Sacré-Cœur



Louvre



Musée d'Orsay



Notre Dame



Accor Arena

DIGITAL **MAP**



Student Support Wellbeing

At ONCAMPUS we believe looking after your mental health and emotional wellbeing is vitally important, in order to be successful in the classroom and beyond.

Focus

Navigate your schedule, workload & deadlines. Keep an open mind and prepare to participate and collaborate.

Learn

Learning is a huge part of your ONCAMPUS experience, from the skills you develop in the classroom to the cultures you'll discover in a new place.

Rest

Making sure you get enough rest will help you settle into your new home and allow you to study to the best of your abilities.

Eat

To keep you alert, remind you of home or discover something new!

Explore

Walking, running and cycling are all great ways to figure out the scale and pace of any new location.

Relax

Discover local hot-spots and quiet little book nooks. Block out useful periods of time to simply down tools and move slowly.

Exercise

Feed your mind, get involved in university life and make new friends.

Communicate

Good relationships with those around you will help to build a sense of belonging.

Friends and family

Establish a group chat that's exclusively aimed at open communication with those you trust the most.

Fresh start

Build a support network with your new classmates and celebrate positive experiences.

We're here to support you however we can. Take a look at some of these useful links and learn more at oncampus.global

KEDGE Business School
Wellness Director:
Marion Bulot
marion.bulot@kedgebs.com

Next Steps



1 Submit your application by one of the following methods:

- Online: www.oncampus.global
- Email: admissions@oncampus.global



Please remember to include all relevant documentation:

- Academic transcripts (with official translations, if not originally in English)
- Evidence of English Language level
- Copy of passport
- Explanation of any study gaps
- Copies of any previous/current visas

Additional documentation may be required depending on the course. Our Admissions team will contact you should this be the case.

2 Our Central Admissions team will review your application.



We will send you an offer letter that will list any outstanding conditions. We will remove any conditions that have already been met.

If we think the course is not right for you, we will suggest an alternative.

If we have any queries about your application, we will contact you for further information.

3 To accept your place on the course, you will need to meet all the remaining conditions, including payment of the deposit/registration fee or proof of government sponsorship. We can only confirm your place once all conditions have been met, although once the deposit is paid, we will hold a place for you.



Please note that if you require a visa to study with us, you may need to provide additional evidence to comply with the visa regulations in France. These are the requirements of the government and not of ONCAMPUS. Your assistance in meeting these requirements is much appreciated.

4 Once you have paid your deposit and met all the conditions of the offer, we will confirm your place and send you a Certificate of Registration (CoR).



5 If you need to apply for a visa to study in France, you will need to include your CoR as part of the supporting documents. You can start your visa application three months before the start of the course. It is your responsibility to obtain a visa before you can travel to join the course. If you do not have a valid visa for studies in France, you will not be able to join the course. Please contact us should you require any assistance or guidance with your visa application.



6 We will send you pre-arrival information.



Pre-arrival information will include details on arriving in centre and what to bring with you and accommodation options. An accommodation application form will be included in the pre-arrival information. You should complete the form, selecting your preferred option, and return it to ONCAMPUS Paris by email to liveinParis@oncampus.global.



Follow our latest news

- facebook.com/oncampusglobal
- instagram.com/oncampus_global
- youtube.com/oncampus_uusa
- linkedin.com/company/oncampus.global

HEAD OFFICE

Cambridge Education Group

51-53 Hills Road, Cambridge,
CB2 1NT, United Kingdom

Telephone: +44 (0)1223 345698

Email: admissions@oncampus.global

Web: www.oncampus.global

CENTRE ADDRESS

ONCAMPUS PARIS

KEDGE Business School

Bâtiment Lumière,
40 Av. des Terroirs de France,
75012 Paris, France



www.carbonbalancedprinter.com
Healeys Print Group - Reg. 2108

Information in this brochure is correct at time of issue in April 2022. ONCAMPUS and the University Partner reserve the right to alter, reschedule or close courses which do not remain viable; students will be informed. Please check our website at www.oncampus.global for updated information.

ONCAMPUS
PARIS

Visit www.oncampus.global

