

Study at **ACG** *in New Zealand!*

Your complete education pathway
from kindergarten to university
or skills for your career



International Student Prospectus

2017 | acgedu.com

Contents

Welcome to ACG

ACG Study Pathways	04
ACG in New Zealand	05
Discover Auckland with ACG	06
Discover Wellington with ACG	08
Discover New Zealand with ACG	10
Student services	12
Your new home	13

English and University Pathways

ACG English School	14
The University of Auckland Certificate in Foundation Studies	16
AUT University Certificate in Foundation Studies	18
Victoria University of Wellington Foundation Studies Programme	20

School Education

ACG Parnell College	24
ACG Senior College	25
ACG Strathallan	26
ACG Sunderland	27
ACG Tauranga	28

Tertiary and Careers Programmes

ACG Yoobee School of Design	30
New Zealand School of Tourism	32
NZMA	34
New Zealand Career College (NZCC)	36
ACG Internships	38
2017 Starting Dates	40

Universities, visas and work rights

New Zealand Universities	42
University entry requirements Scholarships	43
Visa requirements	44
Working in New Zealand	44
Student work rights	45
Living costs	46
Medical and travel insurance	46



ACG welcomes you

Welcome to New Zealand where an exciting new study life awaits!

New Zealand is a modern country with a rich cultural heritage. Comparable in size and shape to the United Kingdom or Japan, it is a stable English-speaking democracy with a population of approximately 4.7 million people, making it one of the least crowded countries in the world.

New Zealand consists of two main islands in the South Pacific, three hours east of Australia by plane or nine to ten hours direct flight from Singapore. Internationally, the country is known for the beauty of the landscape. The cities are clean, open and lively, with Auckland in particular showing many cultural influences.

New Zealanders are well-travelled, outward looking and famously hospitable people with a lively interest in other cultures. An education here is frequently the beginning of lifelong friendships.

New Zealand is a rich mix of cultures - including European, Maori, Asian and Pacific peoples. New Zealanders have made significant

Global Peace Index 2016*	
Rank	Country
1	Iceland
2	Denmark
3	Austria
4	New Zealand
5	Portugal
6	Czech Republic
7	Switzerland
8	Canada
9	Japan
10	Slovenia

**visionofhumanity.org*

contributions to the world of science and technology, creative arts, medicine, conservation, food, wine, sports and fashion.

Beyond the warm welcome, you will find a place where safety and security are valued.

New Zealand is ranked 4th on the Global Peace Index for the most peaceful nation on earth.

New Zealand is also one of the world's top ten countries to live in according to the latest United Nations' index aimed at measuring development.

hdr.undp.org/en/data

New Zealand's education system is based on the prestigious British system. We offer world-class facilities, resources and teaching staff. Our qualifications are valued and are transferable throughout the world.

studyinnewzealand.com

newzealand.com

stats.govt.nz

newzealandnow.govt.nz

minedu.govt.nz



What is ACG?

Outstanding educational services with proven quality and results

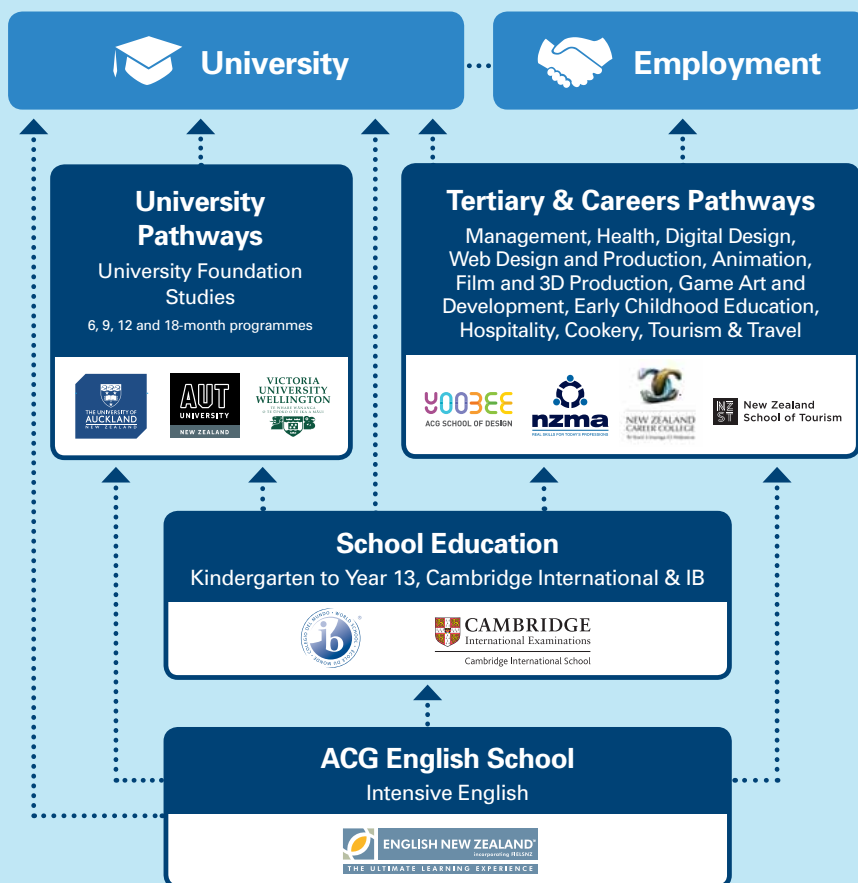
ACG is New Zealand's largest quality provider of private school education, university pathways and tertiary skills-focused programmes for your career.

ACG opened its first school in 1995 with a new concept in education; one that would make a difference to people who wanted to advance their lives and their futures.

Today, ACG comprises 15 schools and tertiary colleges in three countries and offers a comprehensive range of academic and career pathways.

Each year, almost 3,000 international students from approximately 50 different countries come to New Zealand to study at ACG.

ACG Study Pathways



ACG in New Zealand

ACG offers a wide range of study choices in 8 New Zealand cities

School Education

- ACG Parnell College
- ACG Strathallan
- ACG Senior College
- ACG Sunderland

- ACG Tauranga

- Zig Zag Zoo Preschools

English and University Pathways

- ACG Pathways Campus

Auckland

Tauranga

Hamilton

Rotorua

Wellington

Christchurch

Queenstown

Dunedin

Tertiary and Careers Programmes

- Design and Multimedia**
- ACG Yoobee School of Design

- Tourism and Travel**
- New Zealand School of Tourism

- Hospitality, Cookery and Business**
- NZMA

- Management and Early Childhood**
- New Zealand Career College (NZCC)

newzealand.com
studyinnewzealand.com



Discover Auckland with ACG

Study in Auckland, one of the world's top three cities*

Auckland is New Zealand's largest city and is home to 1.5 million people.

It is also the country's economic and education hub with campuses of three of New Zealand's eight universities: The University of Auckland, AUT University and Massey University.

Auckland is a modern and vibrant city, well known for its mild climate, glorious scenery and very friendly people. The excellent beaches, swimming and sailing are popular

pastimes for Aucklanders and when you see the number of yachts in the harbours you will understand why Auckland is known as 'The City of Sails'.

Auckland is ranked third out of 221 world cities for quality of life.*

aucklandnz.com
aucklandcouncil.govt.nz
aucklandnz.com/study

*Mercer Consulting Quality of Living Survey 2016.

ACG's convenient Auckland locations

With many ACG campuses strategically located around Auckland, there is one within easy reach for students in any area.

Henderson
20 mins
from CBD



ACG Sunderland



NZ Career College



ACG Senior College



ACG Pathways Campus

University of Auckland

2016 Mercer Annual Worldwide Quality of Living Survey*

Rank	City	Country
1	Vienna	Austria
2	Zurich	Switzerland
3	Auckland	New Zealand
4	Munich	Germany
5	Vancouver	Canada
6	Düsseldorf	Germany
7	Frankfurt	Germany
8	Geneva	Switzerland
9	Copenhagen	Denmark
10	Sydney	Australia

*mercer.com



NZ School of Tourism
2 campus locations



NZMA

Sylvia Park

15 mins from CBD

Auckland Airport

20 mins from CBD



ACG Yoobee School of Design



Empire Apartments



ACG Parnell College

Karaka

20 mins from CBD



ACG Strathallan



AUT University



Discover Wellington with ACG

Study in New Zealand's Capital City



Wellington is the capital city and second most populous urban area of New Zealand, with nearly 400,000 residents. Sitting on a stunning natural harbour and surrounded by lush green hills, Wellington is a beautiful, vibrant, safe and cosmopolitan city and region.

It is a destination of choice for smart, ambitious and imaginative students from all over the world, offering an unlimited opportunity to sample the language,


culture and way of life. Many foreign embassies are located here.

It is compact and easy to get around on foot, or using its excellent public transport system.

Lonely Planet has referred to Wellington as 'The coolest little capital in the world', it is also one of Australasia's top three cities for quality of living.*

studyinwellington.com

**mercer.com*

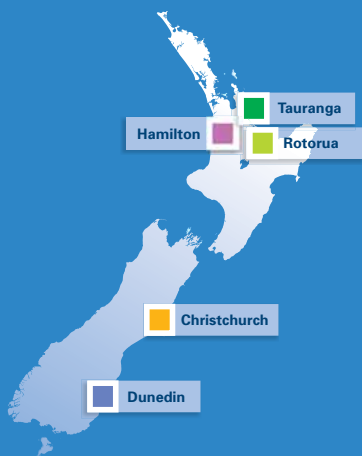


NZ School of Tourism
2 campus locations

**ACG Yoobee School
of Design**

NZ Career College

**Victoria University
of Wellington**
Te Aro Campus



Discover New Zealand with ACG

**Choose from a range of exciting
ACG study locations throughout
the rest of New Zealand**



Hamilton

- New Zealand School of Tourism
- NZMA

Hamilton is New Zealand's largest inland city, located on the banks of the Waikato River, 130 kilometres south of Auckland.

Hamilton enjoys a welcoming spirit, rich history and a vast array of local attractions. The city of Hamilton boasts stunning

gardens, plentiful shopping and a popular nightlife and restaurant scene including award-winning eateries and exciting entertainment.

Being in the hub of central North Island, students have easy access to iconic attractions such as Hobbiton, Waitomo Caves, Raglan's surf coast and much more.

studywaikato.co.nz



Tauranga

- ACG Tauranga
- ACG Yoobee School of Design*

Tauranga is the largest city in the Bay of Plenty and one of the fastest growing population centres in the country. It is also just a 15-minute drive from one of New Zealand's most popular beach towns, Mount Maunganui.

Downtown Tauranga has several

historically significant areas to view. The Strand waterfront area is modern and always buzzing, and is home to a number of cafés, restaurants and pubs.

Tauranga's harbour is in evidence almost everywhere you go. Fishing, sailing, diving and dolphin tours are easy to arrange.

educationtauranga.co.nz

**A limited number of programmes.*

Rotorua

■ New Zealand School of Tourism

Rotorua is located in the heart of the North Island, surrounded by mountains, rivers, native forests and lakes. Rotorua is known for bubbling mud pools, shooting geysers and natural hot springs, as well as showcasing New Zealand's fascinating Maori culture.

Walking, mountain biking, horse riding, swimming and fishing are

some of the best ways to see the wildlife and breath-taking scenery.

Rotorua boasts a thermally-heated central city alfresco dining zone known as Eat Street, plus other popular food and craft markets.

Rotorua is less than two hours to the Mt Ruapehu ski fields and less than an hour from the nearest beach towns.

rotoruanz.com



Christchurch

■ ACG Yoobee School of Design ■ New Zealand School of Tourism

Christchurch is the largest city in the South Island of New Zealand, and the country's third-most populous urban area. It has the fastest growing economy in New Zealand and offers a diverse range of work opportunities for international students.

Christchurch was number two on The New York Times's '52 Places to Go' in 2014.

International students in Christchurch are valued and embraced for the cultural diversity, international perspectives and life-long friendships they bring.

christchurcheducated.co.nz



Dunedin

■ New Zealand School of Tourism

Dunedin is New Zealand's city of the south. Known as the Edinburgh of New Zealand, it wears its Scottish heritage with pride. Surrounded by dramatic hills and at the foot of a long harbour, Dunedin is one of the best-preserved Victorian and Edwardian cities in the Southern Hemisphere. Dunedin's character is influenced

enormously by its students. Making up 20% of the population they help support entertainment and cultural options well beyond the city's size.

On Dunedin's doorstep you will find incredible wildlife including the world's rarest penguins and the world's only mainland breeding colony of Royal Albatross.

educationdunedin.co.nz



Student services

ACG provides for the educational needs and welfare of each student

The tutor system*

In all programmes, each student is assigned a tutor.

The tutor supervises the study programme and provides personalised support to ensure that each student's academic potential is maximised.

The tutor meets regularly with each student, monitors progress and gives valuable advice to encourage good study habits.

myACG parent website and community portal*

ACG's online portal provides a wide range of information to help parents keep in touch with student learning and with the wider ACG school community.

Parents are given a unique login and password which allows them constant access to specific information that relates to their child/ren, through a secure database.

This includes:

- Accommodation details
- Course details and daily timetable
- Attendance records for each lesson
- Assessment marks
- Student academic reports

**Except ACG tertiary and careers programmes.*

- Medical and travel insurance policy and expiry date
- Student visa permit number and expiry date

Orientation

A thorough orientation programme helps students to settle into study life and their new environment.

Students receive a handbook that includes homestay and accommodation guidelines.

Free iPads

All students enrolled in ACG English School and university foundation studies programmes at ACG receive an iPad free of charge for the duration of their course.

Students have access to a complete set of course materials via the iPad.

Student Care Plus / Guardianship Service

An optional support and supervision service for young students is available. The service has been developed in consultation with parents who want their children to be closely supervised and supported by a professional adult caregiver.

The service is recommended for students under 15 years of age.



Your new home

ACG offers accommodation options to suit students of all ages*

Homestay

To get the most out of experiencing New Zealand life, ACG recommends homestay accommodation. ACG students under the age of 18 are required to live with an ACG homestay family, a parent or a designated caregiver.

Accommodation arrangements for students under 18 years of age must meet ACG's approval.

Each homestay family is visited, interviewed and the home inspected before any student placement is made. Homestays must sign a contract that details specific rules and standards. In addition, ACG homestay providers must undergo a vetting procedure by the New Zealand Police. ACG provides training and on-going support for its approved homestays.

All students under the age of 18 are visited in their accommodation a minimum of three times per year by a friendly ACG assessor.

All payments are made directly to the homestay provider from the ACG Student Trust.

ACG Homestay

Standard homestay includes the student's own room with a bed, desk, adequate heating and internet usage. Meals include breakfast and

dinner, Monday to Friday and breakfast, lunch and dinner on Saturday, Sunday and public/school holidays.

Laundry is also included.

Most students travel to school by bus each day.

2017 ACG Homestay Fee

Students under 18 years of age	\$295 per week
Students 18 years & over	\$280 per week

ACG Homestay Plus

ACG Homestay Plus families accommodate no more than two international students at a time. A bathroom is available for the student to share with one other student.

2017 ACG Homestay Plus Fee

Students under 18 years of age	\$330 per week
Students 18 years & over	\$315 per week

Student apartments

Student apartments are available for students aged 18 years and older who seek independent living with a full range of facilities.

2017 Student Apartment Fees: Single Room

Approx price	\$220 to \$460 per week
--------------	-------------------------

For full details of accommodation fees, please refer to acgedu.com



Empire Apartments, Auckland: empireapartment.co.nz

*ACG or its approved contractors



ACG English School

Study English with ACG and start building your bridge to success

One of New Zealand's leading language schools, ACG English School delivers Intensive English courses designed to meet the needs of our students. We aim to maximise student progress and achievement by equipping students with the English skills that best prepare them for further study.

Central location with excellent facilities

ACG English School is located at 345 Queen Street in central Auckland, near the University of Auckland, AUT University, ACG Senior College, ACG Yoobee School of Design, New Zealand School of Tourism and New Zealand Career College. The central location means easy access to public transport and a number of nearby accommodation options. The campus is fully equipped with modern air-conditioned classrooms, computer rooms, a student common room, a library and a cafeteria.

The ACG Pathways Centre

On campus, friendly and experienced staff are at hand to provide information to our students on further study at ACG or beyond.

Key facts:

- ACG English School runs all year round and offers weekly intakes
- Successful ACG English School students have guaranteed entry to all programmes offered by ACG
- The minimum age is 12
- All ACG English School students receive an iPad free of charge for the duration of their course. Students have access to course materials via the iPad.
- Courses consist of 24 or 30 hours of lessons per week
- The tutor system ensures that each student is given close individual attention
- All teachers are fully qualified and registered with the Education Council of New Zealand, which means they are approved by the Council to teach in New Zealand schools
- Full written reports are issued each 12-week cycle in addition to tutor feedback and progress reporting to students
- A range of optional activities is offered outside of the school day to expand the experiences of ACG English School students in New Zealand.

Intensive English

Two modules are included in the 24-hour per week lesson option: The Core & IELTS Academic English Module and the Project-based English Module.

Three modules are included in the 30-hour per week lesson option: The Core & IELTS Academic English Module, the Project-based English Module and the Elective Module.

2017 ACG English School Tuition Fees (NZ\$)

Intensive English 24 hours/week

Weeks 1 to 30	\$410 per week
---------------	----------------

Bookings of more than 30 weeks: all weeks charged at	\$385 per week
---	----------------

Intensive English 30 hours/week

Weeks 1 to 30	\$475 per week
---------------	----------------

Bookings of more than 30 weeks: all weeks charged at	\$435 per week
---	----------------

Additional Fees (NZ\$)

Resource and course materials	\$145
-------------------------------	-------

Intensive English

Entry dates	Every Monday*, the School operates year round
-------------	---

Course length	1 - 48 weeks
---------------	--------------

Levels	Elementary to Advanced
--------	------------------------

Ages	12 years and over
------	-------------------

* Tuesday when a New Zealand Public Holiday falls on a Monday.

The Core & IELTS Academic English Module

consists of skills development along with a focus on examination skills. The module aims to develop English within a variety of contexts.

The module includes:

- **Receptive Skills:** Listening and Reading
- **Productive Skills:** Writing and Speaking
- **Core Language Skills:** Vocabulary, Grammar and Pronunciation

The Core & IELTS Academic English Module consists of approximately 16 hours per week and is designed to develop English language usage, language structure, vocabulary, reading, listening and writing using a set topic.

The Project-based English Module consists of approximately 8 hours per week and takes the skills learned in the Core & IELTS Academic English Module and translates them into a weekly presentation using a variety of media.

Presentations may include:

- The production of a weekly newspaper
- Student video creations
- Design and Fine Art
- Debating
- Podcast creation
- Public speaking

The Elective Module: 6 hours per week.*

The purpose of the Elective Module is to practise English skills through academic subjects, such as Mathematics, Business and Science as well as through creative storytelling.

The Elective Module is particularly useful to students planning to continue their academic studies after reaching the required English level.

ACG English School levels and IELTS equivalents	
ACG English School's Academic Level	IELTS Equivalent on successful completion
Level 1	IELTS 4.0
Level 2	IELTS 4.5
Level 3	IELTS 5.0
Level 4	IELTS 5.5
Level 5	IELTS 6.0

Pathways to further study

Students who successfully complete the following ACG English School levels and who meet stated academic entry requirements have guaranteed entry into all ACG schools and programmes as follows:

ACG Parnell College, ACG Strathallan, ACG Sunderland and ACG Tauranga

Years 7 to 10	Academic Level 2
Years 11 to 13	Academic Level 3**

ACG Senior College

Years 11 to 13	Academic Level 3
----------------	------------------

The University of Auckland Certificate in Foundation Studies

Fast-track	8/9 months (3 terms)	Academic Level 4
Standard	1 year (4 terms)	Academic Level 3
Extended	18 months (6 terms)	Academic Level 2

AUT University Certificate in Foundation Studies

Fast-track	6 months (2 terms)	Academic Level 5
Standard	8/9 months (3 terms)	Academic Level 4
Standard Plus	1 year (4 terms)	Academic Level 3
Academic English for Foundation		
3 months (1 term)		Academic Level 2

Victoria University of Wellington Foundation Studies Programme

Fast-track	6 months (2 terms)	Academic Level 5
Standard	8/9 months (3 terms)	Academic Level 4
Standard Plus	1 year (4 terms)	Academic Level 3

ACG Yoobee School of Design, New Zealand School of Tourism, NZMA and New Zealand Career College***

Level 3 and 4 Certificates	Academic Level 3
Level 5 Diplomas	Academic Level 4
Level 6 and 7 Diplomas	Academic Level 5

*Only available when students are in Academic Level 2 or above.

**ACG Parnell College Academic Level 4.

***Some diploma programmes have different IELTS requirements.

The University of Auckland

Certificate in Foundation Studies

The University of Auckland

international.auckland.ac.nz

The University of Auckland is New Zealand's leading university and is situated in the heart of Auckland.

The University of Auckland is ranked 82nd among the world's top universities,* offering the opportunity to gain an internationally-recognised qualification through a leading research-led university. It is a QS Five Stars Plus institution, having achieved five stars in eight categories including Research, Employability, Teaching, Facilities, Internationalisation and Innovation.**

The University of Auckland teaches more than 30 undergraduate programmes across 125 different

subjects. At postgraduate level, there are over 130 programmes and more than 170 subjects.



Faculties

- **Arts** (including Humanities, Social Sciences, Cultures, Languages and Linguistics)
- **Business School** (including Accounting, Management, Marketing, Information Systems and International Business)
- **Creative Arts & Industries** (including Architecture, Dance, Fine Arts, Music and Urban Planning)
- **Education** (including Early Childhood, Primary and Secondary Teaching, Social Work and Human Services)
- **Engineering** (including Biomedical, Civil and Environmental, Computer Systems, Electrical and Electronic, and Mechatronics)
- **Law** (including Commercial, Environmental, International and Public)
- **Medical & Health Sciences** (including Nursing, Medicine, Pharmacy and Optometry)
- **Science** (including Biological, Chemical, Computer, Earth, Environmental, Food, Marine, Sport and Exercise, and Psychology).



* QS World University Rankings 2015/2016. ** QS Stars rating 2016.



The University of Auckland Certificate in Foundation Studies

The University of Auckland Certificate in Foundation Studies prepares international students for entry into the University's degree programmes.

Key facts

- The University of Auckland Certificate in Foundation Studies offers guaranteed pathways to the University of Auckland
- The Foundation Certificate is recognised by all New Zealand universities
- The University of Auckland Certificate in Foundation Studies takes 8 to 18 months (three to six terms) to complete, depending on the student's academic background and level of English
- The curriculum includes core training in English and independent learning skills
- Students select four or five subjects plus English for Academic Purposes (EAP)
- Subjects available include:

Accounting	Art History*	Economics
Calculus	Statistics	Chemistry
Physics	Biology	Design
Geography*	Photography*	Painting*
Music*		
- A special course in Study and Information Skills prepares students for study at university level.

The University of Auckland Certificate in Foundation Studies is taught by ACG New Zealand International College.

**The above subjects are subject to sufficient enrolments.*

University pathways

Successful completion of the University of Auckland Certificate in Foundation Studies to prescribed standards guarantees entry to an appropriate University of Auckland undergraduate degree.

The Certificate has also been approved for entry to a range of Australian universities, including the Australian National University (ANU), the University of Adelaide, La Trobe University and Monash University.

Academic Entry Requirements

Successful academic experience and qualifications at Year 12 (NZ) or Grade 12/11 (Asia), Senior High School 3rd/2nd year, or equivalent plus English proficiency as listed below.

2017 Tuition Fees (NZ\$)

Fast-track: 8/9 months (3 terms) - IELTS 5.5	\$24,720
Standard: 1 year (4 terms) - IELTS 5.0	\$24,720
Extended: 18 months (6 terms) - IELTS 4.5	\$37,080

2017 Starting Dates

Thursday 26 January (Standard & Extended)

Monday 1 May (Fast-track)

Monday 24 July (Standard & Extended)

Monday 9 October (Fast-track)

2018 Starting Dates

Thursday 25 January (Standard & Extended)

Monday 30 April (Fast-track)

Thursday 19 July (Standard & Extended)

Monday 8 October (Fast-track)

The starting dates above are inclusive of orientation. Attendance at orientation is required.

“

Tam from Vietnam

I really enjoy living and studying in New Zealand. ACG Pathways Campus has such a good study environment. I like the teaching methods here which are varied and flexible.

Krystal (Tam's twin sister)

I love it here at ACG. I feel warmly welcomed, I am encouraged to keep moving forward and I feel safe and accepted here. We learn in new ways, new methods. New Zealand is such a great choice.

”



AUT University

Certificate in Foundation Studies

AUT University aut.ac.nz

AUT University is a contemporary New Zealand university focused on providing exceptional student opportunities, learning experiences and graduate success.

AUT is:

- The 12th most international University in the world and New Zealand's number one international University*
- The second-largest university in New Zealand
- Ranked in the top 3% of the world's universities**
- Proud of its five star rating from QS*** for Internationalisation, Teaching, Graduate Employability, Facilities and Inclusiveness
- Offering several subjects that are ranked among the world's best, including Art and Design - top 50, Accounting and Finance - top 150, and Business and Management - top 200 in the world**
- AACSB accredited - AUT Business School is accredited by AACSB (The Association to Advance Collegiate Schools of Business), which ranks it in the top 5% worldwide.

AUT has:

- A high graduate employment rate because of its career-focused programmes

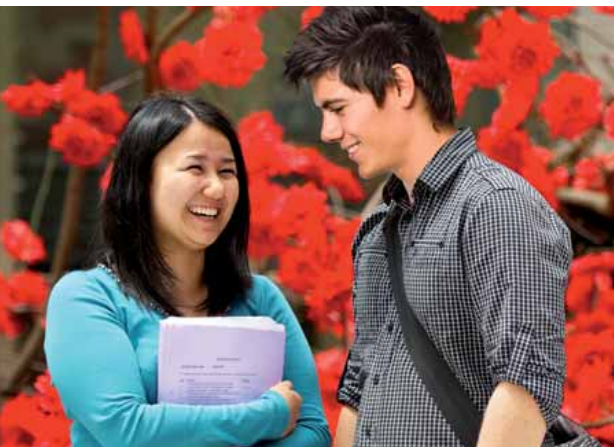
- High-quality teaching staff with typically smaller interactive classes
- Programmes developed in conjunction with industry to ensure they reflect current and future workforce needs
- World-class innovative facilities
- Three vibrant and well-positioned campuses - in Auckland (City), Manukau (South Auckland) and the North Shore (across the Auckland Harbour Bridge)
- Almost 4,000 international students from more than 95 countries.

Programmes of study

- Art and Design
- Business
- Communications
- Computer and Mathematical Sciences
- Creative Technologies
- Education
- Engineering
- Health Sciences
- Hospitality and Tourism
- Languages and Social Sciences
- Law
- Sciences
- Sport and Recreation
- Te Ara Poutama - Maori Development



*2016 Times Higher Education. **QS World University Rankings 2015/16. ***QS Stars rating 2016.



AUT University Certificate in Foundation Studies

The AUT University Certificate in Foundation Studies offers a wide range of subjects, including:

- English
 - Economics
 - Drawing
 - Algebra
 - Statistics
 - Biology
 - New Zealand Culture and Society
 - Tertiary Study Skills
- Accounting
 - Design
 - History
 - Calculus
 - Chemistry
 - Physics

The Certificate in Foundation Studies guarantees entry into AUT University and is accepted by all New Zealand universities and Australian technology universities.

Since 2003, 95% of students who completed the Certificate have received confirmed offers of place at AUT University.

There are four study options, ranging from 6 to 15 months in length, designed to meet the needs of each student.

The AUT University Certificate in Foundation Studies is taught by ACG Norton College.

** IELTS 5.5 (with a minimum of two bands of 6.0, with at least one being in Reading or Writing, and no band less than 5.0), or IELTS 6.0 (with no band less than 5.5) or equivalent.*

“

Rachel from Korea

I’m doing a Bachelor of Arts in International Studies and Chinese at AUT University.

I decided to come to New Zealand because learning in an English-speaking environment provides access to more career opportunities in the future.

I chose ACG because it is well known for being a great university pathway for international students. The staff and students here are very friendly and I

Academic Entry Requirements

Successful academic experience and qualifications at Year 12 (NZ) or Grade 12/11 (Asia), Senior High School 3rd/2nd year, or equivalent plus English proficiency as listed below.

2017 Tuition Fees	(NZ\$)
Fast-track: 6 months (2 terms) - IELTS 5.5 *	\$17,200
Standard: 8/9 months (3 terms) - IELTS 5.5	\$19,620
Standard Plus: 1 year (4 terms) - IELTS 5.0	\$26,160
Academic English for Foundation: 3 months (1 term) - IELTS 4.5	\$6,800

2017 Starting Dates

Thursday 26 January (Fast-track, Standard, Standard Plus & Academic English)

Monday 1 May (Standard, Standard Plus & Academic English)

Monday 24 July (Fast-track, Standard, Standard Plus & Academic English)

Monday 9 October (Standard, Standard Plus & Academic English)

2018 Starting Dates

Thursday 25 January (Fast-track, Standard, Standard Plus & Academic English)

Monday 30 April (Standard, Standard Plus & Academic English)

Thursday 19 July (Fast-track, Standard, Standard Plus & Academic English)

Monday 8 October (Standard, Standard Plus & Academic English)

The starting dates above are inclusive of orientation. Attendance at orientation is required.

felt really comfortable and happy studying here.

The AUT University Foundation programme helps you to prepare for university. One of the subjects I took was Tertiary Study Skills and it was all about learning how to write academic essays.

I really like the lively atmosphere in New Zealand. I have met people from all over the world and Auckland has many international festivals that give you exposure to other cultures.

After completing the bachelor degree I’m planning to do a graduate diploma in early childhood education.



”

Victoria University of Wellington

Foundation Studies Programme

Victoria University of Wellington

victoria.ac.nz

Get your world-class education as an international student at Victoria - New Zealand's globally-ranked capital city university.

Studying at Victoria is a great way to build a strong foundation for success, or take your career to the next level. You will learn from Victoria's world-class teachers and researchers and benefit from our close connections with Wellington's business, government and scientific research communities.

Victoria University...

- Is number one in New Zealand for research quality*
- Has internationally recognised courses and degrees, ranked in the world's top 150 universities in 15 subjects**
- Offers a quality education modelled on the highly successful British framework – one that emphasises creative thought and heightened world knowledge
- Teaches skills for getting ahead – leadership, communication, creative and critical thinking
- Has over 21,000 students including 2,800 international students
- Is a leading international research centre – this research is integrated into our teaching programmes.

Global Rankings

Victoria consistently ranks among the world's best universities. In 2015/2016, Victoria ranked 229 equal in the QS World University Rankings.

**2013 Performance-Based Research Fund. **QS World Rankings by Subject, 2016.*



At the top

Overall, Victoria is in the top 2.5 percent of the world's universities.

In 15 subject areas, we are among the top 1 percent of the world's universities (2016 QS World University Rankings by Subject).

Victoria is ranked 50th in the world in Social Policy and Administration and in the top 100 universities in the world in nine other subjects:

- Accounting and Finance
- Development Studies
- Education
- English Language and Literature
- Geography
- History
- Law
- Linguistics
- Psychology

QS Stars

In 2016, Victoria joined an elite group of universities from 35 countries that have achieved an amazing result of 5 stars overall and not only that, Victoria also received 5 stars for each category.



Victoria University's eight faculties of study include:

- Architecture and Design
- Business
- Education
- Engineering
- Graduate Research
- Humanities and Social Sciences
- Law
- Science



Victoria University of Wellington Foundation Studies Programme

The Victoria Foundation Studies Programme prepares you for entry into the University's undergraduate programmes.

Key facts

- The Victoria Foundation Studies Programme offers guaranteed pathways to Victoria University of Wellington upon successful graduation
- The Victoria Foundation Studies Programme is recognised by all New Zealand universities
- The curriculum develops subject knowledge and skills as well as entrepreneurial enterprise, leadership and team skills to equip you for university
- The academic year is divided into four terms and there are four starting dates each year and six, eight and twelve-month course options (two, three or four terms), depending on your academic background and level of English
- Subject choices include: * Accounting, Economics, Marketing, Tourism, Communication, Culture, Statistics, Calculus, Biology, Chemistry and Physics
- Special courses in English for Tertiary Study and New Zealand Culture and Society prepares you for study at university level

The Victoria University of Wellington Foundation Studies programme is registered as the ACG Foundation Studies Programme and taught by ACG New Zealand International College.

University Pathways

Successful completion of the Victoria Foundation Studies Programme guarantees you entry to an appropriate Victoria University of Wellington undergraduate degree.

Scholarships

The top student completing the Victoria Foundation Studies Programme each term receives a NZ\$5,000 scholarship towards the tuition fees in the first year of their undergraduate degree at Victoria University.

Academic Entry Requirements

Successful academic experience and qualifications at Year 12 (NZ) or Grade 12/11 (Asia), Senior High School 3rd/2nd year, or equivalent plus English proficiency as listed below.

2017 Tuition Fees		(NZ\$)
Fast-track: 6 months (2 terms) - IELTS 6.0		\$16,700
Standard: 8/9 months (3 terms) - IELTS 5.5		\$19,050
Standard Plus: 1 year (4 terms) - IELTS 5.0		\$25,400

2017 Starting Dates	2018 Starting Dates
For Fast-track, Standard, & Standard Plus	
Tuesday 24 January	Tuesday 23 January
Thursday 20 April	Wednesday 18 April
Monday 17 July	Monday 16 July
Monday 9 October	Monday 8 October

The starting dates above are inclusive of orientation.
Attendance at orientation is required.

**Some subjects may only be available if there are sufficient students or may only be available in alternate terms.*



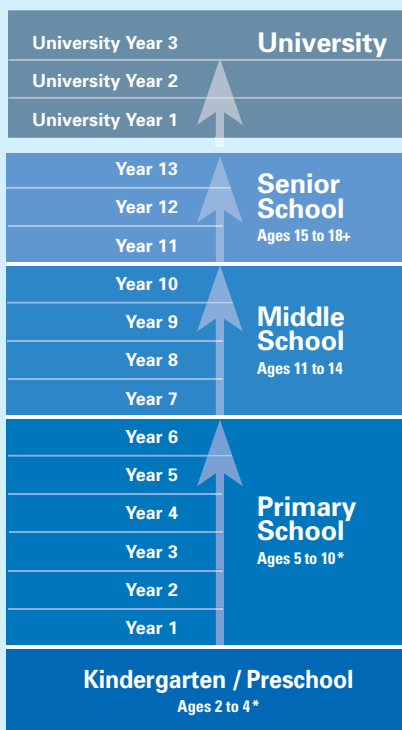
ACG Primary, Middle and Senior School Programmes

Personal Achievement, Examination Success, Proven Quality

ACG is New Zealand's largest provider of quality private school education, with five co-educational day schools in Auckland and Tauranga.

All ACG Schools offer the University of Cambridge International Examinations: IGCSE, AS and A Levels. ACG Senior College also offers the International Baccalaureate (IB) Diploma. These qualifications are internationally recognised, highly respected and accepted by top universities worldwide.

New Zealand Education System



* International Preschool and Primary students under the age of 12 must be accompanied and live with parent/s.

A clear focus on academic outcomes has enabled ACG students to achieve over 300 Top in the World and Top in New Zealand Cambridge International Examination awards.

English language support is available at all ACG Schools.

ACG owns and operates international schools in Indonesia and Vietnam.

ACG Schools offer a number of benefits to students:

Internationally recognised qualifications

Accepted, respected and understood by schools and universities worldwide.

A clear focus on academic achievement

In a learning environment where each student is nurtured and challenged by ACG's experienced and committed staff.

A personalised learning experience

Where each student is valued and each student's accomplishments are recognised.

A personal tutor system

Where each student receives assistance and encouragement to set goals and evaluate achievements.

More teaching time

ACG Schools have longer lessons (70 to 85 minutes), to ensure individual attention and a variety of learning experiences.

An online learning system

ACG Schools use Blackboard online learning, through which unique and specific course and subject resources support the development of each student while allowing for parent access and oversight.

Convenient locations in Auckland and Tauranga

With four ACG Schools strategically located around Auckland and one in Tauranga, there is a school within convenient reach for students.

Where public transport services are limited, ACG Schools offer dedicated bus services to make access safe and convenient.

Term dates for ACG Schools

Students are welcome to apply for entry into ACG school programmes throughout the year.

2017 (includes orientation)

Term 1	Monday 23 January - Thursday 13 April
Term 2	Monday 1 May - Friday 30 June
Term 3	Monday 24 July - Friday 29 September
Term 4	Monday 16 October - Tuesday 5 December

2018 (includes orientation)

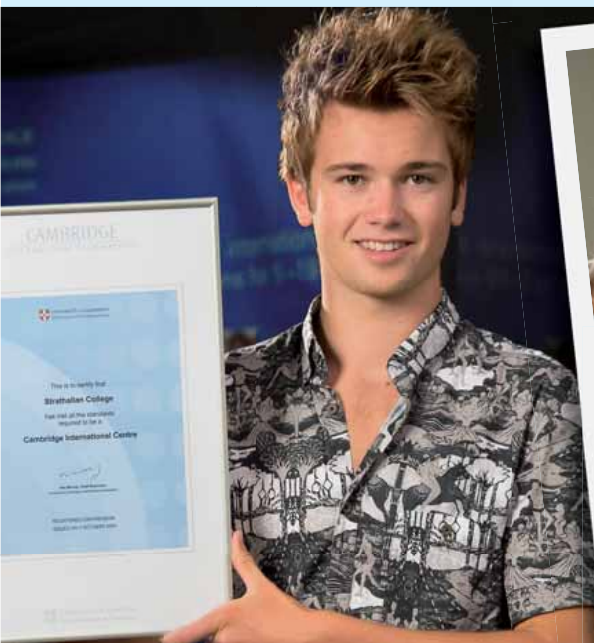
Term 1	Monday 22 January - Friday 13 April
Term 2	Monday 30 April - Friday 29 June
Term 3	Monday 23 July - Friday 28 September
Term 4	Monday 15 October - Thursday 6 December

Cambridge International Examinations A Level Pass Rates November 2015:

School	% Pass
ACG Parnell College	100
ACG Senior College	100
ACG Strathallan	100
ACG Sunderland	100

ACG Schools' key facts:

- All ACG Schools are co-educational and offer English language support
- ACG caters for all ages, from Kindergarten to Year 13
- A strong focus on academic achievement in each school
- Participation in extra-curricular activities is encouraged and sporting success celebrated
- The school year runs from late January to early December and is divided into four terms with 2 to 3-week holidays between each and a longer break of 8 weeks over the New Zealand summer
- ACG Senior College offers the IB Diploma Programme in addition to Cambridge International Examinations
- Uniforms are worn by all ACG students except those enrolled at ACG Senior College.



ACG Parnell College

Primary to Senior School

ACG Parnell College is located in Parnell, an inner-city area of Auckland. The stunning purpose-built campus lies next to the Domain, Auckland's largest park.

The premises include a wide range of specialist facilities, including a gymnasium, a large library and cafeteria, sophisticated art, technology and computer rooms, drama and music rooms and laboratories.

The School makes full use of its excellent location with nearby facilities, such as the Parnell Tennis Club and Newmarket Olympic Swimming Pools. A wide range of team sports are offered, including basketball, cricket, waterpolo, soccer, netball and tennis.

ACG Parnell College students have enjoyed exceptional academic success. In the most recent examinations, the university entrance pass rate was 99%.

2017 Tuition Fees	(NZ\$)
Years 1 to 6 (students aged 5 to 10)	\$19,280
Years 7 to 10 (students aged 11 to 15)*	\$24,560
Years 11 to 13 (students aged 15 and over)*	\$27,800

**Students in Year 9 to Year 13 will be offered places at ACG New Zealand International College, delivered by ACG Parnell College.*

Key facts:

- Continuous educational path from Year 1 to Year 13
- An outstanding purpose-built school with a wide range of specialist facilities
- An emphasis on promoting individual student achievement with outstanding results
- Easy access to Auckland's bus and train services
- The School develops leadership skills through offering students outdoor education programmes, a student council and, in the senior school, a prefect system
- Close to excellent sporting and cultural amenities
- Students wear a casual uniform from Year 1 to Year 12
- ACG's English for Speakers of Other Languages (ESOL) Programme, combines English language and one or more academic subjects. It aims to provide international students from Years 7 to 13 with the English language skills required to achieve success in a full school programme. The programme allows for gradual integration into the mainstream classes as students develop their English language skills.



ACG Senior College

Senior School: Years 11 to 13

ACG Senior College is among New Zealand's top academic schools. From its beginning in 1995 as New Zealand's only specialist pre-university centre, the School has become a focus for exceptional educational success.

ACG Senior College is located in the heart of Auckland City, where our students enjoy the vibrancy and energy of city life. The College is located in a historic building adjacent to AUT University and within a short walk to the University of Auckland.

The IB Diploma at ACG Senior College

In addition to the Cambridge International curriculum, ACG Senior College offers the International Baccalaureate Diploma Programme (IBDP).

The IBDP is an academically challenging and balanced programme widely recognised and respected by the world's leading universities.



Key facts:

- A senior school with outstanding academic student achievement
- Smaller classes, a longer day and longer lessons contribute to effective student learning
- A wide range of extra-curricular and leadership opportunities are available
- Conveniently situated in the heart of Auckland City
- A wide range of subjects is offered to help prepare for university, including preparation for Global Perspectives and Thinking Skills
- Students wear tidy casual clothing befitting our pre-university status - no uniform
- ACG's English for Speakers of other languages (ESOL) Programme is available to international students who require additional English support.

2017 Tuition Fee

(NZ\$)

A choice of:
Cambridge International
IGCSE and A Levels *or*
International Baccalaureate (IB)
IB Diploma Programme

\$24,800

Partial tuition scholarships are available, please contact ACG for information on how to apply.



ACG Strathallan

Kindergarten to Senior School

One of the largest independent school complexes in New Zealand, ACG Strathallan consists of an Infant Centre and Kindergarten (ages 3 months to 5 years), Primary School (Years 1 to 6; ages 5 to 10) and College (Years 7 to 13; ages 11 and over).

ACG Strathallan is a top quality educational facility, located on the beautiful Hingaia Peninsula, in a scenic suburb of Auckland. The spacious campus area provides a green and healthy environment with excellent premises, sports facilities and playing fields.

The blend of modern, high-tech learning centres and beautiful coastal countryside creates the perfect environment for young people to develop to their full potential.

Since its opening in 2001, ACG Strathallan has built an impressive record of educational success, with students achieving outstanding results - academically, in the arts and in a number of sporting fields.

2017 Tuition Fees	(NZ\$)
Years 1 to 6 (students aged 5 to 10)	\$18,900
Years 7 to 13 (students aged 11 and over)	\$22,880

Partial tuition scholarships are available, please contact ACG for information on how to apply.

Key facts:

- Continuous educational path from Kindergarten to Year 13
- Spacious campus set in park-like grounds on the beautiful Hingaia Peninsula
- Proven academic and sports successes on an international level
- A wide variety of sporting and extra-curricular activities, including an international hockey turf, an equestrian academy and active soccer teams
- Dedicated school bus transport service
- Students wear a traditional uniform from Kindergarten to Year 12
- ACG's English for Speakers of other languages (ESOL) Programme is available to international students who require additional English support.



ACG Sunderland

Kindergarten to Senior School

ACG Sunderland is West Auckland's leading private co-educational school, conveniently located five minutes from the North-Western motorway. Students are able to use ACG Sunderland's own school bus service or take advantage of Auckland extensive transport system.

The campus comprises architecturally designed premises and nine acres of landscaped grounds.

ACG Sunderland is a boutique school which offers close individual attention to each student. Class sizes are small and students are well-supported by excellent pastoral care and values programmes.

ACG Sunderland staff provide high levels of support, creating a unique experience for international students. A comprehensive range of subjects is on offer while extra-curricular activities from Music to Sport are available as well as a strong student leadership programme.



Key facts:

- Continuous educational path from Kindergarten to Year 13
- Attractive modern campus on landscaped grounds
- Dedicated school bus transport service
- Close to excellent sporting and cultural facilities
- All students wear a traditional uniform
- Tutorials are offered before and after school as well as in the second and third holiday break for the senior students to maximise their potential for the end-of-year Cambridge International Examinations
- A 100% Cambridge A2 pass rate and one of the highest University Entrance rates in New Zealand makes ACG Sunderland an excellent choice for academic success
- ACG's English for Speakers of other languages (ESOL) Programme is available to international students who require additional English support.

2017 Tuition Fees

(NZ\$)

Years 1 to 6 (students aged 5 to 10)

\$18,900

Years 7 to 13 (students aged 11 and over)

\$22,000

Partial tuition scholarships are available, please contact ACG for information on how to apply.



ACG Tauranga

Primary to Senior School

ACG Tauranga is a new school committed to providing high quality education in the Bay of Plenty region. ACG Tauranga opened in February 2015 and is a secular, uniformed, co-educational day school that welcomes students to Years 1 to 11, while introducing further secondary levels gradually from 2018.

When the campus is fully developed it will provide a continuous educational path from Kindergarten to Year 13.

The spacious 14.8 hectare greenfields campus is located on a superb site in Pyes Pa, Tauranga.

ACG Tauranga offers a learning environment where each student will be nurtured and challenged by our experienced and committed team of staff.

2017 Tuition Fees	(NZ\$)
Years 1 to 6 (students aged 5 to 10)	\$18,900
Years 7 to 11 (students aged 11 to 15)	\$23,000

Key facts:

- An international curriculum and a positive learning environment where the individual is valued and each student's accomplishments are recognised and celebrated
- Innovative and engaging programmes designed to encourage students to think both creatively and critically
- Extension activities to challenge able students
- Thinking Skills as part of the curriculum to create ordered minds and deeper understanding
- Acknowledgement and nurturing of artistic and musical talents. Special interest groups include art workshops, dance, drama, bands and an annual musical production.
- Dynamic sports and health programmes to broaden students' experiences and enable lifelong participation in a variety of activities.



Tertiary and Careers Programmes

ACG offers a wide range of programmes for a skills-focused career or further study

ACG owns and operates four quality tertiary colleges:

- ACG Yoobee School of Design
- New Zealand School of Tourism
- New Zealand Career College (NZCC)
- NZMA (New Zealand Management Academies)

All are Category 1 providers - the highest possible ranking from NZQA (New Zealand Qualifications Authority) - and together they train over 6,000 students per year, delivering real skills for today's professions.

A wide range of certificate and diploma programmes are on offer, in the exciting fields of:

- Design and Multimedia
- Management
- Hospitality and Cookery
- Tourism and Travel
- Early Childhood Education

Programmes are industry-relevant, practical and flexible, ranging from two days to two years in duration.

With ACG, you gain valuable practical skills and highly respected qualifications. A dedicated careers team is on hand to help graduates launch their careers in New Zealand, ensuring their journey at ACG is not only a pathway to further education, but also a pathway to a rewarding career.



Design and Multimedia

ACG Yoobee School of Design Tertiary education - Category 1

The largest specialised design and multimedia school in the country, ACG Yoobee School of Design has been training students for the creative industries since 1997. Offering practical training in Digital Design, Web Design and Production, Animation, Film and 3D Production and Game Art and Development. ACG Yoobee produces work-ready, technically skilled graduates for the creative industries.

We have the highest possible ranking from NZQA - Category 1 - and offer flexible study options ranging from short courses and online learning right through to two-year diplomas and degree pathways. Our students gain hands-on experience with industry standard software and have opportunities to work for real clients on real projects.

ACG Yoobee School of Design campus locations: ■ Auckland ■ Wellington ■ Christchurch

2017 Programme Information	Length Weeks	NZQA Level	Min IELTS	Tuition Fees NZ\$	Campus
Certificate in Digital Media (iCreate)	15	3	5.5	\$6,750	■ ■ ■
Diploma in Digital Design - Web and Graphic	40	5	5.5	\$18,950	■ ■ ■
Diploma in Digital Design - Animation and Film Production	40	5	5.5	\$18,950	■ ■ ■
Diploma in Digital Design*	40	6	6.0	\$18,950	■ ■ ■
Diploma in Web Design and Production*	40	6	6.0	\$18,950	■ ■ ■
Diploma in 3D Production*	40	6	6.0	\$18,950	■ ■ ■
Diploma in Screen Production*	40	6	6.0	\$18,950	■ ■ ■
Diploma in Game Art and Development (Year one)	37	7	6.0	\$18,950	■ ■ -
Diploma in Game Art and Development (Year two)	37	7	6.0	\$18,950	- ■ -
Diploma in Advanced 3D Graphics	35	7	6.0	\$18,950	■ ■ -
Diploma in Digital Media (Advanced)	35	7	6.0	\$18,950	■ ■ -

For 2017 programme dates, please see page 40.

**Please note that the structures of the above programmes are currently under review to introduce recent innovation in the industry. For the most up-to-date information please refer to yoobee.ac.nz*



Classes are small, fun and inspiring, and our friendly, accessible tutors come direct from industry.

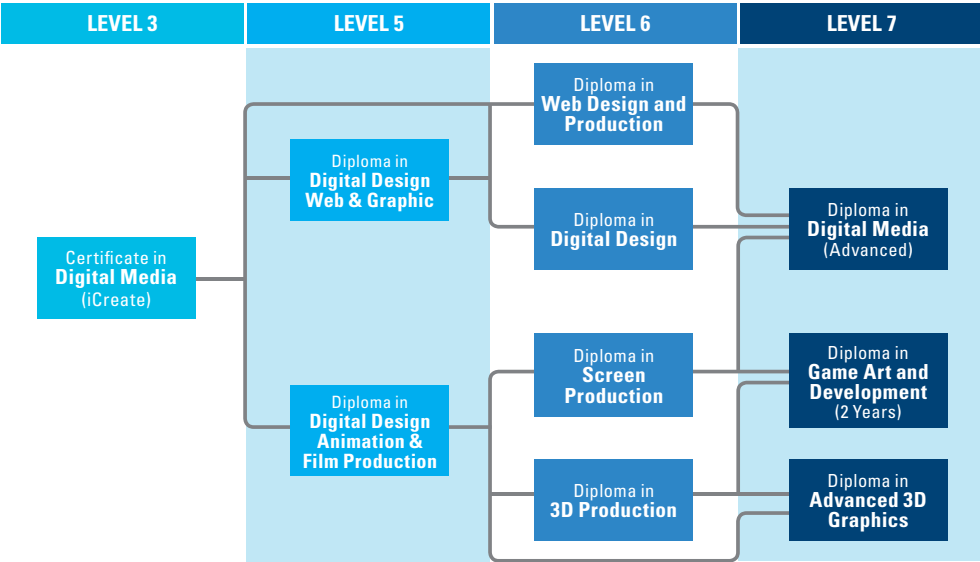
They are animators, directors, graphic designers and special-effects artists - and they know exactly what today's employers are looking for. This keeps ACG Yoobee programmes fresh and industry relevant, and ensures ACG Yoobee graduates are in hot demand.

With vibrant campuses in Auckland, Wellington

and Christchurch, ACG Yoobee is the perfect place to carve out a creative future.

Dedicated student employment coordinators are based at each campus, and work closely with students to develop short-term placements, internships and full-time roles in the design and multimedia sectors. With industry links to many of the country's top design studios and agencies, ACG Yoobee students graduate work ready and well placed to forge extraordinary creative careers.

Study Pathways



Other pathway options are possible, subject to appropriate experience or qualifications being achieved.

Japanese student wins ACG Yoobee School of Design top awards

Japanese student Yoshinori Ban has had a memorable year at ACG Yoobee School of Design. In addition to completing his Diploma of Computer Graphic Design, he has also won two of the top prizes in Yoobee's Excellence Awards.

Now that Yoshinori has a New Zealand design qualification under his belt - and a couple of amazing awards - the design world is his oyster. He has already landed a job in New Zealand as a graphic designer for Kiwise Digital Marketing Agency and there are undoubtedly more great things to come.



Tourism and Travel

New Zealand School of Tourism Tertiary education - Category 1

The largest specialised tourism and travel school in the country, New Zealand School of Tourism has been training students for the airline, travel and tourism industry since 1985. The school has eight campuses throughout New Zealand including a campus at Auckland Airport.

The tourism and travel courses prepare students for a range of careers in the industry, from hotels to tourist information offices, travel agencies, airlines, duty free, rental cars and lots of other tourism companies. The international flight attendant course can be completed on its own or as part of a two-year management

programme and graduates have been employed with airlines all around the world from Air New Zealand to Emirates, Qatar, ANA, Garuda Indonesia and many more.

Our classes are small with a maximum of 22 students which ensures that each student gets individual help when they need it. The course tutor will also be a mentor, meeting with students regularly, providing feedback and advice on their progress as well as goal setting, assisting with compiling a CV and gaining employment.

Our Auckland Airport campus has a 747 service trainer with two galleys, a full length 737 cabin

NZST campus locations: ■ Auckland ■ Hamilton ■ Rotorua ■ Wellington ■ Christchurch ■ Dunedin

2017 Programme Information	Length Weeks	NZQA Level	Min IELTS	Tuition Fees NZ\$	Campus
The Tourism, Travel & Airline Industry	22	3	5.5	\$12,200	■ ■ ■ ■ ■ ■
Tourism, Hotel & Airline Operations	16	4	5.5	\$8,190	■ ■ ■ ■ ■ ■
Certificate in International Flight Attending	14	4	5.5	\$7,890	■ ■ ■ ■ ■ ■
Diploma in Tourism & Travel	32 (1 yr)	5	5.5	\$18,650	■ ■ ■ ■ ■ ■
Travel & Tourism Management Diploma	70 (2 Yrs)	5	5.5	\$29,900	■ ■ ■ ■ ■ ■

For 2017 programme dates, please see page 41.



trainer with fully operational doors, overwing exits and evacuation slide, a 40-man life raft and emergency equipment.

All students experience hands-on learning with industry visits, speakers, field trips and study tours. The diploma study tours are to Hobbiton, Waitomo Adventures in the North Island, and Skyline Skyrides, Real Journeys and AJ Hackett Bungy in the South Island.

Students experience tourism businesses first hand and hear from the management team about the operations of these successful tourism companies.

The optional international study tour will be to a Pacific Island to visit international resorts and tour operators.

Industry partnerships enable students to be presented with numerous opportunities throughout their studies, from work experience at the Koru Lounge and major sporting events through to our exclusive job fairs held in Auckland, Rotorua, Wellington, Christchurch and Queenstown.

Paid internships in the tourism industry are offered to all students enrolled in the diploma programme.

Kana Mori, Flight Attendant, Emirates

Kana from Japan successfully completed a Certificate in Airline Travel & Tourism Level 3, a Certificate in Tourism Airline & Hotel Operations Level 4 plus a Certificate in International Flight Attending. Whilst studying full-time she was also proactive in gaining employment and she secured part-time work in a food & beverage role at the 5-star Stamford Plaza Hotel in Auckland City.

We wish Kana all the best for her new and exciting career as a Flight Attendant and very much looking forward to seeing her in her uniform!



Hospitality, Cookery and Business

NZMA Tertiary education - Category 1

NZMA has been teaching skills for today's workplace for over 30 years, producing some of the best hospitality, cookery and business professionals in the country. Our programmes are highly respected by employers, and also by NZQA, who have given us their ultimate seal of approval by granting us a Category 1 ranking.

With two campuses in Auckland and one in Hamilton, we place more than 2,000 students into meaningful employment, every year.

NZMA Sylvia Park - home of our popular cookery and hospitality school - welcomes around 1,000 students each year, from over 30 different countries, including New Zealand. Students here study NZQA-accredited Hospitality, Cookery and Business programmes, and can also complete a 600-hour paid internship as part of their Hospitality and Cookery Diploma training.

The purpose-built campus features commercial kitchens, barista stations, a student-run café, a spacious restaurant, bar training areas, a large cyber suite and modern computer classrooms. Tutors come directly from industry, and teach the hands-on, practical skills that students need to start their careers in these exciting sectors.

Students gain relevant industry experience in our authentic training environments and we have a dedicated employment team, NZMA Careers, to support them into employment. This team makes sure our students graduate work ready, and helps them find part-time work, internships and full-time employment.

NZMA Careers has strong relationships with many of New Zealand's biggest employers - for many organisations looking for skilled staff, NZMA is their first port of call.

NZMA campus locations: ■ Auckland ■ Hamilton

2017 Programme Information	Length Weeks	NZQA Level	Min IELTS	Tuition Fees NZ\$	Campus
Certificate in Hospitality	20	3	5.0	\$8,000	■ ■
Certificate in Hospitality (Restaurant Service)	20	4	5.5	\$8,000	■ ■
New Zealand Diploma in Hospitality Management	40	5	5.5	\$18,500	■ ■
Diploma in Applied Hospitality Management	80 (2 Yrs)*	6	6.0	\$32,960°	■ -
Diploma in Tourism & Hotel Management	40	7	6.0	\$19,000	■ -
Certificate in Cookery (Level 3)	20	3	5.0	\$9,000	■ -
Certificate in Cookery (Level 4)	40	4	5.5	\$19,800	■ -
Diploma Programme in Professional Cookery	80 (2 Yrs)**	5	5.5	\$32,960°	■ -
Diploma in Business (Advanced)	80 (2 Yrs)	6	6.0	\$22,660°	■ -

For 2017 programme dates, please see page 41.

° For annual tuition fees please refer to acedu.com

*An 18-month Level 6 fast-track option is available. Students who select this option and who successfully complete all requirements for the diploma will be awarded the Diploma in Applied Hospitality Management Level 6.

**An 18-month Level 5 fast-track option is available. Students who select this option and who successfully complete all requirements for the diploma will be awarded the Diploma in Professional Cookery Level 5.

The 18-month options require students to complete their internship concurrently with their campus-based studies.



NZMA Programmes*

*For Hospitality Levels 3 and 4, please refer to nzma.ac.nz

New Zealand Diploma in Hospitality Management (Level 5) - One year in total.

An internationally-recognised vocational qualification to enter employment within the hospitality sector, or related areas, such as

business management or leisure and tourism management.

Diploma in Applied Hospitality Management (Level 6) - Two years in total. * (including the Level 5 diploma)

An internationally-recognised vocationally specific qualification to enter employment in hospitality or progress to higher education.

Graduates will also have first-hand experience of industry with a relevant organisation with paid internship.

Diploma in Tourism & Hotel Management (Level 7) - One year in total.

An internationally-recognised vocationally management qualification to enter employment in the tourism and hotel industry. In addition to the Level 7 Diploma, graduates

will also be awarded a Bachelor of Arts in Events and Hotel Management from the Hotel and Tourism Management Institute (HTMi) in Switzerland.

Certificate in Cookery (Level 3) - 20 weeks in total.

Ideal for students new to the commercial cookery environment. Students graduate knowledgeable about food safety and how to

prepare basic dishes at an operational level. Provides the basic skills commercial chefs are looking for in their kitchen staff.

Certificate in Cookery (Level 4) - One year in total. (including the Level 3 certificate)

Gain the skills needed to work in a commercial kitchen/restaurant. Course content includes

prepping and cooking dishes, food safety and service sector cookery.

Diploma Programme in Professional Cookery (Level 5) - Two years in total. ** (including the Level 3 & 4 certificates)

Gain the expertise required as a chef in the hospitality industry. Become proficient in

advanced cookery skills as well as allied administrative and kitchen management skills.

Diploma in Business (Advanced) (Level 6) - Two years in total.

An 80-week qualification that recognises the broad base of skills required for people entering the workforce in business related roles, people aspiring to management, and people wishing

to extend their business skills. Build a broad understanding of business including marketing, economics, finance, management, research, effective decision-making and leadership.

“

The best part about studying at NZMA is the professional cookery knowledge and skills I have gained. The facilities are new and we have a big kitchen to learn in. There are lots of opportunities to gain practical experience. I love cooking and I want to learn more about the art of food. Eventually I plan to open my own restaurant in New Zealand or back home in China.

Yang Ding (Eric) - China

”



Management and Early Childhood

New Zealand Career College (NZCC) Tertiary education - Category 1

NZCC provides quality vocational training in the fields of Management and Early Childhood Education. With a strong emphasis on practical skills, our goal is to help students not only gain qualifications, but also develop fulfilling careers. Currently we train and transition almost 1,000 students each year, from New Zealand and around the world.

Ranked as a Category 1 provider by NZQA, NZCC's certificates and diplomas are all NZQA-accredited and are delivered in a nurturing, inclusive learning environment.

All of our programmes include extensive practical training and work experience, placement or internship opportunities.

All of NZCC's academic staff are well qualified, industry-experienced and highly committed to seeing students reach their full potential. With a strong focus on outcomes, we also have a dedicated careers team who support our graduates into rewarding employment.

Founded in 2004, NZCC's on-going goal is to provide qualifications for which there is a high industry demand, and which result in genuine pathways to further study or employment.

NZCC campus locations: ■ Auckland ■ Wellington

2017 Programme Information	Length Weeks	NZQA Level	Min IELTS	Tuition Fees NZ\$	Campus
Diploma in Applied Management	40	7	6.0	\$17,750	■ -
Diploma in Early Childhood Education	40	5	6.0	\$16,500	- ■

For 2017 programme dates, please see page 40.



NZCC Programmes

Diploma in Applied Management (Level 7)

(Streams in Professional Retailing, Project Management, Health Management and Procurement and Supply Chain Management).

The programmes comprise eight papers taught over one year which are designed to equip students with advanced applied business management and strategy skills. Providing potential pathways into senior Project Management, Retail Management,

Health Management or Procurement and Supply Chain Management roles.

Graduates will be prepared for employment through practical management training, including an internship.

Subjects covered in the four streams:

Professional Retailing:

Retail Research, Professional Retail Selling, Strategic Retail Management, Retail Internship, Financial Management, Management Perspectives, Marketing and Operations Management.

Health Management*:

Public Health Issues, Health Sector Governance and Planning, Healthcare Management Ethics and Communication, Health Internship or Business Project, Financial Management, Management Perspectives, Operations Management and Marketing.

Project Management:

Project Management, Business Law, Internship* or Business Project, Financial Management, Management Perspectives, Marketing, Operations Management and Strategic Management.

Procurement & Supply Chain Management:

Supply Chains and Risk Management, Sourcing, Internship* or Business Project, Project Management, Financial Management, Management Perspectives, Operations Management and Marketing.

Diploma in Early Childhood Education (Level 5)

This will prepare students for a career in the early childhood education sector and is an excellent option for further developing the academic skills necessary to complete

higher level studies, work effectively with young children in an early childhood education centre and gain knowledge of health and safety requirements.

**Subject to NZQA approval.*

“ I came to New Zealand Career College because it's one of the top tertiary colleges in Auckland, with excellent teachers, a supporting and caring environment and professional internships.

You are very lucky if you get the opportunity to come to New Zealand. It's a peaceful environment and the people are friendly and hospitable. New Zealand has changed me a lot. I've learned so much while I've been here like how to manage myself. I've grown. I've learned so many things.

Guurwinder Singh

”



ACG Internships

Real skills for your career

Internships provide real world experience to those looking to explore or gain the relevant knowledge and skills required to enter into a particular career field. The primary focus of an internship is to get valuable on the job training, taking what's learned in the classroom and applying it to the real world.

The following internships are available at ACG:

Tourism & Travel

New Zealand School of Tourism

Travel & Management Tourism Diploma

Internships are available to all students studying a diploma level programme to gain the final 30 credits of their qualification. The internship allows you to apply your past classroom learning, develop work place social and human relations skills, and provides the opportunity to apply communication and problem-solving skills in the real world.

As part of the internship you will complete an assessment at the end of your first month on the induction and initial training process you have experienced. Your performance during the internship is evaluated by the on-site supervisor, and an attestation to you having worked a minimum of 400 hours.

All internships are paid and the range of internships is dependent on the employer requirements. Typical placements are found during one-on-one interviews at our national Job Fairs and placements range throughout the airline, travel and tourism industry.

Hospitality & Cookery

NZMA

Diploma in Applied Hospitality Management Level 6

Step out of the classroom and into the workplace with a 600-hour full-time paid internship. This is your chance to put into practice all you've learnt during your studies. You will enhance your skills, gain vital work experience and complete an in-depth research project. It's a great addition to your CV and may even lead to a permanent role after you graduate.

What will I learn?

During the first 18 months of this two-year programme you will complete your Level 5 and 6 Diplomas in Hospitality Management. In the last 20 weeks you will gain first-hand industry experience, by completing an internship and a relevant research project.

What will I gain from an internship?

- Enhance your practical skills
- Boost your CV with New Zealand references
- Undertake 600 hours of paid internship
- Complete a research project in the industry
- Work with other New Zealanders and get a feel for life in New Zealand
- Extend your work experience and skills in New Zealand by an additional 6 months (Student Visa granted for the duration of this programme).



Diploma Programme in Professional Cookery Level 5

If you want to be a professional chef at the top of your field, look no further.

Our diploma gives you all the skills, knowledge and experience you will need to succeed in today's kitchens. Specialise in either patisserie or gastronomy and gain valuable work experience during your full-time 600-hour paid internship. This will give you the leading edge when it comes to launching your career - as well as great qualifications and skills, you will graduate with significant industry experience. This will look great on your CV!

What will I learn?

- Advanced cookery skills
- Administrative management skills
- Kitchen management skills
- Specialisation in either patisserie or gastronomy
- Planning and implementing a live dinner service (including menu development, application of management skills)
- Research and evaluation of current innovations, and principles and concepts of food production management
- 600-hour paid internship
- Internship-based research project.

Management

New Zealand Career College (NZCC)

Students enrolled in our **Diploma in Applied Management programme** may specialise in one of the four strands: Professional Retailing, Project Management, Health Management or Procurement & Supply Chain Management.

A 9-week internship is a compulsory component of the Professional Retailing strands. In addition to having the opportunity to apply your knowledge in the retail or service sectors, you will be assisted before and throughout the internship with job-seeking skills and career counselling to help you enhance your performance and employability.

There are many exciting career options within the retail industry. Our students have completed work placements in supermarkets, apparel stores, hospitality establishments, bookstores, departmental stores, and lifestyle service providers, to list a few.

For Project Management, Health Management and Procurement & Supply Chain Management streams we provide an optional 9-week Career Management programme aiming to prepare and assist you with your job search. During the 40-week programme, students can spend 9 weeks participating in job seeking workshops, such as CV Writing, Interview techniques, and mocked interviews outside normal class hours. Additionally, students will also be coached and guided individually by our full-time Career Advisor to explore their career options, and network with potential employers.

Design and Multimedia

ACG Yoobee School of Design

Internship opportunities are available where you gain valuable experience from a mentor while the company benefits from getting some help with work. Internships could be one day a week to fit in with your studies or 5 days a week following graduation, for a maximum of 3 months.



ACG Tertiary and Careers Programmes

2017 Starting Dates

ACG Yoobee School of Design

	NZQA Level	Length Weeks	2017 Starting Dates		
			Auckland	Wellington	Christchurch
Certificate in Digital Media (iCreate)	3	15	23 Jan	23 Jan	23 Jan
			8 May	8 May	3 April
			28 Aug	28 Aug	28 Aug
Diploma in Digital Design - Web and Graphic	5	40	27 Feb	27 Feb	27 Feb
			8 May	8 May	-
			24 July	-	24 July
			9 Oct	9 Oct	-
Diploma in Digital Design - Animation and Film Production	5	40	27 Feb	27 Feb	27 Feb
			8 May	8 May	-
			24 July	24 July	24 July
			9 Oct	9 Oct	-
Diploma in Digital Design*	6	40	27 Feb	27 Feb	27 Feb
			24 July	24 July	24 July
Diploma in Web Design and Production*	6	40	27 Feb	27 Feb	-
			24 July	24 July	24 July
Diploma in 3D Production*	6	40	27 Feb	8 May	24 July
Diploma in Screen Production*	6	40	8 May	27 Feb	24 July
Diploma in Game Art and Development (Year one)	7	37	27 Feb	8 May	-
Diploma in Game Art and Development (Year two)	7	37	-	27 Feb	-
Diploma in Advanced 3D Graphics	7	35	27 Feb	27 Feb	-
Diploma in Digital Media (Advanced)	7	35	27 Feb	27 Feb	-
			24 Jul	24 Jul	-

*Please note that the structures of the above programmes are currently under review to introduce recent innovation in the industry.
For the most up-to-date information please refer to yoobee.ac.nz

New Zealand Career College (NZCC)

Management	NZQA Level	Length Weeks	2017 Starting Dates	
			Auckland	Wellington
Diploma in Applied Management (Streams in Professional Retailing, Project Management, Health Management and Procurement & Supply Chain Management)	7	40	23 Jan	-
			17 Apr	-
			10 Jul	-
			2 Oct	-
Diploma in Early Childhood Education	5	40	-	27 Feb
			-	24 July

NZ School of Tourism

	NZQA Level	Length Weeks	2017 Starting Dates	Auckland Airport	Auckland City	Hamilton	Rotorua	Wellington Courtenay Pl	Wellington Willis St	Christchurch	Dunedin
The Tourism, Travel & Airline	3	22	6 Feb	■	■	■	■	■	■	■	■
			6 Mar	■	■	■	■	■	■	■	■
			17 Jul	■	■	■	■	■	■	■	-
Tourism, Hotel & Airline Operations	4	16	6 Feb	■	■	■	■	■	-	■	■
			31 July	■	■	■	■	■	■	■	■
			21 Aug	■	■	■	■	■	■	■	■
Certificate in International Flight Attending	4	14	27 Feb	■	■	■	-	-	■	■	■
			11 Sept	■	■	■	-	■	■	■	■
			9 Oct	■	■	■	■	■	■	■	-
Diploma in Tourism & Travel	5	32 (1 yr)	13 Feb	■	■	■	■	■	■	■	■
			12 Jun	■	■	■	■	■	■	■	■
Travel & Tourism Management Diploma	5	70 (2 yrs)	6 Feb	■	■	■	■	■	■	■	■
			6 Mar	■	■	■	■	■	■	■	■
			17 July	■	■	■	■	■	■	■	-
			4 Sept	■	■	■	■	■	■	■	-

NZMA

Starting Dates for 2017 Hospitality programmes:

23 January*, 27 February, 3 April, 8 May, 12 June, 24 July, 28 August, 9 October and 13 November.

The Level 7 Diploma starting dates are 27 February, 8 May, 24 July and 9 October only.

**New Zealand Diploma in Hospitality Management (Level 5) and Diploma in Applied Hospitality Management (Level 6) only.*

Hospitality	NZQA Level	Length Weeks	Location	
			Auckland	Hamilton
Certificate in Hospitality	3	20	■	■
Certificate in Hospitality (Restaurant Service)	4	20	■	■
New Zealand Diploma in Hospitality Management	5	40	■	■
Diploma in Applied Hospitality Management	6	80 (2 yrs)	■	-
Diploma in Tourism and Hotel Management	7	40	■	-

Starting Dates for all 2017 Cookery programmes:

27 February, 3 April, 8 May, 24 July, 9 October and 13 November.

Cookery				
Certificate in Cookery Level 3	3	20	■	-
Certificate in Cookery Level 4	4	40	■	-
Diploma Programme in Professional Cookery	5	80 (2 yrs)	■	-

Starting Dates for 2017 Business programme:

27 February, 3 April, 8 May, 12 June, 24 July, 28 August, 9 October and 13 November.

Business				
Diploma in Business (Advanced)	6	80 (2 yrs)	■	-

New Zealand Universities

New Zealand provides opportunities to study under internationally recognised academics and researchers in a wide range of disciplines.

Qualifications from New Zealand universities rank with the world's best and have a reputation for being practical and modern. In some niche areas, such as biotechnology, forensic science and marine engineering, New Zealand degrees are acknowledged as world-leading.

Students educated in New Zealand are earning a reputation as innovative thinkers, and are enjoying success the world over.

New Zealand has eight universities all of excellent quality. Each university has strengths in research and teaching across a range of disciplines.

The University of Auckland, AUT University and Massey University have campuses in Auckland, while Victoria University of Wellington, Massey University and the University of Otago have campuses in Wellington.

For detailed information, please visit the websites listed on this page or contact the international offices of each of the universities.

universitiesnz.ac.nz



The University of Auckland
auckland.ac.nz



AUT University
aut.ac.nz



Massey University
massey.ac.nz



The University of Waikato
waikato.ac.nz



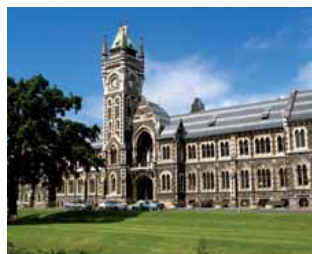
Victoria University of Wellington
victoria.ac.nz



The University of Canterbury
canterbury.ac.nz



Lincoln University
lincoln.ac.nz



The University of Otago
otago.ac.nz

Entry requirements for New Zealand Universities*

Successful completion of a university foundation studies programme or a high school equivalent to New Zealand Year 13, Cambridge AS/A Levels, International Baccalaureate (IB) Diploma, plus English proficiency as below:

Undergraduate degree level:

IELTS (Academic) score:

Overall score of 6.0 with no band less than 5.5

TOEFL score:

Paper-based

Total score of 550 with minimum of 4.0 in Test of Written English (TWE) or

Computer-based

Total score of 213 with minimum Essay rating of 4.0 or

Internet-based

Total score of 80

Minimum English proficiency at postgraduate level:

IELTS (Academic) score:

Overall score of 6.5 with no band less than 6.0

TOEFL score:

Paper-based

Total score of 575 with minimum of 4.5 in Test of Written English (TWE) or

Computer-based

Total score of 223 with minimum Essay rating of 4.5 or

Internet-based

Total score of 90

**These are average requirements which may differ slightly depending on the university/course.*

Scholarships

New Zealand International Scholarships are funded by the New Zealand Government and administered by Education New Zealand.

newzealandeducated.com

universitiesnz.ac.nz/scholarships

ACG offers a limited number of partial tuition scholarships to excellent students.

To apply, please contact:

admissions@acgedu.com



Visa requirements

Immigration New Zealand is the government authority responsible for issuing visas and permits to enter New Zealand. Please note that it can take four weeks or longer to process a student visa application. Detailed student visa and visitor visa application checklists for each country are available on the Immigration New Zealand website: immigration.govt.nz

Application requirements

To obtain a student visa, you have to be enrolled in an approved course at an educational institution that has been accredited to offer that course.

You can apply online from

immigration.govt.nz/secure/login+student

Your application will need:

- A recent passport-size photograph
- Payment of a non-refundable application fee
- An offer of place from an educational institution, which states that you have been accepted by the institution, the name of the course, the minimum time required to complete the course, and whether a course fee must be paid or the student is exempt from the fee (e.g. scholarship students). This will be sent to you by the institution confirming your enrolment.

- Evidence of sufficient funds to live on while you are studying (currently NZ\$15,000 per year or NZ\$1,250 per month)
- A return air ticket to your country, or evidence of sufficient funds to buy one
- A valid passport. If your application is approved, your passport must be valid for 3 months after your planned date of departure from New Zealand.
- Financial documents
- Educational certificates
- Evidence of having a comprehensive medical, travel and contents insurance policy which meets ACG's approval.

Medical checks

For courses longer than 6 months, you will need to provide an x-ray certificate that is less than 3 months old.

If you are 17 or over and intend to stay in New Zealand for 24 months or longer, you will need a police certificate from your home country, to show that you are of good character.

ACG online visa service*

ACG offers an online visa service for student visa variations and extensions once you arrive in New Zealand and commence your studies.

* Not available at all ACG campuses.

Get ready for New Zealand

Online planning tool to prepare you for New Zealand

nzready.com

Working while Studying

Student part-time/full-time work rights in New Zealand

nzstudywork.com

Student work rights

NZQA Level	Qualification	Student Work Rights (20 hours per week)	Student Work Rights (fulltime during school/ semester break and summer vacation)**	You may be entitled to a Post Study Work Visa (12 month visa) ^o
Level 1	Year 11 High School	-	-	-
Level 2	Year 12 High School	Yes, with permission from parents and school (min. age 16)	Yes, with permission from parents and school (if under 18)	-
Level 3	Year 13 High School / University Foundation Programme	Yes, with permission from parents and school (min. age 16)	Yes, with permission from parents and school (if under 18)	-
Level 4	National or NZ Certificate	Yes*	Yes	Two individual qualifications (second is higher than first) OR one qualification at the same level - min. study time 60 weeks#
Level 5	1st year Bachelor Degree / Certificate / Diploma	Yes	Yes + work visa for spouse and domestic fees for child's school education***	Two individual qualifications (second is higher than first) OR one qualification at the same level - min. study time 60 weeks#
Level 6	2nd year Bachelor Degree / Certificate / Diploma	Yes	Yes + work visa for spouse and domestic fees for child's school education***	Two individual qualifications (second is higher than first) OR one qualification at the same level - min. study time 60 weeks#
Level 7	3rd year Bachelor Degree / Graduate Certificate & Diploma / Diploma	Yes	Yes + work visa for spouse and domestic fees for child's school education***	Level 7 qualification (min. study time 30 weeks) = Post Study Work Visa
Level 8	Bachelor Honours Degree / Post Graduate Certificate & Diploma	Yes	Yes + work visa for spouse and domestic fees for child's school education	Level 8 qualification (min. study time 30 weeks) = Post Study Work Visa
Level 9	Master Degree	Yes (unlimited hours for Masters by research)	Yes + work visa for spouse and domestic fees for child's school education	Level 9 qualification (min. study time 30 weeks) = Post Study Work Visa
Level 10	PhD / Doctorate	Yes (unlimited hours)	Yes + work visa for spouse and domestic fees for child's school education	Level 10 qualification (min. study time 30 weeks) = Post Study Work Visa

^o If you have an offer of employment, relevant to your qualifications, you may apply for a 2-year Study to Work Visa. This work visa may be granted for 3 years if you are working towards obtaining membership or registration from a New Zealand professional association which requires more than two years of relevant practical work experience.

* If it is relevant to an occupation listed at Part B or C of Appendix 6 Immigration Policy Manual.

** Minimum course length for summer vacation must be 1 academic year (minimum 8 months study over two semester and more than 120 credits).

*** Work visa for spouse and domestic fees for child's school education, if qualification is in the area of skill shortage as specified in the Long Term Skill Shortage List. Qualification must lead to A Level 7 or higher qualification if at Level 5 or 6.

Two individual qualifications (total study time min. 60 weeks) where the second is higher than the first - e.g.: L4+L5 or L5+L6
OR one qualification e.g.: a L6 of min. 60 weeks study time.

Correct as at August 2016. Please refer to Immigration NZ for the most up to date information.

Living costs

New Zealand is an affordable study destination, with a high standard of living but lower costs than Sydney or London. International students should allow approximately NZ\$15,000 per year or NZ\$1,250 per month for living costs. Many students are eligible for working visas for part-time work during their stay.



What does it cost?	Approximate cost
Coffee, cappuccino or latte:	NZ\$4.50 to \$6.00
McDonald's Big Mac burger:	NZ\$5
Weekly accommodation:	NZ\$150 to \$325
Single ride bus ticket (one stage):	NZ\$1.28 to NZ\$2.50
To post a letter within New Zealand:	NZ\$1.00
Local phone calls from a home phone:	Free
Local calls made from a cell-phone (peak/off-peak per minute):	NZ\$0.22 to \$0.90
International phone calls (per minute):	from NZ\$0.44
Major international music event /concert:	NZ\$50 to \$175
Lunch from food hall or campus cafe:	NZ\$5 to \$15
Main meal at restaurant (off campus):	NZ\$15 to \$40
Pair of jeans:	NZ\$60 to \$200
Petrol (unleaded) per litre:	NZ\$1.77 to NZ\$1.86
Parking per hour rate:	NZ\$2 to \$6
Parking per day rate:	NZ\$7.50 to \$25
Visit to doctor:	NZ\$60 to \$85
Groceries per week (if not in homestay):	NZ\$100 to \$150

Medical and travel insurance

ACG arranges your medical and travel insurance to help you with your transition to living in New Zealand. A health nurse is employed by ACG and a medical doctor is available by appointment.

All international students in New Zealand are required to have comprehensive medical and travel insurance. This will be arranged by ACG. We use the Southern Cross Travel International Student Policy, which has been specifically developed for international students by New Zealand's largest health insurer.

The policy will cover you on your journey to and from New Zealand and for the time you spend in New Zealand. You may claim for baggage damage or loss, travel delay, loss of deposits, documents and money, medical costs and many other incidents.

The annual international student insurance policy fee is currently NZ\$500.

scti.co.nz/international-student-health.govt.nz



Relax...

**There's no need to worry,
so you can focus on
your study.**

**We can cover you for medical expenses,
doctors visits, emergency dental
treatment and much more.***



**Southern Cross
Travel Insurance**



Southern Cross Travel Insurance is a trusted partner of ACG. For further information contact Academic Colleges Group, or visit our website www.internationalstudent.co.nz

*These benefits must be read in conjunction with the policy wording
Underwritten by Southern Cross Benefits Limited.

All enquiries and applications to:

ACG Education

International Centre, ACG Pathways Campus, 345 Queen Street, Auckland

PO Box 6199, Wellesley Street, Auckland 1141, New Zealand

Tel: +64-9-307 5399. Fax: +64-9-377 7125

Email: admissions@acgedu.com

acgedu.com



Code of Practice for the Pastoral Care of International Students

CODE: ACG and its schools have agreed to observe and be bound by the Code of Practice for the Pastoral Care of International Students published by the Minister of Education. Copies of the Code are available on request from this institution or from the New Zealand Ministry of Education website at legislation.govt.nz/regulation/public/2016/0057/latest/DLM6748147.html

IMMIGRATION: Full details of visa and permit requirements, advice on rights to employment in New Zealand while studying, and reporting requirements are available through Immigration New Zealand, and can be viewed on their website at immigration.govt.nz

ELIGIBILITY FOR HEALTH SERVICES: Most international students are not entitled to publicly funded health services while in New Zealand.

If you receive medical treatment during your visit, you may be liable for the full costs of that treatment. Full details on entitlements to publicly-funded health services are available through the Ministry of Health, and can be viewed on their website at moh.govt.nz

ACCIDENT INSURANCE: The Accident Compensation Corporation provides accident insurance for all New Zealand citizens, residents and temporary visitors to New Zealand, but you may still be liable for all other medical and related costs. Further information can be viewed on the ACC website at acc.co.nz

MEDICAL AND TRAVEL INSURANCE: International students must have appropriate and current medical and travel insurance while studying in New Zealand.

It is a requirement for all international students

studying with ACG to have comprehensive medical and travel insurance cover. Students can either have the cover arranged by ACG or produce evidence at the time of application that they have insurance cover from another company that meets the approval of ACG.

New Zealand Government Export Education Levy will be added to all International Tuition Fees - the current rate is 0.45%.

As at August 2016, every attempt was made to present accurate information in this prospectus. ACG reserves the right to change without notice programmes, terms and conditions both before and after students' admission.

For the most up to date course information, please refer to acgedu.com