

International

STUDY GUIDE 2017



tomorrow, the future

WHITIREIA, A GOVERNMENT OWNED
INSTITUTE OF TECHNOLOGY

VISIT

WWW.WHITIREIA.AC.NZ

FOR MORE INFORMATION

call: +64 4 237 3100
email: international@whitireia.ac.nz

— or —

call: +64 9 379 4666
email: auckland@whitireia.ac.nz



**WHITIREIA
OFFERS
YOU**





**WHITIREIA
IS A REAFFIRMED
CATEGORY 1
PROVIDER**

highly confident in
educational performance
and self-assessment*

Whitireia is a government owned and funded tertiary Institute of Technology (ITP), known for its high student success rates and culturally diverse student body. With excellent student support, students are helped and encouraged throughout the duration of their study journey with us. This help ensures students achieve their academic goals. Student support services are accessible to all who study here.

Whitireia has grown over the last 30 years to become a tertiary institution of choice for over 8,000 students (over 4,700 equivalent full-time students), who study at one of our contemporary campuses in Auckland, Wellington, Porirua and Kāpiti.

In 2017 over 120 programmes of study will be offered to students, covering certificate, diploma, degree, postgraduate and master's levels. All programmes have been developed in conjunction with industry to offer excellent applied qualifications; all approved within the New Zealand Qualifications Authority (NZQA), New Zealand Qualifications Framework.



**WHITIREIA IS
NO.1
IN COURSE
COMPLETIONS****

**New Zealand Qualifications
Authority External Evaluation
Review 2015*

***The Performance of Tertiary
Education Organisations Report
2014, ranked against 18 other
Institutes of Technology and
Polytechnics in New Zealand*



For information on preparing for student life in New Zealand check out **www.immigration.govt.nz** and **www.studyinnewzealand.govt.nz**. Here you will find practical advice and information that will assist you in your move to New Zealand. You can also check out **www.whitireia.ac.nz** where you will find information about studying in New Zealand and more importantly information that is unique to studying with us.



LEARNING STREET, WIKITORIA KATENE BUILDING, PORIRUA CAMPUS



ENTRY REQUIREMENTS

World entry requirements

We recognise qualifications from a number of countries as suitable entry into our programmes of study. This is a guide only. Check the list on the opposite page. If your qualification is not included call us for more information.

Degree academic entry requirements

Some of our degree programmes have different or specific entry requirements. Check our website for the entry requirements needed for the programmes listed in this study guide.

Note: some of our degree programmes require a higher level of English language competence. Postgraduate level study may also have different entry requirements e.g. higher level English language and also the relevancy of undergraduate degree and work experience etc.

English language requirements

International students wishing to enrol on a Whitireia academic programme may take a Whitireia English language Entry test. Taking this test may be an alternative to completing an IELTS, TOEFL, Pearsons (PTE), depending on what country you are from. Whitireia is a Category 1 provider and is authorised by NZQA to offer English language testing. Students will be tested on their reading, writing, listening and speaking.

Alternatively, students may wish to enrol on one of our English language programmes. These programmes help you learn, understand, speak and write English for study, work and everyday life in New Zealand.

For detailed information on our English language programmes check our website, call us or speak to one of our agents.

World entry requirements

COUNTRY	DIPLOMA ENTRY REQUIREMENTS	DEGREE ENTRY REQUIREMENTS
Argentina	Bachillerato Especializado	Successful completion of one year's tertiary study at a recognised institution
Australia	Successful completion of Year 12	Completion of Year 12 with a minimum Australian Tertiary Admission Rank (ATAR) score 69.6
Bangladesh	Higher Secondary Certificate with 60% average	Successful completion of two year's tertiary study from a recognised institute
Brazil	Completion of high school (third year of second level)	Successful completion of two year's tertiary study from a recognised institute
Chile	Licencia de Education Media or Tecnico Medio o PSU	Successful completion of two year's tertiary study from a recognised institute
China	High School Diploma	High School Diploma
Fiji	Fiji School Leaving Certificate	Fiji form 7, aggregate over four subjects of 250, with a minimum of 50 in English or; USP Foundation year 7 passes with a minimum of C in communication
Germany	Mittlere Reife/realschulabschluss	Successful completion of senior high school - Abitur
Hong Kong	H.K. Certificate of Education (HKCEE)	Diploma of Secondary Education with three subjects achieved at Level 4 or better, including English and two elective subjects
India	Higher Secondary Certificate (standard xii), minimum 60%	Successful completion of two years tertiary study from a recognised institute; or an overall average over four subjects (not including native languages and non-academic subjects) of 75% in either the Higher Secondary School Examination or the All India Senior Secondary School Certificate, with a minimum of 60% in English
Indonesia	SMU 7.0 or Year 3	Successful completion of one year's tertiary study at a recognised institution or; SMU with an average of 8.5
Japan	Upper Secondary School Leaving Certificate	Successful completion of High School Diploma with a B average
Malaysia	SPM, or Chinese unified exams	STPM with three principal passes or; MICSS at least six subjects with a score of 15 points or better in at least five of these subjects (must not include more than one language)
Mexico	Successful completion of a qualification equivalent to New Zealand Year 12	Successful completion of one year's tertiary study at a recognised institution
Nepal	Proficiency Certificate with a grade average of 65%	Proficiency certificate with a grade average of 80% or; Bachelor degree with upper division
Pacific Islands	Successful completion of year 12 (6th form)	Successful completion of year 13 (7th form) or foundation programme of USP
Pakistan	Higher Secondary School Certificate with 60% average	Successful completion of one year's tertiary study at a recognised tertiary institution
Philippines	National College Entrance Exam	Successful completion of two year's tertiary study at a recognised tertiary institution
Russia	Certificate of Secondary Education or Certificate of Maturity	Successful completion of one year's tertiary study at a recognised tertiary institution
Samoa	Completion of High School	Successful completion of one year's tertiary study at a recognised tertiary institution
Saudi Arabia	General Secondary Education Certificate with a minimum overall mark of 60%	Successful completion of one year's tertiary study at a recognised tertiary institution
Singapore	CEO O level in four subjects	GCE A Levels, with three passes
Sri Lanka	GCE O Levels	GCE A Levels with three passes in relevant subjects
South Korea	Completion year 2 Senior High School	Senior High School Diploma
Taiwan	Senior High School Diploma second year of completion	Senior High School Diploma
Thailand	Matayom six with a grade point average of 2.5	Matayom 6 with either 80% or more of grades at Level 4 or a GPA of 2.5 or higher, with a relevant subject mix or; successful completion of one year's tertiary study at a recognised tertiary institution
Tonga	Successful completion of year 12 (6th form)	Successful completion of year 13 (7th form)
United Arab Emirates	70% or better in Tawajihyya (Secondary School Certificate)	Successful completion of one year's tertiary study at a recognised tertiary institution
United Kingdom	A and AS Levels GCSE (Higher Grades)	Successful completion of GCE A Levels with three C's or better
Vietnam	High School Diploma or Universal graduation with a grade 7 when out of 10 or 30 when out of 40	Successful completion of one year of tertiary study from a recognised institution



IMPORTANT INFORMATION

Code of Practice

Whitireia has agreed to observe and be bound by the Code of Practice for the Pastoral Care of International Students, published by the Minister of Education. You can check out our website for more information on this code.

Copies of the code are available on request from us or can be downloaded from: **www.nzqa.govt.nz/providers-partners/education-code-of-practice**

Immigration

Full details of visa and permit requirements, advice on rights to employment in New Zealand while studying, and reporting requirements can be downloaded from **www.immigration.govt.nz/new-zealand-visa**.

You can also check our website for more information on immigration requirements.

Health Services

Most international students are not entitled to publicly funded health services while in New Zealand. If medical treatment is received during your study visit, you may be liable for the full cost of that treatment. Full details on entitlements can be viewed at **www.health.govt.nz/search/results/entitlements**

Insurances

Medical and Travel Insurance

International students must have appropriate and current medical and travel insurance while studying in New Zealand. This can be purchased through our International Information and Enrolment teams during your enrolment process.



STUDENT ACCOMMODATION



There are a range of accommodation options available to you when you study with us.

We strongly recommend homestay accommodation when you first arrive. Homestay providers are carefully selected by us. A homestay experience is a great way to learn about New Zealand and our culture. You will be provided with a bedroom and you will share evening meals with your host family.

Other accommodation options available include rented accommodation either on your own or sharing with others and student hostel accommodation.

A small amount of on-campus accommodation is available for international students who study at our Porirua campus. Contact us for more information.

Through our strategic partnership with WelTec, students who study with us in Wellington and Porirua also have access to 222Willis, a safe and secure modern apartment style of student accommodation.

Check out www.222willis.co.nz for more information.



— CENTRAL WELLINGTON —

LIVE
SAFE & SECURE
IN OUR MODERN
APARTMENTS



STUDENT SUPPORT

Academic Support

All Whitireia campuses provide academic and learning support. We have staff available who are experienced in working with international students.

Counselling

A confidential, seven-day, 24-hour self-referral counselling service is provided off-campus by Vitae. Vitae is a professional company that provides Whitireia students with access to a team of independent counsellors and psychologists throughout New Zealand. Students are entitled to three free counselling sessions per year.

Health

A health nurse is available by appointment at our Porirua campus. This service is free. Other health services available at our Porirua campus include a doctor, physiotherapist, massage therapist and hearing therapist. There may be a minimal charge for some of these services.

Medical appointments can be arranged for students studying at our campuses in Wellington, Kāpiti and Auckland.

Information & Enrolment

Our International Information & Enrolment teams are the first point of contact for prospective and current students. Teams are located at our campuses in Porirua and Auckland, they provide programme information, assistance with the enrolment process, student ID cards and fee payment facilities.

You can also seek homestay and insurance claim assistance from the team and renew your visa online here as well.

Library

Our library provides students with a wide range of resources including books, journals, audio-visual items, newspapers, many online databases, eBooks, study spaces and computers.

Pacific Students

Our Pacific Success Advisor at our Porirua campus, provides the cultural and pastoral support to our Pacific students. Programmes and networks have been developed to support and enhance the success of Pacific students.

Pastoral Care

Whitireia adheres to the Code of Practice for the Pastoral Care of International Students and has specialist support staff available to support all our international students.

Student Support Services

Both Auckland and Porirua campuses have international student groups who assist with and organise events and activities. These groups are vital for communication between Whitireia and international students. They provide a student voice and assist with advice on helping you settle into your new study environment. We have student support co-ordinators that provide pastoral care and support for you while you study with us.

VISIT

WWW.WHITIREIA.AC.NZ

FOR MORE INFORMATION

call: +64 4 237 3100
email: international@whitireia.ac.nz

— or —

call: +64 9 379 4666
email: auckland@whitireia.ac.nz



Work Placement Officer/Job Broker

A work placement officer is onsite at our Auckland campus. You can make an appointment to chat about your employment options.

Our job broker who works across our Wellington campuses can assist international students obtain part-time work while studying and graduate employment.

Career guidance and preparing international students for graduate employment is available across all our Wellington campuses and Auckland campus.

Worshipping on Campus

Arrangements can be made for worship at any of our campuses.

Visa & Immigration Services

Our Porirua and Auckland campuses have staff available to assist new and existing students with any visa and immigration requirements.

VISIT

WWW.WHITIREIA.AC.NZ

FOR MORE INFORMATION

call: +64 4 237 3100
email: international@whitireia.ac.nz

— or —

call: +64 9 379 4666
email: auckland@whitireia.ac.nz



Important dates 2017

Monday 9 January	All campuses open	
Monday 23 January	Wellington Anniversary Day	Porirua, Wellington, Kāpiti campuses closed
Monday 30 January	Auckland Anniversary Day	Auckland campus closed
Monday 6 February	Waitangi Day	All campuses closed
Friday 14 April	Good Friday	All campuses closed
Monday 17 April	Easter Monday	All campuses closed
Tuesday 18 April	Easter Tuesday (tertiary holiday)	All campuses closed
Tuesday 25 April	ANZAC Day	All campuses closed
Monday 5 June	Queen's Birthday	All campuses closed
Monday 23 October	Labour Day	All campuses closed
Tuesday 20 December	Christmas/New Year break	All campuses close at 5pm

Porirua, Wellington & Kāpiti campuses

13 FEBRUARY		Semester one begins
		Commencement of most academic programmes
		Orientation week begins
17 JULY		Semester two begins
		Commencement of most academic programmes
		Orientation week begins

Auckland campus

7 FEBRUARY – 12 MAY	Trimester one begins
29 MAY – 25 AUGUST	Trimester two begins
11 SEPTEMBER – 8 DECEMBER	Trimester three begins



OUR PROGRAMME GUIDE

We have a range of programmes
available for study that will help you
reach your study and career goals.
For 2017 these are as follows



English Language

PROGRAMME	LEVEL	LOCATION	START DATES	DURATION	FEES (NZ\$)
English Language Skills	7 levels	Auckland & Porirua	Intakes start any Monday	Up to 48 weeks Full-time	\$399 per week

Arts

PROGRAMME	LOCATION	START DATES	DURATION	LEVEL	ENTRY IELTS	FEES (NZ\$)
-----------	----------	-------------	----------	-------	-------------	-------------

COMMUNICATION MEDIA

Bachelor of Applied Arts (Creative Writing)	Wellington	13 February	Three years Full-time	7	6.0 (no band lower than 5.5)	\$19,950 each year
Graduate Diploma in Creative Writing	Wellington	13 February	One year Full-time	7	6.0 (no band lower than 5.5)	\$19,950
Diploma in Creative Writing (Advanced)	Wellington	13 February	One year Full-time	6	6.0 (no band lower than 5.5)	\$19,950
Diploma in Creative Writing	Wellington	13 February	One year Full-time	5	6.0 (no band lower than 5.5)	\$19,950
National Diploma in Journalism (Multi-media) (Level 5)	Auckland & Wellington	17 July	One year Full-time	5	6.5 (no band lower than 6.0)	\$19,950
Certificate in Multimedia Journalism	Wellington	7 February	Six months Full-time	4	6.5 (no band lower than 6.0)	\$11,950
Diploma in Radio Journalism [optional endorsement in Broadcasting] <i>(offered by the New Zealand Radio Training School, part of Whitireia New Zealand Limited)</i>	Auckland & Wellington	24 July	One year Full-time	5	6.5 (no band lower than 6.0)	\$19,950
National Certificate in Radio (Foundation Skills) <i>(offered by the New Zealand Radio Training School, part of Whitireia New Zealand Limited)</i>	Wellington	7 February 17 July	Six months Full-time	3	6.0 (no band lower than 5.5)	\$10,950
Certificate in Introduction to Film and Television Production <i>(offered by The New Zealand Film and Television School, part of Whitireia New Zealand Limited)</i>	Wellington	7 February 10 July	One year Full-time	5	5.5 (no band lower than 5.0)	\$31,250

MUSIC

Bachelor of Applied Arts (Music)	Porirua	13 February	Three years Full-time	7	6.0 (no band lower than 5.5)	\$19,950 each year
Graduate Diploma in Applied Arts	Porirua	13 February	One year Full-time	7	6.0 (no band lower than 5.5)	\$19,950
Certificate in Rock, Jazz and Commercial Music	Porirua	30 January	One year Full-time	4	5.5 (no band lower than 5.0)	\$19,950
Certificate in DJ Music	Porirua	30 January	One year Full-time	4	5.5 (no band lower than 5.0)	\$19,950
Certificate in Live Sound and Event Production	Porirua	7 February	One year Full-time	4	5.5 (no band lower than 5.0)	\$19,950
Certificate in Foundation Music	Porirua	10 July	Six months Full-time	3	5.5 (no band lower than 5.0)	\$11,950

PROGRAMME	LOCATION	START DATES	DURATION	LEVEL	ENTRY IELTS	FEES (NZ\$)
PERFORMING ARTS						
Bachelor of Applied Arts (Performing Arts)	Wellington	13 February	Three years Full-time	7	6.0 (no band lower than 5.5)	\$23,500 each year
Graduate Diploma in Applied Arts	Wellington	13 February	One year Full-time	7	6.0 (no band lower than 5.5)	\$19,950
Diploma in Stage and Screen Arts	Wellington	13 February	Two years Full-time	6	6.0 (no band lower than 5.5)	\$19,950 each year
Diploma in Performing Arts (Dance) <i>(offered by Whitireia New Zealand Limited)</i>	Wellington	13 February	Two years Full-time	6	6.0 (no band lower than 5.5)	\$20,250 each year
Diploma in Performing Arts (Dance) [specialisation in Circus]	Wellington	13 February	Two years Full-time	6	6.0 (no band lower than 5.5)	\$20,250 each year
Diploma in Performing Arts (Singing) <i>(Offered by Whitireia New Zealand Limited)</i>	Wellington	13 February	Two years Full-time	6	6.0 (no band lower than 5.5)	\$20,250 each year
VISUAL ARTS & DESIGN						
Bachelor of Applied Arts (Visual Arts and Design)	Porirua	13 February	Three years Full-time	7	6.0 (no band lower than 5.5)	\$19,950 each year
Graduate Diploma in Applied Arts	Porirua	13 February	One year Full-time	7	6.0 (no band lower than 5.5)	\$19,950
New Zealand Diploma in Jewellery*	Porirua	13 February	One year Full-time	5	5.5 (no band lower than 5.0)	\$19,950
New Zealand Diploma in Digital Media and Design*	Auckland	7 February 29 May 11 September	One year Full-time	5	5.5 (no band lower than 5.0)	\$19,950
	Porirua	13 February				
New Zealand Diploma in Digital Media and Design*	Auckland	7 February 29 May 11 September	One year Full-time	6	5.5 (no band lower than 5.0)	\$19,950
	Porirua	13 February				
New Zealand Diploma in Photography* <i>(offered in partnership with The Photo School)</i>	Kāpiti	13 February 17 July	One year Full-time	5	5.5 (no band lower than 5.0)	\$13,950
ARTS MANAGEMENT						
Bachelor of Applied Arts (Arts Management)	Porirua	13 February	Three years Full-time	7	6.0 (no band lower than 5.5)	\$19,950 each year
TEACHING						
Bachelor of Teaching (Early Childhood Education)	Auckland	7 February 29 May 11 September	Three years Full-time	7	7.0 in all bands	\$19,950 each year
	Porirua	13 February				
Diploma in Early Childhood Education	Auckland	7 February 29 May 11 September	Two years Full-time	5	5.5 (no band lower than 5.0)	\$19,950 each year
	Porirua	13 February				

*Subject to NZQA approval

Business

PROGRAMME	LOCATION	START DATES	DURATION	LEVEL	ENTRY IELTS	FEES (NZ\$)
BUSINESS						
Master of Management [specialise in Finance, Marketing, Hospitality, Information Systems]	Auckland	7 February 29 May 11 September	18 months Full-time	9	6.5 (no band lower than 6.0)	\$21,000 year one \$10,500 year two
Postgraduate Diploma in Management [specialise in Finance, Marketing, Hospitality, Information Systems]	Auckland	7 February 29 May 11 September	One year Full-time	8	6.5 (no band lower than 6.0)	\$21,950
	Wellington	29 February 13 June 26 September				
Bachelor of Applied Business Studies [major in Finance, Marketing, Hospitality, Management]	Auckland	7 February 29 May 11 September	Three years Full-time	7	6.0 (no band lower than 5.5)	\$18,950 each year
	Porirua	13 February 17 July				
Graduate Diploma in Applied Business Studies	Auckland	7 February 29 May 11 September	One year Full-time	7	6.0 (no band lower than 5.5)	\$18,950
	Porirua	13 February 17 July				
New Zealand Diploma in Business*	Auckland	7 February 29 May 11 September	One year Full-time	5	5.5 (no band lower than 5.0)	\$18,950
	Porirua	13 February 17 July				

*Subject to NZQA approval



Information Technology

PROGRAMME	LOCATION	START DATES	DURATION	LEVEL	ENTRY IELTS	FEES (NZ\$)
INFORMATION TECHNOLOGY						
Master of Information Technology [specialise in Information Systems, Network Technologies, Data Mining, Software Development]	Wellington	ICT Grad School February July (Contact us)	18 months Full-time	9	6.5 (no band lower than 6.0)	\$21,000 (year one)
	Auckland	7 February 29 May 11 September				\$10,500 (year two)
	Porirua	13 February 17 July				
Postgraduate Diploma in Information Technology [specialise in Information Systems, Network Technologies, Data Mining, Software Development]	Wellington	ICT Grad School February July (Contact us)	One year Full-time	8	6.5 (no band lower than 6.0)	\$21,950
	Auckland	7 February 29 May 11 September				
	Porirua	13 February 17 July				
Bachelor of Information Technology (see note below re accreditation of this programme)	Auckland	7 February 29 May 11 September	Three years Full-time	7	6.0 (no band lower than 5.5)	\$19,950 (each year)
	Porirua	13 February 17 July				
Graduate Diploma in Information Technology	Auckland	7 February 29 May 11 September	One year Full-time	7	6.0 (no band lower than 5.5)	\$19,950
	Porirua	13 February 17 July				
New Zealand Diploma in Information Systems (Level 6)*	Auckland	7 February 29 May 11 September	One year Full-time	6	6.0 (no band lower than 5.5)	\$19,950
	Porirua	13 February 17 July				
New Zealand Diploma in Information Systems (Level 5)*	Auckland	7 February 29 May 11 September	One year Full-time	5	5.5 (no band lower than 5.0)	\$19,950
	Porirua	13 February 17 July				
New Zealand Certificate in Information Technology (Level 5)*	Porirua	13 February 17 July	Half year Full-time	5	5.5 (no band lower than 5.0)	\$10,950

*Subject to NZQA approval

The Bachelor of Information Technology is one of a select set of New Zealand degree programmes accredited and endorsed by the Institute of IT Professionals (IITP) as providing the best pathway into the technology industry. IITP accreditation focuses on the outcomes needed by industry, and is linked to the international Seoul Accord agreement meeting the needs of the international technology community and providing international recognition and portability for students.

Health

PROGRAMME	LOCATION	START DATES	DURATION	LEVEL	ENTRY IELTS	FEES (NZ\$)
NURSING, PARAMEDIC & SOCIAL WORK						
Master of Professional Practice <i>(delivered in partnership with Wellington Institute of Technology)</i>	Porirua	Please contact us	18 months Full-time	9	7.0 in each band	\$25,700 year one \$12,850 year two
Bachelor of Nursing	Porirua	13 February	Three years Full-time	7	6.5 in each band	\$23,950 each year
Bachelor of Nursing Pacific	Porirua	13 February	Three years Full-time	7	6.5 in each band	\$23,950 each year
Bachelor of Health Science (Paramedic)	Porirua	13 February	Three years Full-time	7	6.5 (no band lower than 6.0)	\$22,950 each year
Bachelor of Social Work	Porirua	13 February	Four years Full-time	7	7.0 in each band	\$21,950 each year
Competency Assessment Programme for Nurses (CAP)	Porirua	Please contact us	Two weeks of theory and a minimum of five weeks clinical	7	7.0 in each band	\$7,250
New Zealand Certificate in Study and Career Preparation*	Porirua, Kāpiti, Wellington & Petone	13 February 10 July	Half year Full-time	3	5.5 (no band lower than 5.0)	\$19,950
New Zealand Certificate in Study and Career Preparation*	Porirua, Kāpiti, Wellington & Petone	13 February 10 July	Half year Full-time	4	5.5 (no band lower than 5.0)	\$19,950

*Subject to NZQA approval



VISIT

WWW.WHITIREIA.AC.NZ

FOR MORE INFORMATION

call: +64 4 237 3100
email: international@whitireia.ac.nz

— or —

call: +64 9 379 4666
email: auckland@whitireia.ac.nz



Trades & Services

PROGRAMME	LOCATION	START DATES	DURATION	LEVEL	ENTRY IELTS	FEES (NZ\$)
-----------	----------	-------------	----------	-------	-------------	-------------

OUTDOOR ADVENTURE

Diploma in Outdoor Adventure	Kāpiti	13 February	One year Full-time	5	5.5 (no band lower than 5.0)	\$19,950
Certificate in Outdoor Adventure	Kāpiti	13 February	One year Full-time	3	5.5 (no band lower than 5.0)	\$19,950

AUTOMOTIVE ENGINEERING

Certificate in Motor Industry (Automotive Electrical and Mechanical Engineering)	Porirua	13 February	Three years Full-time	4	5.5 (no band lower than 5.0)	\$19,950 each year
--	---------	-------------	-----------------------	---	------------------------------	--------------------

PROFESSIONAL COOKERY

Diploma in Professional Cookery	Auckland & Porirua	7 February 29 May 11 September	Two years Full-time	5	5.5 (no band lower than 5.0)	\$19,995 year one
	Kāpiti	7 February 29 May				\$9,995 year two
Diploma in Hospitality Management	Auckland	7 February 29 May 11 September	Two years Full-time	5	5.5 (no band lower than 5.0)	\$19,550 year one \$9,950 year two
New Zealand Certificate in Hospitality (Level 2)	Auckland	13 February 6 June 11 September	12 weeks Full-time	2	5.0 (no bands lower than 5.0)	\$6,500
	Porirua, Kāpiti & Wellington	13 February 22 May 28 August				

BEAUTY & HAIRDRESSING

Certificate in Beauty Therapy	Porirua	13 February	One year Full-time	4	5.5 (no band lower than 5.0)	\$19,950
Certificate in Beauty and Styling*	Porirua & Kāpiti	13 February	One year Full-time	3	5.5 (no band lower than 5.0)	\$19,950

*Subject to NZQA approval



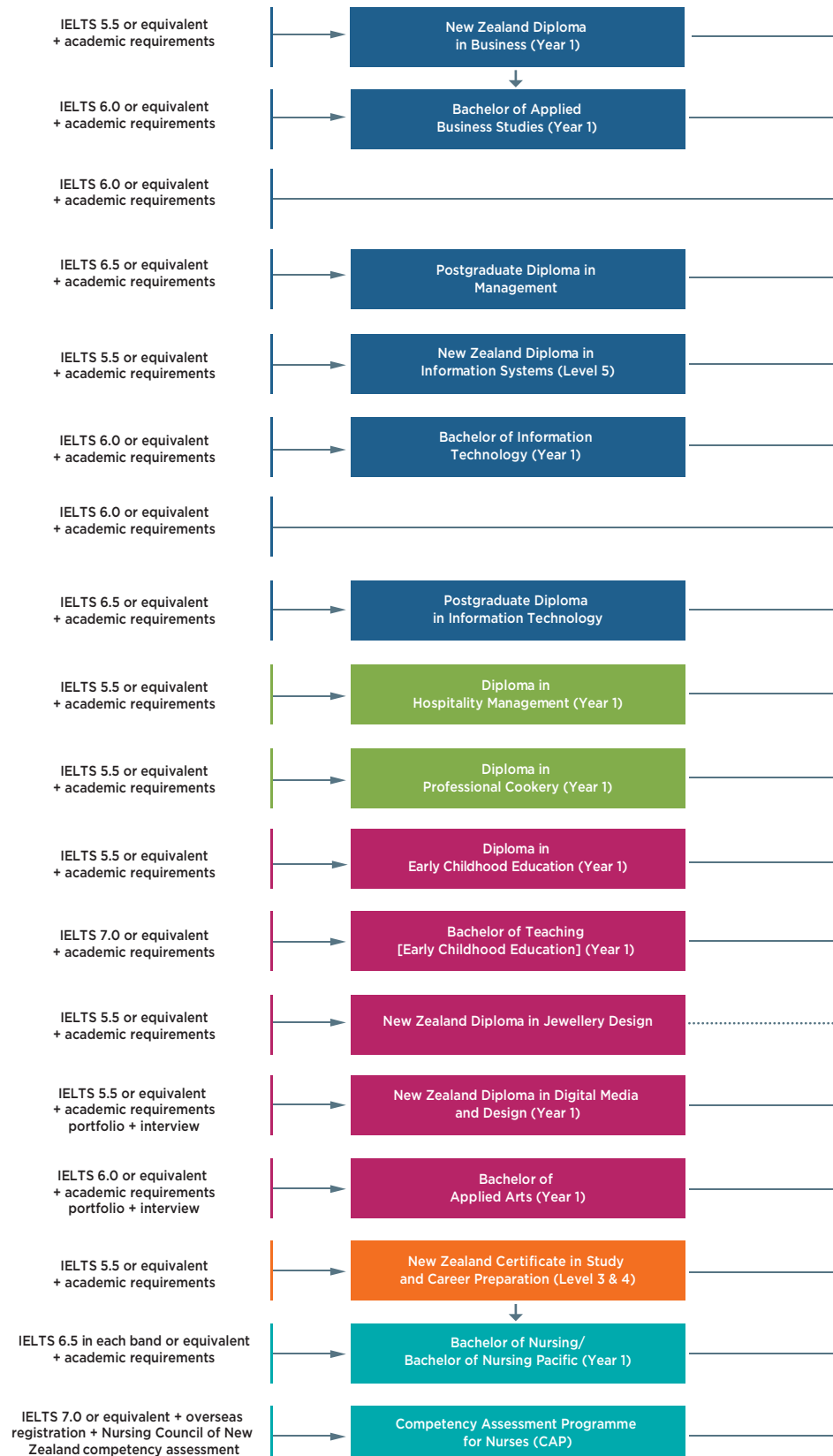
ADDITIONAL FEES

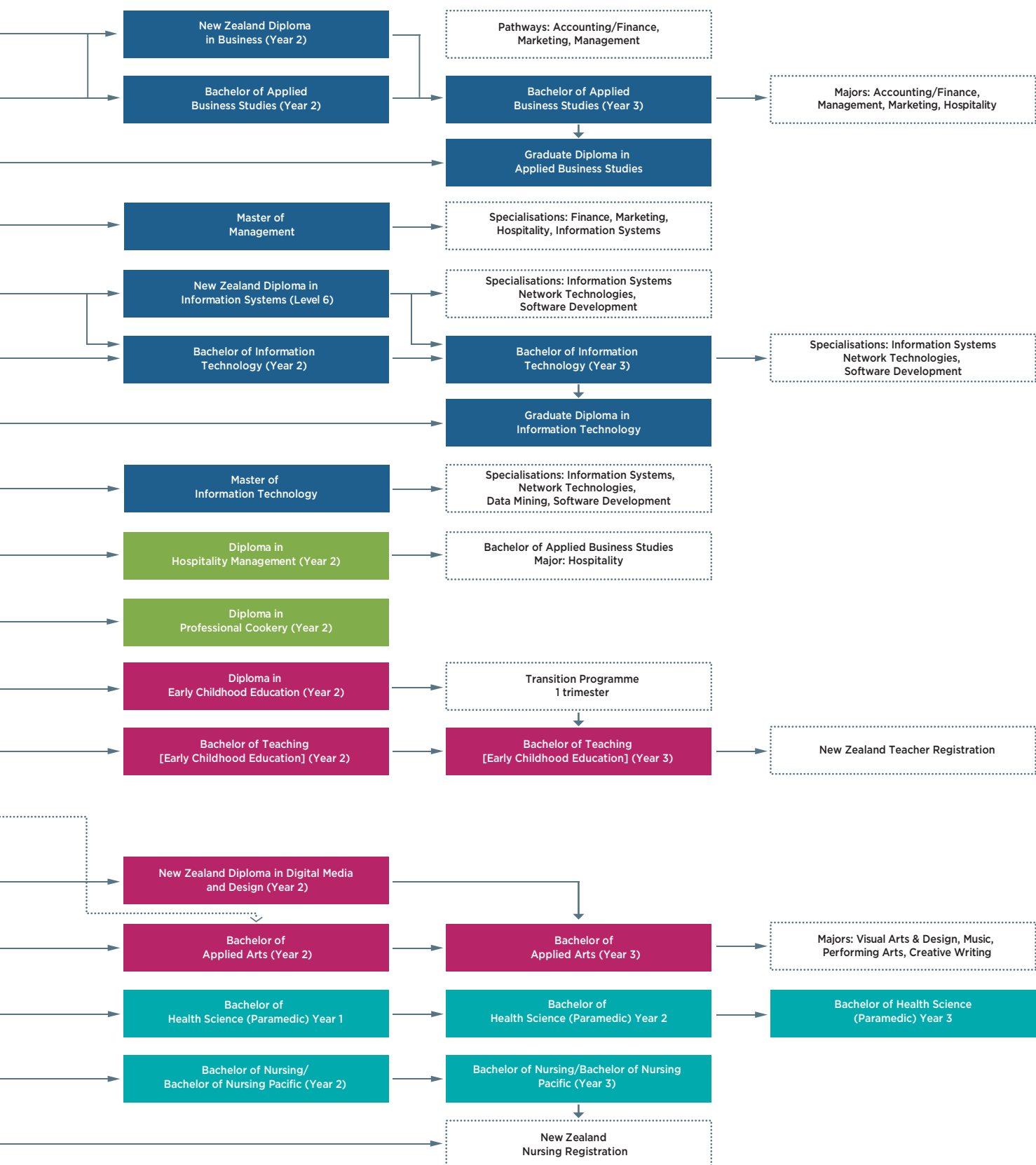
As well as the programme fee you will pay to study with us, there is also a range of additional fees that are also payable, these include:

- NZ\$200** – Registration fee*
(one off fee payable in the first year of enrolment only)
 - NZ\$220** – Homestay placement fee**
 - NZ\$250** – Homestay weekly fee**
(including two meals on weekdays and three meals on weekends)
 - NZ\$95** – Airport transfer fee**
 - NZ\$50** – Whitireia English testing fee
(this is only payable if you are not a current student)
- *Compulsory | **Optional



PATHWAYS







FAQs

How do I apply to enrol?

Apply to enrol either in person, online, by post or through an agent.

What do I need to provide?

A completed Application to Enrol form, a verified copy of your birth certificate or passport plus any additional entry requirement information (such as health declaration, references, safety check, criminal convictions declaration, record of learning, academic transcripts/records) if applicable. You also need to provide evidence of IELTS or equivalent English certificate.

Why do we ask for your passport?

We need proof of your legal name, date of birth and citizenship or residency. If your name has changed you will also need to provide proof of the change e.g. marriage certificate. You must also provide proof of eligibility to study in New Zealand (visa and residency status).

How long does it take to confirm my enrolment?

Enrolment information will be sent back to you directly or to your agent if you enrolled in this way.

When do I pay my fees?

If you are in New Zealand you can pay your fees after you have been offered a place on the programme you applied for, and you have confirmed your acceptance on this.

If you are overseas, in principle, you will pay your fees when you receive your visa approval from immigration.

How do I get in contact with an agent?

Access to a list of authorised agents is available on our website.

How and when do I get my student ID card?

After your enrolment has been completed, visit our International Information & Enrolments team at our Porirua or Auckland campuses and they'll organise it for you. You will need a student ID card to print, photocopy, access the library, the computer networks and other student support services at Whitireia.

Can I decide to withdraw from part or all of my programme of study?

If you change your mind before your programme starts please contact us. You will need to complete a Withdrawal form. The circumstances and timing of your withdrawal will determine what you are eligible for. The Whitireia Student Withdrawal policy applies.

Can I work while I study?

If you are studying with us full-time at Level 5 or higher you are able to work for 20 hours per week and full-time during the holidays.

How do I get a full-time student visa?

You've paid your tuition fees to us and we have issued you a receipt, you then obtain a student visa either by direct approach to Immigration New Zealand in your country or let your agent do this for you.

Can I buy insurance through Whitireia?

You can apply through us for travel and medical insurance.

contact us

**WITH ANY
QUESTIONS YOU HAVE**
about our programmes, studying with us, studying in New Zealand, or if there is anything else you would like to

KNOW

New Zealand

PORIRUA

call: +64 4 237 3100

email: international@whitireia.ac.nz

AUCKLAND

call: +64 9 379 4666

email: auckland@whitireia.ac.nz

India

NEW DELHI

+ 91 124 663 7694

email: indiaoffice@whitireia.in

BANGALORE

+ 91 806 720 5610

email: indiaoffice@whitireia.in

China

+ 86 106 416 4510

email: china@whitireia.ac.nz

VISIT

WWW.WHITIREIA.AC.NZ



HOW TO ENROL

VISIT

WWW.WHITIREIA.AC.NZ

FOR MORE INFORMATION

call: +64 4 237 3100

email: international@whitireia.ac.nz

— or —

call: +64 9 379 4666

email: auckland@whitireia.ac.nz



Ok, so you want to study with us.

Here's what you need to do.

01

Apply to enrol

THROUGH AN AGENT

Agents can help you find out about studying with us. Agents are often one of the most important parts of the process helping you make important decisions about your international study. What to study? Who to study with? How to enrol? How to successfully gain a student visa? etc. They will guide you in the process you need to go through from programme selection, enrolment and successfully getting a visa. Make sure you choose an agent with a proven track record. We can refer you to one or more agents in your city and you can choose who you want to work with. They usually don't charge you anything for this service. They may though, so check this out too.

A list of authorised agents can be found on our website.

OR ONLINE

www.whitireia.ac.nz



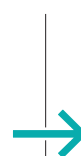
02

Assessment

We will assess your application. If you are required to attend an interview or audition, we will contact you to arrange a date and time. Once your application is approved we will send you a letter offering you a place on the programme you have selected. Please sign and return the Confirmation of Study that will be sent to you, to secure your place.

NOTE:

Some programmes require you to complete an Additional Information form. Please check with us for further details.



03

Fees

You will be advised of the fees payable for your study in your Letter of Offer. Fees will include the following:

- Fee payable for your programme of study
- Plus any additional fees such as special programme delivery fees, homestay booking fee, insurance, airport pick-up fee plus others as applicable

You will need to ensure that all fees are paid before your programme starts.

When we receive your fees we will send you an email with a copy of your fees receipt attached. If you have enrolled directly through an agent, then the email and fees receipt will go directly to them. The fees receipt and the letter you receive from us offering you a place on your programme of choice can be used to apply for a student visa.

Where to find us

New Zealand

PORIRUA

DX Box: SX33459
3 Wineera Drive
Porirua 5022

AUCKLAND

DX Box: CX10126
Level 2, 450 Queen Street
Auckland Central
Auckland 1010

04
CAMPUSES

07
LOCATIONS

AUCKLAND

KĀPITI
PORIRUA
WELLINGTON

India

NEW DELHI

18th Floor, Tower A
Building no 5
DLF Cybercity, DLF Phase III
Gurgaon, New Delhi
India Pin 122002

Phone +91 124 663 7694
Facsimile +91 124 663 7778

indiaoffice@whitireia.in

BANGALORE

The Executive Centre – Level 11
Canberra Block, UB City
#24 Vittal Maliya Road
Bangalore
India Pin 560001

Phone +91 806 720 5610
Facsimile +91 080 672 05556

indiaoffice@whitireia.in

China

BEIJING

B7C Beijing Oriental Ginza
No 48 Dongzhimenwai Street
Dongcheng, Beijing
China 100007

Phone +86 106 416 4510
Facsimile +86 106 416 4510

china@whitireia.ac.nz

VISIT

WWW.WHITIREIA.AC.NZ

FOR MORE INFORMATION

call: +64 4 237 3100
email: international@whitireia.ac.nz

or

call: +64 9 379 4666
email: auckland@whitireia.ac.nz



Disclaimer: The information contained in this study guide is correct as at 12 August 2016. Whitireia Community Polytechnic and/or Whitireia New Zealand Limited reserves the right to cancel or postpone any of the courses and/or programmes and shall not be liable for any claim other than the proportion of course/programme fees which the cancelled portion bears. Some courses and programmes may be dependent upon formal approval, Ministry of Education funding allocation and number of enrolments. Fees quoted in this study guide are for one year of study, additional fees are payable for programmes with a longer duration.





Whitireia
NEW ZEALAND

LEADING

& ILLUMINATING

OUR COMMUNITIES
THROUGH

**TERTIARY
EDUCATION**
