



**University of
Nottingham**

UK | CHINA | MALAYSIA

A Guide for International Students

China 2022



Get involved



www.nottingham.edu.cn/en/Global/



[Facebook.com/unncglobal](https://www.facebook.com/unncglobal)



[Twitter.com/unncglobal](https://twitter.com/unncglobal)



Wechat ID: UNNCGEO



[Instagram.com/unncglobal](https://www.instagram.com/unncglobal)



[Weibo.com/unncweibo](https://www.weibo.com/unncweibo)

nottingham.edu.cn



It starts here

Where it goes

is up to you

Why University of Nottingham Ningbo China?	04
Why China and Ningbo?	06
What our students say	08
Our courses	10
English language requirements	13
Entry requirements	14
How to apply	15
Tuition fees and scholarships	16
Exchange opportunities	17
Accommodation	20
How will I study?	24
Careers and employability	28
Student experience	30
International campuses	32
Contact us	34

Why Nottingham Ningbo?

Unlock your potential with a quality British education

**Opened in 2004 and located
in the city of Ningbo on the
east coast of China,**

the University of Nottingham Ningbo China,
the first Sino-Foreign university, is a leading
international University.

The University of Nottingham
is ranked

**103 in the world
(18 in the UK) out
of more than 1,000
universities**

in the QS World University
Rankings 2022



**Full range of sports
facilities on campus
open to all students
for free**

Choose from over

100

student-run
clubs and
societies



All students at the University of
Nottingham UK, China or Malaysia

will graduate with

the same degree certificate.

For more information about our university, please visit:
www.nottingham.edu.cn/en



The University secured
a double award as

University of the year

for both International and
Sports in the 2019 Guide.



*The Times and
The Sunday Times Good University Guide 2019*

All our degree
programmes
are taught in
English

45%

of our academic
papers were
published in world
top 10% journals



Our city was
ranked in

Forbes

list of the top
cities for business
in China

Staff and students
from over

70 countries
& regions



More than 96%
of our graduates are
employed or in further
study six months after
graduation (2019)



94.5%

student
satisfaction
score in 2018



Our academic staff
are either seconded
from Nottingham
UK or appointed
to the University
of Nottingham's
standards

Partnerships with
over 100 universities
to provide study
abroad and exchange
opportunities

Why China and Ningbo?

Such experiences, combined with a highly ranked UK degree, allow our students to obtain impressive and sought after CVs. Knowledge of China is increasingly desired by employers in today's globalised world. University of Nottingham Ningbo China offers students the opportunity to gain this first-hand experience from a world-class British university.



Why Ningbo?

Ningbo is located in Zhejiang province on the south shore of Hangzhou Bay, just under two hours away from Shanghai. It is recognised as one of the best cities for safety, affordability and job growth in China.

*The Business of Cities 2013 by Jones Lang LaSalle IP, Inc.

*Chinese Cities of Opportunities 2016 by PwC China

Facts

Nearly 7,000 years old, populated with over 7.6 million people and covering around 1,033sq km, Ningbo is a rapidly growing city. It was ranked in Forbes' list as one of the top cities for business in China and is a thriving blend of enterprise, culture, education, tradition and entertainment.



Easy gateway

The city's excellent transport links by bus, train and air means that Ningbo is easy to explore and an ideal base from which to visit China and the rest of Asia.



Culture

Ningbo offers the opportunity to feel at home among an array of international shopping outlets, restaurants, clubs and bars, while hosting international sports and music events. It also provides the chance to embrace culture and tradition – temples and intricate streets house markets selling a variety of antiques, textiles and delicious Ningbo cuisine. National and local festivities show the delights of Chinese culture while a number of museums and exhibitions represent the city's historic past and innovative future.

Gain first-hand experience in China

Studying in China offers you the chance to embrace a new culture, study a new language and learn about a country which possesses one of the largest economies in the world.

Food

As Ningbo houses an international community, it is well stocked with restaurants from all corners of the globe. Indian, Italian, Lebanese, Turkish, Japanese, Korean, Thai and Mexican are just a few of the cuisines available in Ningbo.

There is also a wide variety of food and drink options available on campus. Ranging from Chinese staples and specialities to Subway, Starbucks, Japanese and Korean food, there is something to suit every taste and wallet.

China's extensive online shopping market also allows easy access to imported goods, so to have a taste of home.



To see more about Ningbo, visit

www.nottingham.edu.cn/ningbo

Search:

YouTube Ningbo

What our students say

Hear what our international students say about study in China. Use link:

www.nottingham.edu.cn/en/global/student-sharing.aspx

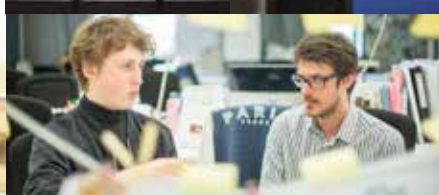
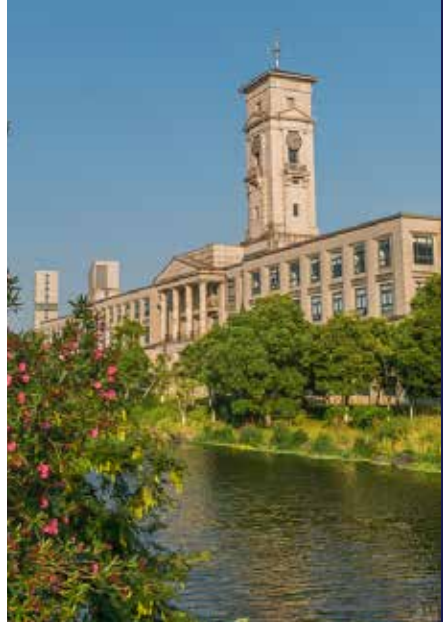
“

Coming to UNNC helped discover my true potential and allowed me to share and combine knowledge with fellow students from every corner of the world. In my master in International Business we are all students from different Bachelor's degrees, so an architect, a translator or a chemist can be discussing about the merger and acquisition of a company, each giving a unique point of view. Our professors, Chinese or international, work directly in the field of their lectures, improving the quality of our classes and make our learning a complete cycle. The perspective I have developed here is one of a kind, as I now have bird's eye on a truly international environment, and I can now say that I couldn't have chosen a better option.

”



Sara Ferreira, Spain
MSc International Business



“

There are opportunities for us to be exchanged to another Nottingham campus or other universities which allow us to explore the world and help us stand on our feet, meeting a lot of international students. There are also a lot of opportunities to find internships in or outside of the university which will allow us to use our knowledge to practical applications.

”

 Poornima Ramesh Iyer, Thailand
BEng Chemical Engineering



“

I've really enjoyed

the opportunity to learn about higher education from an international perspective at UNNC. As an MA student in the International Higher Education program, I have taken an internship on campus each semester to learn more about university management. My course has organized trips to nearby universities so that we can learn more about other unique global partnerships. I get insight into the British education system at UNNC and the Chinese systems at other universities in the area. My education here has opened my mind to new systems of university management while also focusing my interests. I've also really enjoyed all of the free field trips and activities that the university offers, it has helped me get to know Chinese history and culture better.

”

 Julia AUGHENBAUGH, America
MA International Higher Education



Our courses



Bachelors

Bachelor courses at UNNC are three or four-year programmes, with the four-year programme including a preliminary year, which gives students who would like to advance their academic and English proficiency to be qualified for traditional (Qualifying year) entry to study with us. Courses marked with a * offer the option to spend the last two years of your course at our UK Campus.

Aerospace

BEng Aerospace Engineering*

Architecture and Built Environment

BEng Architecture

BEng Architectural Environment Engineering*

Business

BSc Finance, Accounting and Management

BA International Business with Communication Studies

BSc International Business Economics

BA International Business with Chinese/French/German/Spanish/Japanese

BSc International Business Management

Chemical and Environmental Engineering

BEng Chemical Engineering*

BEng Environmental Engineering*

Chemistry

BSc Chemistry*

Civil Engineering

BEng Civil Engineering*

Computer Science

BSc Computer Science*

BSc Computer Science with Artificial Intelligence*

Economics

BSc International Economics and Trade

BSc Economics

Education and English

BA English Language and Applied Linguistics*

BA English with International Business

BA English Language and Literature*

Electrical and Electronic Engineering

BEng Electrical and Electronic Engineering*

Mathematical Sciences

BSc Mathematics with Applied Mathematics*

BSc Statistics*

Mechanical, Materials and Manufacturing Engineering

BEng Mechanical Engineering*

BEng Product Design and Manufacture*

Geographical Sciences

BSc Environmental Sciences*

International Communications

BA International Communications Studies

BA International Communications Studies with Chinese

International Studies

BA International Studies

BA International Studies with Chinese/French/German/Japanese/Spanish

For further information about our courses visit:

www.nottingham.edu.cn/en/study-with-us/undergraduate/courses/atoz.aspx



Masters

Our masters are normally offered as one-year programmes. Course marked with a * is offered as two year programme. For information on entry requirements, see page 12.

Business

MSc Entrepreneurship and Innovation Management

MSc Finance and Investment

MSc Finance and Investment(Professional Accounting)*

MSc International Business

MSc International Management

MSc International Management (Business Analytics)

MSc International Management(Marketing)

MSc International Business (Supply Chain Management)

Economics

MSc Finance and Investment (Economics, Money and Finance)

Education and English

MA Applied Linguistics

MA Interpreting and Translation, Mandarin and English

MA International Higher Education

MA Teaching English to Speakers of Other Languages (TESOL)

Engineering

MSc Urbanism and Sustainable Environments

International Communications

MA International Communications Studies

International Studies

MA International Relations and World History

MA International Relations and International Business

Master of Research (MRes)

MRes in Sustainable Energy and uilding Technologies

MRes in Chemical Engineering and Technology

MRes in Environmental Science and Engineering

MRes in Material Science and Engineering

MRes in Mechanical Engineering

PhD programmes

We offer full and part-time PhD programmes across our three faculties, including Faculty of Business, Faculty of Humanities and Social Sciences, and Faculty of Science and Engineering.

The PhD degree is generally a three to four-year full-time programme, tailor-made to meet your specific research interests. It normally takes four to six years to complete on a part-time basis.

Depending on your research, you may be required to spend part of your studies at the UK Campus, as a registered student at the University of Nottingham Ningbo China.

For further information about our courses visit:

www.nottingham.edu.cn/en/study-with-us/postgraduate-taught/postgraduate-taught.aspx

International qualifications

Preliminary year (year one entry)

GCSE/IGCSE/O levels

Normally a minimum of five B grades including Bs in relevant subjects.

Qualifying year (year two entry)

A levels

Typical A level requirements are ABB/BBB for the majority of programmes. Relevant subjects vary for each programme.

International Baccalaureate (IB) Diploma

Typical requirements are 30–34 points, with Higher Level subjects and grades required for particular programmes.

Advanced Placements (APs)

Typical requirements range from 4,4,4–5,5,4.

SATII (subject specific tests)

Typical requirements are 650,650,650–700,700,650.

SATr (SAT Reasoning Test)

Typical requirements are 1280–1300



Master's entry

The entry requirements for our Master's degree may vary depending on the courses, as a general rule, you are expected to hold an honours degree at 2.1 level or above (or international equivalent) in an appropriate subject.



English language requirements

In addition to academic qualifications, if your first language is not English or your entry qualification was not obtained in the English medium (from an approved institution), you are expected to provide evidence of your proficiency in English.

The minimum requirements for our courses are listed below:

Bachelors courses

Preliminary year

- IELTS 5.5 (no less than 5.0 in writing)
- PTE Academic 55 (minimum 51)
- TOEFL iBT 79 (minimum 17 in writing and Listening, 18 in Reading and 20 in speaking)

Qualifying year

- IELTS 6.5 (no less than 6.0 in writing)
- PTE Academic 62 (minimum 55)
- TOEFL iBT 87 (minimum 20 in Speaking and 19 in all other elements)

Masters courses

- IELTS 6.5 (no less than 6.0 in any elements)
- PTE Academic 62 (minimum 55)
- TOEFL iBT 87 (minimum 20 in Speaking and 19 in all other elements)

Research programmes

Please check www.nottingham.edu.cn/en/graduateschool

English requirements for specific courses

The minimum English language requirements for BA English Language and Applied Linguistics, BA English Language and Literature and BA English with International Business are:

- IELTS 7.0 (no less than 6.0 in writing)
- PTE Academic 67 (minimum 55)
- TOEFL iBT 100 (minimum 20 in Speaking and 19 in all other elements)

The minimum English language requirements for BEng Aerospace Engineering are:

- IELTS 6.0 with at least 5.5 in each element.

Alternative test scores may also be considered.

The minimum English language requirements for MSc Urbanism and Sustainable Environments is:

- IELTS 6.0 (no less than 5.5 in any element)
- PTE Academic 55 (minimum 51)

Alternative test scores may also be considered.



Minimum entry requirements

For a full range of country specific qualifications, please visit us at <https://www.nottingham.edu.cn/en/global/degree-programme/degree-programme.aspx>

For students who are graduating from a domestic universities in China, please refer to the entry requirement for mainland China students. www.nottingham.edu.cn/en/study-with-us/postgraduate-taught/postgraduate-taught.aspx

Meeting the minimum entry requirement doesn't guarantee your admission into our university.

Qualifying year

If you are applying to the qualifying year and you are taking A levels, the International Baccalaureate (IB) Diploma, Advanced Placements (APs) or SATII (subject specific tests) you should refer to our international qualification section on page 12.

English language requirements

In addition to the academic requirements, you will also need to meet our English language requirements – see page 13.

We would like to provide accurate information based on your individual qualification.

If you may scan below QR code/click the hyperlink and fill in the required information, we will be in touch with you and support you better.

<https://go.nottingham.edu.cn/l/935493/2021-08-10/zy5>



How to apply



To submit your application, please visit:

<https://www.nottingham.edu.cn/en/study-with-us/what-next/how-to-apply.aspx>

Online Application System :

<https://admissions.nottingham.edu.cn/account/login>



Check your application deadline

The closing date for applications is 31 May 2022.

Prepare your application :

- One recommendation letter on headed paper, signed and/or stamped
- Transcript of school exam results (completed or results so far)
- High School Certificate
- English language test score report if already received (e.g. IELTS or PTE)
- Personal Statement
- One photocopy of the main pages from your passport
- One 2*2 inch color bareheaded photo with white background (Note: the head occupies two thirds of the size of the photo; no less than 320 × 240 pixels, the aspect ratio is 4: 3; the size is 100-500kb; jpg format)



To make an enquiry, please click below link:

<https://go.nottingham.edu.cn/l/935493/2021-08-10/zy5>

Tuition fees and scholarships

How much
will my
fees be?



Tuition fee for both Bachelors and Masters courses

110,000 RMB per year (2021 Entry)

These include library membership, IT services and examinations. Please note that tuition fee for MSc International Business (Supply Chain Management) is 150,000 RMB per year.

Students who choose to spend two years studying at the University of Nottingham, UK will pay the overseas fee (or EU fee where appropriate) applicable at the UK Campus at the time of starting their course at the University of Nottingham Ningbo China.

Please note that the tuition fee will be subject to change and for updated information visit:

For undergraduate students: <https://www.nottingham.edu.cn/en/study-with-us/undergraduate/tuition-fees-and-finance.aspx>

For postgraduate students: <https://www.nottingham.edu.cn/en/study-with-us/postgraduate-taught/tuition-fees-and-finance.aspx>

Estimated annual cost

The estimated annual cost to cover everything would be around 160,000 RMB (approx. 24,600 USD*).

*Currency exchange rate is based on 1 USD=6.5RMB

For up-to-date conversion rates visit www.xe.com/ucc

Entry scholarships

Nottingham Global Full Scholarship	¥110,000
Nottingham Global Half Scholarship	¥55,000
Nottingham Global A Quarter Scholars	¥27,500
Ningbo Government Scholarship for Bachelor	¥20,000
Zhejiang Government Scholarship for Bachelor	¥20,000
Ningbo Government Scholarship for Master	¥30,000
Zhejiang Government Scholarship for Master	¥30,000
Central & Eastern European Countries Scholarship	¥20,000
Alumni Scholarship (for maximum 3 years)	¥16,500
Family Scholarship (for maximum 4 years)	¥11,000

Please note that the scholarships will be subject to change and for updated information visit:

<https://www.nottingham.edu.cn/en/global/scholarship/entry-scholarship.aspx>

Other costs

Text books for undergraduates: flat fee of 2,500 RMB per year (only for Year 1 students), If your books do not total 2,500 RMB at the end of each academic year, you will be refunded the difference.

Accommodation costs: approximately 5,000 – 16,000 RMB per year for overseas students, depending on the type of accommodation.

Living costs: 16,200 RMB-31,500 RMB per year for living expenses.

Compulsory insurance: 800 RMB per year for undergraduates and 1,000 RMB for postgraduates.

Campus card fees: RMB 200 for the first year if you choose to live on the campus. And the money will be used to precharge utilities.



See the world

Study abroad and exchange

Do you want to enhance your employability and global outlook whilst seeing the world? If yes, then studying abroad can transform your university experience.

We are proud of our international reach and want as many of our students as possible to experience living and studying in a different country.

We have various study abroad programmes with more than 100 partners in around 40 countries and regions, as well as our campuses in the UK and Malaysia.

Exchange opportunities

Exchange is a competitive programme that offers our undergraduate students the opportunity to study at one of our partner universities for one semester or one academic year, as part of your Nottingham degree programme. You continue to pay your tuition fees to UNNC and pay no tuition fees to the partner institution.

Study abroad

For an additional fee, we offer the opportunity to study at our UK Campus or at one of the approved study abroad partners elsewhere in the world. Like exchange opportunities, you take modules for credits that count towards your final degree.

Summer schools

Taking part in a summer school can provide you with a unique opportunity to study abroad during the summer break without having to take time out of your degree programme. Summer schools help you to achieve a global perspective that many employers are now looking for with experience of communications in an international arena demonstrating your cultural awareness, flexibility and the ability to easily adapt to a new environment.

UNNC Partner Universities

The list will be subject to change and for the most up-to-date information please visit: www.nottingham.edu.cn/en/global

Australia

University of Melbourne

University of Queensland

University of Technology Sydney

University of Sydney

University of New South Wales

Monash University

SP Jain School of Global Management

Belgium

Vesalius College

Canada

University of British Columbia

Concordia University

McGill University

Chile

Universidad del Desarrollo

China

Bohai University

University of International Business and Economics

Chong Qing University

Colombia

Universidad de la Sabana

Czech

Czech Technical University in Prague

Denmark

Copenhagen Business School

Technical University of Denmark

Aarhus University

University of Copenhagen

Egypt

The American University in Cairo

Finland

University of Eastern Finland

France

Neoma Business School

Institut D'etudes Politiques De Toulouse

Paris Business School (ESG school of management)

KEDGE Business School

Germany

Kuhne Logistics University

Hamburg School of Business Administration

TUM School of Management, Technical University of Munich

Jacobs University

University of Applied Sciences Bremen

Technische Hochschule Nurnberg Georg Simon Ohm

University of Hohenheim - Faculty of Business, Economics and Social Science

European Business School

Hong Kong, China

Ability R&D Energy Research Centre, City University of Hong Kong

Technological and Higher Education Institute of Hong Kong

Lingnan University

HKU School of Professional and Continuing Education

City University of Hong Kong

Hong Kong City University

Indonesia

BINUS University

Diponegoro University

University of Gadjah Mada

India

Chitkara University

Chandigarh University

Ireland

University College Dublin

Trinity College Dublin

Italy

Universita commerciale Luigi Bocconi

University of Parma

Department of Engineering, University of Modena and Reggio Emilia

LUISS Libera Universita Internazionale degli Studi Sociali Guido Carli

Japan

Kanazawa Seiryō University

Tokyo University

Waseda University

Korea

Chung-Ang University

Ewha Womans University

Hanyang University

Kyung Hee University

Korea University

Sungkyunkwan University

Kazakhstan

Nazarbayev University

Macau, China

University of Macau

Malaysia

Sunway University

University of Nottingham Malaysia

Tunku Abdul Rahman University College

University Sains Malaysia

Mexico

Tecnologico de Monterrey

New Zealand

University of Auckland

University of Canterbury

Norway

Norwegian University of Science and Technology

BI Norwegian Business School

Philippines

University of Philippines Diliman

Poland

Poznan University of Economics and Business

Cracow University of Economics

Warsaw School of Economics

Slovenia

University of Ljubljana

Spain

Universidad Carlos III de Madrid

Universidad de Deusto

Universidad de Cantabria

University of Navarra

ESIC Business and Marketing School

Universidad Catolica San Antonio de Murcia (UCAM)

Universidad de Castilla La Mancha (UCLM)

Universidad Rey Juan Carlos

Sweden

Lulea University of Technology

Switzerland

Zurich University of Applied Sciences

Taiwan, China

Tunghai University

Yuan Ze University

National Taiwan University

Ming Chuan University

National Taiwan University of Science and Technology

Tamkang University

Chihlee Science and Tech

Taipei Medical University

Wenzao Ursuline University of Languages

I-Shou University

National Tsing Hua University

Thailand

Chiang Mai University

Srinakharinwirot University

Thammasat University

Chulalongkorn University

The Netherlands

University of Amsterdam

The University of Groningen

Radboud University Nijmegen

Turkey

Sehir University

UK

Aberystwyth University

Loughborough University School of Business and Economics

University of Birmingham

University of Edinburgh

University of Essex

University of Nottingham

University of Glasgow

St Antony's College, University of Oxford

Brunell University, London

The University of Warwick

USA

College of Liberal Arts, Texas A&M University

College of Engineering, Texas A&M University

Tufts University

Lehigh University-Energy Research Center

University of California, Los Angeles

The University of Texas at Dallas

The College of Charleston

The University of South Florida

University of Connecticut

University of Tennessee

Bucknell University

University of Florida

Purdue University

Butler University

University of Idaho

Vietnam

University Social Science and Humanity

Discover your perfect home

Your accommodation halls are the perfect base to explore your new life in Ningbo.

International Residence Building 11			
Fee	Accommodation type	Distance	Internet
Single room: 16000RMB/ year+1000RMB deposit; Double room: 8000RMB/ year/person +1000RMB deposit/person	Self-catered single room with private toilet and shower room. Each room has a small balcony	Five minutes' walk to main teaching building	Available in room? Yes - China Telecom (additional cost)
Facilities			
Shared facilities: Launderette (washing and drying machines) Cooking facilities: Shared kitchen on the first floor with fridges, microwave oven, induction stove Bathroom facilities: Private shower room Toilet facilities: Private toilet Bedroom facilities: Desk, wardrobe, single bed and mattress, bedding, air conditioning unit			

International Residence Building 18 & 20			
Fee	Accommodation type	Distance	Internet
11,000 RMB per year + 1,000 RMB deposit	Self-catered four-bedroom flat with balcony	Five minutes' walk to main teaching building.	Available in room? Yes - China Telecom (additional cost)
Facilities			
Shared facilities: Launderette (washing and drying machines); Lounge/common room (shared with three other students); Wash room (shared with three other students) Cooking facilities: A few cooking appliances in the lounge/common room including fridge, induction stove, rice cooker, TV set Bathroom facilities: One shower room per flat (shared with three other students) Toilet facilities: Two toilets per flat (shared with three other students) Bedroom facilities: Desk, small wardrobe, desk lamp, single bed and mattress, bedding, and air conditioning unit			

***Room cleaning:** Twice a month free of charge

All international students are guaranteed a room in one of our accommodation halls once you have gained and accepted a place.

All our accommodation buildings offer fully furnished private single bedrooms, equipped with internet points.

The accommodation information was based on 2020 entry. For the most up-to-date information about accommodation please visit:
www.nottingham.edu.cn/en/accommodation



Residence Building 11



Residence Building 18



Residence Building 20



Your base @UNNC

Department of Campus Life

Department of Campus Life provides an extensive range of administrative and support services to all students. It encompasses quality services in the areas of wellbeing support, extracurricular engagement and initiatives for diversity and social inclusion.



Peace of mind

Living away from home for the first time can be daunting but our accommodation offers a secure and supportive environment. Our halls of residence have a warden, deputy warden and tutors for support – they will all get to know you and make sure you feel safe. There is also 24-hour security for added peace of mind.



A strong sense of community

Each University of Nottingham campus has a distinct style and personality. Common to all is a strong sense of community, created by approachable staff, a welcoming student body, excellent support services and a wide range of activities to help meet new people and feel at home.



Convenient and effective spaces

A vibrant UK-style high street is a popular gathering point on campus for staff and students. Facilities include a cinema, bookstore, post office, dry-cleaner, supermarket, hair salon, bank ATMs and several restaurants. Shopping malls, entertainment facilities and other amenities are all within walking distance or a short bus or taxi ride from the campus.



A compact, vibrant and cosmopolitan city, Ningbo is a mix of modern and historic, quirky and mainstream, with a thriving cultural scene.



Student support

Our student support teams offer ongoing support throughout your time at University. If you have accessibility requirements, get in touch to let us know what you need.



24-hour access to medical care

The campus has a clinic with dedicated doctors and nurses on 24-hour call. There is also a private hospital nearby which is equipped with an emergency department.



Engaging study, incredible results



The teaching approach at the University of Nottingham Ningbo China (UNNC) follows the same standard as the University of Nottingham in the UK.

Generally, you will be taught partly in large lecture groups and in smaller seminar groups of about 15-20 people. These small seminars allow you take part in discussions, interact with other students from all over the world and develop your communication skills.

Away from the classroom, you will be encouraged to read widely on your subject and to structure your own learning. You will also take part in group work and presentations and, on certain courses, field and laboratory work.

This mix of learning approaches will equip you with skills in group working and collaboration, self-direction, reasoning and critical reflection, as well as the ability to independently acquire knowledge and apply it to different situations.

Academic year

Our academic year begins in early September and ends in mid-June the following year.

It is divided into two semesters, each consisting of a block of 12 teaching weeks followed by an examination period. The winter vacation is from late January or early February for a four-week period. The long summer vacation is from mid-June to the end of August.



Modules

All our courses at bachelors and masters level are divided into modules, self-contained blocks of study each of which is based on a particular subject area.

Each semester consists of a combination of compulsory and optional modules according to your own interests and development needs. These modules are assessed through course works and/or exams based on individual academic requirements.



Learning support

We provide a wide range of support to help you to improve your academic study skills. Academic staff offer individual consultations for discussion about your work and progress.

This opportunity to discuss ideas and coursework directly with your tutors is integral to the culture of the University. You will also be assigned a personal tutor who can guide you through your studies. Your Faculty office can help with any administration questions.

Our library has a huge number of resources, including more than one million printed and digital books and journals. You might be spending a lot of time in the library, so it's good to know there are group work spaces, silent study zones, PCs, laptops, kindles and display screens – everything you'll need. "You can also meet library staff personally and virtually who are helping you make good use of our resources and offering professional solutions."



Innovative remote teaching and learning at UNNC

In a major effort to keep students on track and making progress toward their degrees during the COVID-19 epidemic, the University of Nottingham Ningbo China is adopting a digital teaching and learning program that is unprecedented both in size and scope for the university.



We understand that in these prolonged Covid-19 circumstances, you may well be concerned about the plans that UNNC has in place for the beginning of your higher education studies at our university. If you are unable to attend UNNC in person, you can rest assured that UNNC has put in place plans to ensure that university teaching and learning activities can reach all students, irrespective of their location.

In order to achieve this, teaching and learning teams are working on module plans that allow distance students to be involved in teaching and learning activities to the same extent as if they were on campus. A wide variety of innovations and technologies have been utilised at UNNC since the Covid-19 pandemic outbreak. These include the following types of activities (which may vary depending on the content of the module being taught):

Screencasts (providing recorded interactive lessons and tutorials)

- Moodle: Virtual Learning Environment (to host materials and to use Forums to engage with tutors and classmates)
- Panopto (interactive video activities)
- Xerte (University of Nottingham software to create interactive materials and resources)
- Online 'live' classes (carried out via Zoom and Teams)

We have also considered our teaching methodologies to ensure that distance students are not disadvantaged by not being in the classroom. These have included the following types of activities (which may vary depending on the content of the module being taught):

- Consideration of time zones to provide 'usual' teaching hours for students
- Use of 'team teaching' to provide access to a variety of teachers and teaching styles
- Interactive classrooms to allow for distance students to join live classes
- Blended learning on many courses, enabling all students to benefit from elements of online teaching and learning, irrespective of location
- Alternative assessments, allowing all students to be tested through the same methods, irrespective of location

Please be assured that UNNC will work hard to ensure that your learning experience is commensurate with that of on-location students despite your possible distance from campus. UNNC values the diversity and multicultural interactions that International students/students outside of mainland China bring to the student experience, and we look forward to welcoming you to campus as soon as possible.



Be the first choice for your future employer

You will leave us with a University of Nottingham degree recognised and valued by employers and universities all over the world.

Our graduates have landed with leading global companies such as AB InBev, Google, Hilton, IKEA, KPMG, Nestle, PwC and Standard Chartered Bank, as well as prominent Chinese employers such as Bank of China, Alibaba and Huawei.

Added benefits

Not only will you graduate with a degree from an internationally-recognised university but you will also have the chance to engage in activities that will enhance your CV, including:

- Accessing the services and programmes provided by our Admissions and Career Development Office, which offers vacancy updates and career advice to students.
- Completing internships outside of university– in the past, students have worked for leading and multinational companies including IBM, Microsoft, Ogilvy and Siemens.
- Taking part in the Nottingham Advantage Award, a free programme of activity focusing on skills, employability and personal development – you can study modules focused on career skills, mentoring, cultural awareness, entrepreneurship and volunteering.
- Participating in International Career Workshop, a career development workshop carried out by professional career institutions to improve your employability.
- Attending International Career Week, a series of activities such as recruitment fair, alumni sharing and industries exposure which open to international students every year.
- Building up your network and connections in China, a country whose economy is set to be among the world's largest (for more information on why you should study in China, see page 6).



Interesting Facts

- The University of Nottingham secured a double award as the University of the Year for both International and Sports in the 2019 Guide**
- 96.5% of our graduates are employed or in further study six months after graduation***
- 80.6% of students who chose to go on to further study went to a world top 100 university* and about 26.1% to a world top 10 university*, such as Oxford and Cambridge in the UK and Stanford in the USA, with many receiving full scholarships for PhD studies
- 88.8% of students in employment after graduation went to work for Fortune Global 500 companies, government or public institutions or well-known Chinese companies

**As defined by the QS World University Rankings.*

***The Times and The Sunday Times Good University Guide 2019.*

****Known destinations of full-time undergraduate leavers who were available for employment, 2019.*



WeChat career assistant: unncareers

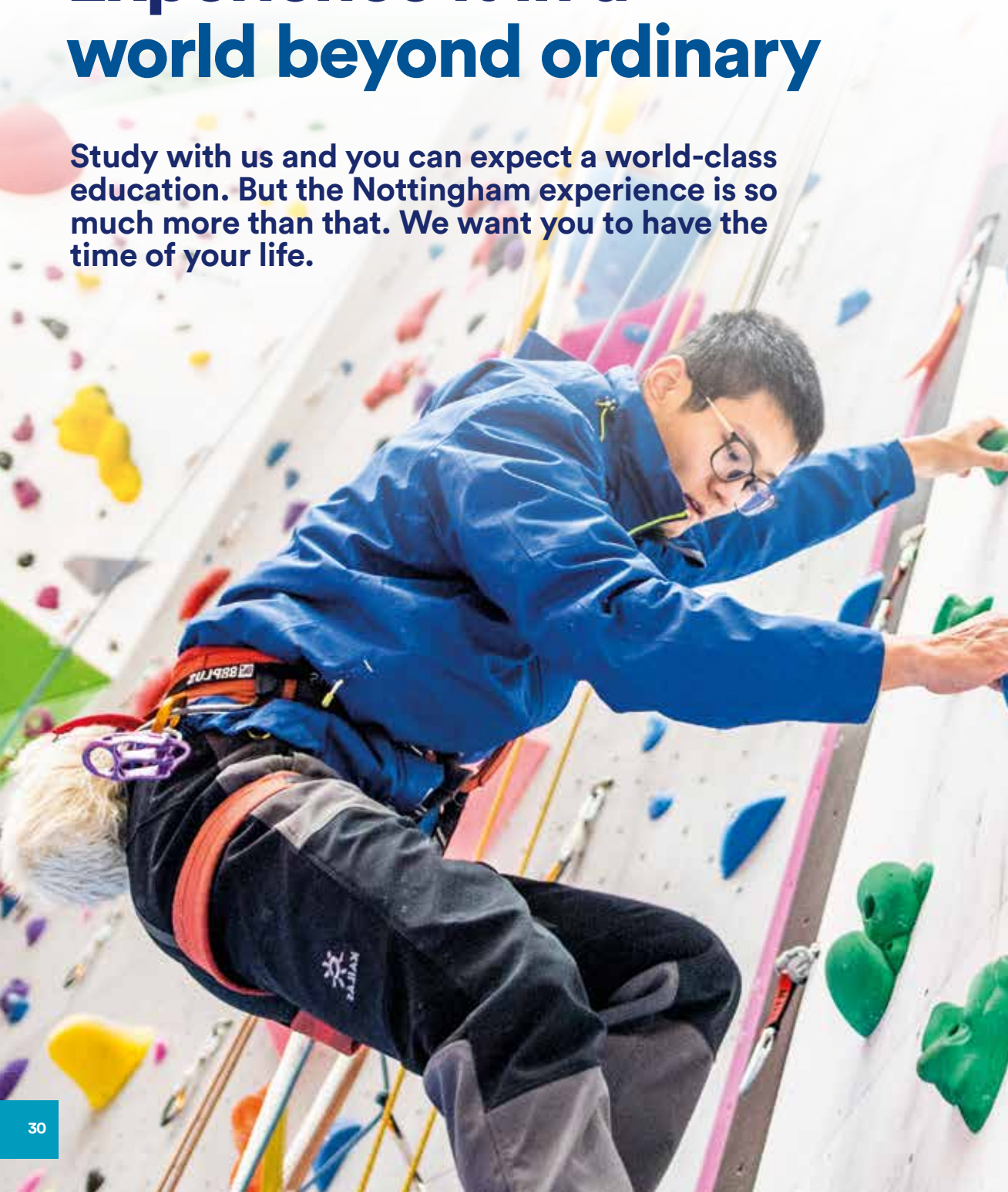


LinkedIn: Careers UNNC

Follow us to receive latest career information.

Experience it in a world beyond ordinary

Study with us and you can expect a world-class education. But the Nottingham experience is so much more than that. We want you to have the time of your life.



Sport

The Sport Department prides itself on it's variety of different programs, activities, facilities and opportunities for students to enjoy while at UNNC.

With our vision of "Making sport work for everyone, ensuring an enjoyable experience for lifelong participation" there will be something for everyone to enjoy through being physically active.

We have 22 sports clubs to become a member of, 11 different representatives teams to trial and be selected for and boast a weekly programme of 30+ different classes and activities to join each week.

We also have one of the best adventure sports programmes in China providing trips ranging from caving, surfing through to kayaking and climbing.

Students can also get involved in volunteering and interning with the department to enhance their student experience and employment once graduating.

Volunteering

With over 100 volunteering projects, there's plenty of opportunities to make a difference, boost your CV and meet new people. You give a little and get a lot back.



Student clubs and societies

There are dozens of clubs and societies to join, with events year-round for the serious-minded and fun-loving alike. You can choose to get involved in a range of activities, from taking part in martial arts to joining the student television channel's production team. Drama, dance and musical talents are also catered with student festivals and talent shows providing additional entertainment on campus.



Your support network

Throughout your university journey there will be numerous people on hand to support and advise you, including tutors and dedicated staff. We have The Hub, Residential College and Student Engagement Office which provide a range of support, information and specialist services. Find out more: www.nottingham.edu.cn/en

Be part of a globally connected university

The University of Nottingham is in the top 1% of universities worldwide. It is one of the most beautiful campuses in the UK and winner of 14 Green Flag Awards.

UK campus



Portland Building



Malaysia Campus

At our Malaysia Campus you will find a diverse and vibrant community living close to hills and waterfalls.

It's home to a sports centre, swimming pool, shops and food outlets, as well as impressive teaching and study facilities.

“I took part in an inter-campus exchange as part of my course and studying in Ningbo provided interesting modules with unique twists. I also travelled to Hong Kong, Thailand, Macau and around mainland China.”

Chris Routledge,
BA History with Chinese Studies,
University of Nottingham
Ningbo China

Faculty of Engineering



Perhentian Hall



Student Association



Contacting us

Global Engagement Office

Trent building
Nottingham Ningbo China
199 Taikang East Road
315100 Ningbo China



www.nottingham.edu.cn/en/Global/



Global@nottingham.edu.cn



+86 (0)574 88180000 ext. 8505

You can also follow us through our social media channels:



[Facebook.com/unncglobal](https://www.facebook.com/unncglobal)



[Instagram.com/unncglobal](https://www.instagram.com/unncglobal)



[Twitter.com/unncglobal](https://twitter.com/unncglobal)



Wechat ID: UNNCGEO

We would like to provide accurate information based on your individual requirements.

If you may scan below QR code/click the hyperlink and fill in the required information, we will be in touch with you and support you better.

<https://go.nottingham.edu.cn/l/935493/2021-08-10/zy5>



Map and location



©University of Nottingham 2021.

All rights reserved. Printed November 2021.

The University of Nottingham Ningbo China has made every effort to ensure that the information in this brochure was accurate when published. Please note, however, that the nature of the content means that it is subject to change from time to time, and you should therefore consider the information to be guiding rather than definitive. The information in this brochure is subject to change without notice from time to time.



Enquiries contact:

t: +86 (0)574 88180000 ext. 8505

e: Global@nottingham.edu.cn

nottingham.edu.cn

